



UNIVERSITY OF
AUCKLAND
Waipapa Taumata Rau
NEW ZEALAND

Postgraduate Prospectus 2024

Honours | Postgraduate certificates and diplomas | Masters | Doctorates



No.1

Ranked New Zealand
University¹



No.12

Globally for Sustainable
Development Impact²



No.1

In New Zealand
for Employability³

Nau mai, haere mai

Welcome to the University of Auckland

Postgraduate study at Waipapa Taumata Rau | University of Auckland offers the opportunity to fulfil your academic and career potential. Whether you choose one of our taught or research programmes, you can expect to challenge your own thinking, learn new skills and position yourself for the next exciting step in your career.

Our postgraduate students play an important role in the University's innovation ecosystem and are a valued part of our academic community.

As you pursue advanced study, you could contribute to the discovery and development of innovations that improve our social, cultural, economic and environmental wellbeing.

We also offer specialised and innovative degrees that meet the demands of an ever-changing world.

We've been recognised as world leaders in sustainability with our no. 12 ranking in the Times Higher Education Impact Ratings 2023.

These measure how well educational institutions are delivering on the United Nations' Sustainable Development Goals.

We offer a wide range of opportunities and support for students, including:

- Over 150 taught and research postgraduate programmes
- More than \$40 million in postgraduate scholarships and awards each year
- Extensive pastoral and learning support

The University of Auckland is also number one in New Zealand for Graduate Employability.³

When you finish your studies, you'll be equipped for the next step – what that looks like is up to you. Success with us is just the beginning.



DAWN FRESHWATER

Ihorangi | Vice-Chancellor

Waipapa Taumata Rau | University of Auckland

¹ QS World University Rankings 2023

² Times Higher Education University Impact Rankings 2023

³ QS Graduate Employability Rankings 2022

Contents

01 Welcome to the University of Auckland

Welcome to the University of Auckland	2
Prepare for your future of work	5
Take your research to the next level	6
New Zealand's most innovative university	8
Gaining an international qualification	9

02 Postgraduate programmes

Postgraduate programmes	12
Arts	14
Business School	18
Creative Arts and Industries	22
Education and Social Work	26
Engineering	30
Global Studies	34
Law	36
Medical and Health Sciences	40
Science	44
Auckland Bioengineering Institute	48
Liggins Institute	49

03 Supporting your study

International students	52
Funding your studies	55
Student services and support	57
Finding accommodation	61
Arriving from overseas	63

04 Applying

How to apply	66
--------------	----





Your passion could become your life's work

If you're looking to upskill or take your career to the next level, a postgraduate qualification will set you apart and support your future career goals.

It's in you. Bring it out.

Postgraduate study at the University of Auckland opens doors. So seize this opportunity for a new beginning. We offer a diverse range of taught and research programmes to choose from, whether you're looking to pursue your passion, advance your career or make the switch to a new one.

Postgraduate study isn't just about gaining a qualification. Learning is a lifelong journey that broadens your horizons and helps you grow into the person you want to be. Whatever your field, ongoing education will keep you relevant and professionally fulfilled in a constantly shifting and unpredictable world.

Accelerate your career

If you want to take your career to the next level, we can help you get there.

A qualification from the University of Auckland builds on your experience and helps you to achieve your long-term career goals. So position yourself for the next step in your career by developing your skills and learning from some of the best teachers in the country.

Advanced study also offers networking and leadership opportunities, along with the chance to surround yourself with like-minded people who share the same desire to learn.

Returning to study

Further study gives you the opportunity to achieve your academic goals and prepare for your next career move. Whether you choose one of our taught or research programmes, you can expect to build your confidence and challenge your thinking.

Learn new skills

To augment the skills and knowledge you receive as a postgraduate student, the University offers a variety of courses to develop academic and professional skills and to focus your career planning.

Career Development and Employability Services (CDES)

The CDES team helps postgraduate students to identify where they want to take their qualification. We will help you to develop an employability action plan to build experience (and confidence) alongside your studies.

Our in-person and virtual support is available from day one, right up to three years after you graduate! We bring employers onto campus to connect with students in person. We also offer a range of interactive workshops, from finding your career direction to job search, networking, interview skills and LinkedIn.

You can access all our services online via MyCDES and MyCDES+. There you'll find online modules, the NZUni Talent job board, self-service CV and cover letter checks. You can also register for appointments and events.

cdes.auckland.ac.nz

Doctoral Development Framework

Career advancement comes from careful planning. The Doctoral Development Framework helps candidates plan their development holistically for success within their doctoral programme and beyond.

auckland.ac.nz/ddf

Academic Career Advancement Programme

The Academic Career Advancement Programme (ACAP) prepares mid-phase doctoral candidates for a career in academia. This competitive programme is funded by the Academic Career Advancement Award and hosted by the School of Graduate Studies.

auckland.ac.nz/acap

Doctoral Entrepreneurial Leadership Programme

The Doctoral Entrepreneurial Leadership programme is a free year-long programme, designed to develop doctoral candidates' entrepreneurial mindset and skills. Run by the Centre for Innovation and Entrepreneurship, the programme is relevant to candidates from all disciplines.

cie.auckland.ac.nz

Take your research to the next level

Postgraduate research is a cornerstone of the University of Auckland. We offer a wealth of opportunities for you to undertake research as a postgraduate student: from small projects to in-depth doctoral theses.

\$40 million
worth of postgraduate
scholarships and
awards are on offer
each year.

Leading researchers

The University has more esteemed researchers than any other tertiary institution in New Zealand. You could be working alongside internationally respected researchers on a project of global significance, whilst building your international networks and a reputation of excellence.

Be part of our research community

As a postgraduate researcher at the University of Auckland, you will be part of a community of like-minded scholars – a community with more research degree completions than any other New Zealand university.

Renowned research-led University

We are New Zealand's top research-led university, due to the quality and number of our researchers, the breadth of our disciplines and the significant impact of our research. Our eight faculties cover a comprehensive range of disciplines. We also operate two internationally-renowned Large Scale Research Institutes, host four Centres of Research Excellence (CoREs), partner on another four, host two National Science Challenges and partner on another eight. Added to this are seven University centres and institutes that integrate the perspectives and practices of diverse disciplines as they focus on pioneering research.

Find a supervisor

Discover the expansive research going on throughout our faculties and find a supervisor to match your area of research focus. Our online database, Discovery Profiles, provides information about our research experts and their current supervision opportunities.

auckland.ac.nz/findasupervisor



New Zealand's most innovative university

Our strong innovation culture is reflected on many levels. Here every student has the opportunity to develop their entrepreneurial potential.

The University of Auckland is ranked in the top 10% of universities in the world for innovation.* We are committed to developing entrepreneurial-minded students and graduates in an innovative environment.

- Many of our academics and postgraduate students are involved in research that has the potential to benefit our society and economy.
- We offer extensive support to students and staff to develop their research for commercialisation or application in the creation of social ventures.
- We provide opportunities and activities to develop your innovation and entrepreneurship skills.
- We have opportunities to network with like-minded students and academics in an environment where collaborations have led to start-ups and spin-out companies.
- We offer postgraduate programmes in innovation and entrepreneurship designed to broaden career possibilities.

Velocity

Velocity is the University of Auckland's globally renowned entrepreneurship programme. It is student-led, supported by the Centre for Innovation and Entrepreneurship, and runs year-round seminars, workshops and challenges.

Velocity's 100k challenge encourages those with a business or social enterprise to test its potential. Shortlisted entrants win a place in the Velocity Launch Pad Programme, where they receive mentoring and workshops. Finalists compete in the \$100k Velocity Grand Final for seed-capital and support in growing their venture. Velocity and other CIE alumni have started 276 ventures, raised over \$1.36 billion in investment and created over 3,250 jobs.

velocity.auckland.ac.nz

Innovation Hubs

The Business School's Centre for Innovation and Entrepreneurship (CIE) supports all students and staff, no matter what you are studying. We are in the following two locations.

Unleash Space

Unleash Space is the University's state-of-the-art innovation hub with a dedicated maker space. It offers workshops, equipment and seminars to inspire, motivate and help you develop your entrepreneurial capability.

Create what you can imagine, design for today and prototype for tomorrow. The space houses 3D printers, laser cutters, routers, electronics, vacuum formers, vinyl cutters, sewing machines, craft and art supplies, and other tools and machinery.

Te Ahi Hangarau technology hub

The University's brand new Te Ahi Hangarau technology hub is located on Level 1 of the Owen G Glenn Building, with extra-curricular learning opportunities available to all students and staff. You can experiment with 5G, VR, IoT and more.

cie.auckland.ac.nz

Investing in your research

The University offers a range of opportunities for postgraduate students to explore the potential to commercialise their research. UniServices is a not-for-profit company of Waipapa Taumata Rau, University of Auckland. We transform research into global impact starting in Aotearoa New Zealand. We offer investment workshops that:

- Introduce you to the concepts of entrepreneurship, intellectual property and commercialisation
- Equip you with the tools and skills needed to attract investment
- Help you develop networks and prepare for a career in R&D

IP Protection, investment and development

UniServices champions research and ideas with the power to change the world. From seeking out and bringing together partners in academic institutions, industry and government to build new research-based knowledge and solutions through to whakatapu (nurturing). We invest in and commercialise the ideas and intellectual

property that arise from the University of Auckland's great minds. We act as the kaihono (those who join and link people to people and people to projects), firmly entrenched in the ecosystem that bridges the world of academia with business, government and our communities. UniServices has also collaborated with mātauranga Māori rangatira (experts) to create policies for the protection of Māori intellectual property.

uniservices.co.nz

Funding and investment

- The University of Auckland Inventors' Fund, managed by UniServices, is a \$40 million pre-seed and seed investment fund that is accessible to University researchers and students. The fund supports the commercialisation and investment into ideas and inventions, enabling you to transform your research into new businesses and products.
- Return On Science provides facilitated access to best-in-class investment resources, networks and expertise to increase the quantity and quality of the commercial opportunities arising from New Zealand research efforts.
- Its student-led sister programme, Momentum, operate several national investment committees. There, founders and inventors can get expert advice (and sometimes funding) for their ventures.

returnonscience.co.nz

Innovation programmes

The Business School offers a Master of Business Development and a Postgraduate Certificate in Business Development, both focused on innovation and product management. This unique programme is designed for innovators, researchers and working professionals.

auckland.ac.nz/online-mbusdev

* Times Higher Education University Impact Rankings on SDG9 Industry, Innovation and Infrastructure.

Gaining an international qualification

Our partnerships with leading overseas universities open up all sorts of opportunities. You could enjoy the benefits of joint research projects with our partner universities, international networking, exchanges, conferences and workshops.

Take advantage of our international partnerships and programmes

Times Higher Education ranked us 17th on its list of Most International Universities in 2022. This reflects our international outlook in developing key relationships that enhance our ability to perform as a globally competitive University. We are formally engaged in over 40 countries with organisations in government, industry, philanthropy, alumni and higher education.

auckland.ac.nz/globalpartners

360 International

360 International creates opportunities for you to study overseas as part of your University of Auckland degree. You may be able to study on exchange for one semester of a 180 or 240-point taught programme. Host universities are located in more than 30 countries. You must discuss feasibility and timing with your faculty in advance because you need to apply for exchange concurrently when applying for your postgraduate programme of study.

360 International also offers a range of virtual and short-term overseas opportunities to University of Auckland students to expand your international horizons. These opportunities are a great way for you to gain new global connections and quickly advance your academic, professional, and personal development. We offer a variety of opportunities focusing on leadership, skills development and culture, as well as internships and short courses.

auckland.ac.nz/360

Association of Pacific Rim Universities (APRU)

As a network of leading universities linking the Americas, Asia and Australasia, the Association of Pacific Rim Universities (APRU) is the Voice of Knowledge and Innovation for the Asia-Pacific region. APRU brings together thought leaders, researchers, and policy-makers to exchange ideas and collaborate on effective solutions to the challenges of the 21st century.

APRU leverages the collective educational and research capabilities of its members through involvement with international public policy processes. Primary research areas include natural hazards and disaster risk reduction, women in leadership, population aging, global health, sustainable cities, artificial intelligence and the future of work, the Pacific Ocean, and labour mobility.

A number of opportunities exist for students, including participation in APRU research conferences and research symposia.

Universitas 21 (U21)

Universitas 21 (U21) empowers students and staff from 28 world-class universities to share excellence, collaborate across borders and nurture the exchange of knowledge. U21 values cultural difference, connecting perspectives from around the world and harnessing collective expertise to benefit all of its members.

The U21 Graduate Collaborative Research Awards provide students with the opportunity to develop international research projects with partners across the U21 network.

Professional development opportunities are provided through the U21 PWC Innovation Challenge. This requires students to consider and respond to real workplace challenges, developing critical thinking, presentation and communication skills.

Worldwide Universities Network (WUN)

WUN brings together 25 universities across six continents and diverse cultural contexts. In partnership they provide an unparalleled richness of talent and resource that can be brought to bear on major research problems.

WUN provides opportunities for early-career researchers, including postgraduate and postdoctoral students, to gain experience in international research collaboration.

auckland.ac.nz/internationalnetworks

China Scholarship Council (CSC)

China to New Zealand

Top Chinese PhD students can study at the University of Auckland through a scholarship programme developed in collaboration with the China Scholarship Council (CSC). The Chinese Government provides a living allowance for the term of the scholarship and return airfares to New Zealand. They also fund student visa fees and health cover.

auckland.ac.nz/china-csc

New Zealand to China

The Confucius Institute in Auckland administers the NZ-China Scholarship to put forward recommendations to the Chinese Ministry of Education's China Scholarship Council, for up to 10 scholarships for students to study in a Chinese university for an academic year. These scholarships provide a monthly allowance and also cover tuition fees, teaching materials, accommodation and on-campus medical care.

ci.ac.nz/scholarships/nz-china



Get a taste of postgraduate study

Meet our academics and see what postgraduate life could be like for you.

Three Minute Thesis

Watch our research students explain their theses in just three minutes! This fast-paced global competition is an unmissable highlight in the postgraduate calendar, offering participants a unique platform to drive research impact and refine their research communications skills.

auckland.ac.nz/3mt

Research Showcase

Discover the breadth of postgraduate research at the School of Graduate Studies Research Showcase. This annual event is a key opportunity for postgraduates to gain public recognition for their research and to network with peers, academics and industry representatives.

auckland.ac.nz/sgs-showcase

Study 100% online

Explore our online programmes and take the next step in driving your career forward.

Now you can take the next step in your career without ever setting foot on campus.

Auckland Online brings career advancement and professional development within reach of busy people everywhere. The fully online programmes combine the freedom of digital delivery with the exceptional standards of a qualification from the University of Auckland.

With 100% online course delivery and no on-campus requirements or on-campus block courses, you can study in a way that fully fits your life and location.

online.auckland.ac.nz





“One of my favourite parts of the programme was getting back into the classroom after years away from study.”

“I am the Director of Mission and Special Character at Listen College. I work with the older students in a leadership role, going out into the community serving those who are less fortunate.

“My colleagues inspired me to enrol in the Master of Education. I knew this would better me as a person and as a professional.

“It was great working with other teacher professionals of similar age and experience who also held leadership positions in their schools. It was really interesting to have discussions about our different approaches and systems to deal with education change.

“I had really great lecturers and professors supporting me throughout my studies. They were like aunties to me – the door was always open. They allocated time, energy, a listening ear and a compassionate push in the right direction. This made my learning journey really comfortable. Whenever I had a mountain in front of me, it didn’t seem so high that I couldn’t get over it.

“I would recommend to anyone considering postgraduate study to go for it and take that next step. You will be surrounded by like-minded people who want to better themselves personally and professionally.”

Willie Swann

Graduate: Master of Education

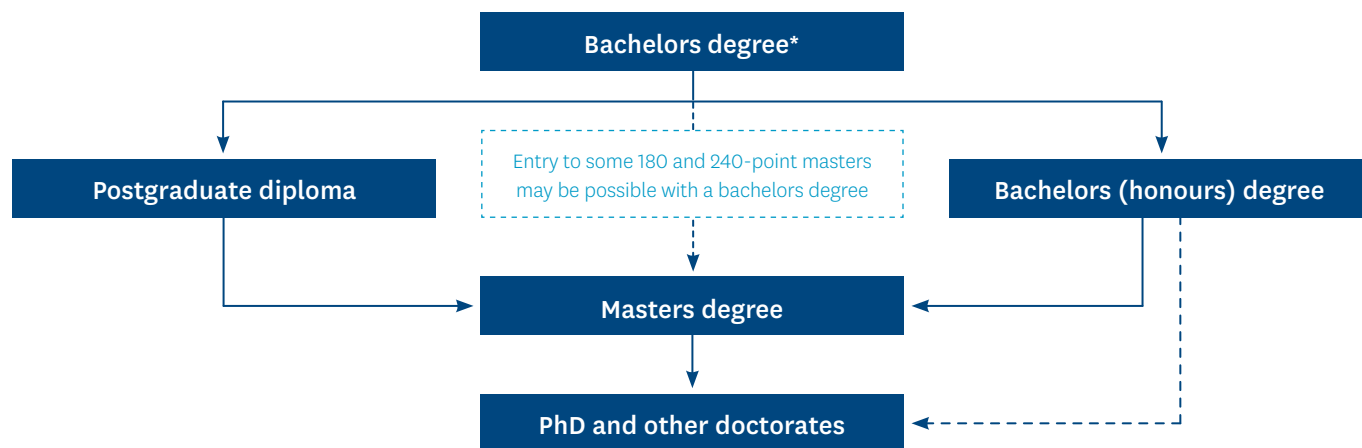


Hear more from our postgraduate students about their experience at [UoA auckland.ac.nz/pg-stories](https://www.uoa.ac.nz/pg-stories)

Postgraduate programmes

Postgraduate study enables you to deepen your understanding, develop specialist skills and knowledge, follow your passion for research, stand out in a competitive job market or change careers. We offer a wide range of postgraduate programmes to help you reach your goals.

Pathways to our postgraduate programmes



Over 150

postgraduate programmes are on offer across 200+ subjects, including 100+ subjects available for the PhD. Options range from traditional disciplines to emerging cross-disciplinary subjects.

Bachelors (honours)

Extend the knowledge you gained in your undergraduate degree with a bachelors (honours) degree. Our honours programmes are a great way to explore an area of interest from your undergraduate study in greater depth, develop research skills and give yourself an edge in the job market. Honours degrees are also a pathway to further study.

Bachelors (honours) programmes usually combine taught courses with a research project. Some honours can be completed as a research-only programme.

Further study

A bachelors (honours) degree can lead onto a masters or, if you perform well in your dissertation, some subject areas may allow direct entry to a doctoral programme.

Programme entry

You must have completed an undergraduate degree at a recognised university (or similar institution) in a field relevant to your specialisation, typically with a GPA or GPE of 5.0. Some programmes may require higher grades.

Postgraduate certificate

Postgraduate certificates are a great introduction to postgraduate study and can lead to a postgraduate diploma or masters degree.

These programmes are open to holders of bachelors degrees, or an equivalent qualification acceptable to the University, or those who can demonstrate extensive practical, professional or scholarly experience of an appropriate kind.

They offer flexible learning and the opportunity to gain specialist skills. A postgraduate certificate is a 60-point programme that usually requires one semester of full-time study (or equivalent).

Postgraduate diploma

Postgraduate diplomas offer the opportunity to build on your major undergraduate subject and can be an alternative to a bachelors (honours) degree. Some postgraduate diplomas provide specialised training and the opportunity for advancement in your profession.

Postgraduate diplomas are normally completed by taught courses, but may include practical training or a research project.

Programme entry

You must have completed an undergraduate degree at a recognised university (or similar institution) in a field relevant to your specialisation, typically with a GPA or GPE of 3.0 or 4.0. Some programmes may require higher grades.

**Some programmes are accessible via a 'non-bachelors pathway', where work-experience is considered instead of a formal qualification. For example, see pg 30, Engineering.*

Masters degrees

We offer an extensive range of masters degrees that allow you to increase knowledge in your subject, gain a professionally-accredited qualification, follow your passion for research or change career by gaining an advanced qualification.

Taught masters provide advanced specialist training in your field and are usually completed by taught courses only, although some can include a dissertation or research project.

Research masters are completed by thesis or a combination of taught courses and a thesis. They offer the opportunity to follow your research passion whilst developing advanced research skills.

Conversion masters enable you to study a masters in a different subject to your bachelors degree. To find out if a conversion masters is available in your area of interest, contact the postgraduate adviser for that discipline.

auckland.ac.nz/pgadviser

120, 180 and 240-point masters programmes

Some of our masters are available as 120-point (1 year full-time), 180-point (18 months full-time) or 240-point (2 years full-time) programmes, offering options for direct entry with a bachelors degree (to some 180 and 240-point programmes) or a bachelors (honours) or postgraduate diploma (to 120-point programmes).

Programme entry

120-point masters

You must have completed one year of postgraduate study, following an undergraduate degree, at a recognised university (or similar institution) in a field relevant to your chosen specialisation. Four-year bachelors degrees will be considered where the final year consists of postgraduate-level study.

You will typically require a GPA or GPE of 5.0. Some programmes may require higher grades.

180 and 240-point masters

You must have completed an undergraduate degree at a recognised university (or similar institution) in a field relevant to your specialisation (with the exception of conversion masters), typically with a GPA or GPE of 5.0. Some programmes may require higher grades.

Conversion masters

You will need an undergraduate degree with good passing grades. Requirements vary, so please check the relevant programme details online.

auckland.ac.nz/programmefinder

Doctoral degrees

A doctorate is the highest level of degree you can achieve. It gives you the freedom to follow your passion and undertake advanced research in your area of interest. You can develop essential transferrable skills as well as specialised research skills, both of which are relevant to a range of careers.

The Doctor of Philosophy (PhD) is available in 100 different subjects and is offered in all faculties and large-scale research institutes.

The University also offers seven named doctorates: Doctor of Clinical Psychology, Doctor of Education, Doctor of Fine Arts, Doctor of Health Sciences, Doctor of Medicine, Doctor of Music, Doctor of Musical Arts.

For the PhD, you will prepare a substantial thesis of original research that contributes significantly to knowledge and understanding in your discipline. Your thesis may include publications you have written under supervision for this degree or, for those in a creative arts or design discipline, you may present a body of creative work for assessment with your thesis. Our doctoral candidates work closely with at least two supervisors and many work in a team of researchers.

We offer a wealth of English-language enrichment opportunities to support your studies. All new doctoral candidates take a Diagnostic English Language Needs Assessment (DELNA) as part of their provisional goals. This helps us allocate you any English-language support you might need to ensure your academic success. (See page 60 for more information on English-language support.)

Programme entry

Acceptance to our doctoral programmes is based on academic merit.

You must be able to demonstrate an ability to carry out independent research and have already completed a significant research project, dissertation or thesis, at university.

You need to have completed a postgraduate qualification (or undergraduate honours or equivalent), including a research component equivalent to no less than 30 points, with at least a B+ result (both overall and in the research component) at the University of Auckland, or equivalent, in a field related to your doctoral studies.

Your acceptance into a doctoral programme is dependent on the availability of appropriate supervision and study facilities.

Calculating your GPA/GPE

Grades or marks achieved at the University of Auckland are given a grade point average (GPA).

Grades or marks achieved at other institutions are given a grade point equivalent (GPE). Use our GPE calculator for an indication of your GPE: gpecalculator.auckland.ac.nz

English-language requirements

The minimum requirement is an overall IELTS academic score of 6.5 with no band less than 6.0, or an approved equivalent. Check online for programmes that require higher levels of English proficiency.

auckland.ac.nz/pg-english-reqs

Academic integrity requirement

The University of Auckland requires all students admitted into a programme to complete the Academic Integrity Course in their first semester.

auckland.ac.nz/academicintegritycourse



*QS Graduate Employability Rankings 2022

Arts

Whether you're exploring an academic interest, taking a new direction or focusing on a career goal, postgraduate study will help you to enrich your skills and your future. Be part of an inspiring community of diverse students and internationally respected academic staff, and take your learning further.

Go deeper

Postgraduate study is a unique opportunity to delve more deeply into the academic interests you enjoyed during your undergraduate degree. It can offer a rich and meaningful source of personal fulfilment with life-long benefits. Advanced thinking, writing and researching open the door to new ways of understanding the world and yourself.

Choose a programme that suits you

You can choose from a wide range of postgraduate taught and research degrees and diplomas. Most of our programmes can be taken part-time, and most can be started in either Semester One or Semester Two. A postgraduate taught programme enables you to acquire further specialist knowledge and theory, and explore new and emerging fields of study. A postgraduate research programme is an opportunity to define and manage a research project in order to demonstrate your mastery of a topic.

Change direction

Your undergraduate major/s may provide a foundation for you to study a different but related area at postgraduate level. For example, a BA in Māori Studies and Sociology would give you a good foundation for a BA(Hons) in Development Studies.

Pursue a professional goal

In addition to the Bachelor of Arts (Honours) and Master of Arts, we also offer profession-specific programmes in the following areas:

- Conflict and Terrorism
- Creative Writing
- Heritage Conservation
- Indigenous Studies
- Language Teaching
- Public Policy
- Communication

Research strengths

Staff in the Faculty of Arts contribute to more informed, imaginative, compassionate and equitable worlds through research and creative practice. In the humanities, languages and cultures, social sciences, and Indigenous studies, we speak truth to power, give voice to the silenced, make art, disrupt myths, guide policy, challenge hypocrisy and stoke curiosity.

Leading researchers

Collaborate with academic staff who are international leaders in their fields and passionate about making a difference. Our community of researchers' interests range from cybercrime and political marketing to legal ethics and race relations history. The 2023 QS World University Rankings placed us in the world's top 50 for English Language and Literature, Linguistics, Anthropology and Archaeology.

We are also home to a range of specialist and cross-disciplinary research centres.

Explore our wide range of research areas and search for a potential supervisor online.

auckland.ac.nz/arts-PG

Research institutes, centres and groups

Our diverse research communities include:

- Academy of New Zealand Literature
- Auckland History Initiative
- Centre of Methods and Policy Application in the Social Sciences (COMPASS)
- Europe Institute
- James Henare Māori Research Centre
- Koi Tū: The Centre for Informed Futures
- New Zealand Centre for Latin American Studies
- Ngā Pae o te Māramatanga
- Public Policy Institute

Career opportunities

Postgraduate study in Arts encourages you to be a self-directed learner who pushes intellectual boundaries. You'll be researching and analysing complex information, formulating rigorous arguments, finding and communicating new solutions, cultivating creative thought leadership and developing high-value insight.

These skills can help distinguish you from others in a crowded job market, equip you for more senior roles, including leadership opportunities, and help propel you into emerging industries.

Our graduates work in fields as diverse as archaeology, the creative sector, international relations and development, business and marketing, education, museums and cultural heritage, government, and policy-making.

Study 100% online

Some Arts programmes are available via Auckland Online. If you're a working professional or live outside Auckland, you can complete one of the following qualifications remotely.

<https://bit.ly/3nc06s0>

Master of Public Policy

Learn the theoretical and practical skills to develop effective public policy that solves challenging, real-world problems.

auckland.ac.nz/online-mpp

Master of Communication

Gain advanced understanding of the role communication plays in our world and prepare for a career as a communications professional.

Master of Indigenous Studies

Empower yourself with the skills and knowledge to benefit tangata whenua and other Indigenous peoples around the world.

Advance your skills and enrich your future with postgraduate study in Arts

Find out more
auckland.ac.nz/arts



“An Arts degree will prepare you for a fast-paced world with fast-changing trends, while future-proofing your skills!”

“I lead the development and implementation of the Voter Participation Initiative, which aims to increase voter participation in local elections. The role addresses the long-term issues that impact the ability of voters and candidates to participate in local elections.

“Both my role and the Voter Participation Initiative are a first of their kind in local government. They involve a broad, complex and strategic programme of work, which includes analysis, research, advocacy and engagement with a wide range of stakeholders.

“No two days are ever the same, which provides excitement and positive contrast. I enjoy the numerous opportunities I am presented with to provide expert advice on programming, partnerships and innovative initiatives both within the organisation and in the community.

“The MPP programme gave me a firm foundation in the core principles, concepts and methods of public policy research and analysis and developed my potential for leadership in local and national government. The ability to think critically and solve public policy issues is fundamental to my job – something the MPP equips all of its scholars to do.

“The MPP also provided a lot of great opportunities for collaboration on research projects and exposure to workplace settings through external internships. It also offered leadership development through interaction with politicians, leaders and international networks.”

Eddie Tuiavii

Graduate: Postgraduate Diploma in Arts and Master of Public Policy

Eddie works as Senior Advisor Voter Participation at Auckland Council.

Arts

Postgraduate programmes	Taught	Research	Online	Time to complete (full-time study)	Part-time study ¹
Bachelor of Arts (Honours) (BA(Hons))	✓	✓	✗	1 year	✓
Postgraduate Diploma in Arts (PGDipArts)	✓	✗	✗	1 year	✓
Postgraduate Diploma in Global Studies (PGDipGlobalSt)	✓	✗	✗	1 year	✓
Postgraduate Diploma in Language Teaching (PGDipLT)	✓	✗	✗	1 year	✓
Master of Arts (MA)	✓	✓	✗	1 or 18 months	✓
Master of Communication (MC)	✓	✗	✓	18 months	✓
Master of Conflict and Terrorism Studies (MCTS)	✓	✓	✗	1 year or 18 months	✓
Master of Creative Writing (MCW)	✗	✓	✗	1 year	✗
Master of Indigenous Studies (MIndigSt)	✓	✗	✓	1 year or 18 months	✓
Master of Literature (MLitt)	✗	✓	✗	1 year	✓
Master of Public Policy (MPP)	✓	✓	✓	1 year or 18 months	✓
Master of Teaching English to Speakers of Other Languages (MTESOL)	✓	✗	✗	1 year	✓
Master of Theology (MTheol)	✗	✓	✗	1 year	✓
Doctor of Philosophy (PhD)	✗	✓	✗	3–4 years	✓
Interfaculty degrees and diplomas					
Master of Global Studies (MGlobalSt)	✓	✗	✗	18 months	✓
Master of Heritage Conservation (MHerCons)	✓	✗	✗	1 year or 18 months	✓

¹ Part-time study options are generally not available to international students on student visas. International students must be enrolled full-time to meet the requirements of their student visa.

² December start available for 120-point research masters only, subject to supervisor availability.

International students ¹	Points required	Start			More information
		Semester One	Semester Two	1 December ²	
✓	120	✓	✓ ⁴	✗	auckland.ac.nz/ba-hons
✓	120	✓	✓ ⁴	✗	auckland.ac.nz/pgdiparts
✓	120	✓	✗	✗	auckland.ac.nz/pgdipglobalst
✓	120	✓	✓	✗	auckland.ac.nz/pgdiplt
✓	120 or 180	✓	✓ ⁴	✓ ²	auckland.ac.nz/ma
✓	180	✓	✗	✗	auckland.ac.nz/newprogrammes
✓	120 or 180	✓	✓	✗	auckland.ac.nz/mcts
✓	120	✗	✓	✗	auckland.ac.nz/mcw
✓	120 or 180	✓	✓	✗	auckland.ac.nz/mindigst
✓	120	✓	✓	✓ ²	auckland.ac.nz/mlitt
✓	120 or 180	✓	✓	✗	auckland.ac.nz/mpp
✓	120	✓	✓	✗	auckland.ac.nz/mtesol
✓	120	✓	✓	✗	auckland.ac.nz/mtheol
✓	Thesis ⁵	Begin at any time			auckland.ac.nz/phd
✓	180	✓	✗	✗	auckland.ac.nz/mglobalst
✓	120 or 180	✓	✗	✗	auckland.ac.nz/mhercons

⁴ Semester Two start may not be possible for all subjects/majors/specialisations and only if places are available.

⁵ Upon the recommendation of the Academic Head and approval from the Board of Graduate Studies, a candidate may present a corpus of creative work for assessment with a written thesis, comprising an integrated whole.

* Tuition fees will be charged at the respective rate for the subject.

Business School

Would you like to launch a career in business, advance your business knowledge and skills, move up in your current field or change professional direction? Are you passionate about research and innovation that addresses some of the world's biggest challenges? The Business School offers a range of flexible postgraduate study options and pathways to suit your interests, level of experience and career goals.

Our postgraduate taught, research and professional programmes are designed to equip you with industry and practitioner-focused learning, build your professional network and enhance your prospects for career advancement or further study. You will have access to the modern learning and research facilities at the iconic Sir Owen G Glenn Building.

We understand how important it is for postgraduate students to balance study with work and personal commitments, so we have designed our programmes to work around you.

We offer:

- A broad range of Business specialisations at masters, honours or PhD level, so you can pursue your passion
- Professional programmes within quarter-based teaching terms, in the evenings or weekend blocks to suit working professionals
- Part-time options for most programmes, with multiple entry points
- Bridging pathways for graduates from other masters degrees to enable entry into the PhD programme in Business
- A number of fully online qualifications through Auckland Online, which offer additional flexibility for those with work or family responsibilities
- Flexible pathways for you to complete an internationally recognised masters degree that builds on your professional experience, if you do not have a first degree
- Flexible delivery using online components to support in-class workshops
- Shorter qualifications, such as postgraduate certificates and diplomas, if you're not ready to commit to a masters degree

Our **professional programmes** are designed for working professionals, from new and recent graduates to the highly experienced, who are seeking to accelerate or pivot their career. You will be equipped with cutting-edge skills and an advanced understanding of your chosen field within a global context.

For Business graduates, our **taught programmes** embed applied learning opportunities to build on your qualification and help you launch a business career in your chosen specialisation. Alternatively, you could apply your skills to a new field.

Through our specialist masters, honours and PhD **research programmes**, you will develop advanced knowledge, skills and perspectives, as well as benefiting from the opportunity to conduct independent research with real-world impact alongside internationally renowned academics.

auckland.ac.nz/business-pg

Research strengths

At the Business School, we are committed to quality teaching and research in topics that shape the futures of people and organisations for the benefit of New Zealand and the world.

Our academic research enables people to develop ideas, knowledge and skills that shape their own development, advance New Zealand business, influence the global economy and enhance society. Their projects frequently involve collaborations with our postgraduate students and international colleagues.

The Business School focuses on four strategic research and education themes that align closely with the University's commitment to research on issues of national and international significance:

- Innovation and value creation
- Succeeding in international markets
- Productivity and sustainable business
- Leadership and governance

Our researchers work in a number of disciplinary areas:

- Accounting
- Commercial Law
- Economics
- Finance
- Global Management and Innovation (includes Innovation and Entrepreneurship, International Business, and Management)
- Information Systems
- International Business
- Management
- Marketing
- Operations and Supply Chain Management
- Property

We also host research institutes and centres that focus on long-term projects and issues of high relevance, such as building New Zealand's business connections with Asia, digital enterprise, modern slavery, retirement policy, supply chain management, Māori and Pacific business development, applied economics, and energy and resource use.

Career opportunities

Business School graduates occupy leading positions in business and professions within New Zealand and around the world. Our masters degrees in Commerce (with specialisations in eight subject areas) and Property open up opportunities for specialist careers, which are highly valued in industry and the public sector.

Our professional programmes equip graduates to be work-ready in their chosen specialisation, or primed for career progression in leadership or management roles. Our business masters programmes prepare graduates for a new career in business in just 15 to 18 months. Our research masters, honours and PhD programmes lead to change-making careers in innovation, research and academia.

Professional programmes

Master of Business Administration

MBA

This rigorous program provides a breadth of business knowledge, skills and insights for success in senior leadership in a wide range of sectors around the globe.

auckland.ac.nz/mba

Master of Business Analytics

MBusAn

This practice-focused program will equip you to interrogate business challenges and use data to inform organisational strategies.

auckland.ac.nz/mbusan

Master of Applied Finance

MAppFin

You will come to understand the fundamental theories of finance while gaining practical skills to enhance financial decision-making.

auckland.ac.nz/mappfin

Real-world learning that transforms lives and businesses

Find out more
auckland.ac.nz/business-pg



“The MBA really makes you grow as a person because you learn so much, both from the formal teaching and the learning that happens outside the classes. It’s a really rewarding experience.”

“I’ve always been interested in sustainability. Early on in my career, I realised businesses have the power to change society and that this is the area I want to be in: working with businesses to promote positive change.

“After working with different companies, I realised it would be a good idea to learn more of the business side and how to speak that language. I didn’t want to be the sustainability person in the business. I wanted to be the business person that knows sustainability.

“I was already thinking about studying for an MBA, and when we moved to New Zealand, I felt it was the ideal opportunity to go for it. I chose the University of Auckland because of its global recognition and the fact that Auckland is the commercial hub of New Zealand. It was important for me to build networks with people at the heart of industry here.

“The MBA helped me understand the importance of collaboration, and I learnt how to better articulate the business value of sustainability and doing the right thing.

“Studying for the MBA was intense, but really enlightening. You learn in the classroom with these amazing professors, but you also learn from the other students in your cohort. They’re people from a wide range of backgrounds, and that diversity really helps open your mind.”

Monica Mireles Serrano

Graduate: MBA

Monica is currently Head of Sustainability – Global Engagement and Markets at Zespri International.

Business School

Postgraduate programmes (offered in semesters)	Taught / Coursework	Research	PhD pathway ⁹	Time to complete (full-time study)	Part-time study ¹
Bachelor of Commerce (Honours) (BCom(Hons))	✓	✓	✓	12 months	✓
Master of Commerce (MCom)	✓	✓	✓	12, 15 or 18 months	✓
Doctor of Philosophy (PhD)	✗	✓	✓	3–4 years	✓

Postgraduate professional programmes (offered in quarters)	On-campus	Online	Time to complete (full-time study)	Part-time study ¹
Postgraduate Certificate in Leadership and Governance (PGCertLdGov)	✓	✗	12 months ⁵	✓
Postgraduate Diploma in Business (PGDipBus)	✓ ³	✓ ³	12 months	✓
Master of Applied Finance (MAppFin)	✓	✗	18 months	✓
Master of Business Administration (MBA)	✓	✓ ¹⁰	18 months ⁷	✓
Master of Business Analytics (MBusAn)	✓	✗	15 months ⁶	✓
Master of Business Development (MBusDev)	✗	✓	12 or 18 months ⁶	✓
Master of Business Management (MBM)	✓	✗	12 or 18 months ⁶	✓
Master of Information Governance (MInfoGov)	✗	✓	18 months	✓
Master of Management (MMgt)	✓	✗	15 months	✗
Master of Professional Accounting (MProfAcctg)	✓	✗	18 months	✗
Master of Property Practice (MPropPrac)	✗	✓	18 months	✓

Interfaculty degrees and diplomas	Taught / Coursework	Research	PhD pathway ⁹	Time to complete (full-time study)	Part-time study ¹
Postgraduate Diploma in Bioscience Enterprise (PGDipBioEnt)	✓	✗	✗	12 months	✓
Postgraduate Diploma in Operations Research and Analytics (PGDipORAn)	✓	✗	✗	12 months	✓
Master of Bioscience Enterprise (MBioEnt)	✗	✓	✓	12 months	✓
Master of Taxation Studies (MTaxS)	✓	✓	✓	12 or 18 months	✓
Master of Information Technology (MInfoTech)	✓	✗	✗	12, 18 or 24 months	✓
Master of Operations Research and Analytics (MORAn)	✓	✓	✓	12 or 18 months	✓
Master of Organisational Psychology (MORgPsych)	✓	✓	✓	18 months	✗

Explore our short qualifications

We also have a range of postgraduate certificate and diploma programmes that you can choose from. These flexible programmes enable you to update your business skills and knowledge, while enhancing your employability.

auckland.ac.nz/business

¹ Part-time study options are generally not available to international students on student visas. International students must be enrolled full-time to meet the requirements of their student visa.

² 1 December start available for 120-point research masters only subject to supervisor availability.

³ Delivered through a combination of online and campus-based learning. The first 60 points are delivered through Auckland Online, with the final 60 points delivered either online or on-campus depending on the specialisation.

⁴ Late Year Term entry in November is only available for the 240 point programme.

International students ¹	Points required	Start			More information
		Semester One	Semester Two	1 December ²	
✓	120	✓	✓	✗	auckland.ac.nz/bcom-hons
✓	120 or 180	✓	✓	✓ ²	auckland.ac.nz/mcom
✓	Thesis	Begin at any time			auckland.ac.nz/phd

International students ¹	Points required	Start			More information
		Q2	Q3	Q4	
✗	60	✗	✓	✗	auckland.ac.nz/pgcertldgov
✗	120	✓	✗	✓	auckland.ac.nz/pgdipbus
✓	180	✗	✗	✓	auckland.ac.nz/mappfin
✗	180	✗	✓	✗	auckland.ac.nz/mba
✓	180	✓	✗	✗	auckland.ac.nz/mbusan
✓ ⁸	120 or 180	✓	✗	✓	auckland.ac.nz/online-mbusdev
✗	120 or 180	✓	✗	✓	auckland.ac.nz/mbm
✓ ⁸	120 or 180	✓	✗	✓	auckland.ac.nz/online-minfogov
✓	180	✓	✗	✓	auckland.ac.nz/mgmt
✓	240	✓	✗	✓	auckland.ac.nz/mprofacctg
✓ ⁸	180	✓	✗	✓	auckland.ac.nz/online-mproprac

International students ¹	Points required	Start			More information
		Semester One	Semester Two	1 December ²	
✓	120	✓	✗	✗	auckland.ac.nz/pgdipbioent
✓	120	✓	✓	✗	auckland.ac.nz/pgdiporan
✓	120	✓	✗	✓ ²	auckland.ac.nz/mbioent
✓	120 or 180	✗	✓	✓	auckland.ac.nz/mtaxs
✓	120, 180 or 240	✗	✓	✓ ⁴	auckland.ac.nz/minfotech
✓	120 or 180	✓	✓	✓ ²	auckland.ac.nz/moran
✓	180	✓	✗	✗	auckland.ac.nz/morgpsych

⁵ Part-time only.

⁶ Evening delivery.

⁷ MBA is delivered in weekend block format – Friday afternoon and all day Saturday.

⁸ Offered fully online. Note: These programmes are open to international students but designed for a domestic audience.

⁹ A postgraduate certificate (60 points) and a postgraduate diploma (120 points) are now available as pathways from many Professional masters and other degrees to the PhD programme in the Business School.

¹⁰ Subject to standard regulatory approval

“It can be difficult to make the step to commit so much time to yourself and your art. But it gives you great opportunity to deepen your understanding of your practice and to enrich your engagement within your field of work. In short, just go for it!”

“My creative practice involves various forms of photography, as well as digital and new media. I explore glitches, broken code, and artificial intelligence in the digital realm. In photography, I investigate camera-less techniques, light leaks, and damaged or expired film.

“I collect and work with old cameras. One of my favourites is my Asahi Pentax. It belonged to my great-grandfather. Working with cameras that were once owned by other people is a special way to connect with distant times and places.

“Throughout my postgraduate studies, I have been photographing the Tāmaki River and its streams, estuaries and tributary arms. I am interested in the ecology of mangroves and wetlands and their complexity.

“Doctoral study can be an intimidating prospect, but it’s a great opportunity to dedicate an extended period to your creative practice and research interests. No matter our interests, or the style of our work, the teaching staff always provide feedback to help us deepen our enquiries in our chosen practice. There’s a lot of freedom to experiment, try new things and push ideas and processes to their limit.

“Your supervisors are invaluable because they offer their experience in the professional field of Fine Arts. Added to that is the fact they too were once postgraduate students. You also become part of a community you can share your research with. You gain insight into others’ research and work by attending seminars and lectures from professionals in the field, as well as from your fellow postgraduate students.”

Roma Anderson

PhD candidate in Fine Arts with scholarly creative work



Creative Arts and Industries

Join our lively research environment filled with fellow creatives and internationally recognised artists, practitioners, teachers and researchers. We offer programmes in Architecture, Dance, Design, Fine Arts, Heritage Conservation, Music, Urban Design and Urban Planning.

We encourage imaginative thinking, fresh ideas and innovation. Studying with us will help set you up for a life of creative research, discovery and practice. Our strong links with national and international creative communities enable you to connect and foster relationships with relevant professional and business organisations as part of your study.

There's something for everyone, regardless of your educational background, career goals, and study needs: part-time study options, research-focused qualifications, and programmes towards upgrading your leadership potential. We also offer single-semester Postgraduate Certificate qualifications for those who want stronger educational foundations or a taste of what's to come before embarking on longer-term postgraduate study.

The PhD is available for advanced research across all our disciplines. You can also choose a Doctor of Fine Arts or PhD with scholarly creative work. In that way, your research and final submission can link theory with practical elements such as contemporary art, design, performance or film.

Research strengths

- **Architecture, Heritage Conservation, Urban Planning, Urban Design:** urban and architectural resilience and sustainability, urban and spatial planning and placemaking, design research, and the history, theory and pedagogy of the built environment, including Māori and Pacific-focused research
- **Dance Studies:** choreography, performance, community dance, dance education, movement therapy, ethnography, history and technology.
- **Design:** advanced technologies, global challenges, community engagement, natural environment, enterprise, theory and practice methodologies, impact and leadership
- **Fine Arts:** curatorial, critical and theoretical research contributing to local and international contemporary arts discourse
- **Music:** performance, composition, improvisation, music in historical and social contexts, music education and pedagogy, music production, musicians' health

Creative careers

As a faculty, we promote creative rebellion – pushing existing boundaries and problem solving to overcome creative challenges. Students in our programmes advance their skills under the guidance of leading practitioners, academics and researchers, with a strong focus on creative thinking.

Students also develop important supporting skills and attitudes: effective communication, curiosity, leadership, resilience and perseverance, important assets for working in any field including academia.

Combined with proficiency in the latest digital and technical resources in these fields, students graduate with a well-rounded creative education, enabling them to better adapt to changes in the job market.

Careers that our graduates go into include:

- **Architecture, Heritage Conservation, Urban Planning, Urban Design:** architect, building industry consultant, digital design professional, heritage consultant, urban planner, urban designer, resource consent planner, transportation planner
- **Dance Studies:** professional choreographer, professional dancer, arts administrator/manager/director, educator
- **Design:** design strategist, digital/experience/interaction/product/service designer
- **Fine Arts:** artist, educator, art curator, creative director, art writer
- **Music:** educator, performer, music producer, music journalist, instrumental teacher, arranger, composer

Advance your creative interests through collaboration and research

Find out more
auckland.ac.nz/creative

Creative Arts and Industries

Postgraduate programmes		Taught	Research	Time to complete (full-time study)	Part-time study ¹	International students ¹
Architecture, Urban Planning and Urban Design	Graduate Diploma in Architectural Studies (GradDipAS)	✓	✗	1-1.5 years	✗	✓
	Postgraduate Diploma in Architecture (PGDipArch)	✓	✗	1 year	✓	✓
	Master of Architecture (MArch)	✗	✓	1 year	✓	✓
	Master of Architecture (Professional) (MArch(Prof)) ⁸	✗	✓	2 years	✓	✓
	Master of Architecture (Professional) and Heritage Conservation (MArch(Prof)HerCons) ⁸	✗	✓	2.5 years	✓	✓
	Master of Architecture (Professional) and Urban Design (MArch(Prof)UrbDes) ⁸	✗	✓	2.5 years	✓	✓
	Master of Architecture (Professional) and Urban Planning (Professional) (MArch(Prof)UrbPlan(Prof)) ⁸	✗	✓	3 years	✓	✓
	Master of Urban Design (MUrbDes)	✓	✗	1 year	✓	✓
	Master of Urban Planning (MUrbPlan)	✗	✓	1 year	✓	✓
	Master of Urban Planning (Professional) (MUrbPlan(Prof)) ⁸	✓	✗	2 years	✓	✓
	Master of Urban Planning (Professional) and Heritage Conservation (MUrbPlan(Prof)HerCons) ⁸	✓	✗	2.5 years	✓	✓
	Master of Urban Planning (Professional) and Urban Design (MUrbPlan(Prof)UrbDes) ⁸	✓	✗	2.5 years	✓	✓
	Doctor of Philosophy (PhD)	✗	✓	3-4 years	✓	✓
	Dance Studies	Bachelor of Dance Studies (Honours) (BDanceSt(Hons))	✓	✗	1 year	✓
Postgraduate Diploma in Dance Studies (PGDipDanceSt)		✓	✗	1 year	✓	✓
Master of Community Dance (MCommDance)		✗	✓	1 year	✓	✓
Master of Dance Movement Therapy (MDMT)		✗	✓	2 years	✓	✓
Master of Dance Studies (MDanceSt)		✗	✓	1-1.5 years	✓	✓
Doctor of Philosophy (PhD)		✗	✓	3-4 years	✓	✓
Design	Postgraduate Certificate in Design (PGCertDes)	✓	✗	0.5 year	✓	✓
	Master of Design (MDes)	✓	✓	1-1.5 years	✓	✓
	Doctor of Philosophy (PhD)	✗	✓	3-4 years	✓	✓
Fine Arts	Postgraduate Certificate in Fine Arts (PGCertFA)	✓	✗	0.5 year	✓	✓
	Postgraduate Diploma in Fine Arts (PGDipFA)	✓	✗	1 year	✓	✓
	Master of Fine Arts (MFA)	✓	✓	1-1.5 years	✓	✓
	Doctor of Fine Arts (DocFA)	✗	✓	3-4 years	✓	✓
	Doctor of Philosophy (PhD)	✗	✓	3-4 years	✓	✓
Music	Bachelor of Music (Honours) (BMus(Hons))	✓	✗	1 year	✓	✓
	Graduate Diploma in Music (GradDipMus)	✓	✗	1 year	✓	✓
	Postgraduate Certificate in Music (PGCertMus)	✓	✗	0.5 year	✓	✓
	Postgraduate Diploma in Music (PGDipMus)	✓	✗	1 year	✓	✓
	Master of Music (MMus)	✓	✓	1-1.5 years	✓	✓
	Doctor of Philosophy (PhD)	✗	✓	3-4 years	✓	✓
Interfaculty degrees and diplomas						
	Master of Heritage Conservation (MHerCons)	✓	✗	1-1.5 years	✓	✓

Points required	Semester start			More information
	One	Two	1 December ²	
120 or 150	✓	✗	✗	auckland.ac.nz/graddipas
120	✓	✗	✗	auckland.ac.nz/pgdiparch
120	✓	✓	✓ ²	auckland.ac.nz/march
240	✓	✓ ⁴	✗	auckland.ac.nz/marchprof
300	✓	✗	✗	auckland.ac.nz/marchprothercons
300	✓	✗	✗	auckland.ac.nz/marchprofurbdes
360	✓	✗	✗	auckland.ac.nz/marchprofurbplanprof
120	✓	✓ ⁷	✗	auckland.ac.nz/murbdes
120	✓	✓	✓ ²	auckland.ac.nz/murbplan
240	✓	✗	✗	auckland.ac.nz/murbplanprof
300	✓	✗	✗	auckland.ac.nz/murbplanprothercons
300	✓	✗	✗	auckland.ac.nz/murbplanprofurbdes
Thesis ⁵	Begin at any time			auckland.ac.nz/creative-doctoral-study
120	✓	✓ ⁴	✗	auckland.ac.nz/bdancest-hons
120	✓	✓ ⁴	✗	auckland.ac.nz/pgdipdancest
120	✓	✓	✓ ²	auckland.ac.nz/mcommdance
240	✓	✗	✗	auckland.ac.nz/mdmt
120 or 180	✓	✓	✓ ²	auckland.ac.nz/mdancest
Thesis ⁵	Begin at any time			auckland.ac.nz/creative-doctoral-study
60	✓	✗	✗	auckland.ac.nz/pgcertdes
120 or 180	✓	✗	✗	auckland.ac.nz/mdes
Thesis ⁵	Begin at any time			auckland.ac.nz/creative-doctoral-study
60	✓	✓	✗	auckland.ac.nz/pgcertfa
120	✓	✓	✗	auckland.ac.nz/pgdipfa
120 or 180	✓	✓	✗	auckland.ac.nz/mfa
360	Begin at any time			auckland.ac.nz/docfa
Thesis ⁵	Begin at any time			auckland.ac.nz/creative-doctoral-study
120	✓	✓ ⁴	✗	auckland.ac.nz/bmus-hons
120	✓	✗	✗	auckland.ac.nz/graddipmus
60	✓	✓	✗	auckland.ac.nz/pgcertmus
120	✓	✓ ⁴	✗	auckland.ac.nz/pgdipmus
120 or 180	✓	✓ ⁴	✓ ²	auckland.ac.nz/mmus
Thesis ⁵	Begin at any time			auckland.ac.nz/creative-doctoral-study
120 or 180	✓	✗	✗	auckland.ac.nz/mhercons

“What was really appealing about the Master of Social Work programme was the challenge and growth it offered.”

“After a few years of being a full-time parent, I began to seek out opportunities that would allow me to bring together things: my previous work experience supporting people facing hardship; and my interest in how practical care of people experiencing crisis interacts with structural and societal frameworks.

“I wanted to work in a job that considered both the big picture of structural change and the more immediate needs of a person / whānau within the system.

“Masters level study really challenged me to become a more critical and reflective thinker. The practical placements also really helped me grow and become more confident before re-entering the workforce.

“You meet great people who become your colleagues and contacts. I studied part-time, so I was a part of two cohorts and got to know my classmates in both. I especially appreciated having people working in social work roles come and teach us. That was very insightful.

“The practical placements were excellent learning experiences. My first placement with Lifewise Housing First was great. It was very interesting trying to reconcile what we had learned and discussed in classes with the day-to-day work in an organisation. I did my placement there alongside another student from my cohort which meant we could do peer supervision; and two and a half years later, we are now both working together as colleagues.

“I would recommend this programme to people who want to really consider how they work with others and why. Previously in my career, I have felt like I was crashing around the place, trying to do something good but not having the skills to critically reflect on what I was doing. This programme has been great in helping me develop the skills and confidence I needed to re-enter the workforce.”

Rachel Bruns

Graduate: Master of Social Work (Professional)



Education and Social Work

Postgraduate study at the Faculty of Education and Social Work is centred around creating a better future and inspiring people to reach their potential. Our study options span Education, Social Work, Counselling, Community Leadership and Professional Supervision. Our postgraduate students are advancing their knowledge, leadership skills and career opportunities, while creating positive change in their communities.

A passion for people is at the heart of research and practice at the Faculty of Education and Social Work. Our postgraduate community are leaders in research and teaching, addressing wide-ranging education and social justice issues.

Here, learning has impact. Our staff and students contribute vital knowledge to the education and wellbeing of communities throughout Aotearoa New Zealand as well as further afield. Our research harnesses the abilities of our diverse student body to improve education and social justice outcomes. Whether you enrol in taught or research programmes, you will be surrounded and supported by world-class academics.

Our collaborative relationships with schools and communities of practice have enabled the faculty to secure significant funding for its research and professional fellowships. We also offer postgraduate study scholarships for outstanding researchers from New Zealand and around the world.

To suit the needs of working professionals, many of our programmes offer flexible study options, including evening courses, online learning and intensive block courses during school holidays. You can also benefit from our extensive academic and personal support services for postgraduate students.

So join our award-winning community of active learners. Like you, we're dedicated to finding research-informed solutions that will improve the lives of generations to come.

Research strengths

Research at the faculty ranges across diverse themes including: advancing equity and social justice; Pasifika education research; leading learning; promoting lifelong wellbeing; supporting intercultural inclusiveness; and enhancing indigenous opportunities.

Research strengths include:

- Applied theatre in education
- Education and schooling success for diverse communities within New Zealand
- Educational leadership
- Health education, physical education and sports studies
- Knowledge in education
- Literacies and languages
- Pacific education, languages and communities
- Māori and indigenous language revitalisation, language education and language policy
- Social work practice strategies for promoting the wellbeing of diverse populations

Research and Professional Development Centres

The faculty is home to internationally recognised research centres and units exploring a wide range of educational and social science research.

- Wolf Fisher Research Centre
- The Centre for Asia Pacific Refugee Studies
- Centre for Arts and Social Transformation
- The Marie Clay Research Centre
- Centre for Community Research and Evaluation
- Centre for Child and Family Research
- The Richard Tinning Research Unit
- Knowledge and Education Research Unit
- Critical Research Unit in Applied Theatre
- Research Unit in Pacific and International Education

New programme

Master of Regional Development (MRegDev)

It will provide the latest academic and policy expertise to those with professional experience working in regional and iwi policy in Aotearoa New Zealand and internationally, or to those looking to enter the field. There are 180 and 120-point pathways available, with entry determined by previous study and GPA attainment.

Designed specifically to draw on interfaculty expertise, the Master of Regional Development will provide students with the opportunity to critically engage with bodies of advanced scholarly knowledge and underlying principles in the fields of regional development, while exploring the increasing coalescence of issues of environmental sustainability and social, cultural, and economic well-being.

auckland.ac.nz/mrd

**No. 1 University in
New Zealand for
Education***

*QS World University Rankings by Subject 2022

Find out more
auckland.ac.nz/education-pg

Education and Social Work

Postgraduate programmes		Taught	Research	Online	Time to complete (full-time study)	Part-time study ¹
Counselling	Postgraduate Diploma in Counselling Theory (PGDipCounsTh)	✓	✗	✗	1 year	✓
	Master of Counselling (MCouns)	✗	✓	✗	1 or 2 years	✓
Education	Bachelor of Education (Teaching) (Honours) (BEd(Tchg)(Hons))	✓	✓	✗	1 year	✓
	Graduate Diploma in Teaching (GradDipTchg) – Early Childhood Education/Primary/Secondary	✓	✗	✓	1 year	✓
	Postgraduate Certificate in Teaching Linguistically Diverse Learners	✓	✗	✗	2 years part-time	✓
	Postgraduate Diploma in Teaching Linguistically Diverse Learners	✓	✗	✗	2–4 years part-time	✓
	Postgraduate Certificate in Education (PGCertEd)	✓	✗	✗	1 semester	✓
	Postgraduate Certificate in Higher Education (PGCertHigherEd)	✓	✗	✗	Part-time only	✓
	Postgraduate Diploma in Education (PGDipEd) - Literacy	✓	✗	✗	1 year	✓
	Postgraduate Diploma in Educational Leadership (PGDipEdLd)	✓	✗	✗	1 year	✓
	Master of Education (MEd)	✗	✓	✗	1 year or 18 months	✓
	Master of Educational Leadership (MEdLd)	✓	✓	✓	1 year or 18 months	✓
	Master of Education Practice (MEdPrac)	✓	✗	✓	1 year or 18 months	✓
	Master of Higher Education (MHigherEd)	✓	✗	✗	Part-time only	✓
	Master of Professional Supervision (MProfSup)	✗	✓	✗	18 months	✓
	Master of Professional Supervision – Practice (MProfSupPrac)	✓	✗	✗	18 months	✓
	Doctor of Education (EdD)	✗	✓	✗	4 years (first 2 years part-time)	✓
	Doctor of Philosophy (PhD)	✗	✓	✗	3–4 years	✓
	Education options also exist within the programmes for BA(Hons) and MA. See auckland.ac.nz/ba-hons and auckland.ac.nz/ma					
Social Work	Postgraduate Certificate in Professional Supervision (PGCertProfSup)	✓	✗	✗	Part-time only	✓
	Postgraduate Certificate in Social and Community Leadership (PGCertSCL)	✓	✗	✗	1 semester	✓
	Postgraduate Diploma in Professional Supervision (PGDipProfSup)	✓	✗	✗	1 year	✓
	Postgraduate Diploma in Social Work (PGDipSW)	✓	✗	✗	1 year	✓
	Master of Social and Community Leadership (MSCL)	✗	✓	✗	18 months	✓
	Master of Social Work (MSW)	✗	✓	✗	1 or 2 years	✓
	Master of Social Work (Professional) (MSW(Prof))	✓	✗	✗	2 years	✓
	Doctor of Philosophy (PhD)	✗	✓	✗	3–4 years	✓
Interfaculty degrees and diplomas						
Master of Professional Studies (MProfStuds) – Education/Mathematics Education		✓	✗	✗	1 year	✓
Postgraduate Certificate in Regional Development (PGCertRegDev)		✓	✗	✓	1 semester	✗
Master of Regional Development (MRegDev)		✓	✓	✓	Full-time: 1 year Part-time: varies	✓

International students ¹	Points required	Start		More information
		Semester One	Semester Two	
✓	120	✓	✗	auckland.ac.nz/pgdipcounsth
✓	120 or 240	✓	✗	auckland.ac.nz/mcouns
✓	120	✓	✓	auckland.ac.nz/bedtchg-hons
✓	150	✓	✗	auckland.ac.nz/graddiptchg-ece auckland.ac.nz/graddiptchg-primary auckland.ac.nz/graddiptchg-sec
✓	60	✓	✗	auckland.ac.nz/pgcerttldl
✓	120	✓	✗	auckland.ac.nz/pgdiptldl
✓	60	✓	✓	auckland.ac.nz/pgcerted
✓	60	✓	✗	auckland.ac.nz/pgcerthighed
✓	120	✓	✓	auckland.ac.nz/pgdiped
✓	120	✓	✓	auckland.ac.nz/pgdipedld
✓	120 or 180	✓	✓	auckland.ac.nz/med
✓	120 or 180	✓	✓	auckland.ac.nz/medld
✓	120 or 180	✓	✓	auckland.ac.nz/medprac
✗	120 or 180	✓	✗	auckland.ac.nz/mhighed
✓	180	✓	✓	auckland.ac.nz/newprogrammes
✓	180	✓	✓	auckland.ac.nz/newprogrammes
✗	360	✗	✓	auckland.ac.nz/edd
✓	Thesis ⁵	Begin at any time		education.auckland.ac.nz/phd
✗	60	✓	✗	auckland.ac.nz/pgcertprofsup
✓	60	✓	✓	auckland.ac.nz/pgcertscl
✗	120	✓	✓	auckland.ac.nz/pgdipprofsup
✓	120	✓	✓	auckland.ac.nz/pgdipsw
✓	180	✓	✓	auckland.ac.nz/mscl
✓	120 or 240	✓	✓	auckland.ac.nz/msw
✓	240	✓	✗	auckland.ac.nz/mswprof
✓	Thesis ⁵	Begin at any time		education.auckland.ac.nz/phd
✓	120	✓	✓	auckland.ac.nz/mprofstuds
✓	60	✓	✓	auckland.ac.nz/pgcertregdev
✓	120 or 180	Begin at any time		auckland.ac.nz/mrd

Engineering

Prepare to take on global challenges with the right technical acumen, theoretical knowledge and hands-on learning opportunities provided by our world-class engineering experts. Our postgraduate options are broad, catering to those with engineering undergraduate backgrounds, professional engineers and others.

The Faculty of Engineering | Te Herenga Mātai Pūkaha is Aotearoa's top Engineering faculty.* We excel in teaching and research across five unique departments, which offer over 20 specialisations that will equip you with the skills to contribute to a better world.

Our postgraduate cohort is becoming as diverse as our country and workplaces. With students from over 65 countries and all walks of life enrolled, you'll be exposed to the core course material that contributes to our reputation of educational excellence, as well as the benefits that come with the many perspectives of your peers. We believe in cultivating a welcoming learning environment that creates the right values needed to address the global challenges of tomorrow – from climate change, environmental sustainability and structural safety, to managing engineering teams, creating accessible software and improving healthcare systems.

There's something for everyone, regardless of your educational background, career goals and study needs. Your opportunities include part-time study options, research-focused qualifications, and programmes that upgrade your management potential. We now offer an increasing range of single-semester Postgraduate Certificate qualifications. These are ideal if you want to strengthen specific educational foundations – and especially if you wish to try a short programme before committing to a longer-term study option.

What unifies our staff and students is our belief in the power engineering has to tackle the future of work and contribute to a world we'd like to live in. Much of what our graduates have taken with them to academia, industry and their communities are values beyond their textbooks: collaboration, intellectual independence, leadership, practical skills and the empathy to understand the environments around them.

*QS World University Rankings by Subject 2022

Research strengths

With 17 world class research centres, we offer you the chance to learn from globally recognised experts, in state-of-the-art facilities. We boast strong collaborations with industry and other research organisations, and work in increasingly cross-disciplinary fields.

Discover some of our research areas:

- Advanced, novel, smart and new materials
- Aerospace and space systems engineering
- Biomechanical engineering
- Computational science and engineering
- Disaster management and civil engineering for earthquake mitigation
- Engineering products and processes for sustainability
- Food and bioproducts
- Geothermal and reservoir engineering
- Healthcare and medical devices
- Operations research and analytics
- Manufacturing, automation and Industry 4.0
- Power systems engineering
- Project management
- Robotics and human interaction
- Software engineering
- Structural engineering
- Water engineering

auckland.ac.nz/foe-research-opportunities

Study 100% online

Some of our programmes are now available remotely via Auckland Online. If you're a working professional or you live away from Auckland, you can very conveniently complete one of the following qualifications.

- Master of Engineering Project Management
- Master of Civil Engineering
- Project Management Bodies of Knowledge

And we're adding more every year!

<https://bit.ly/3nc06s0>

Career opportunities

Further study at any postgraduate level gives you a competitive edge, improving your employability in specialised industries.

Our study options are designed to improve an engineer's expertise – upskilling them to become more knowledgeable in their field and leading them into a stronger career path.

Many of our students are already working professionals. They pursue our postgraduate programmes to develop their skills and propel themselves into management and/or leadership roles. Such students often enrol in a postgraduate programme without having studied Engineering at undergraduate level. They come from backgrounds such as policymaking, planning, evaluation, design, science, business, product and infrastructure.

How to work with us

- Discover what our faculty is researching and the projects that supervisors are offering. profiles.auckland.ac.nz
- Get involved with one of our many research centres. Find out more about these centres online. auckland.ac.nz/foe-research-centres
- Work with the Newmarket Innovation Precinct (NIP). NIP connects industry professionals with our University's research and technical experts. <https://nip.auckland.ac.nz/>
- Explore the research opportunities available to students. auckland.ac.nz/foe-research-opportunities

*Diverse,
world-class
research and
technology towards
a bolder future*

Find out more
engineering.auckland.ac.nz



“I believe doctoral research will help me broaden my horizons in the interface between Māori culture and environmental engineering.”

“As a member of Te Ārawa and Tainui iwi, I am regularly engaging with various members of Te Ārawa and Ngāti Tūwharetoa hapū, and obtaining historical and cultural mōhiotanga (knowledge) of Māori communities’ spiritual and physical links with geothermal resources in the central North Island. I also explore the different worldviews associated with geothermal development to pursue holistic decision-making and ensure cultural, environmental, social and economic sustainability.

“Within geothermal development, Māori communities are under-benefited, and with little sustainability, our Te Ārawa and Tūwharetoa people are at risk of losing the very gift that our ancestors have thrived with for hundreds of years.

“I am originally from Rotorua where I was immersed in Māori culture and language, and utilised geothermal resources as a member of the local community. By combining my cultural heritage with an education from a Western engineering institute, I have the ability to help facilitate sustainable change and increase cultural awareness in the engineering space for our people.

“I hope to raise our younger generation’s awareness of past, present and future issues that Māori communities may face if the current direction of geothermal utilisation continues.”

Nona Hohepa-Taute

PhD candidate in Environmental Engineering

Nona is a recipient of a Ngāti Māhino Iwi Authority scholarship and GNS Science Doctoral Research Award. His thesis aims to facilitate more efficient collaboration between Māori communities and non-Māori parties to utilise and develop geothermal resources.



Watch Nona speak about his postgraduate experience at auckland.ac.nz/gradvids

Engineering

Postgraduate programmes	Taught	Research	Online	Time to complete (full-time study)	Part-time study ¹
Postgraduate Certificate in Aerospace Engineering (PGCertAerospaceEng)	✓	✗	✗	6 months	✗
Postgraduate Diploma in Aerospace Engineering (PGDipAerospaceEng)	✓	✗	✗	1 year	✗
Master of Aerospace Engineering (MAerospaceEng)	✓	✓	✗	Varies	✗
Postgraduate Certificate in Civil Engineering (PGCertCivilEng)	✓	✗	✗	1 semester	✓
Postgraduate Diploma in Civil Engineering (PGDipCivilEng)	✓	✗	✗	2 semesters	✓
Master of Civil Engineering (MCivilEng)	✓	✓	✓	Varies	✓
Postgraduate Certificate in Earthquake Engineering (PGCertEqEng)	✓	✗	✗	6 months	✗
Master of Earthquake Engineering (MEqEng)	✗	✓	✗	1 year - 18 months	✗
Postgraduate Certificate in Engineering (PGCertEng)	✓	✗	✗	6 months	✓
Postgraduate Diploma in Engineering (PGDipEng)	✓	✗	✗	1 year	✓
Master of Engineering (ME)	✓	✓	✗	1 year - 18 months	✓
Master of Engineering Management (MEMgt)	✗	✗	✗	1 year	✓
Postgraduate Certificate in Engineering Project Management (PGCertEPM)	✓	✗	✗	6 months	✓
Postgraduate Certificate in Engineering, Sustainable Resource Recovery specialisation (PGCertEng)	✓	✗	✗	6 months	✓
Postgraduate Diploma in Engineering, Sustainable Resource Recovery specialisation (PGDipEng)	✓	✗	✗	1 year	✓
Master of Engineering Studies in Sustainable Resource Recovery (MEngSt)	✓	✗	✗	Varies	✓
Master of Engineering Studies (MEngSt)	✓	✓	✗	1 year - 18 months	✓
Postgraduate Certificate in Geothermal Energy Technology (PGCertGeothermTech)	✓	✗	✗	6 months	✓
Postgraduate Certificate in Infrastructure Asset Management (PGCertInfraAssetMgt)	✓	✗	✗	6 months	✓
Postgraduate Diploma in Infrastructure Asset Management (PGDipInfraAssetMgt)	✓	✗	✗	1 year	✓
Master of Infrastructure Asset Management (MInfraAssetMgt)	✓	✓	✗	1 year - 18 months	✓
Postgraduate Certificate in Materials Engineering (PGCertMaterialsEng)	✓	✗	✗	6 months	✗
Postgraduate Diploma in Materials Engineering (PGDipMaterialsEng)	✓	✗	✗	1 year	✓
Master of Materials Engineering (MMaterialsEng)	✓	✓	✗	1 year - 18 months	✓
Postgraduate Certificate in Medical Engineering (PGCertMedicalEng)	✓	✗	✗	6 months	✓
Postgraduate Diploma in Medical Engineering (PGDipMedicalEng)	✓	✗	✗	1 year	✓
Master of Medical Engineering (MMedicalEng)	✓	✗	✗	1 year - 18 months	✓
Master of Professional Engineering (MProfEng)	✓	✗	✗	Varies	✓
Postgraduate Certificate in Robotics and Automation Engineering (PGCertRobotEng)	✓	✗	✗	6 months	✗
Postgraduate Diploma in Robotics and Automation Engineering (PGDipRobotEng)	✓	✗	✗	1 year	✗
Master of Robotics and Automation Engineering (MRobotEng)	✓	✗	✗	Varies	✗
Interfaculty degrees and diplomas					
Postgraduate Certificate in Operations Research and Analytics (PGCertORAn)	✓	✗	✗	6 months	✓
Postgraduate Diploma in Operations Research and Analytics (PGDipORAn)	✓	✗	✗	1 year	✓
Master of Disaster Management (MDisMgt)	✓	✗	✗	Varies	✓
Master of Operations Research and Analytics (MORAn)	✓	✓	✗	1 year - 18 months	✓
Master of Energy (MEnergy)	✓	✓	✗	1 year - 18 months	✓
Master of Engineering Geology (MEngGeol)	✗	✓	✗	Varies	✓
Master of Engineering Project Management (MEPM)	✓	✗	✓	1 year - 18 months	✓
Master of Engineering Project Management, Health Projects specialisation (MEPM-H)	✓	✗	✗	1 year	✗

International students ¹	Points required	Start		More information
		Semester One	Semester Two	
✓	60	✓	✓	auckland.ac.nz/pgcertaerospaceeng
✓	120	✓	✓	auckland.ac.nz/pgdipaerospaceeng
✓	120 or 180	✓	✓	auckland.ac.nz/maerospaceeng
✓	60	✓	✓	auckland.ac.nz/pgcertcivileng
✓	120	✓	✓	auckland.ac.nz/pgdipcivileng
✓	120 or 180	✓	✓	auckland.ac.nz/mcivileng
✓	60	✓	✓	auckland.ac.nz/pgcerteqeng
✓	120 or 180	✓	✓	auckland.ac.nz/meqeng
✓	60	✓	✓	auckland.ac.nz/pgcerteng
✓	120	✓	✓	auckland.ac.nz/pgdipeng
✓	120 or 180	✓	✓	auckland.ac.nz/me
✓	120	✓	✓	auckland.ac.nz/memgt
✓	60	✓	✓	auckland.ac.nz/pgcertepm
✓	60	✓	✓	auckland.ac.nz/srr
✓	120	✓	✓	auckland.ac.nz/srr
✓	120 or 180	✓	✓	auckland.ac.nz/srr
✓	120 or 180	✓	✓	auckland.ac.nz/mengst
✓	60	X	✓	auckland.ac.nz/pgcertgeothermtech
✓	60	✓	✓	auckland.ac.nz/pgcertinfraasmtgt
✓	120	✓	✓	auckland.ac.nz/pgdipinfraasmtgt
✓	120 or 180	✓	✓	auckland.ac.nz/minfraasmtgt
✓	60	✓	✓	auckland.ac.nz/pgcertmaterialseng
✓	120	✓	✓	auckland.ac.nz/pgdipmaterialseng
✓	120 or 180	✓	✓	auckland.ac.nz/mmaterialseng
✓	120	✓	✓	auckland.ac.nz/pgcertmedicaleng
✓	120	✓	✓	auckland.ac.nz/pgdipmedicaleng
✓	120 or 180	✓	✓	auckland.ac.nz/mmedicaleng
✓	180 or 240	✓	✓	auckland.ac.nz/mprofeng
✓	60	✓	✓	auckland.ac.nz/pgcertroboteng
✓	120	✓	✓	auckland.ac.nz/pgdiproboteng
✓	120 or 180	✓	✓	auckland.ac.nz/mroboteng
✓	60	✓	✓	auckland.ac.nz/pgcertoran
✓	120	✓	✓	auckland.ac.nz/pgdiporan
✓	120 or 180	✓	✓	auckland.ac.nz/mdismgt
✓	120 or 180	✓	✓	auckland.ac.nz/moran
✓	120 or 180	✓	✓	auckland.ac.nz/menergy
✓	120 or 180	✓	✓	auckland.ac.nz/menggeol
✓	120 or 180	✓	✓	auckland.ac.nz/mepm
✓	120	✓	✓	auckland.ac.nz/mepmh

Global Studies

Be the change. Join New Zealand’s only postgraduate Global Studies programme and develop the knowledge to tackle today’s complex challenges. Global Studies is an emerging transdisciplinary academic field. And our postgraduate students help shape its future.

We’re a close-knit academic community, committed to shaping a better future through our work. With Global Studies postgraduate study, you will learn how to think on a global scale – and develop skills to turn that thinking into action when tackling contemporary issues.

Our students dissect impactful topics, such as human rights, inequality, social change, sustainability, and transnationalism. Global Studies’ broad scope enables you to dive into topics you’re passionate about – all within a flexible but robust curriculum framework.

Through our taught courses, you will be exposed to new ways of thinking about the world as you deepen your understanding of the key themes of Global Studies. You’ll also gain a strong foundation in research design. Through independent research, you can tailor your own projects according to personal interests and goals, with support and supervision from our wide network of staff.

We offer three qualifications – the Postgraduate Diploma in Global Studies, the Master of Global Studies, and a PhD in Global Studies. The postgraduate diploma is ideal if you’re interested in a practice-orientated programme, want to develop a strong transdisciplinary skillset, and do not wish to write a dissertation. The masters enables you to develop a specific focus and take your research expertise further.

The Master of Global Studies also constitutes a pathway to doctoral study. A PhD is possible either in Global Studies or a variety of other subjects, including Development Studies, Geography, Politics and International Relations, Public Policy, and Asian or European area studies. A PhD in Global Studies enables you to undertake completely original research and embark on learning at the highest level.

Research strengths

Our researchers come from a range of specialities, bringing together diverse knowledge and expertise to provide a fresh, interconnected mindset. As a transdisciplinary field, our work spans Arts, Business, Creative Arts and Industries, Law, and Science. We stand at the intersection of global trends and emerging theories. Research areas include:

- Climate change
- Environmental sustainability
- Gender equity
- Geopolitics in the Pacific
- Global business and the global labour market
- Human rights
- Imperialism and transnationalism
- International relations
- Pacific Indigenous knowledges and global challenges
- Tourism and mobilities

We view our students as colleagues and mentees, and your work will be at the forefront of cutting-edge academia. You’ll have opportunities to expand the boundaries of our research, push the definition of what Global Studies is and direct the impact it can make on the world.

Career opportunities

You will develop the practical expertise to enter a variety of sectors addressing global challenges and seeking to build better societies. Through our programmes you will develop creative thinking, innovative problem-solving, and collaboration skills to address real-world stakeholder needs. You will also fashion your course selection and dissertation topic towards a specific field, industry, or career goal.

Career industries for our graduates include:

- Advocacy and mediation
- Business and international trade
- Creative industries
- Foreign affairs and diplomacy
- Environmental sector and science
- Global development
- Local and national government
- Media and journalism
- NGOs and not-for-profits
- Policy analysis
- Think tanks and research institutions



Find out more
auckland.ac.nz/global-studies

Postgraduate programmes	Taught or research	Time to complete (full-time study)	Part-time study ¹
Postgraduate Diploma in Global Studies*	All taught	1 year	✓
Master of Global Studies**	Mixed taught and research	18 months	✓
Doctor of Philosophy (PhD)	All research	3-4 years	✓

* The Postgraduate Diploma in Global Studies is a fully taught, one-year qualification that also constitutes a pathway to the masters degree if you don't have the necessary academic qualifications.

** The Master of Global Studies is a taught masters, with a combination of taught courses (core and elective) and your own independent dissertation. It is designed for graduates who have completed a Bachelor of Global Studies, or a Bachelor of Arts or Bachelor of Science in a relevant major.



“I love to learn and didn’t feel quite done with my learning journey after finishing my undergraduate programme.”

“I loved studying political science and sociology in my undergraduate years but wanted to delve deeper into aspects of my bachelors programme – specifically human rights and indigenous rights – and this is what led me to study the Masters of Global Studies programme at the University of Auckland.

“I chose to study here as I had always had my eye on Global Studies and was elated to hear that I was able to do so when the masters programme was announced.

“Studying what you love will ensure motivation and drive the whole way through. I am writing my thesis on a topic very close to my heart and I continue to be so passionate about what I research.

“I am specifically focusing on Indigenous studies within the Global Studies programme. My thesis is called “Not Brown Enough: A Critical Autoethnographic Memoir on the Complexities of the Phenomenon of White Passing in Aotearoa New Zealand and Globally”. It is a study on white-passing indigenous and coloured people both locally and globally and the complexities that come with cultural acceptance when the colour of your skin does not match your ethnicity.

“At postgraduate level, study is much more self-led, and it is up to you what you study, your schedule and who you work with. I loved how small my classes were; it allowed for incredible discussion with both professors and students, opened my eyes to a heap of different perspectives, and widened the scope of my knowledge.

“There is also more depth to the research, and I love how I was able to cover a vast number of subjects and topics throughout my research journey. The work is incredibly rewarding.

“During my programme, there was so much support; my supervisors were always open to meeting and helping me, and I attended a lot of Faculty of Arts events.

“I am currently working in politics, and I would love to carry on this political journey while in New Zealand. In a few years’ time I plan to move overseas to pursue work in the Human Rights sector.”

Maddy Holland

Nga Puhi

Graduate: Master of Global Studies

“I really value the freedom I have in directing and shaping my research. Another highlight is the support and insight I receive from my supervisors. This combination of strong support and the liberty of self-direction makes the doctoral programme a very enriching experience.”

“I joined the University of Auckland in 2020 to pursue a Master of Laws specialising in Human Rights Law. I was really interested in how the taught masters was structured at UoA. The focus on teaching, combined with a significant research component, was an ideal LLM format for me.

“I have now completed my masters degree and commenced my doctorate. The faculty’s wealth of knowledge and the University’s investment in research are what compelled me to continue into doctoral studies here. The Law School’s research has a positive societal impact.

“I’ve always been fascinated by how society works and its complex interaction with other variables like gender, culture and religion. This passion has guided me into human rights and family law. My current research centres on forced marriages – how they manifest in people’s lives and how the legal response framework in Aotearoa New Zealand can be strengthened to address the issue.

“Along with a rich academic experience, I’ve met peers from diverse backgrounds, and we’ve shared our stories. Lockdown was challenging, but the student advisors here were very helpful throughout. And it’s always been handy to have a rich library and many other support resources available online.

“Auckland is home to a very diverse population, and the way it embraces all of this diversity is its highlight for me. There are always fests and activities to attend. It’s truly heart-warming to be a part of them. The city also has some very beautiful landscapes to explore, and hiking has become one of my new obsessions!”

Divya Rathore

PhD candidate

Divya was awarded a University of Auckland Doctoral Scholarship in 2021 and the Fowlds Memorial Prize in 2020.



Law

Auckland Law School offers the largest range of postgraduate Law programmes in New Zealand. We are committed to improving access to justice through excellence in teaching, research, service and engagement.

The University of Auckland Law School is ranked 62nd in the 2023 QS World University Rankings by Subject as the best place to study law in New Zealand. This ranking is based on academic reputation, employer reputation and research impact.

Postgraduate programmes offered by Auckland Law School include a Doctor of Philosophy (PhD), Master of Intellectual Property (MIP), Master of Laws (LLM), Master of Legal Studies (MLS), Master of Taxation Studies (MTaxS), Postgraduate Certificate in IP (PGCertIP) and a Postgraduate Certificate in Law (PGCertLaw).

Our postgraduate programmes can be undertaken by coursework, research or a combination of both. With over 30 taught courses to choose from, you can concentrate your study in particular areas of specialisation. Alternatively, you could study a broad range of legal subjects.

Postgraduate specialisations

Specialisation is optional but you can choose to have your LLM or MLS awarded in one of our six specialisation areas: Corporate and Commercial Law, Environmental Law, Human Rights Law, International Law, Litigation and Dispute Resolution or Public Law.

For more detailed information, see our postgraduate specialisations page.

law.auckland.ac.nz/specialisations

Flexible study

We understand that personal, family and work commitments are important factors when deciding whether to study, so we offer options to fit with your lifestyle:

- Half-semester courses taught weekly for six weeks of the semester in the early evening
- Full-semester courses taught weekly for 12 weeks over the semester in the early evening
- Intensively-taught courses over three to five days (usually incorporating a weekend break, i.e. Weds, Thurs, Fri, Mon, Tue)
- Independent research programmes

Research strengths

Auckland Law School has a strong international reputation for research. We currently have six research centres:

- The Aotearoa New Zealand Centre for Indigenous Peoples and the Law
- The New Zealand Centre for Environmental Law
- The New Zealand Centre for Human Rights Law, Policy and Practice
- The New Zealand Centre for Information and Communications Technology Law
- The New Zealand Centre for Law and Business
- The New Zealand Centre for Legal Theory

Our broad range of research areas include:

- Contract, torts, equity and other areas of private law
- Corporate and commercial law
- Criminal law and justice
- Family and relationships law and policy
- Indigenous peoples and the law
- International and comparative law
- Land and environmental law
- Legal history and theory
- Litigation and dispute resolution
- Public law, including constitutional and administrative law
- Tax and regulations

Career opportunities

A postgraduate qualification from the Auckland Law School will form an important step in your career. Investing in postgraduate study will broaden your academic, research and employment horizons by adding value with specialist skills and knowledge.

Our graduates can be found in the world's best law firms, the judiciary, in non-governmental organisations and many successful companies around the world.



No.1
in New Zealand

62nd
worldwide¹

1. Times Higher Education World University Rankings 2023 and QS World University Rankings 2023

**Largest range
of postgraduate
courses in New
Zealand**

Find out more
auckland.ac.nz/law-pg

Law

Postgraduate programmes	Taught	Research	Time to complete (full-time study)	Part-time study ¹	International students ¹
Postgraduate Certificate in Intellectual Property (PGCertIP)	✓	X	1 semester	✓	✓
Master of Intellectual Property (MIP)	✓	X	1 year	✓	✓
Postgraduate Certificate in Law (PGCertLaw)	✓	X	1 semester	✓	✓
Master of Laws (LLM)	✓	✓	1 year	✓	✓
Master of Legal Studies (MLS)	✓	✓	1 year or 18 months	✓	✓
Master of Taxation Studies (MTaxS)	✓	✓	1 year or 18 months	✓	✓
Doctor of Philosophy (PhD)	X	✓	3–4 years	✓	✓



Points required	Start			More information
	Semester One	Semester Two	1 December ²	
60	✓	✓	✗	auckland.ac.nz/pgcertip
120	✓	✓	✗	auckland.ac.nz/mip
60	✓	✓	✗	auckland.ac.nz/pgcertlaw
120	✗	✓	✓ ²	auckland.ac.nz/llm
120 or 180	✓	✓	✓ ²	auckland.ac.nz/mls
120 or 180	✓	✓	✓ ²	auckland.ac.nz/mtaxs
Thesis ⁵	Begin at any time			lawfellowship.ac.nz

Find notes on pg. 50-51.



Medical and Health Sciences

Are you looking to advance your skills, deepen your knowledge, specialise in a chosen field, or explore a new direction in Health? If yes, there are many postgraduate study options to choose from at Mātauranga Hauora | Faculty of Medical and Health Sciences.

With healthcare professionals in high demand across Aotearoa, it's a great time to advance your education and build a rewarding health career.

Our focus is to lead and advance health across generations. We opened our doors in 1968. Since then, we've been equipping our postgraduate students with the knowledge and skills that are needed to positively influence the health and wellbeing of individuals, whānau and our communities.

We offer 50+ subjects across 30+ programmes, including postgraduate certificates, diplomas, masters, and doctoral qualifications. We span the fields of Medicine, Nursing, Medical Sciences, Pharmacy, Optometry, Population Health and a variety of Science disciplines.

You can choose part-time and online study options; research-focused and taught qualifications; and programmes that support your clinical and non-clinical skill development, as well as your health leadership and management potential.

As a postgraduate student in our faculty, you'll be taught by lecturers and researchers at the top of their fields. You'll learn in world-class training facilities. And you'll make life-long connections with fellow students.

Research strengths

We are considered the largest biomedical research faculty in New Zealand, with a proud history of attracting and growing pre-eminent researchers, talented students and healthy research funding.

We are committed to improve the health of our local, national and global communities through excellence in research. As a postgraduate student you'll learn in a research-rich environment – within a community that generates a significant proportion of the research drive and outputs of the faculty and the wider University.

We host four transdisciplinary University Research Centres, a Centre for Research Excellence and numerous Faculty Research Centres.

University Research Centres

- Centre for Brain Research
- Te Aka Mātauranga Matepukupuku – Centre for Cancer Research
- CCREATE-AGE: Centre for Co-Created Ageing Research
- Te Poutoko Ora a Kiwa – Centre for Pacific and Global Health Centre for Research Excellence (CoRE)
- Pūtahi Manawa – Healthy Hearts Aotearoa New Zealand

Faculty Research Centres

- Auckland Cancer Society Research Centre (ACSRC)
- Centre for Addiction Research (CFAR)
- Centre for Longitudinal Research – He Araki Mua
- Centre for Medical Imaging
- Eisdell Moore Centre
- Manaaki Mānawa – The Centre for Heart Research
- National Institute for Health Innovation (NIHI)
- Aotearoa-New Zealand National Eye Centre (NZ-NEC)
- Surgical and Translational Research Centre (STaR)

Māori and Pacific Postgraduate Support Services

Our Māori and Pacific Admissions Scheme (MAPAS) Postgraduate Support Services are designed to assist our Māori and Pacific students during postgraduate study. Students benefit from a variety of resources, activities, guidance and support to help them succeed within their chosen course of study.

auckland.ac.nz/fmhs/mapas-pg

Career opportunities

Our graduates are highly sought after. They work in a huge variety of roles as part of the country's health workforce and medical research spaces – from clinical care and scientific research to health policy, education and promotion.

Many of our graduates obtain senior roles within hospitals and healthcare centres. Others work internationally in globally competitive research groups and in specialised biotechnology industries. Pharmaceutical and health promotion agencies are also frequent career destinations. For inspiration, read some of our graduate stories.

auckland.ac.nz/fmhs/our-pg-students

Study 100% online

Explore our 100% online postgraduate programmes in Digital Health and Stroke Care.

Postgraduate Diploma in Health Sciences in Digital Health

Do you want to be part of the digital transformation that is revolutionising the healthcare industry? Get the skills and knowledge you need to thrive in the rapidly evolving field of digital health.

auckland.ac.nz/online-pgdiphsc-digital-health

A shorter Postgraduate Certificate in Health Sciences in Digital Health is also available.

auckland.ac.nz/online-pgcerthsc-digital-health

Postgraduate Diploma in Stroke Care

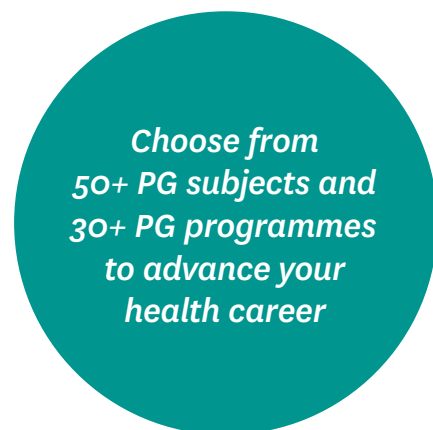
PGDipStrokeCare

Specialise in caring for people with stroke, from pre-hospitalisation care through to rehabilitation, return to the community and research. This diploma is designed for healthcare professionals who want to advance their knowledge in specialised stroke care.

auckland.ac.nz/online-pgdip-stroke-care

A shorter Postgraduate Certificate in Stroke care is also available.

auckland.ac.nz/online-pgcert-stroke-care



Find out more
auckland.ac.nz/fmhs-pg



“The things I have learnt throughout my experience at UoA have changed me as a person.”

“My perspective has developed so much since being here and I’m very grateful for the opportunity to continuously grow, not only academically as a student but also as a person in general.

“Vision 20:20 has created an environment where I feel safe and comfortable. It also offers tutorials, study spaces and other activities outside of mainstream services that have really supported me academically and culturally.

“I grew up in a predominantly white area, so to be given the opportunity to be surrounded by people who look like me and who share similar values is something I am very thankful for. The support I have received from MAPAS, Hikitia Te Ora and Whakapiki Ake staff and peers throughout my time has contributed to me still being here and pursuing a career in health.

“I really like the fact that I am able to specialise in a particular area that I am interested in e.g. clinical quality and safety. I think this gives me the opportunity to be more intentional with my learning, where I can focus on aspects of health that I am interested in and where I hope to be of impact after completing my studies.

“The relationships that I have built throughout my time at UoA have been what has kept me going when times get rough. I think it is important to surround yourself with people who will help you develop both as a person and as a student.”

Alesha Nathan

Ngāpuhi, Kolofo’ou (Tonga)

Graduate: Hikitia Te Ora – Certificate in Health Sciences (CertHSc), Bachelor of Health Sciences (BHSc)

Student: Master of Health Leadership

Vision 20:20 (Whakapiki Ake (Māori recruitment), MAPAS (Māori and Pacific Admission Scheme))

Medical and Health Sciences

Postgraduate programmes	Taught	Research	Time to complete (full-time study)	Part-time study ¹	International students ¹
Bachelor of Biomedical Science (Honours) (BBiomedSc(Hons))	X	✓	1 year	✓	✓
Bachelor of Health Sciences (Honours) (BHSc(Hons))	✓	X	1 year	✓	✓
Bachelor of Medical Science (Honours) (BMedSc(Hons))	X	✓	1 year	X	✓
Bachelor of Nursing (Honours) (BNurs(Hons)) ²⁰	✓	X	1 year	✓	X
Bachelor of Science (Honours) (BSc(Hons)) - Pharmacology/Physiology	✓	X	1 year	✓	✓
Postgraduate Certificate in Clinical Education (PGCertClinEd)	✓	X	1 semester	✓	✓
Postgraduate Certificate in Clinical Pharmacy (PGCertClinPharm) ¹⁷	✓	X	Part-time only	✓	X
Postgraduate Certificate in Health Sciences (PGCertHSc)	✓	X	1 semester ¹⁴	✓	✓
Postgraduate Certificate in Paediatrics (PGCertPaed) ^{16, 20}	✓	X	1 semester	✓	X
Postgraduate Certificate in Stroke Care	✓	X	Part-time only	✓	✓
Postgraduate Diploma in Biomedical Science (PGDipBiomedSc)	✓	X	1 year	✓	✓
Postgraduate Diploma in Clinical Education (PGDipClinEd)	✓	X	1 year	✓	✓
Postgraduate Diploma in Clinical Pharmacy (PGDipClinPharm) ¹⁷	✓	X	Part-time only	✓	X
Postgraduate Diploma in Health Psychology (PGDipHealthPsych) ¹⁹	✓	X	2 years	✓	X
Postgraduate Diploma in Health Sciences (PGDipHSc)	✓	X	1 year ¹⁴	✓	✓
Postgraduate Diploma in Obstetrics and Medical Gynaecology (PGDipObstMedGyn) ¹⁶	✓	X	1 year	✓	X
Postgraduate Diploma in Paediatrics (PGDipPaed) ^{16, 20}	✓	X	1 year	✓	X
Postgraduate Diploma in Public Health (PGDipPH)	✓	X	1 year	✓	✓
Postgraduate Diploma in Science (PGDipSci) – Optometry/Pharmacology/Physiology	✓	X	1 year	✓	✓
Postgraduate Diploma in Stroke Care	✓	X	Part-time only	✓	✓
Master of Audiology (MAud)	X	✓	2 years	X	✓
Master of Biomedical Science (MBiomedSc)	X	✓	1 or 2 years	✓	✓
Master of Clinical Education (MClined)	✓	✓	1 or 2 years	✓	✓
Master of Clinical Pharmacy (MClinPharm) ¹⁷	X	✓	Part-time only	✓	X
Master of Health Leadership (MHLthLd)	✓	X	1 year or 18 months	✓	✓
Master of Health Practice (MHLthPrac)	✓	X	1 year or 18 months	✓	✓
Master of Health Psychology (MHealthPsych)	X	✓	2 years	✓	✓
Master of Health Sciences (MHSc)	✓	✓	1 or 2 years	✓ ¹⁵	✓
Master of Nursing (MNurs) ²⁰	✓	✓	1 or 2 years	✓	X
Master of Nursing Practice (MNursPrac)	✓	X	1 year or 18 months	✓	✓
Master of Nursing Science (MNSc)	✓	X	2 years	X	✓
Master of Paediatrics (MPaed) ^{16, 20}	✓	X	18 months	✓	X
Master of Public Health (MPH)	✓	✓	1 or 2 years	✓	✓
Master of Science (MSc) Optometry/Pharmacology/Physiology	✓	✓	1 or 2 years	✓	✓
Master of Stroke Care	✓	X	Part-time only	✓	✓
Doctor of Health Sciences	First 120 points	Remaining 240 points	Part-time study with full-time option for research component	✓	✓
Doctor of Medicine (MD)	X	Thesis ⁵	3–4 years	✓	✓
Doctor of Philosophy (PhD)	X	Thesis ⁵	3–4 years	✓	✓

Points required	Start			More information
	Semester One	Semester Two	1 December ²	
120	✓	✓	✗	auckland.ac.nz/bbiomedsc-hons
120	✓	✗	✗	auckland.ac.nz/bhsc-hons
120	✓	✗	✗	auckland.ac.nz/bmedsc-hons
120	✓	✗	✗	auckland.ac.nz/bnurs-hons
120	✓	✗	✗	auckland.ac.nz/bsc-hons
60	✓	✓	✗	auckland.ac.nz/pgcertclined
60	✓	✗	✗	auckland.ac.nz/pgcertclinpharm
60	✓	✓	✗	auckland.ac.nz/pgcerthsc
60	✓	✓	✗	auckland.ac.nz/fmhs/pgcert-paeds
60	✓	✓	✗	auckland.ac.nz/online-pgcertstrokecare
120	✓	✓	✗	auckland.ac.nz/pgdipbiomedsc
120	✓	✓	✗	auckland.ac.nz/pgdiplined
120	✓	✗	✗	auckland.ac.nz/pgdiplinpharm
150	✓	✗	✗	auckland.ac.nz/pgdiphealthpsych
120	✓	✓	✗	auckland.ac.nz/pgdiphsc
120	✓	✗	✗	auckland.ac.nz/pgdipobstmedgyn
120	✓	✓	✗	auckland.ac.nz/fmhs/pgdip-paeds
120	✓	✓	✗	auckland.ac.nz/pgdipph
120	✓	✓	✗	auckland.ac.nz/pgdipsci
120	✓	✓	✗	auckland.ac.nz/online-pgdipstrokecare
240	✓	✗	✗	auckland.ac.nz/maud
120 or 240	✓	✓	✓ ²	auckland.ac.nz/mbiomedsc
120 or 240	✓	✓	✓ ²	auckland.ac.nz/mclined
120 or 240	✓	✓	✓ ²	auckland.ac.nz/mclinpharm
120 or 180	✓	✓	✗	auckland.ac.nz/mhlthld
120 or 180	✓	✓	✗	auckland.ac.nz/mhlthprac
240	✓	✗	✗	auckland.ac.nz/mhealthpsych
120 or 240	✓	✓ ⁴	✓ ²	auckland.ac.nz/mhsc
120 or 240	✓	✓	✓ ²	auckland.ac.nz/mnurs
120 or 180	✓	✓	✗	auckland.ac.nz/mnursprac
240	✓ ²³	✗	✗	auckland.ac.nz/mnsc
180	✓	✓	✗	auckland.ac.nz/fmhs/masters-paeds
120 or 240	✓	✓	✓ ²	auckland.ac.nz/mph
120 or 240	✓	✓	✓ ²	auckland.ac.nz/msc
180	✓	✓	✗	auckland.ac.nz/newprogrammes
360 (including 240 point thesis)	✓	✓	✗	auckland.ac.nz/dhsc
360	Begin at any time			auckland.ac.nz/md
360	Begin at any time			auckland.ac.nz/phd

Science

We are New Zealand's largest Science faculty, producing cutting-edge research across ten schools and departments. Students have access to high-quality laboratory and field research facilities, including our recently developed \$200 million Science Centre building. The breadth of our scientific research is diverse, and a variety of outstanding research and tuition-based postgraduate qualifications are available.

Our world is a place of constant change – but Science helps us to adapt to change and complex challenges. Scientific enquiry clarifies key issues and helps us to understand how they interact. The University's contributions to New Zealand's successful Covid-19 response are a great example of this.

We provide a rich research environment for our students that includes strong global collaborations. We have six Science subjects ranked in the World Top 100 and 11 subjects ranked first in New Zealand.*

The faculty also hosts two of the ten national centres of Research Excellence (CoREs), the Maurice Wilkins Centre and Te Pūnaha Matatini.

The Maurice Wilkins Centre for Molecular Biodiscovery is a multidisciplinary network that brings together leading biologists, chemists and computer scientists from around the country to target cancer, metabolic disease and infectious disease.

Te Pūnaha Matatini (the meeting place of many faces) develops methods and tools for transforming complex data into knowledge, tools and insight for better decision making. The centre, which involves nearly 80 investigators, has provided scientific models to inform the government's Covid-19 policy.

*QS World University Rankings By Subject 2022

Research strengths

A swathe of research is underway through a range of platforms, including Joint Graduate Schools and 19 faculty-hosted research centres. A few examples follow.

The Centre for Biodiversity and Biosecurity aims to be a world-leading science-based institution, developing innovative science solutions that will protect and enhance New Zealand's biodiversity.

Ngā Ara Whetū: Centre for Climate, Biodiversity and Society is a flagship cross-faculty research centre that responds to pressing environmental and humanitarian challenges. Co-hosted by the Faculties of Science, Arts, Engineering, and the Business School, Ngā Ara Whetū connects the University's research strength with the knowledge and wisdom of ngā iwi Māori, interested parties, and other collaborators to reduce climate risk, enhance resilient and biodiverse spaces, and create fairer and healthier societies.

Te Pūtahi o Pūtaiao provides a stronghold for Māori-led science scholarship that supports the interests and aspirations of tangata whenua. Our research focuses on integrating decolonising and indigenising methodologies in tertiary science education, fostering the potential of Te Ao Māori and mātauranga in science.

The Centre for Computational Evolution brings together researchers with an interest in developing software tools and mathematical models for understanding evolution and molecular ecology.

The George Mason Centre for the Natural Environment is a multi-disciplinary research centre that focuses on environmental restoration, conservation and sustainability.

The Future Food Research Centre aims to improve food and nutrition security sustainably through education, research, and innovation.

The NAOInstitute researches natural, artificial, and organisational intelligence and its impact on humanity's future.

Te Ao Mārama Centre for Fundamental Inquiry is interested in simple questions that are hard to answer and which transcend traditional disciplinary boundaries, such as what is the origin of life?

Career opportunities

Graduates from our postgraduate programmes are highly sought after in a wide variety of careers. Many go on to become researchers and educators at universities across the world. Others are sought after as subject-matter experts in government, policy, international commerce, or charity work. And some make the leap into consultancy or entrepreneurship. Whether you are seeking to boost your career opportunities or pursue a completely new course in life, the Faculty of Science offers a supportive environment and a range of academically challenging science programmes to help you meet your goals. Read our graduate stories to find out more about our graduates' career paths.

science.auckland.ac.nz/graduate-stories

Study 100% online

Explore our 100% online postgraduate programmes in Applied Psychology and Information Technology.

Graduate Diploma in Applied Psychology

GradDipAppPsych

This is an intensive part-time programme that provides foundational knowledge of psychology to either advance your current career or lead towards postgraduate study.

auckland.ac.nz/online-graddipapppsych

Postgraduate Certificate in Information Technology

PGCertInfoTech

Designed for students with a non IT-related bachelors degree, the Postgraduate Certificate in Information Technology will teach you the specialist skills you need to kick-start your IT career. This programme is also available to study on campus.

auckland.ac.nz/online-pgcertinfotech

Choose
from over 40
postgraduate
subjects to
personalise your
degree

Find out more

auckland.ac.nz/science-pg



“This PhD will allow me to straddle the line between academia and industry, bridging the gap between high-quality research output and industrial application.”

“I’ve always been concerned about the effect we humans have on the environment, especially how we treat highly toxic waste.

“After completing my chemistry degree (BSc Honours) in 2013, I decided to work for a year in industry before starting my PhD. One year in industry quickly became six and I realised that there was a huge gap between the high-quality research output of institutions and the industrial implementation of those ideas.

“Pursuing a PhD has allowed me to progress the fundamental understanding of an emerging sector in chemistry, with the goal to directly inform treatment processes for toxic pollutants.

“My area of research centres around developing a novel and scalable technology, known as high-energy ball milling, to effectively destroy toxic chemicals at a molecular level.

“This method is seen as a green solution for persistent pollutants as no hazardous by-products are generated by the process – and there’s no need for noxious solvents or large energy input. The technology therefore provides a sustainable alternative to current industry practices.”

Kapish Gobindlal

PhD candidate in Chemistry



Hear more from our postgraduate students about their experience at [UoA auckland.ac.nz/pg-stories](https://www.uoa.ac.nz/pg-stories)

Science

Postgraduate programmes	Taught	Research	PhD Pathway	Online	Time to complete (full-time study)	Part-time study ¹
Graduate Diploma in Applied Psychology (GradDipAppPsych)	✓	X	X	✓	Part-time only	✓
Bachelor of Science (Honours) (BSc(Hons))	✓	X	✓	X	1 year	✓
Postgraduate Certificate in Data Science	✓	X	X	✓	1 semester	✓
Postgraduate Certificate in Information Technology (PGCertInfoTech)	✓	X	X	✓	1 semester	✓
Postgraduate Diploma in Applied Psychology (PGDipAppPsych) ⁸	✓	X	X	X	1 year	X
Postgraduate Diploma in Forensic Science (PGDipForensic)	✓	X	X	X	1 year	✓
Postgraduate Diploma in Science (PGDipSci)	✓	X	X	X	1 year	✓
Master of Biotechnology (MBiotech)	✓	X	✓	X	18 months	✓
Master of Chemistry (MChem)	✓	X	✓	X	18 months	✓
Master of Data Science (MDataSci)	✓	X	✓	X	1-2 years	✓
Master of Ecology (MEcol)	✓	X	✓	X	18 months	✓
Master of Environmental Management (MEnvMgt)	✓	X	✓	X	18 months	✓
Master of Environmental Science (MEnvSci)	✓	✓	✓	X	18 months	✓
Master of Food Science (MFoodSci)	✓	X	✓	X	18 months	✓
Master of Information Technology (MInfoTech)	✓	X	X	X	1-2 years	✓
Master of Marine Conservation (MMarineCons)	✓	✓	✓	X	18 months	✓
Master of Marine Studies (MMarineSt)	✓	✓	✓	X	18 months	X
Master of Mathematical Modelling (MMathModelling)	✓	X	✓	X	1 year or 18 months	X
Master of Organisational Psychology (MOrgPsych)	✓	✓	✓	X	18 months	X
Master of Physiotherapy Practice (MPhysioPrac) ⁸	✓	X	✓	X	2 years	X
Master of Science (MSc)	✓ ²⁴	✓	✓	X	1 or 2 years	✓
Master of Speech Language Therapy Practice (MSLTPrac) ⁸	✓	X	✓	X	2 years	X
Master of Wine Science (MWineSci)	✓	X	✓	X	18 months	X
Doctor of Clinical Psychology (DClinPsy) ⁸	✓	X	NA	X	3 years	X
Doctor of Philosophy (PhD)	X	✓	NA	X	3-4 years	✓
Interfaculty degrees and diplomas						
Postgraduate Diploma in Bioscience Enterprise (PGDipBioEnt)	✓	X	X	X	1 year	✓
Postgraduate Diploma in Operations Research and Analytics (PGDipORAn)	✓	X	X	X	1 year	✓
Master of Bioscience Enterprise (MBioEnt)	X	✓	✓	X	1 year	✓
Master of Disaster Management (MDisMgt)	✓	X	✓	X	1 year or 18 months	✓
Master of Engineering Geology (MEngGeol)	X	✓	✓	X	1 year or 18 months	✓
Master of Operations Research and Analytics (MORAn)	✓	✓	✓	X	1 year	✓
Master of Professional Studies (MProfStuds) - Data Science/Digital Security/Mathematics Education	✓	X	✓	X	1 year	✓

International students ¹	Points required	Start			More information
		Semester One	Semester Two	1 December ²	
✓	120	✓	✗	✗	auckland.ac.nz/graddipapppsych
✓	120	✓	✓ ⁴	✗	auckland.ac.nz/bsc-hons
✓	60	✓	✓	✗	auckland.ac.nz/pgcertdatasci
✓	60	✓	✓	✗	auckland.ac.nz/pgcertinfotech
✓	120	✓	✗	✗	auckland.ac.nz/pgdipapppsych
✓	120	✓	✓	✗	auckland.ac.nz/pgdipforensic
✓	120	✓	✓	✗	auckland.ac.nz/pgdipsci
✓	180	✓	✓	✗	auckland.ac.nz/mbiotech
✓	180	✓	✓	✗	auckland.ac.nz/mchem
✓	180 or 240	✓	✓	✗	auckland.ac.nz/mdatasci
✓	180	✓	✓	✗	auckland.ac.nz/mecol
✓	180	✓	✓	✗	auckland.ac.nz/menvmgt
✓	180	✓	✓	✗	auckland.ac.nz/menvsci
✓	180	✓	✗	✗	auckland.ac.nz/mfoodsci
✓	120, 180 or 240	✓	✓	✓ ²⁵	auckland.ac.nz/minfotech
✓	180	✓	✓	✗	auckland.ac.nz/mmmarinecons
✓	180	✓	✓	✗	auckland.ac.nz/mmarnest
✓	120 or 180	✓	✓	✗	auckland.ac.nz/mmathmodelling
✓	180	✓	✗	✗	auckland.ac.nz/morgpsych
✓	240	✓	✗	✗	auckland.ac.nz/mphysioprac
✓	120 or 240	✓	✓	✓	auckland.ac.nz/msc
✓	240	✓	✗	✗	auckland.ac.nz/mstprac
✓	180	✓	✓	✗	auckland.ac.nz/mwinesci
✗	360	✓	✗	✗	auckland.ac.nz/dclinpsy
✓	Thesis ⁵	Begin at any time			science.auckland.ac.nz/phd
✓	120	✓	✓ ⁷	✗	auckland.ac.nz/pgdipbioent
✓	120	✓	✓	✗	auckland.ac.nz/pgdipor
✓	120	✓	✗	✓	auckland.ac.nz/mbioent
✓	120 or 180	✓	✓	✗	auckland.ac.nz/mdismgt
✓	120 or 180	✓ ^{2,4}	✓	✗	auckland.ac.nz/menggeol
✓	120	✓	✓	✓ ²	auckland.ac.nz/mor
✓	120	✓	✓	✓ ²	science.auckland.ac.nz/data-science science.auckland.ac.nz/digital-security science.auckland.ac.nz/math-education

“The opportunities here are vast, particularly at the Auckland Bioengineering Institute. It really is the best place in New Zealand to cut your teeth in the bioengineering space.”

“When I heard about this project it was a no-brainer. Women in engineering, as well as women’s health research, are both typically underrepresented for a number of reasons. We need more women in this space to advance research for women.

“As a female engineer who is researching women’s health, I can be part of the change to make a difference and get better health outcomes for women.

“When you realise you can make such a difference to someone’s life, it really propels you to do better and keep persisting on the long pathway for medical device approval and commercialisation. That is the long term goal: to get our technology (femfit®) to women in the community.”

Laura Pedofsky

PhD candidate in Bioengineering

Laura is researching the design and development of an intravaginal medical device (femfit®) for women’s pelvic floor muscle health.

Auckland Bioengineering Institute

The ABI is a world-leading research institute that aims to improve the diagnosis and treatment of a range of medical conditions and improve the lives of people with disabilities or injuries. For the past 20 years, we have been breaking boundaries in bioengineering – our focus on research excellence, clinical application, and entrepreneurship is making a difference to society and to the New Zealand economy.

Our research applies mathematical and engineering sciences to the investigation of biology and human physiology. The ABI aims to improve understanding of physiological processes and the diagnosis and treatment of injury or disease. We have world-class researchers working on projects that include artificial intelligence avatars, implantable devices, and 3D models of human physiology.

The ABI has been working for more than 20 years on laying the groundwork for creating ‘Digital Twins’ of people – including developing sophisticated tools to create digital models of organs, tissues and cells, personalised for each patient. The goal is that medical devices, procedures or drugs can first be tested on these Digital Twins rather than the real patient to find the best outcome. This personalises care and reduces risk.

We’re a melting pot of many disciplines – including biological sciences, computer science, mathematics, physiology and of course engineering. Our academics and students come from over 50 different countries and a wide range of backgrounds. This fosters a creative and collegial environment. Much of our research is already entering the clinical workflow and has seeded a wide range of commercial activities.

The ABI has established many successful spin-out companies over the years, and we support entrepreneurial activities by our PhD students and postdoctoral fellows.

The ABI has many long-standing international collaborations with universities, companies and organisations around the world.

- Internationally-recognised researchers and world-class facilities
- Support to develop commercial opportunities based on our research, such as spin-out companies
- Attendance at national and international conferences to network and expand learning
- A range of financial scholarships and grants available only at Auckland Bioengineering Institute

Career opportunities

Our graduates have been employed in a wide range of sectors both in New Zealand and overseas. There are opportunities for our graduates in professional biomedical engineering roles, data analytics, research and spin-out companies. Our graduates have been employed by leading firms such as Fisher & Paykel Healthcare, Orion Health and Rocket Lab, as well as our own startups Soul Machines, StretchSense, The Insides Company, Alimetry, Formus Labs and PowerOn.

**20 years+
breaking
boundaries in
Bioengineering
2001–2023**

Research strengths

- World leaders in computational modelling of the human body
- Innovative medical devices and instrumentation
- Biomimetics and augmented human technologies
- Engineering for clinical technologies

Find out more
auckland.ac.nz/abi



Liggins Institute

The Liggins Institute is a world-leading research institute at the University of Auckland. We are committed to improving lifelong health through excellent research into mothers, pregnancy and early childhood. Events prior to, during and after pregnancy can influence the types of diseases an infant may develop in later life. The Liggins Institute focuses its research on understanding these mechanisms in order to reduce the risk of disease onset. Our goal is to give every baby a healthy start for a healthy life.

From cellular research to clinical trials, we take a collaborative and transdisciplinary approach to research. This enables us to view health problems from different angles and to explore the therapies and interventions that have the biggest impact on lifelong health. Our students are critical to this – their research helps to identify the factors that contribute to good health and disease. For example, working out the best nutrition for preterm babies or investigating the role our genes play in the development of diseases like diabetes and obesity. Join us and you will contribute both to health knowledge and the delivery of healthcare that informs the best possible outcomes for the people of Aotearoa New Zealand and the wider world.

Research strengths

Determinants of a healthy life

We look at the role of our genes and the way DNA works to understand why and how diseases develop. Currently we're exploring type 1 diabetes, Parkinson's, Huntington's and complex diseases such as obesity.

Healthy mothers, healthy babies

We undertake clinical trials with pregnant women and their newborns to determine treatment and interventions to improve children's growth and development.

Nutrition for lifelong health

Nutrition affects long-term health and our response to disease in different ways. For example, the health of parents at conception can make a difference to their infant's development, and diet at any time of life can impact on gut health and the microbiome.

Research to reality

Our ability to translate research findings into changes in clinical practice dramatically impacts health and wellbeing – whether that is implementing a new treatment, or stopping an intervention that isn't working.

Support and facilities

As a postgraduate student, you will be an integral part of the Liggins family, with the opportunity to contribute to all aspects of the Institute's work. You will have access to support in seeking research funding from public good, commercial and even philanthropic avenues, and the opportunity to disseminate your research widely, including to the public.

Take on research at the Liggins Institute and you will also benefit from our purpose-built facilities. These include a state-of-the-art laboratory and a family-friendly clinical research unit for studies in babies, children and adults. We are also privileged to host three University-wide services or 'platforms': the Human Health Research Services platform, the Ngapouri Research Farm platform and the Analytical Lab platform.

The Liggins Institute has a number of scholarships and awards available for honours, masters and doctoral students. There may even be philanthropic funding available if you don't meet the criteria for a University of Auckland scholarship.

**Turning
research into
reality to make
a difference for
all mothers and
babies**

Find out more
auckland.ac.nz/liggins

“I am investigating why outcomes for babies born with life-threatening heart conditions in New Zealand differ by ethnicity.”

“I am gathering and assessing sets of data relating to these babies and their mothers, as well as interviewing whānau and staff involved in caring for them. The overarching research goal is to improve equity of health outcomes for babies born with serious heart conditions in New Zealand. However, my hope is that the information gathered from my thesis can be applied in a wider setting to inform equitable healthcare policies and systems beyond Aotearoa.”

“The Liggins Institute is a well-established research unit with an impressive track record of high achieving PhD students. It equips me with the tools I need to develop as a student and meet my full potential. I feel confident with the oversight from my lead supervisor, who genuinely cares about my research topic and completely understands the doctoral student journey. The Liggins Institute also has an inclusive, friendly and diverse student culture which I enjoy.”

Dr Simone Watkins

Simone was born in Auckland, and her father is from the village of Mo'ototua in Sāmoa. After completing a Bachelor of Medicine and Bachelor of Surgery at the University of Auckland in 2011 she went on to train and work as a paediatric doctor. Now she's back as a doctoral student at the Liggins Institute. Simone's PhD is funded by a Health Research Council grant.



Auckland Bioengineering Institute

Postgraduate programmes	Taught	Research	Time to complete (full-time study)	Part-time study ¹	International students ¹
Master of Engineering (ME) – Bioengineering	✓	✓	1 year or 18 months	✓	✓
Doctor of Philosophy (PhD)	✗	✓	3–4 years	✓	✓

Liggins Institute

Postgraduate programmes	Taught	Research	Time to complete (full-time study)	Part-time study ¹	International students ¹
Bachelor of Biomedical Science (Honours) BBiomedSc(Hons)	✗	✓	1 year	✓	✓
Bachelor of Health Sciences (Honours) (BHSc(Hons))	✓	✗	1 year	✗	✓
Bachelor of Medical Science (Honours) (BMedSc(Hons))	✗	✓	1 year	✓	✓
Bachelor of Science (Honours) (BSc(Hons))	✓	✓	1 year	✓	✓
Master of Biomedical Science (MBiomedSc)	✗	✓	1 or 2 years	✓	✓
Master of Health Sciences (MHSc)	✗	✓	1 or 2 years	✓ ¹⁵	✓
Master of Science (MSc)	✓	✓	1 or 2 years	✓	✓
Doctor of Medicine (MD)	✗	✓	3–4 years	✓	✓
Doctor of Philosophy (PhD)	✗	✓	3–4 years	✓	✓
Doctor of Health Sciences	First 120 points	Remaining 240 points	Part-time study with full-time option for research component	✓	✓

¹ Part-time study options are generally not available to international students on student visas. International students must be enrolled full-time to meet the requirements of their student visa.

² 1 December start available for 120-point research masters only, subject to supervisor availability.

³ Based on annual tuition fees for full-time study of 120 points except: programmes that require 60 points to complete (the annual tuition fee for 60 points is shown); some one-year programmes offered by the Faculty of Education and Social Work require 150 or 160 points to complete (the annual tuition fee for the points required to complete these programmes is shown). Tuition fees are indicative only and the fees for 2024 will be set at the end of 2023. All students will also pay a student services fee. As an indication, this fee is \$1,005.60 for students undertaking a full-time load of 120 points in 2023. Students taking fewer than 120 points pay proportionately lower fees.

⁴ Semester Two start may not be possible for all subjects/majors/specialisations and only if places are available.

⁵ Upon the recommendation of the Academic Head and approval from the Board of Graduate Studies, a candidate may present a corpus of creative work for assessment with a written thesis, comprising an integrated whole.

⁶ New international PhD students will be accorded domestic status for the purposes of tuition fees, subject to supervisory and residency requirements. A new international PhD student is defined as a foreign student enrolled for the first time in a Doctor of Philosophy programme at a New Zealand university. Note that to be eligible for the domestic fee, you must reside in New Zealand for the duration of your doctoral programme. However, you may undertake research activities overseas during your doctoral programme (for a cumulative total of no more than 12 months).

⁷ Part-time only.

⁸ Professional programme accredited by the relevant professional body.

⁹ Programme starts on 8 December.

¹⁰ Part-time study options are available by negotiation with the programme leader.

¹¹ After completing the initial two years of full-time study a candidate may apply for permission to continue as a part-time student.

Points required	Start			More information
	Semester One	Semester Two	1 December ²	
120 or 180	✓	✓	✓ ²	auckland.ac.nz/me
Thesis ⁵	Begin at any time			auckland.ac.nz/phd

Points required	Start			More information
	Semester One	Semester Two	1 December ²	
120	✓	✓	✗	auckland.ac.nz/bbiomedsc-hons
120	✓	✗	✗	auckland.ac.nz/bhsc-hons
120	✓	✗	✗	auckland.ac.nz/bmedsc-hons
120	✓	✓ ⁴	✗	auckland.ac.nz/bsc-hons
120 or 240	✗	✓	✓	auckland.ac.nz/mbiomedsc
120 or 240	✗	✓ ⁴	✓ ²	auckland.ac.nz/mhsc
120 or 240	✓	✓	✓	auckland.ac.nz/msc
120 per full-time year	Begin at any time			auckland.ac.nz/md
120 per full-time year	Begin at any time			auckland.ac.nz/phd
360 (including 240 point thesis)	✓	✓	✗	auckland.ac.nz/dhsc

¹² This programme will be offered every two years. The next intake will be 2024.

¹³ Research option only available for Food Engineering and Medical Devices and Technologies specialisations.

¹⁴ Full-time study may not be possible for all subjects/majors/specialisations.

¹⁵ Part-time study may not be possible for all subjects/majors/specialisations and only if places are available.

¹⁶ Must be registered with the Medical Council of New Zealand.

¹⁷ Must be registered with the Pharmacy Council of New Zealand.

¹⁸ Semester Two start may be possible subject to prior approval by the Head of Programme.

¹⁹ Must have completed Master of Health Psychology.

²⁰ Must be registered with the Nursing Council of New Zealand.

²¹ Taught option only available for Optometry.

²² This programme has a limited intake each year and is open to New Zealand and Australian citizens and permanent residents only.

²³ Programme starts in early January.

²⁴ Taught option available for a limited range of majors.

²⁵ Late Year Term entry in November is only available for the 240 point programme.

²⁶ Subject to CUAP approval.

*Tuition fees will be charged at the respective rate for the subject.

Getting our international students work ready

Gain practical insights into the local job market, cultivate industry connections, and seize internship opportunities – all while expanding your global network. Postgraduate study at the University of Auckland will empower you with the tools and resources necessary to enhance your career prospects in New Zealand and beyond.

The most diverse university in New Zealand

The University of Auckland, located in one of the most culturally diverse cities in the world, is the only university in New Zealand to rank within the world's top 100 institutions¹. We're home to more than 8,000 international students from more than 100 countries.

Cutting-edge research and innovation

We're New Zealand's leading research university², committed to cutting-edge academia. We foster trans-disciplinary research that significantly impacts the world. We host more research activity in the New Zealand tertiary sector than anyone else. A quarter of all research-active staff and 35 percent of the top A-rated academic researchers in New Zealand come from the University of Auckland.

We're New Zealand's leading university for innovation³ and the most entrepreneurial university in the Asia-Pacific region⁴. We produce inventive and impactful graduates, many of whom have become industry leaders and change-makers. The Business School's Centre for Innovation and Entrepreneurship (CIE) offers free co-curricular learning opportunities for all students; entrepreneurship programmes such as Velocity; and facilities like the award-winning maker and innovation hub, Unleash Space, which is open to all students.

Academic Excellence

A qualification from the University of Auckland allows you to build on your experience and achieve your long-term career goals. Employers often recognise the university's academic rigour and the high standard of education it provides. A degree from a reputable institution like the University of Auckland can enhance your credentials and increase your chances of securing desirable employment opportunities.

Research Opportunities

The University of Auckland offers abundant research opportunities for international students, which can significantly enhance their employability. With its strong focus on research and innovation, the university provides access to state-of-the-art facilities, research centres, and collaborations with industry partners. Postgraduate study at the University of Auckland allows you to contribute to cutting-edge discoveries and advancements in your field, which can be highly attractive to employers seeking candidates with research experience. The university's emphasis on research can position international students as competitive candidates for research-based roles, doctoral studies, or academic positions within New Zealand and globally.

Post-study work visa

Immerse yourself in the vibrant professional landscape of New Zealand, gain invaluable experience, and pave the way for a fulfilling career journey. There are boundless local career opportunities with New Zealand's post-study work visa programme. Depending on the postgrad programme you complete here, you could be eligible for a work visa lasting up to three years. This allows access to the Kiwi job market, empowering you to work in any position across various industries.

www.auckland.ac.nz/post-study-work-visa

Careers programmes for international students

Workplace Insights Programme (WIP)

Workplace Insights is an exciting programme to help international students learn more about the New Zealand workplace. Through interactive workshops, participants develop employability skills and cultural awareness. They can also visit various organisations to observe workplace practices and gain industry-specific knowledge. Networking events enable students to connect with professionals and explore potential job opportunities. WIP aims to enhance international students' understanding of the local workplace environment and improve their employability prospects.

Jobs 101

Job 101 helps international students understand the New Zealand job market and learn how to present as a desirable candidate. You can also learn how to create job opportunities in New Zealand, gain advice on writing CVs and cover letters, and learn about skills and attitudes that employers are looking for here.

Get Kiwi-Ready: Industry insights for a great career start

In this practical career series for international students, experts from various fields and industries share practical advice and helpful tips on getting ready to start your career in New Zealand. There's something for you, whether you are onshore or offshore, just beginning your bachelors degree or have recently submitted your PhD thesis. The Get Kiwi-Ready programme has something to help boost your chances of success in the New Zealand job market.

Career Development and Employability Services CDES support for international students

CDES is a University-wide service. They have many programmes that focus specifically on the needs of international students. CDES also has an International Career Development and Employability Consultant offering specialised services to address your unique career development requirements.

¹ QS World University Rankings 2023.

² Performance-Based Research Fund (PBRF) latest report 2018

³ Asia-Pacific Entrepreneurship and Engagement Excellence Awards in Higher Education 2020

⁴ Reuters Top 75: Asia's Most Innovative Universities rankings, most recent survey 2019



“With my experience here so far, I can see why the University of Auckland is top ranked in New Zealand.”

“I was drawn here because I’d heard about the renowned academic programmes on offer, taught by highly respected academic staff. There’s also a strong alumni network and excellent resources to support your studies.”

“My lecturers are great at explaining complex concepts and topics in ways that are easy to understand. And they’re always available to offer extra help if I need it.”

“The MProfAcctg is an 18-month coursework-based programme, which is pretty fast-paced and keeps me focused. I’m definitely going through a period of great self-development and personal growth on this course, and I’m really enjoying meeting and learning from students from very diverse backgrounds.”

“I hope to settle in Auckland once I graduate. My ambition is to find work as an accountant or similar in the financial and private business sector. I am confident that through this course I will come away with the skills and knowledge I need to achieve my goals.”

Sangvin Chey

Student: Master of Professional Accounting (MProfAcctg)

Sangvin graduated with Bachelor of Arts in Economics from the University of California Davis; and a Master of Law and Diplomacy from Tufts University in Boston.

Alongside his studies, Sangvin is also an undergraduate teaching assistant at the University’s Business School.

“The academic staff at the University were excellent, supportive and practical. I immediately felt like I was a part of a welcoming community.”

“I found the most valuable skills I learnt at the University of Auckland were high-level academic thinking and meticulous research.

“I work in developing neonatal respiratory medical equipment. This involves everything from immersive hospital visits, to conducting usability studies with neonatal nurses, and machining mould tools for prototype injection plastic manufacturing.

“The neonatal intensive care unit can be a very tense and emotional environment. I enjoy seeing the joy on nurses’ faces when the product I have helped design provides them with another tool to deliver better care for premature babies and their families.

“My degree set me up with the skills I need to translate robust qualitative research into product solutions, and the wider professional network to enable those solutions to drive change in healthcare delivery.

“I found the Faculty of Engineering to be quite flexible and encouraging when I told them about my intentions to make my masters dissertation a cross-faculty collaboration.

“This flexibility meant I was able to learn about qualitative research and how to capture the human factors that influence the delivery and distribution of healthcare. That knowledge has made me an infinitely better medical device designer.”

Larissa Michelsen

Graduate: Master of Engineering Studies

Larissa works as a Product Development Engineer for Fisher & Paykel Healthcare.



Funding your studies

We believe in investing in our postgraduate students. That's why we offer postgraduate scholarships, awards and prizes to a total value of over \$40 million each year. It pays to investigate funding possibilities as early as possible, so you know what you may be eligible for and when applications are due.

Guaranteed postgraduate scholarships

The University offers guaranteed scholarships to research students who meet grade point average (GPA) thresholds from their qualifying programme. Our guaranteed postgraduate scholarships are some of the most generous scholarships on offer in New Zealand.

As a high-achieving domestic research student, you could be eligible for:

Guaranteed postgraduate scholarships

University of Auckland Postgraduate Honours/PGDip Scholarship

University of Auckland Māori Postgraduate Scholarship

University of Auckland Pacific Postgraduate Scholarship

University of Auckland Research Masters Scholarship

Scholarships for international students

We have more than NZ\$15 million in scholarships available for international students this year. These include Doctoral Scholarships and a range of faculty and country-specific scholarships. We encourage you to apply for a scholarship at the same time as your application for admission.

auckland.ac.nz/is-scholarships

We also offer a range of scholarships and awards for eligible international students who wish to pursue postgraduate study with us. Find out more online.

auckland.ac.nz/is-scholarships

Other postgraduate scholarships

In addition to guaranteed scholarships, the University offers a range of other postgraduate scholarships, awards and bursaries, including:

Postgraduate scholarships

University of Auckland ASEAN High Achievers Scholarship

University of Auckland International Student Excellence Scholarship

University of Auckland India High Achievers Scholarship

Kupe Leadership Scholarship

The Kate Edger Educational Charitable Trust Awards

Freemasons Postgraduate Scholarships

Various faculty and subject-specific scholarships

Summer Research Scholarships

Summer Research Scholarships are a great way to gain valuable research experience over the summer months, boost your CV and help you think about pursuing postgraduate study.

The scholarships provided a \$6,750 tax-free stipend in 2022/23 and are open to high-achieving domestic and international students. Applications are especially welcomed from international students, Māori students, Pacific students and students from other NZ universities.

summer.ac.nz

Our Scholarships website provides a database of scholarships offered through the University of Auckland, as well as information on external scholarship providers.

Go online for detailed scholarship information, including criteria, closing dates, online applications and application forms.

auckland.ac.nz/scholarships

Doctoral scholarships and support funding

University of Auckland Doctoral Scholarships are a generous postgraduate scholarship, paying fees and providing a stipend (living allowance) for three years of full-time doctoral study, which may be extended by a further six months (on application).

Doctoral scholarships are available for both domestic and international students, with opportunities for doctoral candidates from across all faculties and large scale research institutes. For more information about University of Auckland Doctoral Scholarships, visit: auckland.ac.nz/doctoral-scholarship

Under a New Zealand Government scheme, new international PhD students who reside in New Zealand during their doctoral study will pay the same annual tuition fees as New Zealand students (NZ\$7,659.60 per annum in 2023). Including compulsory health insurance for international students (NZ\$750) and the Student Services fee (NZ\$1,005.60), the total fee in 2023 was NZ\$9,415.20.

auckland.ac.nz/pg-international-tuition-fees

PreSS accounts

If you're a doctoral candidate undertaking supervised research, you're automatically entitled to research support funding through a University PreSS account. PreSS accounts provide at least \$1,200 per annum (discipline dependent) over the four year period of your registration, or until initial submission.

You can use the money for costs such as attending conferences, research-related travel and accommodation, and research consumables.

auckland.ac.nz/press-accounts

Student loans and allowances

Student loans and allowances are administered by StudyLink, a service of the Ministry of Social Development.

New Zealand citizens and permanent residents may be eligible for financial assistance to support them during their studies.

studylink.govt.nz

Phone: 0800 88 99 00

Employment during study

Advanced postgraduate students are often employed as tutors, laboratory demonstrators or teaching assistants for undergraduate courses. Tutoring is a great way to gain valuable professional and teaching experience during your masters or PhD study.

Other opportunities include part-time research assisting, administrative duties or library work. There may be limits on allowable work hours (particularly for scholarship and international students), so you need to check any conditions that may apply. If you are working outside of the University to finance your study, it's important that you discuss your work commitments with your department's postgraduate adviser or your supervisor to ensure you can balance your workload realistically.

“The University acts as a hub fostering the best minds and leaders of the future. To be able to interact with these people has been an immense privilege.”

“Having been inspired by affable neuroscientists throughout my undergraduate Bachelor of Science degree at the University of Auckland, I was curious to find out more about the brain – perhaps our most personal organ.

“On the other hand, I witnessed many peers suffering through depression and anxiety. Current treatments for depression work pretty well, with on average two in three people getting better over a few weeks. However, that still means that of the 280 million suffering from depression globally, one in three would not typically improve using currently accessible treatments.

“Combining my inspired curiosity about the brain, and a desire to help my fellow ‘frolleagues’ (friends/colleagues), I wanted to contribute to the research to better understand the biology of depression and to improve depression treatments.

“I completed a Bachelor of Science (Biomedical Science) and a Postgraduate Diploma which helped establish a solid foundation of current knowledge of the brain and introduced me to a broad range of research areas currently in focus at the University of Auckland.

“I proceeded to complete a Masters which focused on brain imaging techniques including electroencephalography (i.e. electrical signals of the brain) and functional MRI (which measures brain function). This set me up well for my current PhD studies which includes topics of neuroimaging and psychopharmacology.

“University is a great place to meet likeminded people who are passionate about similar topics. I have had the pleasure of working with some of the best researchers, student advocates and teachers; cultivating a thriving atmosphere where we can improve each other’s research, teaching and advocacy skills.”

Joseph Chen

PhD candidate

Joseph is researching the areas of neuroimaging and psychopharmacology.



Student services and support

It's important to feel confident that you have the support you need to succeed. Our extensive range of student services ensure that help is readily available. We can assist you with everything from research skills to career planning.

School of Graduate Studies

The School of Graduate Studies (SGS) is the central service division responsible for managing and enhancing doctoral research programmes at the University of Auckland. SGS facilitates support and services for doctoral candidates and their supervisors across the institution. The division works across the lifecycle of a doctoral programme, from enrolment to completion, and leads strategic initiatives for doctoral students, supervisors and programmes across and beyond the University.

auckland.ac.nz/sgs

Get in touch at doctoraladvice@auckland.ac.nz

The School of Graduate Studies coordinates a range of events and development opportunities for postgraduate research students, from the regular Doctoral Morning Tea and Doctoral Kōrero sessions, to the annual Three Minute Thesis competition and SGS Research Showcase.

auckland.ac.nz/doctoral-opportunities

auckland.ac.nz/3mt

auckland.ac.nz/sgs-showcase

Student Hubs

The Student Hubs are your physical gateway to Waipapa Taumata Rau.

You can visit your local hub for help and advice on any aspect of planning your studies and life at University.

The Student Hub services are available seven days a week at the City, Grafton, and Tai Tonga campuses and six days a week at Tai Tokerau.

auckland.ac.nz/student-hubs

Student IT Hub

The Student IT Hub is your one-stop shop for student IT assistance, offering connectivity, technology, and software solutions throughout your academic journey.

auckland.ac.nz/student-it-hub

Postgraduate Students' Association (PGSA)

The PGSA aims to make postgraduate life more enriching and fulfilling, and is the voice of postgraduate students (alongside AUSA) within the University and the community.

The PGSA hosts social and academic events, produces a newsletter and acts as a representative for postgraduate students on various boards and committees at the University.

Membership is free. It allows you access to the Postgraduate lounge and gets you a discount at Strata café, both of which are situated on Level 4 of the Kate Edger Information Commons.

Go online for membership details.

To learn more about its work, have your say about University issues and receive the latest information about events, you can like the PGSA Facebook page.

facebook.com/pgsa.uoa

Alumni Relations

Everyone who graduates from the University of Auckland becomes part of our community of more than 223,000 alumni in New Zealand and around the world. The Alumni Relations team keeps you connected with your fellow graduates and the University community through virtual and in-person events, volunteering and mentoring programmes, *Ingenio* magazine, newsletters and social media.

There are many benefits and services available to our alumni. Visit the alumni and friends website or email us to find out more.

alumni.auckland.ac.nz

alumni@auckland.ac.nz

Learning support

Libraries and Learning Services

Libraries and Learning Services provide resources, workshops and advice to help you complete your postgraduate study. From our website, you can access a diverse collection of databases, journals and electronic books. Within our libraries, you can access various print, multimedia and microtext materials, including unique manuscripts and archives.

Advisers offer research consultations to help you identify appropriate information sources, create search strategies and help you stay current with research. You can also attend workshops on managing research data, referencing and presenting.

library.auckland.ac.nz/postgraduate

Learning essentials

Postgraduate study at university requires a wide set of academic skills. Our online resources will help you with time management, note-taking and critical thinking. Online resources to support masters research and thesis writing are also available.

learningessentials.auckland.ac.nz

Study space

Libraries and Information Commons (IC) facilities provide more than 4,000 study spaces, many with computers and access to printers, scanners and photocopiers.

In addition to the plentiful general study spaces, there are quiet study and meeting spaces reserved for you in the postgraduate students' commons.

Many faculties, schools and departments also offer dedicated postgraduate workstations or research facilities, such as the Arts Graduate Study Centre in the Faculty of Arts. Check your faculty website for details or request more information from the postgraduate adviser in your department.

South Auckland Campus, Te Papa Ako o Tai Tonga

Our South Auckland Campus, Te Papa Ako o Tai Tonga, is available for use by all University of Auckland students. The facility offers various study spaces and services, including a commons space with a large communal kitchen. The campus also has a large room for quiet study, as well as meeting rooms that can be booked for private study or meetings.

Students can also borrow laptops, use the printing facilities, WiFi and library services. The campus is a quick two-minute walk from both the Manukau bus and train station.

6 Osterley Way, Manukau

Open Monday–Friday, 8am–8pm

Saturday–Sunday, 9am–5pm

Doctoral Support

The University offers a variety of opportunities for candidates to refine the transferable, research and academic skills needed to complete a doctorate, as well as resources to help with building connections, career planning and professional development.

All doctoral candidates are required to attend an induction and complete a development needs analysis with their supervisor.

Māori and Pacific student support

We welcome and support Māori and Pacific participation and achievement in all aspects of University life.

Waipapa Marae on City Campus provides a home away from home for our Māori students and their whānau.

Our Fale Pasifika is the centre of the University's Pacific community. It houses the Centre for Pacific Studies, and provides a space for discussion and support.

The Offices of the Pro Vice-Chancellor Māori and Pro Vice-Chancellor Pacific can provide advice and guidance to help ensure our Māori and Pacific students succeed here.

Our offices also provide financial support through the Mana-Toa fund for Māori and Pacific postgraduate learners throughout the academic year.

auckland.ac.nz/maoristudents
auckland.ac.nz/pacificstudents

Tuākana

All our faculties offer Tuākana, a learning community enhancing the academic success of Māori and Pacific students through academic mentoring, workshops, and pastoral support.

auckland.ac.nz/tuakana

Te Fale Pouāwhina

Te Fale Pouāwhina is dedicated to supporting students academically and culturally. We specialise in academic learning enhancement through workshops, wānanga and consultations. Our work is underpinned by Kaupapa Māori and Pacific principles.

auckland.ac.nz/tfp

Leadership Through Learning

Leadership Through Learning is a 12-week programme supporting undergraduate and postgraduate Māori and Pacific students to develop academic skills and leadership capability. We provide a culturally safe environment that normalises leadership and learning success.

auckland.ac.nz/leadershipthroughlearning

Personal support

The University offers a welcoming and safe environment in which students, staff and guests can succeed, thrive and reach their full potential. We have a range of initiatives, resources and support for students and their whānau.

auckland.ac.nz/equity

Ratonga Hauātanga Tauira | Student Disability Services (SDS)

We provide support for students with a wide range of impairments, both visible and invisible. If you live with an impairment that impacts your studies then contact us for a confidential chat about how we can help you succeed at the University. Check out SDS's webpages for a comprehensive overview of available support.

auckland.ac.nz/disability

Inclusive Learning

If you have a learning difficulty, we can support your academic development and recommend special exam conditions. We may refer you for a learning assessment or to other support services.

auckland.ac.nz/inclusive-learning

Support for Rainbow students

Our dedicated Rainbow Support Worker offers a range of support that fits with your unique identity. Read more online about the Rainbow Student Network, Queerspace, faculty contacts, resources, and funding for legal name changes.

auckland.ac.nz/equity-rainbow

Students from refugee and migrant backgrounds

Find out about support, including our community of interest, scholarships, faculty contacts, and admission pathways.

auckland.ac.nz/refugee

Students from constrained economic backgrounds

We offer a range of special admission programmes, hardship funding and scholarships for students from constrained economic backgrounds.

auckland.ac.nz/equity-lowseb

International student support

The University provides a comprehensive range of support services for international students. We aim to make your life in Auckland as smooth as possible. This includes learning and academic support, English language support and personal support. (See pg. 64.)

international.auckland.ac.nz



Students who are parents

Accommodation

The University offers a limited range of one, two and three-bedroom apartments to postgraduate students with young families. (See pg. 61.)

accommodation.ac.nz

Early Childhood Education Centres

The University Early Childhood Centres help you to juggle childcare and study. All of our centres follow the New Zealand Early Childhood curriculum, *Te Whāriki*.

There are four on-campus early childhood centres providing care for children of our students on the City and Grafton Campuses. Bookings are essential as there can be a waiting list at each centre.

Hineteiwaiwa Kohanga Reo on the grounds of Waipapa Marae at City Campus is a full immersion Kohanga Reo.

auckland.ac.nz/childcarecentres

Parent Space and breastfeeding facilities

University of Auckland Parent Spaces offer facilities for students with children. These include study space, computers, WiFi, and a place for you to relax. Breastfeeding facilities are available on all of our campuses.

auckland.ac.nz/parentingsupport

Go online for more information about bringing babies and children onto campus.

auckland.ac.nz/babies-and-children-on-campus

Health and counselling service

University Health and Counselling (UHCS) offers primary health services across multiple campuses. We have experienced doctors, nurses and counsellors trained to help and support you with a range of medical needs. You can enrol to get assistance with physical health (including sexual health), mental health, immunisations and more.

auckland.ac.nz/studenthealth
auckland.ac.nz/healthandcounselling

Student Wellbeing

Be Well offers a range of tools and information to care for your physical, emotional and spiritual wellbeing so you can thrive during your time at University. The team focuses on proactive and preventative measures that promote health, reduce stress and enhance a sense of community and belonging at the University – particularly through events and trainings led by our Student Wellbeing Ambassadors.

auckland.ac.nz/be-well

Te Papa Manaaki | Campus Care

The team works with students to better understand their concerns and needs, streamlining interactions with campus services, and developing a plan that works in the best interests of each individual. Students are assigned a single case manager or mental health case manager (depending on their particular circumstances). Their case manager remains in contact and guides them through internal and external services that can support their needs. Students can be referred by others or reach out directly to seek advice.

auckland.ac.nz/campus-care

AUSA Advocacy

AUSA Advocacy is a professional service that provides advice to students on a range of academic, administrative and welfare related issues. All students can access this free, confidential service, which is completely independent from the University.

AUSA provide advice about your rights and responsibilities within the University, in a respectful, non-judgmental and timely manner. Their services include advocacy, support, assistance, information and referrals on any issues that may affect your ability to meet your academic goals. AUSA aim to empower you to negotiate University policy and grievance procedures and to develop an environment that maintains the privacy, dignity and respect of all parties.

AUSA Advocacy

Student Support Hub, AUSA House

4 Alfred St, across from the City Campus Library

Open daily 10am–5pm

Email: advocacy@ausa.org.nz

ausa.org.nz





Recreation and entertainment

Cafés, bars and shops

Whether you're lunching with friends or just grabbing a snack to go, there's an outlet or cuisine available on campus to suit your needs. Our wide range of retailers, spaces to eat, and vending machines ensure you don't need to travel far. You'll have time to enjoy the vibrant campus culture.

auckland.ac.nz/foodandretail

If you need to do some shopping, you can pick up supplies on campus. There's a tech store, a pharmacy, a book and stationery store – and the Campus Store, which sells University branded apparel, gifts, and merchandise.

Strata, the postgraduate area on the fourth floor of the Kate Edger Information Commons, features a postgraduate lounge – which is a large, quiet study area – and a licensed café with a balcony overlooking the City Campus. The PGSA hosts a number of postgraduate functions throughout the year on and off-campus.

Doctoral students are welcome to join the Staff Common Room (SCR) Club at Old Government House on the City Campus. Primarily a social club, the SCR operates a café and bar, and organises social functions for its members. Email us to join.

SCRAdmin@auckland.ac.nz

Clubs

There are over 250 student clubs, societies and associations at the University, ranging from cultural to academic, sport to spiritual and many more, including the Postgraduate Students' Association (PGSA). Attend Clubs Expo at the start of the semester to meet current club members and find out more.

auckland.ac.nz/clubs

Sport and recreation

The University has recognised the crucial role that sport and recreation play in the wellbeing and success of our students and staff. In Semester Two of 2024, we will be opening a new Recreation and Wellness Centre, to help maximise students' sporting and fitness opportunities. The new centre will provide greater access to sport and recreation facilities to support a more connected, diverse and balanced student experience.

There is a range of sporting opportunities for students, including: social sports leagues; interfaculty and inter-residential tournaments; sports clubs to join; academic and performance support for eligible performance athletes; and the opportunity to represent the University at the National Tertiary Championships. Sailing and other marine sports are run from the University's Hyundai Marine Sports Centre. Our new Esports Arena provides an innovative space for community, competition and educational experiences.

If you're looking to keep fit and active, you can find our University Recreation Centre at 70 Stanley Street. Our membership fees cover access to a range of cardio and strength equipment – and multiple studios where we run group exercise classes and small group programmes both in person and online. The Sports Centre, located at 7 Wynyard Street, provides drop-in sessions for members to take advantage of our indoor courts, with equipment available for rental.

auckland.ac.nz/sportandrec

Music and culture

You can often enjoy free musical events across campus. 95bFM broadcasts from the City Campus, providing news, views, music, gig guides and an accommodation guide. Visit our website to live stream or volunteer.

95bfm.com

Visit the Gus Fisher Gallery to see work by established New Zealand and international artists or try the George Fraser Gallery for a taste of the talent at Elam School of Fine Arts.

Drama students frequently present productions in our Drama Studio.

Details of music concerts, dance performances and art exhibitions produced by the Faculty of Creative Arts and Industries can be found online. Sign up to receive regular updates.

creative.auckland.ac.nz

What's On is your online hub for all activities and events at the University. Read your weekly What's On newsletter or like the What's On Facebook page to keep up-to-date with what's happening on campus.

auckland.ac.nz/whatson
facebook.com/uoawhatson



Find out more
auckland.ac.nz/studentsupport

Finding accommodation

As a postgraduate student, you need a living environment that allows you to focus on your studies, while enjoying all the social and recreational opportunities that the University and city of Auckland have to offer.

University-managed Accommodation

Furnished, self-catered options

All our residences offer the opportunity to meet and make new friends with other students from New Zealand and around the world. In residences that accommodate both postgraduate and undergraduate students, postgraduate students are housed close together so that they can form their own community.

55 Symonds

55 Symonds offers modern, air-conditioned studio deluxe and studio deluxe double apartments that are suitable for both singles and couples. As well as the amenities offered in your studio, shared facilities include a large communal kitchen and dining area opening onto a spacious courtyard with BBQ, TV room, lounge and additional study areas.

Carlaw Park Student Village

Located in Parnell, Carlaw Park is only a ten minute walk from the City Campus. We accommodate over 1600 students in two-to-six-bedroom apartments spread throughout eight buildings. The two-bedroom apartments are exclusively designated for students with young families. Each building has direct access to shared common areas, including a large study room, games room, large outdoor area and laundry facilities.

Te Tirohanga o te Tōangaroa

Located at 128 Anzac Ave, just a five-minute walk from the University General Library on the City Campus, Te Tirohanga opened in 2020 and features modern amenities: 488 single rooms, with communal kitchen, dining, study, lounge and games areas, as well as music and movie rooms and access to a rooftop deck with a BBQ.

Waikohanga House

Located at 44 Symonds Street, just a two-minute walk from the City Campus, this beautifully refurbished building is the University's newest accommodation for couples and families. Waikohanga House offers fully-furnished one, two and three bedroom apartments. Residents have access to on-site laundry and printing facilities.

How to apply

You can apply online for a place in a University-managed residence for 2024 from 1 August 2024.

accommodation.ac.nz

Contact Accommodation Solutions

Come and see us at our office, call or email us for assistance.

Office 291A
Level 2
Kate Edger Information Commons
City Campus, Auckland

Phone: +64 9 373 7599 ext 87691
0800 864467/0800 UNIHOST

Email: accom@auckland.ac.nz

Accommodation for couples and families

We provide a range of accommodation for couples and families. Demand is high for this accommodation and availability is limited, especially if you are applying outside of Semester One. If you are applying in Semester Two or between February and November, we recommend you contact our Accommodation team for assistance in finding accommodation that best fits your needs.





University-managed Accommodation fees

	Single	Couple	Family	Mobility	Age	Room type	Bathroom	Self-catering	Recreation	Mins to campus	Weekly rate
Carlaw Park Student Village	✓	✗	✓	✓	18+	Single (Carlaw Park - Nicholls)	Shared	✓	Basketball, volleyball, BBQ, games room, lounge, study room	10	\$310 (Nicholls) ¹
					PG	Two bedroom (family)	Private				\$600 ²
					18+	Single (Carlaw Park - Stuart McCutcheon House)	Shared				\$355 (SMH) ¹
Te Tirohanga o te Tōangaroa	✓	✗	✗	✓	18+	Single	Shared	✓	Study rooms, television lounge, movie and music rooms, games room equipped with a pool table, rooftop deck with BBQ	5	\$320 ¹ \$310 ²
55 Symonds	✓	✓	✗	✓	18+	Studio deluxe Studio deluxe double	Private Private	✓	BBQ, games room, lounge, study room, TV room	8	\$450 ¹ \$480 ¹
Waikohanga House	✗	✓	✓	✓	PG	One bedroom apartment Two bedroom apartment (family) Three bedroom apartment (family)	Private Private Private	✓	BBQ and common room	5	\$500 ² \$600 ² \$700 ²

¹ Fees are based on the weekly rates for a 42-week period in 2024.

² Fees are based on the weekly rates for a 52-week period in 2024.
PG = postgraduates.

Arriving from overseas

The University of Auckland warmly welcomes students from all over the world. We offer you a wonderful opportunity to gain an internationally recognised qualification in a stimulating environment. Our diverse student population includes international students from more than 100 countries, so you'll be part of a genuinely global academic community.

Why study in New Zealand?

- As a safe and politically stable country with a high standard of living, New Zealand is an ideal place to enjoy your postgraduate study.
- New Zealand enjoys a global reputation for technical innovation supported by its world-class education system and reputation for research excellence.
- Education in New Zealand is not just about imparting knowledge, but also about generating new ideas and fostering independent thinking.
- Studying at the University of Auckland, New Zealand's leading university,* will equip you for the global marketplace with an internationally recognised qualification.

*worldranked.ac.nz

Domestic fees for PhDs

Under a New Zealand Government scheme, new international PhD students who reside in New Zealand during their doctoral study will pay the same annual tuition fees as New Zealand students. For recent fees, see Doctoral support funding, pg. 55.

Benefits of studying for a PhD in New Zealand

- As a PhD candidate you have open work rights under the terms of your student visa.
- On completion of your PhD, you can apply for a Post-Study Work Visa for up to three years, which allows you to work for any employer in New Zealand.
- Your spouse or partner can apply for a work visa valid for the duration of your PhD programme.
- Your dependent children can attend New Zealand's primary and secondary schools at the same subsidised rate as New Zealand children.

immigration.govt.nz

Support for international students

As an international postgraduate student, you will benefit from the same extensive support services that the University of Auckland offers to all its students. There are also specialist international student support services to help you adjust to life in New Zealand and enjoy your studies with us.

International Orientation

The International Office arranges an Orientation programme at the beginning of Semesters One and Two for new international students. It is designed to give you comprehensive information you need about the University and living in Auckland. In addition, the University hosts a number of social, sporting and cultural activities that provide great opportunities to make new friends. The Business School also provides an Orientation for its coursework masters students in Quarters Two and Four.

When you arrive, you can sign up for a Uniguide – a current student who can answer your questions and help you find your way around campus during your first few weeks.

auckland.ac.nz/is-orientation

Pastoral care for international students

Our International Student Support team recognises the pressures that students face when studying overseas. They are happy to assist you with any non-academic questions you may have, or challenges you may face, during your time at the University of Auckland.

auckland.ac.nz/international-student-support

Scholarships

The University of Auckland administers scholarships that are open to international students wishing to pursue postgraduate study.

The International Office also works with external scholarship agencies and government bodies to provide opportunities for international students who meet entry requirements.

See the following table for a selection of available scholarships. View our webpages for the full list.

auckland.ac.nz/is-scholarships

Postgraduate scholarships for international students

University of Auckland International Student Excellence Scholarship
University of Auckland Doctoral Scholarship
University of Auckland Faculty of Engineering Doctoral Scholarship
University of Auckland Transnational Education Partner High Achiever Award
Dean's International Doctoral Scholarship (FMHS)
Faculty of Education and Social Work Postgraduate International Student Scholarship
Faculty of Arts Doctoral Scholarship
Faculty of Arts Sub-doctoral Postgraduate Scholarship
Faculty of Creative Arts and Industries International Student Masters Award
New Zealand Scholarships
University of Auckland ASEAN High Achievers Scholarships
University of Auckland Fulbright Scholarships
Faculty of Education and Social Work Doctoral Fees Bursary
University of Auckland India High Achievers Scholarships
University of Auckland International Business Masters Scholarship
University of Auckland Law School's Dean's Doctoral Scholarship
University of Auckland Senior Health Research Doctoral Scholarship

Go online for more information on scholarships available to international students, including selection criteria, application forms and closing dates.

auckland.ac.nz/is-scholarships

University of Auckland Doctoral Scholarships

Doctoral scholarships are available for both domestic and international students, with opportunities for doctoral candidates in all faculties and large-scale research institutes.

auckland.ac.nz/doctoral-scholarship

English language support

If English is not your first language, you will be required to provide proof of your English-language proficiency to be accepted for postgraduate study. The University provides plenty of support to help you further develop your academic English skills during your studies. Go online for more information.

auckland.ac.nz/pg-english-reqs

DELNA

DELNA (Diagnostic English Language Needs Assessment) is a free service that determines the level of English language support you will need to succeed in your studies.

delna.auckland.ac.nz

English Language Enrichment (ELE)

English Language Enrichment (ELE) provides opportunities to develop your academic communication skills through in-person and online workshops as well as individual consultations. You can join language learning groups, participate in Writing in English workshops, meet individually with a language adviser and find language exchange partners.

You can also access language learning materials and tools to help improve your academic English through ELE Online.

library.auckland.ac.nz/ele

Working while you study

If you are enrolled as a full-time student at the University of Auckland, you may be eligible to work during your programme of study.

Go online for up-to-date information on your work rights while on a student visa in New Zealand.

immigration.govt.nz/study

Before you arrive in New Zealand

Immigration

You must apply for a student visa to cover the period you intend to study in New Zealand. You must show evidence that you have been accepted into a programme, have paid your tuition fees and have sufficient funds to cover your costs while in New Zealand. You must apply for your visa before entering New Zealand.

Full details on rights to employment in New Zealand while studying, and how to apply for your visa, are available online.

immigration.govt.nz/study

For help with your application, assistance with visas and insurance, or for more information about life and study in New Zealand, contact:

International Office

Website: international.auckland.ac.nz

Questions: auckland.ac.nz/student-hubs

Email: studentinfo@auckland.ac.nz

Postal address:

The University of Auckland
Private Bag 92019
Auckland 1142
New Zealand

Street and courier address:

Alfred Nathan House
24 Princes St
Auckland 1010
New Zealand

International students

bring perspectives to our campuses from over 100 countries.





“I am fortunate that my years at the University of Auckland have provided me with opportunities and experiences that I will carry with me for life.”

“My postgraduate interests came about in my third year of undergraduate study, helped greatly by having enthusiastic lecturers. I think some of their energy rubbed off on me.

“The people I encountered and the opportunities that came out of that are the main highlights from my time studying. Meeting people and learning about their interests enriched my time at university.

“I am a research librarian specialising in Māori subject matter. My interests span history, to arts and crafts, to whakapapa research. I help people with reference enquiries in these areas, as well as undertake my own research.

“The ability to get on with people from various backgrounds has been valuable and has carried me on to my current job. Research work, collecting and analysing information, and looking at different perspectives are also skills that I have developed and am still developing.”

Xavier Forsman

Te Rarawa

Graduate: Master of Science

Xavier was a recipient of the School of Environment Māori Masters Thesis Scholarship.

He works as a Poukokiri Rangahau Māori (Senior Librarian, Māori Research) at Auckland Council.



Hear more from our postgraduate students about their experience at UoA
auckland.ac.nz/pg-stories

How to apply

Honours, postgraduate certificate, postgraduate diploma and masters programmes

Before you apply

- Check the entry (auckland.ac.nz/pg-entry-requirements) and English-language (auckland.ac.nz/pg-english-reqs) requirements for your programme.
- Check the application closing date online. We recommend you apply as early as possible. You don't need to wait to meet the requirements before applying – as long as you meet them before the programme begins.

Ready to apply?

New to the University of Auckland or a former student?

1. Apply for admission online:
applytostudy.auckland.ac.nz



Current student?

1. Make an Add/Change programme request online:
applytostudy.auckland.ac.nz



2. You will receive an acknowledgement email listing the supporting documents we require, and a Student ID number for logging on to your Application for Admission. You can check your application status online and see what supporting documents you will need to provide. Your application will be assessed once we receive sufficient information (such as uploaded transcripts, other academic results, references or a portfolio) or once you have attended an interview.



2. We will assess your application and inform you of the outcome via email. The status will show on the 'Your applications' section of the Application for Admission.



3. Accept (or decline) your offer online at applytostudy.auckland.ac.nz. If you have a conditional offer, you should accept your offer straight away. There is no need to wait to meet the conditions before accepting your offer. We encourage you to submit the required information to meet the conditions as soon as you can.*



4. Enrol in your courses. See auckland.ac.nz/pgenrolment

Applying for a Graduate School of Management programme

For information on how to apply to a Graduate School of Management programme, visit gsm.auckland.ac.nz

Need help applying?

Find answers to frequently asked questions:

auckland.ac.nz/student-hubs

Email: studentinfo@auckland.ac.nz

*Conditional offers

Conditional offers are made when your place in a programme is subject to one or more conditions. For example, you may need to supply final results or complete a prerequisite course.

When you receive a conditional offer:

1. Accept (or decline) the offer.
2. Meet the conditions.
3. Submit evidence that you have met the conditions.

PhD or named doctorate

Before you apply

- Read the academic entry requirements: auckland.ac.nz/doctoralentry
- Decide on, and clarify as much as possible, your potential research topic or area of research. Check that we have active research in your preferred research area by exploring Discovery Profiles: profiles.auckland.ac.nz.
- Check the English-language requirements for your programme: auckland.ac.nz/pg-english-reqs
- If you are applying for the Doctor of Clinical Psychology or Doctor of Education, please check the application closing date. Applications for all other doctoral programmes may be submitted at any time of the year.
- Have electronic copies of the following ready:
 - Relevant academic transcripts
 - Statement of Research Intent
 - Academic CV or résumé
 - Evidence of research activity (including a thesis or dissertation)
- Arrange for two referees to support your doctoral application. Doctoral referee reports must be submitted directly from your referees.

You can download a Statement of Research Intent form, a Doctoral Referee Report form, and follow our step-by-step guide for doctoral applications, admissions and enrolment at auckland.ac.nz/applydoctorate

Ready to apply?

1. Apply for admission online: apply.auckland.ac.nz



2. You will receive an acknowledgement email with your Application for Admission login details. You can use these details to keep track of your application status. You can also check online to see if you need to supply any additional supporting documents. Assessment of your doctoral application can take eight weeks or longer.



3. When a decision is made, the status will show on the 'Your applications' section of your Application for Admission and we will inform you of the outcome via email.



4. Accept (or decline) the offer online.



5. When you accept an offer of place, you are admitted to your programme. We will acknowledge your acceptance by email with information on how to enrol. Domestic applicants have 3 months to enrol; international applicants have 6 months to enrol.

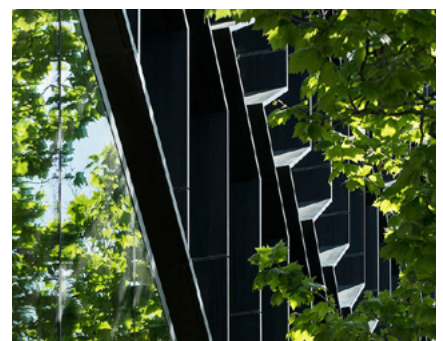
International applicants

Follow the guidelines above.

Read the entry requirements for non-doctoral programmes for international applications: auckland.ac.nz/pg-entry-requirements

We recommend you apply as early as possible to allow sufficient time to apply for visas.

We have a number of official agents and overseas representatives who can help you with the application process in person: see auckland.ac.nz/findanagent





**UNIVERSITY OF
AUCKLAND**
Waipapa Taumata Rau
NEW ZEALAND

Get in touch, or visit us at your local

Student Hub:

studentinfo@auckland.ac.nz
auckland.ac.nz/student-hubs

City Campus:

General Library, Building 109,
5 Alfred Street, Auckland

Grafton Campus:

Philson Library, Building 503
Level 1, 85 Park Rd, Grafton
(Entry via the Atrium)

Te Papa Ako o Tai Tonga

South Auckland Campus:

6 Osterley Way, Manukau
Te Papa Ako o Tai Tokerau

Whangārei Campus:

L Block, 13 Alexander Street, Whangārei



postgraduate.ac.nz