



UNIVERSITY OF
AUCKLAND
Waipapa Taumata Rau
NEW ZEALAND

Postgraduate Prospectus 2023

Honours | Postgraduate certificates and diplomas | Masters | Doctorates



No.1

Ranked New Zealand
University¹



No.6

Globally for Sustainable
Development Impact²



No.1

In New Zealand
for Employability³

Nau mai, haere mai

Welcome to the University of Auckland

Postgraduate study at Waipapa Taumata Rau offers the opportunity to fulfil your academic and career potential. Whether you choose one of our taught or research programmes, you can expect to challenge your thinking, learn new skills and position yourself for the next exciting step in your career.

As you pursue advanced study, you could be involved in the discovery and development of innovations that improve our social, cultural, economic and environmental wellbeing.

As well as innovation through research, we offer specialised and innovative degrees that meet the demands of an ever-changing world.

We've also been recognised as world leaders in sustainability with our no. 6 ranking in the Times Higher Education Impact Ratings. These measure how well educational institutions are delivering on the United Nations' Sustainable Development Goals.

Our postgraduate students play an important role in the University's innovation ecosystem and are a valued part of our academic community.

We offer a wide range of support and opportunities for students, including:

- Over 150 taught and research postgraduate programmes
- More than \$40 million in postgraduate scholarships and awards each year
- Extensive pastoral and learning support

The University of Auckland is also placed at number one in New Zealand for Graduate Employability³. When you finish your studies, you'll be equipped for the next step – what that looks like is up to you. Success with us is just the beginning.



DAWN FRESHWATER
Ihorangi | Vice-Chancellor
Waipapa Taumata Rau | University of Auckland

¹ QS World University Rankings 2023
² Times Higher Education University Impact Rankings 2022
³ QS Graduate Employability Rankings 2022

Contents

01 Welcome to the University of Auckland

Welcome to the University of Auckland	2
Prepare for your future of work	5
Take your research to the next level	6
New Zealand's most innovative university	8
Gaining an international qualification	9

02 Postgraduate programmes

Postgraduate programmes	12
Arts	14
Business School	18
Creative Arts and Industries	22
Education and Social Work	26
Engineering	30
Law	34
Medical and Health Sciences	38
Science	42
Auckland Bioengineering Institute	46
Liggins Institute	47

03 Supporting your study

Funding your studies	52
Student services and support	53
Finding accommodation	57
Arriving from overseas	59

04 Applying

How to apply	62
--------------	----





Your passion could become your life's work

with postgraduate study at NZ's leading university.

Apply now

Prepare for your future of work

If you're looking to upskill or take your career to the next level, a postgraduate qualification will set you apart and support your future career goals.

It's in you. Bring it out.

Postgraduate study at the University of Auckland is your chance to transform your world and open the door to a new beginning. We offer a diverse range of taught and research programmes to choose from, whether you're looking to pursue your passion, advance your career or make the switch to a new one.

Postgraduate study isn't just about gaining a qualification. We believe that learning is a lifelong journey that can continue to broaden your horizons and help you grow into the person you want to be. Whatever field you choose to study in, continuing your education is a way to stay relevant and fulfilled in a constantly shifting and unpredictable world.

Accelerate your career

If you want to take your career to the next level and bridge the gap between where you are in your work life and where you want to be, we can help you get there.

A qualification from the University of Auckland gives you the opportunity to build on your experience and achieve your long-term career goals. You'll be able to position yourself for the next step in your career by developing your skills and learning from some of the best teachers in the country.

Advanced study also offers networking and leadership opportunities, as well as the chance to surround yourself with like-minded people who share the same desire to learn new skills.

Returning to study

It's never too late to go back to university. Further study gives you the opportunity to achieve your academic goals and prepare for your next career move. Whether you choose one of our taught or research programmes, you can expect to build your confidence and challenge your thinking.

Learn new skills

To augment and enhance the skills and knowledge you receive as a postgraduate student, the University offers a variety of courses to develop academic and professional skills, and to help with career planning and professional development.

Career Development and Employability Services (CDES)

The CDES team supports postgraduate students to identify where they want to take their qualification and develop an employability action plan to build experience (and confidence) alongside their studies.

Their in-person and virtual support is available from day one, right up to three years after graduation! They bring employers on campus to connect with students in person and offer a range of interactive workshops, from finding your career direction to job search, interview skills and LinkedIn.

You can access all of their services including exclusive online modules, job board, self-service CV and cover letter checks, plus register for appointments and events via their online career platform MyCDES+.

cdes.auckland.ac.nz

Doctoral Development Framework

Career advancement comes from careful planning. The Doctoral Development Framework helps candidates plan their development holistically for success within their doctoral programme and beyond.

auckland.ac.nz/ddf

Academic Career Advancement Programme

The Academic Career Advancement Programme (ACAP) prepares mid-phase doctoral candidates for a career in academia. This competitive programme is funded by the Academic Career Advancement Award and hosted by the School of Graduate Studies.

auckland.ac.nz/acap

Doctoral Entrepreneurial Leadership Programme

The Doctoral Entrepreneurial Leadership programme is a free year-long programme, designed to develop doctoral candidates' entrepreneurial mindset and skills. Run by the Centre for Innovation and Entrepreneurship, the programme is relevant to candidates from all disciplines.

Take your research to the next level

Postgraduate research is a cornerstone of the University of Auckland. We offer a wealth of opportunities for you to undertake research as a postgraduate student: from small projects to in-depth doctoral theses.

\$40 million
worth of postgraduate
scholarships and
awards are on offer
each year.

Leading researchers

The University has more internationally and nationally esteemed researchers than any other tertiary institution in New Zealand. This means you could be working alongside internationally respected researchers on a project of global significance, whilst building your international networks and a reputation of excellence.

Be part of our research community

As a postgraduate researcher at the University of Auckland, you will be part of a community of like-minded postgraduate scholars that has the largest number of research degree completions in the country.

Renowned research-led University

The University of Auckland is New Zealand's leading research-led university, due to its quality and quantity of researchers, breadth of disciplines and significant research impact. The University supports the work of eight faculties covering a comprehensive range of disciplines, as well as two internationally-renowned Large Scale Research Institutes. The University is also host to four Centres of Research Excellence (CoREs), partner on another four, and hosts two National Science Challenges and is a partner on another eight.

Find a supervisor

Discover the expansive research going on throughout our faculties and find a supervisor to match your area of research focus. Using our online database, Discovery Profiles, you can find information about our research experts, and explore their current supervision opportunities.

auckland.ac.nz/findasupervisor



New Zealand's most innovative university

From innovation workshops and challenges to support starting a spin-out company, the University has a strong innovation culture, where every student has the opportunity to develop and pursue their entrepreneurial potential.

The University of Auckland is ranked in the top 3% of universities in the world for innovation¹. We are committed to developing entrepreneurial-minded students and graduates in an innovative environment.

- Many of our academics and postgraduate students are involved in research that has the potential to benefit our society and economy.
- We offer extensive support to students and staff to develop their research for commercialisation or application in the creation of social ventures.
- We provide opportunities and activities to develop your innovation and entrepreneurship skills.
- We have opportunities to network with like-minded students and academics in an environment where collaborations have led to start-ups and spin-out companies.
- We offer postgraduate programmes in innovation and entrepreneurship designed to broaden career possibilities.

Velocity

Velocity is the University of Auckland's globally renowned entrepreneurship programme. It is student-led, supported by the Centre for Innovation and Entrepreneurship, and runs year-round seminars, workshops and challenges.

Velocity's 100k challenge encourages those with a business or social enterprise to test its potential. Shortlisted entrants win a place in the Velocity Launch Pad Programme, where they receive mentoring and workshops. Finalists compete in the \$100k Velocity Grand Final for seed-capital and support in growing their venture. Velocity has launched more than 168 ventures and participants have attracted more than \$945 million in investment.

velocity.auckland.ac.nz

Innovation Hubs

The Business School's Centre for Innovation and Entrepreneurship (CIE) offers support for all students and staff, no matter what you are studying, at one of two locations:

Unleash Space

Unleash Space is the University's state-of-the-art innovation hub with a dedicated maker space. It offers workshops, equipment and seminars to inspire, motivate and help you develop your entrepreneurial capability.

Create what you can imagine, design for today and prototype for tomorrow. The space houses 3D printers, laser cutters, routers, electronics, vacuum formers, vinyl cutters, sewing machines, craft and art supplies, and other tools and machinery.

Technology Hub

The University's brand new Technology Hub is located in Level 1 of the Owen G Glenn Building, with extra-curricular learning opportunities available to all students and staff of the University of Auckland. Experiment with 5G, VR, IoT and more.

cie.auckland.ac.nz

Commercialise your research

The University offers a range of opportunities for postgraduate students to explore the potential to commercialise their research.

UniServices, the research commercialisation and knowledge mobilisation company of the University of Auckland, offers commercialisation workshops that:

- Introduce you to the concepts of entrepreneurship, intellectual property and commercialisation.
- Equip you with the tools and skills needed to attract investment.
- Help you develop networks and prepare for a career in R&D.

IP Protection and commercial development

UniServices champions research and ideas with the power to change the world. From seeking out and bringing together partners in academic institutions, industry and government to build new research-based knowledge and solutions through to whakatupu (nurturing)

and commercialising the ideas and intellectual property that arise from the University of Auckland's great minds, we act as the kaihono (those who join and link people to people and people to projects), firmly entrenched in the ecosystem that bridges the world of academia with business, government and our communities uniservices.co.nz

Funding and investment

- The University of Auckland Inventors' Fund, managed by UniServices, is a \$20 million pre-seed and seed investment fund that is accessible to University researchers and students. The fund supports the commercialisation of ideas and inventions, enabling researchers to transform their research into businesses and new products.
- Return On Science and its student-led sister programme, Momentum, operate several national-level investment committees where founders and inventors can get expert advice and potentially funding for their ventures.

returnonscience.co.nz

Innovation programmes

The Business School offers a Master of Business Development and a Postgraduate Certificate in Business Development, both focused on innovation and product management. This unique programme is designed for innovators, researchers and working professionals.

auckland.ac.nz/online-mbusdev

1. Times Higher Education University Impact Rankings on SDG9 Industry, Innovation and Infrastructure.

Gaining an international qualification

Our partnerships with leading universities around the world open up a range of opportunities for you to interact with your counterparts, including joint research projects with partner universities, international networking, exchanges, conferences and workshops.

Take advantage of our international partnerships and programmes

The University of Auckland is ranked 17th= in the world in the 2022 Times Higher Education's most international universities, reflecting our international outlook. We develop key international relationships that enhance our ability to perform as a globally competitive research-led University. Our formal engagement in 40+ countries includes organisations and institutions across industry, government, philanthropy, alumni and higher education.

auckland.ac.nz/globalpartners

360 International

360 International creates opportunities for you to study overseas as part of your University of Auckland degree, through our short-term and exchange programmes. Taught postgraduate study may be undertaken on exchange for one semester of a 180 or 240 point programme, with host universities located in more than 30 countries. You must discuss feasibility and timing with your faculty and plan to apply for exchange concurrently when applying for your postgraduate programme of study.

360 International also offers a range of fully-funded virtual opportunities to University of Auckland students to expand your international horizons. These opportunities are a great way for you to gain new global connections and quickly advance your academic, professional, and personal development. The types of virtual programmes we offer include leadership, skills development, cultural programmes, internships and short courses.

auckland.ac.nz/360

Association of Pacific Rim Universities (APRU)

As a network of leading universities linking the Americas, Asia and Australasia, the Association of Pacific Rim Universities (APRU) is the Voice of Knowledge and Innovation for the Asia-Pacific region. APRU brings together thought leaders, researchers, and policy-makers to exchange ideas and collaborate on effective solutions to the challenges of the 21st century.

APRU leverages collective education and research capabilities of its members into the international public policy process. Primary research areas include natural hazards & disaster risk reduction, women in leadership, population aging, global health, sustainable cities, artificial intelligence and the future of work, the Pacific Ocean, and labour mobility.

A number of opportunities exist for students, including participation in APRU research conferences and research symposia.

Universitas 21 (U21)

Universitas 21 (U21) empowers students and staff from 28 world-class universities to share excellence, collaborate across borders and nurture international knowledge exchange. U21 values cultural difference, connecting together perspectives from around the world, and harnesses the collective expertise of its exceptional institutions to benefit all of its members.

The U21 Graduate Collaborative Research Awards provide students with the opportunity to develop international research projects with partners across the U21 network.

Professional development opportunities are provided through the U21 PwC Innovation Challenge requiring students to consider and respond to real workplace challenges, developing critical thinking, presentation and communication skills.

Worldwide Universities Network (WUN)

The Worldwide Universities Network (WUN) brings together 25 universities across six continents that sit in widely diverse geographical and cultural contexts, and which, in partnership provide an unparalleled richness of talent and resources that are brought to bear on major research problems.

WUN provides opportunities for early-career researchers, including postgraduate and postdoctoral students, to gain experience in international research collaborations.

auckland.ac.nz/internationalnetworks

China Scholarship Council (CSC)

China to New Zealand

Top Chinese PhD students can study at the University of Auckland through a scholarship programme developed in collaboration with the China Scholarship Council (CSC). Students who receive a scholarship are given a living allowance by the Chinese Government for the term of the scholarship, return airfare to New Zealand, student visa fees and the cost of overseas student health cover.

auckland.ac.nz/china-csc

New Zealand to China

The Confucius Institute in Auckland administers the NZ-China Scholarship to put forward recommendations to China's Ministry of Education's China Scholarship Council, for up to 10 scholarships for students to study in a Chinese university for an academic year. These scholarships provide a monthly allowance and also cover tuition fees, teaching materials, accommodation and on-campus medical care.

Not available until further notice due to Covid-19 restrictions.

ci.ac.nz/scholarships/nz-china



Get a taste of postgraduate study

Meet our academics and see what postgraduate life could be like for you.

Three Minute Thesis

Watch our research students take on the challenge of explaining their theses in just three minutes. This fast-paced global competition is an unmissable highlight in the postgraduate calendar, offering participants a unique platform to drive research impact and refine their research communications skills.

auckland.ac.nz/3mt

Research Showcase

Discover the breadth of postgraduate research at the School of Graduate Studies Research Showcase. This annual event is a key opportunity for postgraduates to gain public recognition for their research and to network with peers, academics and industry representatives.

auckland.ac.nz/sgs-showcase

Study 100% online

Explore our online programmes and take the next step in driving your career forward.

Now you can take the next step in your career without ever stepping foot on campus.

Auckland Online brings career advancement and professional development within reach of busy people everywhere. The fully online programmes combine the freedom of digital delivery with the exceptional quality of a

programme or degree from the University of Auckland.

With 100% online course delivery and no on-campus requirements or on-campus block courses, you can study in a way that fully fits your life and location.

online.auckland.ac.nz



“One of my favourite parts of the programme was getting back into the classroom after years away from study.”

“I am the Director of Mission and Special Character at Listen College where I work with the older students in a leadership role going out into the community serving those who are less fortunate.

“My colleagues inspired me to study the Master of Education. I knew by doing this it would better me as a person and as a professional.

“It was great working with other teacher professionals of a similar age and experience who also held leadership positions in their schools. Having discussions around topics that had different approaches and systems to deal with education change was really interesting.

“I had really great lecturers and professors supporting me throughout my studies. They were like aunts to me in terms of always having time for any questions or queries – the door was always open. They allocated time, energy, a listening ear and a compassionate push in the right direction. This made my learning journey really comfortable. Whenever I had a mountain in front of me, it didn't seem so high that I couldn't get over it.

“I would recommend to anyone considering postgraduate study to go for it and take that next step. You will be surrounded by like-minded people who want to better themselves personally and professionally.”

Willie Swann

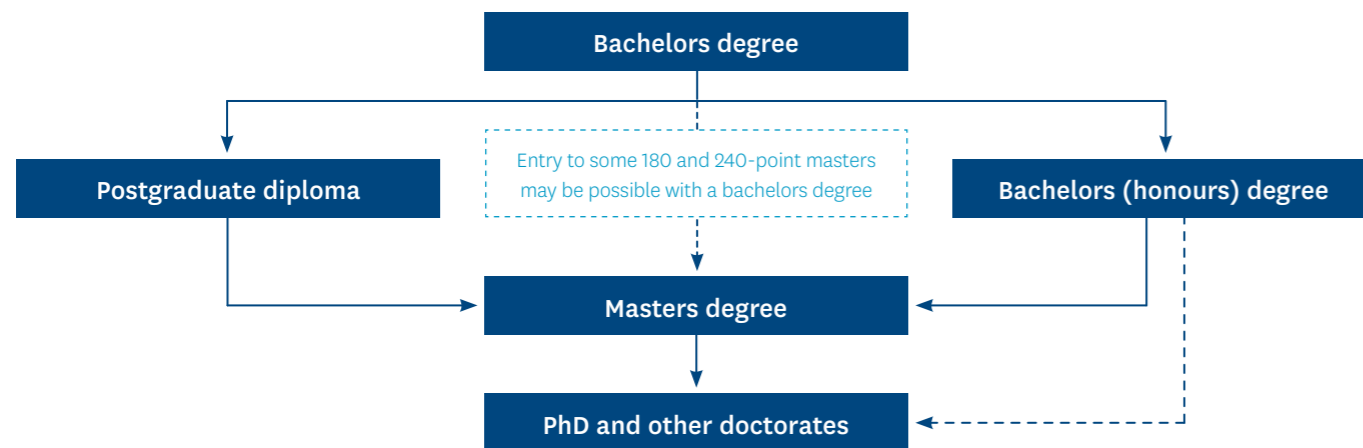
Master of Education graduate.

 [Hear more from our postgraduate students about their experience at UoA auckland.ac.nz/pg-stories](http://auckland.ac.nz/pg-stories)

Postgraduate programmes

Postgraduate study enables you to deepen your understanding, develop specialist skills and knowledge, follow your passion for research, stand out in a competitive job market or change careers. We offer a wide range of postgraduate programmes to help you reach your goals.

Pathways to our postgraduate programmes



Over 150

postgraduate programmes are on offer across over 200 subjects, including over 100 subjects available for the PhD. Options range from traditional disciplines to emerging cross-disciplinary subjects.

to learn specialist skills. A postgraduate certificate is a programme of study of 60 points and usually one semester of full-time study (or equivalent).

Bachelors Honours

Extend the knowledge you gained in your undergraduate degree with a bachelors (honours) degree. Our honours programmes are a great way to explore an area of interest from your undergraduate study in greater depth, develop research skills and give yourself an edge in the job market. Honours degrees are also seen as a pathway to further study.

Bachelors (honours) programmes usually combine taught courses with a research project. Some honours can be completed as a research-only programme.

Further study

A bachelors (honours) degree can lead onto a masters or, if you perform well in your dissertation, some subject areas may allow direct entry to a doctoral programme.

Programme entry

You must have completed an undergraduate degree at a recognised university (or similar institution) in a field relevant to your specialisation, typically with a GPA or GPE of 5.0. Some programmes may require higher grades.

Postgraduate certificate

Postgraduate certificates are a great introduction to postgraduate study and can lead to a postgraduate diploma or masters degree. These programmes are open to holders of bachelors degrees, or an equivalent qualification acceptable to the University, or those who can demonstrate extensive practical, professional or scholarly experience of an appropriate kind. They offer flexible learning and the opportunity

Postgraduate diploma

Postgraduate diplomas offer the opportunity to build on your major undergraduate subject and can be an alternative to a bachelors (honours) degree. Some postgraduate diplomas provide specialised training and the opportunity for advancement in your profession.

Postgraduate diplomas are normally completed by taught courses, but may include practical training or a research project.

Programme entry

You must have completed an undergraduate degree at a recognised university (or similar institution) in a field relevant to your specialisation, typically with a GPA or GPE of 3.0 or 4.0. Some programmes may require higher grades.

Masters

We offer an extensive range of masters degrees to allow you to increase your knowledge in your subject, gain a professionally-accredited qualification, follow your passion for research or change career whilst gaining an advanced qualification.

Taught masters provide advanced specialist training in your field and are usually completed by taught courses only, although some can include a dissertation or research project.

Research masters are completed by thesis or a combination of taught courses and a thesis. They offer the opportunity to follow your research passion whilst developing advanced research skills.

Conversion masters enable you to study a masters in a different subject to your bachelors degree. To find out if a conversion masters is available in your area of interest, contact the postgraduate adviser for that discipline: auckland.ac.nz/pgadviser

120, 180 and 240-point masters programmes

Some of our masters are available as 120-point (1 year full-time), 180-point (18 months full-time) or 240-point (2 years full-time) programmes, offering options for direct entry with a bachelors degree (to some 180 and 240-point programmes) or a bachelors (honours) or postgraduate diploma (to 120-point programmes).

Programme entry

120-point masters

You must have completed one year of postgraduate study, following an undergraduate degree, at a recognised university (or similar institution) in a field relevant to your chosen specialisation. Four-year bachelors degrees will be considered where the final year consists of postgraduate-level study.

You will typically require a GPA or GPE of 5.0. Some programmes may require higher grades.

180 and 240-point masters

You must have completed an undergraduate degree at a recognised university (or similar institution) in a field relevant to your specialisation (with the exception of conversion masters), typically with a GPA or GPE of 5.0. Some programmes may require higher grades.

Conversion masters

You will need an undergraduate degree with good passing grades. Requirements vary, so please check the relevant programme details: auckland.ac.nz/programmefinder

Doctoral degrees

A doctorate is the highest level of degree you can achieve. It gives you the freedom to follow your passion and undertake advanced research in your area of interest. You can

develop essential transferrable skills as well as specialised research skills, both of which are relevant to a range of careers.

The Doctor of Philosophy (PhD) is available in 100 different subjects and is offered in all faculties and large-scale research institutes.

The University also offers five named doctorates: Doctor of Clinical Psychology, Doctor of Education, Doctor of Fine Arts, Doctor of Health Sciences and Doctor of Medicine.

For the PhD, you will prepare a substantial thesis of original research that contributes significantly to knowledge and understanding in your discipline. Your thesis may include publications you have written under supervision for this degree or, for those in a creative arts or design discipline, you may present a body of creative work for assessment with your thesis. Our doctoral candidates work closely with at least two supervisors and many work in a team of researchers.

We offer a wealth of English-language enrichment opportunities to support your studies. All new doctoral candidates take a Diagnostic English Language Needs Assessment (DELNA) as part of their provisional goals. This helps us allocate you any English-language support you might need to ensure your academic success (see page 60 for more information on English-language support).

Programme entry

Acceptance to our doctoral programmes is based on academic merit.

You must be able to demonstrate an ability to carry out independent research and have already completed a significant research project, dissertation or thesis, at university.

You need to have completed a postgraduate qualification (or undergraduate honours or equivalent), containing a research component equivalent to no less than 30 points, with at least a B+ result (both overall and in the research component) at the University of Auckland, or equivalent, in a field related to your doctoral studies.

Your acceptance into a doctoral programme is dependent on the availability of appropriate supervision and study facilities.

Calculating your GPA/GPE

Grades or marks achieved at the University of Auckland are given a grade point average (GPA).

Grades or marks achieved at other institutions are given a grade point equivalent (GPE). Use our GPE calculator for an indication of your GPE: gpecalculator.auckland.ac.nz

English-language requirements

The minimum requirement is an overall IELTS academic score of 6.5 with no band less than 6.0, or an approved equivalent. Some programmes require higher levels of English proficiency, see: auckland.ac.nz/pg-english-reqs

Academic integrity requirement

The University of Auckland requires all students admitted into a programme to complete the Academic Integrity Course in their first semester. auckland.ac.nz/academicintegritycourse



*QS Graduate Employability Rankings 2022

Arts

Whether you're exploring an academic interest, taking a new direction or focusing on a career goal, postgraduate study will help you to enrich your skills and your future. Be part of an inspiring community of diverse students and internationally respected academic staff, and take your learning further.

Go deeper

Postgraduate study is a unique opportunity to delve more deeply into the academic interests you enjoyed during your undergraduate degree. It can offer a rich and meaningful source of personal fulfilment with life-long benefits. Advanced thinking, writing and researching in a subject you are passionate about opens the door to new ways of understanding the world and yourself.

Choose a programme that suits you

You can choose from a wide range of postgraduate taught and research degrees and diplomas. Most of our programmes can be taken part-time, and most can be started in either Semester One or Semester Two. A postgraduate taught programme enables you to acquire further specialist knowledge and theory, and explore new and emerging fields of study. A postgraduate research programme is an opportunity to demonstrate your mastery of a topic, undertake original research and practice, and define and manage a research project.

Change direction

Your undergraduate major/s may provide a foundation for you to study a different but related area at postgraduate level. For example, a BA in Māori Studies and Sociology would give you a good foundation for a BA(Hons) in Development Studies.

Pursue a professional goal

In addition to the Bachelor of Arts (Honours) and Master of Arts, we also offer profession-specific programmes in the following areas:

- Conflict and Terrorism
- Creative Writing
- Heritage Conservation
- Indigenous Studies
- Language Teaching
- Public Policy
- Translation and Communication

Research strengths

Staff in the Faculty of Arts contribute to more informed, imaginative, compassionate and equitable worlds through our research and creative practice in the humanities, social sciences, languages and cultures, and Indigenous studies. We speak truth to power, give voice to the silenced, make art, disrupt myths, guide policy, challenge hypocrisy and stoke curiosity.

Leading researchers

Collaborate with academic staff who are international leaders in their fields, passionate about making a difference. Our community of researchers have interests ranging from cybercrime and political marketing to legal ethics and race relations history. The 2022 QS World University Rankings placed us in the world's top 50 for English Language & Literature, Linguistics Anthropology and Archaeology.

We are also home to a range of specialist and cross-disciplinary research centres.

Explore our wide range of research areas and search for a potential supervisor at

arts.auckland.ac.nz/research

Research institutes, centres and groups

Our diverse research communities include:

- Academy of New Zealand Literature
- Auckland History Initiative
- Centre of Methods and Policy Application in the Social Sciences (COMPASS)
- Europe Institute
- James Henare Māori Research Centre
- Koi Tū: The Centre for Informed Futures
- New Zealand Centre for Latin American Studies
- Ngā Pae o te Māramatanga
- Public Policy Institute

Career opportunities

Postgraduate study in Arts encourages you to be a self-directed learner who pushes intellectual boundaries. You'll be researching and analysing complex information, formulating rigorous arguments, finding and communicating new solutions, cultivating creative thought leadership and developing high-value insight.

These skills can help distinguish you from others in a crowded job market, equip you for more senior roles, position you for leadership opportunities and help propel you into emerging industries.

Our graduates work in fields as diverse as archaeology, the creative sector, international relations and development, business and marketing, education, government, museums and cultural heritage and policy-making.

Study 100% online

Master of Public Policy

MPP

This programme will provide you with a foundation of the core principles, concepts and methods of public policy research and analysis, and teach you how to develop the skills to solve real-world policy problems. The courses cover Politics, Economics, Sociology and the Quantitative Social Sciences.

You will learn how to connect theory with practice by studying the nature of policy, policy design and policy process through a set of courses which includes an externship designed to facilitate work-integrated learning, as well as independent research.

auckland.ac.nz/online-mpp



Find out more
arts.auckland.ac.nz/programmes



“An Arts degree will prepare you for a fast-paced world with fast-changing trends, while future-proofing your skills!”

Eddie is a Master of Public Policy (MPP) graduate and now works as Senior Advisor Voter Participation at Auckland Council.

“I lead the development and implementation of the Voter Participation Initiative, which aims to increase voter participation in local elections. The role addresses the long-term issues that impact the ability of voters and candidates to participate in local elections.”

“Both my role and the Voter Participation Initiative are a first of their kind in local government. They involve a broad, complex and strategic programme of work, which includes analysis, research, advocacy and engagement with a wide range of stakeholders.”

“No two days are ever the same, which provides excitement and positive contrast. I enjoy the numerous opportunities I am presented with to provide expert advice on programming, partnerships and innovative initiatives both within the organisation and in the community.”

“The MPP programme gave me a firm foundation in the core principles, concepts and methods of public policy research and analysis and developed my potential for leadership in local and national government. The ability to think critically and solve public policy issues is fundamental to my job – something the MPP adequately equips all of its scholars to do.”

“The MPP also provided a lot of great opportunities for collaboration on research projects and exposure to workplace settings through external internships. It also offered leadership development through interaction with politicians, leaders and international networks.”

Eddie Tuiavii

Eddie completed a Postgraduate Diploma in Arts in Politics and International Relations and a Master of Public Policy.

Postgraduate programmes	Taught	Research	Online	Time to complete (full-time study)	Part-time study ¹
Bachelor of Arts (Honours) (BA(Hons))	✓	✓	✗	1 year	✓
Postgraduate Certificate in Translation (PGCertTrans)	✓	✗	✗	1 semester	✓
Postgraduate Diploma in Arts (PGDipArts)	✓	✗	✗	1 year	✓
Postgraduate Diploma in Global Studies (PGDipGlobalSt)	✓	✗	✗	1 year	✓
Postgraduate Diploma in Language Teaching (PGDipLT)	✓	✗	✗	1 year	✓
Postgraduate Diploma in Translation Studies (PGDipTranslationStud)	✓	✗	✗	1 year	✓
Master of Arts (MA)	✓	✓	✗	1 or 18 months	✓
Master of Communication (MC) ⁷	✓	✗	✗	18 months	✓
Master of Conflict and Terrorism Studies (MCTS)	✓	✓	✗	1 year or 18 months	✓
Master of Creative Writing (MCW)	✗	✓	✗	1 year	✗
Master of Indigenous Studies (MIndigSt)	✓	✗	✗	1 year or 18 months	✓
Master of Literature (MLitt)	✗	✓	✗	1 year	✓
Master of Public Policy (MPP)	✓	✓	✓	1 year or 18 months	✓
Master of Teaching English to Speakers of Other Languages (MTESOL)	✓	✗	✗	1 year	✓
Master of Theology (MTheol)	✗	✓	✗	1 year	✓
Master of Translation (MTrans)	✓	✗	✗	18 months	✓
Doctor of Philosophy (PhD)	✗	✓	✗	3–4 years	✓
Interfaculty degrees and diplomas					
Master of Global Studies (MGlobalSt)	✓	✗	✗	18 months	✓
Master of Heritage Conservation (MHerCons)	✓	✗	✗	1 year or 18 months	✓

International students ¹	Points required	Start			More information
		Semester One	Semester Two	1 December ²	
✓	120	✓	✓ ⁴	✗	auckland.ac.nz/ba-hons
✓	60	✓	✓	✗	auckland.ac.nz/pgcerttrans
✓	120	✓	✓ ⁴	✗	auckland.ac.nz/pgdiparts
✓	120	✓	✗	✗	auckland.ac.nz/pgdipglobalst
✓	120	✓	✓	✗	auckland.ac.nz/pgdiplt
✓	120	✓	✓ ⁴	✗	auckland.ac.nz/pgdiptranslationstud
✓	120 or 180	✓	✓ ⁴	✓ ²	auckland.ac.nz/ma
✓	180	✓	✗	✗	auckland.ac.nz/newprogrammes
✓	120 or 180	✓	✓	✗	auckland.ac.nz/mcts
✓	120	✗	✓	✗	auckland.ac.nz/mcw
✓	120 or 180	✓	✓	✗	auckland.ac.nz/mindigst
✓	120	✓	✓	✓ ²	auckland.ac.nz/mlitt
✓	120 or 180	✓	✓	✗	auckland.ac.nz/mpp
✓	120	✓	✓	✗	auckland.ac.nz/mtesol
✓	120	✓	✓	✗	auckland.ac.nz/mtheol
✓	180	✓	✗	✗	auckland.ac.nz/mtrans
✓	Thesis ⁵	Begin at any time			auckland.ac.nz/phd
✓	180	✓	✗	✗	auckland.ac.nz/mglobalst
✓	120 or 180	✓	✗	✗	auckland.ac.nz/mhercons

- Part-time study options are generally not available to international students on student visas. International students must be enrolled full-time to meet the requirements of their student visa.
- 1 December start available for 120-point research masters only, subject to supervisor availability.
- Based on annual tuition fees for full-time study of 120 points except: programmes that require 60 points to complete (the annual tuition fee for 60 points is shown); Tuition fees are indicative only and the fees for 2023 will be set at the end of 2022. All students will also pay a student services fee. As an indication, this fee is \$979.20 for students undertaking a full-time load of 120 points in 2022. Students taking fewer than 120 points pay proportionately lower fees.
- Semester Two start may not be possible for all subjects/majors/specialisations and only if places are available.

- Upon the recommendation of the Academic Head and approval from the Board of Graduate Studies, a candidate may present a corpus of creative work for assessment with a written thesis, comprising an integrated whole.
- New international PhD students will be accorded domestic status for the purposes of tuition fees, subject to supervisory and residency requirements. A new international PhD student is defined as a foreign student enrolled for the first time in a Doctor of Philosophy programme at a New Zealand university. Note that to be eligible for the domestic fee, you must reside in New Zealand for the duration of your doctoral programme. However, you may undertake research activities overseas during your doctoral programme (for a cumulative total of no more than 12 months).
- Subject to final regulatory approval.

*Tuition fees will be charged at the respective rate for the subject.

Business School

Would you like to launch a career in business, advance your business knowledge and skills, move up in your current field or change professional direction? Are you passionate about research and innovation that addresses some of the world's biggest challenges? The Business School offers a range of flexible postgraduate study options and pathways to suit your interests, level of experience and career goals.

Our postgraduate taught, research and professional programmes are designed to equip you with industry and practitioner-focused learning, build your professional network and enhance your prospects for career advancement or further study. You will have access to the modern learning and research facilities at the iconic Sir Owen G Glenn Building.

We understand how important it is for postgraduate students to balance study with work and personal commitments, so we have designed our programmes to work around you.

We offer:

- A broad range of Business specialisations at masters, honours or PhD level, so you can pursue your passion.
- Professional courses within quarter-based teaching terms, in the evenings or weekend blocks to suit working professionals.
- Part-time options for most programmes with multiple entry points.
- New for 2022 - a bridging pathway from other Masters degrees into the PhD programme in Business.
- A number of fully online qualifications through Auckland Online.
- Flexible pathways for you to complete an internationally recognised masters degree that builds on your professional experience, if you do not have a first degree.
- Flexible delivery using online components to support in-class workshops.
- Shorter Postgraduate Certificate qualifications if you're not ready to commit to a masters degree.

Our **professional programmes** are designed for working professionals, from new and recent graduates to the highly experienced, who are seeking to accelerate or pivot their career. You will be equipped with cutting-edge skills and an advanced understanding of your chosen field within a global context.

For Business graduates, our **taught programmes** embed applied learning opportunities to build on your qualification and help you launch a business career in your chosen specialisation or apply your skills to a new field.

Through our specialist masters, honours and PhD **research programmes**, you will develop advanced knowledge, skills and perspectives as well as have the opportunity to conduct independent research with real-world impact alongside internationally renowned academics.

business.auckland.ac.nz/pg

Research strengths

At the Business School, we have an unconditional commitment to quality teaching and research in topics that shape the futures of people and organisations for the benefit of New Zealand and the world.

Our academics are engaged in research that enables people to develop ideas, knowledge and skills that shape their own development, advance New Zealand business, influence the global economy and enhance society. Their projects frequently involve our postgraduate students and collaborations with international colleagues.

The Business School focuses on four strategic research and education themes that align closely with the University's commitment to research on issues of national and international significance:

- Innovation and value creation
- Succeeding in international markets
- Productivity and sustainable business
- Leadership and governance

Our researchers work in a number of disciplinary areas:

- Accounting
- Commercial Law
- Economics
- Finance
- Global Management and Innovation (includes Innovation & Entrepreneurship, International Business, and Management)
- Information Systems
- International Business
- Management
- Marketing
- Operations and Supply Chain Management
- Property

We also host research institutes and centres that focus on long-term programmes of high relevance, such as building New Zealand's business connections with Asia, digital enterprise, modern slavery, retirement policy, supply chain management, Māori and Pacific business development, applied economics, and energy and resource use.

Career opportunities

Business School graduates occupy leading positions in business and professions within New Zealand and around the world. Our masters degrees in Commerce (with specialisations in eight subject areas) and Property open up

opportunities for specialist careers, which are highly valued in industry and the public sector. Our professional programmes equip graduates to be work-ready in their chosen specialisation, or primed for career progression in leadership or management roles. Our Business Masters programmes prepare graduates for a new career in Business in just 15 to 18 months. Our research masters, honours and PhD programmes lead to changemaking careers in innovation, research and academia.

Study 100% online

Master of Business Development

MBusDev

Leverage your professional knowledge, together with our business expertise, to help you grow your organisation's business.

auckland.ac.nz/online-mbusdev

Master of Property Practice

MPropPrac

This multidisciplinary, practitioner-focused programme will prepare you to enter or progress careers in property.

auckland.ac.nz/online-mpropprac

Master of Information Governance

MInfoGov

Develop the knowledge and skills for effectively managing information privacy, security and compliance within organisations.

auckland.ac.nz/online-minfegov

Shorter postgraduate certificate programmes are also available for these subjects.

Real-world learning that transforms lives and businesses

Find out more
business.auckland.ac.nz/pg



“The support from my supervisor for my thesis has been exceptional.”

Benjamin is a Master of Commerce graduate, with a major in Global Management and Innovation. He is currently working as a Management Consultant at KPMG.

“The Global Management and Innovation major allowed me to further my interest in International Business and positions me to research modern slavery, which is something I am passionate about.

“I would really like to work more in the area of modern slavery, helping firms understand the role they play in addressing such an issue. Long-term, I would like to work as a private consultant.

“It’s easy to think of your time at university as preparation years for when the ‘real work’ begins, but I encourage everyone to get involved, ask lots of questions, stop caring so much about what others think of you, and take responsibility and initiative in your studies. Also, remember why you are studying!

“My advice is to make the most of the expertise of your lecturers. The classes are smaller and often have more space for discussion, so lecturers have time to answer your questions. Ask away!

“I loved the opportunities to engage with the cohort and build a network of not only colleagues but friends. Despite the restrictions brought on by Covid-19, I believe the online learning experience and its challenges brought us together and helped us build resilience.”

Benjamin Robb

Benjamin is a recipient of the Kupe Leadership Scholarship.



Watch Benjamin speak about his postgraduate experience at auckland.ac.nz/pg-stories

Postgraduate programmes (offered in semesters)	Taught / Coursework	Research	PhD pathway ¹⁰	Time to complete (full-time study)	Part-time study ¹
Bachelor of Commerce (Honours) (BCom(Hons))	✓	✓	✓	12 months	✓
Bachelor of Property (Honours) (BProp(Hons))	✓	✓	✓	12 months	✓
Master of Commerce (MCom)	✓	✓	✓	12, 15 or 18 months	✓
Master of Property (MProp)	✓	✓	✓	12, 15 or 18 months	✓
Doctor of Philosophy (PhD)	✗	✓	✓	3–4 years	✓
Interfaculty degrees and diplomas					
Postgraduate Diploma in Bioscience Enterprise (PGDipBioEnt)	✓	✗	✗	12 months	✓
Postgraduate Diploma in Operations Research and Analytics (PGDipORAn)	✓	✗	✗	12 months	✓
Master of Bioscience Enterprise (MBioEnt)	✗	✓	✓	12 months	✓
Master of Taxation Studies (MTaxS)	✓	✓	✓	12 or 18 months	✓
Master of Information Technology (MInfoTech)	✓	✗	✗	12, 18 or 24 months	✓
Master of Operations Research and Analytics (MORAn)	✓	✓	✓	12 or 18 months	✓
Master of Organisational Psychology (MORgPsych)	✓	✓	✓	18 months	✗

Professional programmes (offered in quarters)	On-campus	Online	Time to complete (full-time study)	Part-time study ¹
Postgraduate Certificate in Leadership and Governance (PGCertLdGov)	✓	✗	12 months ⁵	✓
Postgraduate Diploma in Business (PGDipBus)	✓ ³	✓ ³	12 months	✓
Master of Applied Finance (MAppFin) ⁹	✓	✗	18 months	✓
Master of Business Administration (MBA)	✓	✗	18 months	✓
Master of Business Analytics (MBusAn)	✓	✗	15 months ⁶	✓
Master of Business Development (MBusDev)	✗	✓	12 or 18 months ⁶	✓
Master of Business Management (MBM)	✓	✗	12 or 18 months ⁶	✓
Master of Information Governance (MInfoGov)	✗	✓	18 months	✓
Master of Management (MMgt)	✓	✗	15 months	✗
Master of Professional Accounting (MProfAcctg)	✓	✗	18 months	✗
Master of Property Practice (MPropPrac)	✗	✓	18 months	✓

Explore our short qualifications

We also have a range of postgraduate certificate and diploma programmes that you can choose from. These flexible programmes enable you to update your business skills and knowledge, while enhancing your employability.

business.auckland.ac.nz

International students ¹	Points required	Start			More information
		Semester One	Semester Two	1 December ²	
✓	120	✓	✓	✗	auckland.ac.nz/bcom-hons
✓	120	✓	✓	✗	auckland.ac.nz/bprop-hons
✓	120 or 180	✓	✓	✓ ²	auckland.ac.nz/mcom
✓	120 or 180	✓	✓	✓ ²	auckland.ac.nz/mprop
✓	Thesis	Begin at any time			auckland.ac.nz/phd
Interfaculty degrees and diplomas					
✓	120	✓	✗	✗	auckland.ac.nz/pgdipbioent
✓	120	✓	✓	✗	auckland.ac.nz/pgdiporan
✓	120	✓	✗	✓ ²	auckland.ac.nz/mbioent
✓	120 or 180	✗	✓	✓	auckland.ac.nz/mtaxs
✓	120, 180 or 240	✗	✓	✓ ⁴	auckland.ac.nz/minfotech
✓	120 or 180	✓	✓	✗	auckland.ac.nz/moran
✓	180	✓	✗	✗	auckland.ac.nz/morgpsych

International students ¹	Points required	Start		More information
		Q2	Q4	
✗	60	✗	✓	auckland.ac.nz/pgcertldgov
✗	120	✓	✓	auckland.ac.nz/pgdipbus
✓	180	✗	✓	auckland.ac.nz/newprogrammes
✗	180	✓	✓	auckland.ac.nz/mba
✓	180	✓	✗	auckland.ac.nz/mbusan
✗ ⁸	120 or 180	✓	✓	auckland.ac.nz/online-mbusdev
✗	120 or 180	✓	✓	auckland.ac.nz/mbm
✗ ⁸	120 or 180	✓	✓	auckland.ac.nz/online-minfogov
✓	180	✓	✓	auckland.ac.nz/mmgt
✓	240	✓	✓	auckland.ac.nz/mprofacctg
✗ ⁸	180	✓	✓	auckland.ac.nz/online-mpropprac

1. Part-time study options are generally not available to international students on student visas. International students must be enrolled full-time to meet the requirements of their student visa.

2. 1 December start available for 120-point research masters only subject to supervisor availability.

3. Delivered through a combination of online and campus-based learning. The first 60 points are delivered through Auckland Online, with the final 60 points delivered either online or on-campus depending on the specialisation.

4. Late Year Term entry in November is only available for the 240 point programme.

5. Part-time only.

6. Evening delivery.

7. MBA is delivered in weekend block format—Friday afternoon and all day Saturday.

8. Available for offshore international students only. Please see online.auckland.ac.nz for more information.

9. Subject to CUAP approval.

10. A postgraduate certificate (60 points) and a postgraduate diploma (120 points) are now available as pathways from many Professional masters and other degrees to the PhD programme in the Business School.

“My degree will prepare me for a PhD, it will help me get the jobs I want, whether in academia or an industry of embodied-energy efficient architecture.”

“Since completing my Bachelor of Architecture at the University in 2000, I have been travelling, working and raising kids. I worked in Christchurch, building passive solar houses and overseas in Bali and the US.

“I returned to New Zealand just in time for Covid-19 Alert Level 4 to begin. I knew I had to work in a New Zealand architectural practice for six months before I could re-register. I found it challenging to land a job, so it was a good opportunity to do my masters and familiarise myself with the latest building challenges in New Zealand.

“I like that the School of Architecture and Planning is interested in Māori and Pacific architecture as well as Asian and the rest of the non-Western world.

“My lecturers and supervisors have been great. They can see where I need help and what my strengths are, and offer me tools and techniques in writing my thesis, drawing my ideas out while also introducing me to related endeavours. I have had struggles, but I have found myself enjoying the freedom to follow my interests, the support and critiques, the comparisons to similar projects, as well as being shown ways to share my research. I am researching how architects can make spaces adaptable to the human senses and how this can encourage mutual maintenance and temperance of our society’s addiction to fossil fuels.”

“My father is Indonesian from Bali, and I grew up there. I would like to see how Balinese architecture can inform architectural practice in New Zealand. I think we should always question our profession and where we are heading with it, so this was my chance to open my mind and help shape the future I want to see. While architectural practice and building is a part of my life, I feel academia also has its pull. I am using this time to figure out whether I might enjoy doing a PhD, and life at the University has certainly been kind.”

Trishna Newson

Trishna is a Master of Architecture student and a Bachelor of Architectural Studies graduate.



Creative Arts and Industries

Join our lively research environment filled with fellow creatives and internationally recognised artists, practitioners, teachers and researchers. We offer programmes in Architecture, Dance, Design, Fine Arts, Music, Urban Design and Urban Planning.

Creative careers

As a faculty, we promote creative rebellion - pushing existing boundaries and problem solving to overcome creative challenges. Students in our programmes advance their skills under the guidance of leading practitioners, academics and researchers, with a strong focus on creative thinking.

Students also develop important supporting skills: effective communication, curiosity, leadership, resilience and perseverance, important assets for working in any field including academia.

Combined with becoming proficient in the latest digital and technical resources in these fields, students graduate with a well-rounded creative education, enabling them to be more adaptable to changes in the job market.

Some of the careers that our graduates go into include:

- **Architecture, urban planning, urban design:** architect, building industry consultant, digital design professional, heritage consultant, urban planner, urban designer, resource consent planner, transportation planner.
- **Dance Studies:** professional choreographer, professional dancer, arts administrator/manager/director, educator.
- **Design:** design strategist, digital/experience/interaction/product/service designer.
- **Fine Arts:** artist, educator, art curator, creative director, art writer.
- **Music:** educator, performer, music producer, music journalist, instrumental teacher, arranger, composer.

We encourage imaginative thinking, fresh ideas and innovation. Studying with us will help set you up for a life of creative research, discovery and practice. Our strong links with national and international creative communities enable you to connect and foster relationships with relevant professional and business organisations as part of your study.

There's also something for everyone, regardless of your educational background, career goals, and study needs: part-time study options, research-focused qualifications, and programmes towards upgrading your leadership potential. We've also started to offer more single-semester Postgraduate Certificate qualifications in recent years for those who want stronger educational foundations or so they can get a taste of what's to come before embarking on longer-term postgraduate study.

The PhD is available for advanced research across all our disciplines. You can also choose a Doctor of Fine Arts or PhD with scholarly creative work to link theory and practical elements such as contemporary art, design, performance or film into your research and final submission.

Research strengths

- **Architecture, urban planning, urban design:** urban and architectural resilience and sustainability, urban and spatial planning and placemaking, design research, the history, theory and pedagogy of the built environment, including Māori and Pacific-focused research.
- **Dance Studies:** choreography, performance, community dance, dance education, ethnography, history and technology.
- **Design:** advanced technologies, global challenges, community engagement, natural environment, enterprise, theory and practice methodologies, impact and leadership.
- **Fine Arts:** curatorial, critical and theoretical research contributing to local and international contemporary arts discourse.
- **Music:** performance, composition, improvisation, music in historical and social contexts, music education and pedagogy, music production, musicians' health.

Advance your creative interests through collaboration and research

Find out more
auckland.ac.nz/creative

Creative Arts and Industries

Postgraduate programmes		Taught	Research	Time to complete (full-time study)	Part-time study ¹	International students ¹
Architecture, Urban Planning and Urban Design	Graduate Diploma in Architectural Studies (GradDipAS)	✓	✗	1-1.5 years	✗	✓
	Postgraduate Certificate in Architectural Project Management (PGCertAPM)	✓	✗	0.5 year	✓	✓
	Postgraduate Diploma in Architecture (PGDipArch)	✓	✗	1 year	✓	✓
	Master of Architecture (MArch)	✗	✓	1 year	✓	✓
	Master of Architecture (Professional) (MArch(Prof)) ⁸	✗	✓	2 years	✓	✓
	Master of Architecture (Professional) and Heritage Conservation (MArch(Prof)HerCons) ⁸	✗	✓	2.5 years	✓	✓
	Master of Architecture (Professional) and Housing Studies (MArch(Prof)HousSt)	✗	✓	2.5 years	✗	✓
	Master of Architecture (Professional) and Urban Design (MArch(Prof)UrbDes) ⁸	✗	✓	2.5 years	✓	✓
	Master of Architecture (Professional) and Urban Planning (Professional) (MArch(Prof)UrbPlan(Prof)) ⁸	✗	✓	3 years	✓	✓
	Master of Housing Studies (MHousSt)	✓	✗	1-1.5 years	✗	✓
	Master of Urban Design (MUrbDes)	✓	✗	1 year	✓	✓
	Master of Urban Planning (MUrbPlan)	✗	✓	1 year	✓	✓
	Master of Urban Planning (Professional) (MUrbPlan(Prof)) ⁸	✓	✗	2 years	✓	✓
	Master of Urban Planning (Professional) and Heritage Conservation (MUrbPlan(Prof)HerCons) ⁸	✓	✗	2.5 years	✓	✓
	Master of Urban Planning (Professional) and Urban Design (MUrbPlan(Prof)UrbDes) ⁸	✓	✗	2.5 years	✓	✓
Doctor of Philosophy (PhD)	✗	✓	3-4 years	✓	✓	
Dance Studies	Bachelor of Dance Studies (Honours) (BDanceSt(Hons))	✓	✗	1 year	✓	✓
	Postgraduate Diploma in Dance Studies (PGDipDanceSt)	✓	✗	1 year	✓	✓
	Master of Community Dance (MCommDance)	✗	✓	1 year	✓	✓
	Master of Dance Movement Therapy (MDMT)	✗	✓	2 years	✓	✓
	Master of Dance Studies (MDanceSt)	✗	✓	1-1.5 years	✓	✓
	Doctor of Philosophy (PhD)	✗	✓	3-4 years	✓	✓
Design	Postgraduate Certificate in Design (PGCertDes)	✓	✗	0.5 year	✓	✓
	Master of Design (MDes)	✓	✓	1-1.5 years	✓	✓
	Doctor of Philosophy (PhD)	✗	✓	3-4 years	✓	✓
Fine Arts	Postgraduate Certificate in Fine Arts (PGCertFA)	✓	✗	0.5 year	✓	✓
	Postgraduate Diploma in Fine Arts (PGDipFA)	✓	✗	1 year	✓	✓
	Master of Fine Arts (MFA)	✓	✓	1-1.5 years	✓	✓
	Doctor of Fine Arts (DocFA)	✗	✓	3-4 years	✓	✓
	Doctor of Philosophy (PhD)	✗	✓	3-4 years	✓	✓
Music	Bachelor of Music (Honours) (BMus(Hons))	✓	✗	1 year	✓	✓
	Graduate Diploma in Music (GradDipMus)	✓	✗	1 year	✓	✓
	Postgraduate Certificate in Music (PGCertMus)	✓	✗	0.5 year	✓	✓
	Postgraduate Diploma in Music (PGDipMus)	✓	✗	1 year	✓	✓
	Master of Music (MMus)	✓	✓	1-1.5 years	✓	✓
	Doctor of Philosophy (PhD)	✗	✓	3-4 years	✓	✓
Interfaculty degrees and diplomas						
	Master of Heritage Conservation (MHerCons) – Built Heritage	✓	✗	1-1.5 years	✓	✓

Points required	Semester start			More information
	One	Two	1 December ²	
120 or 150	✓	✗	✗	auckland.ac.nz/graddipas
60	✓	✓	✗	auckland.ac.nz/pgcertapm
120	✓	✗	✗	auckland.ac.nz/pgdiparch
120	✓	✓	✓ ²	auckland.ac.nz/march
240	✓	✓ ⁴	✗	auckland.ac.nz/marchprof
300	✓	✗	✗	auckland.ac.nz/marchprofhercons
300	✓	✗	✗	auckland.ac.nz/marchprofhousst
300	✓	✗	✗	auckland.ac.nz/marchprofurbdes
360	✓	✗	✗	auckland.ac.nz/marchprofurbplanprof
120 or 180	✓	✗	✗	auckland.ac.nz/mhousst
120	✓	✓ ⁷	✗	auckland.ac.nz/murbdes
120	✓	✓	✓ ²	auckland.ac.nz/murbplan
240	✓	✗	✗	auckland.ac.nz/murbplanprof
300	✓	✗	✗	auckland.ac.nz/murbplanprofhercons
300	✓	✗	✗	auckland.ac.nz/murbplanprofurbdes
Thesis ⁵	Begin at any time			creative.auckland.ac.nz/doctoral-study
120	✓	✓ ⁴	✗	auckland.ac.nz/bdancest-hons
120	✓	✓ ⁴	✗	auckland.ac.nz/pgdipdancest
120	✓	✓	✓ ²	auckland.ac.nz/mcommdance
240	✓	✗	✗	auckland.ac.nz/mdmt
120 or 180	✓	✓	✓ ²	auckland.ac.nz/mdancest
Thesis ⁵	Begin at any time			creative.auckland.ac.nz/doctoral-study
60	✓	✗	✗	auckland.ac.nz/pgcertdes
120 or 180	✓	✗	✗	auckland.ac.nz/mdes
Thesis ⁵	Begin at any time			creative.auckland.ac.nz/doctoral-study
60	✓	✓	✗	auckland.ac.nz/pgcertfa
120	✓	✓	✗	auckland.ac.nz/pgdipfa
120 or 180	✓	✓	✗	auckland.ac.nz/mfa
360	Begin at any time			auckland.ac.nz/docfa
Thesis ⁵	Begin at any time			creative.auckland.ac.nz/doctoral-study
120	✓	✓ ⁴	✗	auckland.ac.nz/bmus-hons
120	✓	✗	✗	auckland.ac.nz/graddipmus
60	✓	✓	✗	auckland.ac.nz/pgcertmus
120	✓	✓ ⁴	✗	auckland.ac.nz/pgdipmus
120 or 180	✓	✓ ⁴	✓ ²	auckland.ac.nz/mmus
Thesis ⁵	Begin at any time			creative.auckland.ac.nz/doctoral-study
120 or 180	✓	✗	✗	auckland.ac.nz/mhercons

“What was really appealing about the Master of Social Work programme was the challenge and growth it offered.”

“After a few years of being a full-time parent, I began to seek out opportunities that would allow me to bring together my previous work experience supporting people facing hardship, and my interest in how practical, on-the-ground care of people experiencing crisis interacts with structural and societal frameworks.”

“I wanted to work in a job that considered both the big picture of structural change and the more immediate needs of a person / whānau within the system.”

“Doing masters level study really challenged me to become a more critical and reflective thinker. The practical placements that you go on through your studies also really helped me grow and become more confident before re-entering the workforce.”

“One of the best parts of the programme is the great people you meet who become your colleagues and contacts. As I studied part-time, I was a part of two cohorts and got to know my classmates in both. I especially appreciated having people working in social work roles come and teach us at times, which was very insightful.”

“The practical placements were excellent learning experiences. My first placement with Lifewise Housing First was great. It was very interesting trying to reconcile what we had learned and discussed in classes with the day-to-day work in an organisation. I did my placement there alongside another student from my cohort which meant we could do peer supervision; and two and a half years later, we are now both working together as colleagues.”

“I would recommend this programme to people who want to really consider how they work with others and why. Previously in my career, I have felt like I was crashing around the place, trying to do something good but not having the skills to critically reflect on what I was doing. This programme has been great in helping me develop the skills and confidence I needed to re-enter the workforce.”

Rachel Bruns

Master of Social Work (Professional) graduate.



Education and Social Work

Postgraduate study at the Faculty of Education and Social Work is centred around creating a better future and inspiring people to reach their potential. With study options in education, social work, counselling, community leadership and professional supervision, our postgraduate students are advancing their knowledge, leadership skills and career opportunities, while creating positive change in their communities.

A passion for people is at the heart of research and practice at the Faculty of Education and Social Work. Our postgraduate community is leading research and teaching to address wide-ranging education and social justice issues.

Here, learning has impact, and our staff and students contribute knowledge vital to the education and wellbeing of communities and our world. Our research harnesses the potential of diversity in education and social justice issues nationally, regionally and globally. Whether you enrol in taught or research programmes, you will be surrounded and supported by world-class academics.

Our collaborative relationships with schools and communities of practice have enabled the faculty to secure significant funding for its research and professional fellowships, along with postgraduate study scholarships for outstanding researchers from New Zealand and around the world.

To suit the needs of working professionals, many of our programmes offer flexible study options, including evening courses, online learning and intensive block courses during school holidays. We also offer extensive academic and personal support services for postgraduate students.

Join the award-winning community of active learners who, like you, are dedicated to finding research-informed solutions that will improve the lives of generations to come.

Research strengths

Research at the faculty ranges across diverse themes including: advancing equity and social justice; Pasifika education research; leading learning; promoting lifelong wellbeing; supporting intercultural inclusiveness; and enhancing indigenous opportunities. Research strengths include:

- Applied theatre in education
- Education and schooling success for diverse communities within New Zealand
- Educational leadership
- Health education, physical education and sports studies
- Knowledge in education
- Literacies and languages
- Pacific education, languages and communities
- Māori and indigenous language revitalisation, language education and language policy
- Social work practice strategies for promoting the wellbeing of diverse populations

Research and Professional Development Centres

The faculty is home to internationally recognised research centres and units exploring a wide range of educational and social science research.

- Woolf Fisher Research Centre
- The Centre for Asia Pacific Refugee Studies
- Centre for Arts and Social Transformation
- The Marie Clay Research Centre
- Centre for Community Research and Evaluation
- Centre for Child and Family Research
- The Richard Tinning Research Unit
- Knowledge and Education Research Unit
- Critical Research Unit in Applied Theatre
- Research Unit in Pacific and International Education
- The Kohia Centre

Study 100% online

Master of Educational Leadership

MEdLd

The Master of Educational Leadership can be completed fully online through Auckland Online (a part-time two-year structured online programme). This programme will help you develop the skills to go further in your role and lead improvements that serve diverse communities and learners. You'll critique and contribute to the educational research that is shaping educational policy and practice, and prepare yourself for leadership roles in schools or centres, specialist education and policy development.

auckland.ac.nz/online-medld

No. 1 University in New Zealand for Education*

*QS World University Rankings by Subject 2022

Find out more
education.auckland.ac.nz/postgraduate

Education and Social Work

Postgraduate programmes		Taught	Research	Online	Time to complete (full-time study)	Part-time study ¹	
Counselling	Postgraduate Diploma in Counselling Theory (PGDipCounTh)	✓	✗	✗	1 year	✓	
	Master of Counselling (MCouns)	✗	✓	✗	1 or 2 years	✓	
Education	Bachelor of Education (Teaching) (Honours) (BEd(Tchg)(Hons))	✓	✓	✗	1 year	✓	
	Graduate Diploma in Teaching (GradDipTchg) – Early Childhood Education/Primary/Secondary	✓	✗	✓	1 year	✓ ¹⁰	
	Postgraduate Certificate in Teaching Linguistically Diverse Learners	✓	✗	✗	2 years part-time	✓	
	Postgraduate Diploma in Teaching Linguistically Diverse Learners	✓	✗	✗	2–4 years part-time	✓	
	Postgraduate Certificate in Education (PGCertEd)	✓	✗	✗	1 semester	✓	
	Postgraduate Certificate in Higher Education (PGCertHigherEd)	✓	✗	✗	Part-time only	✓	
	Postgraduate Diploma in Education (PGDipEd) - Literacy	✓	✗	✗	1 year	✓	
	Postgraduate Diploma in Educational Leadership (PGDipEdLd)	✓	✗	✗	1 year	✓	
	Master of Education (MEd)	✗	✓	✗	1 year or 18 months	✓	
	Master of Educational Leadership (MEdLd)	✓	✓	✓	1 year or 18 months	✓	
	Master of Education Practice (MEdPrac)	✓	✗	✓	1 year or 18 months	✓	
	Master of Higher Education (MHigherEd)	✓	✗	✗	Part-time only	✓	
	Master of Professional Supervision (MProfSup) ²⁶	✗	✓	✗	18 months	✓	
	Master of Professional Supervision – Practice (MProfSupPrac) ²⁶	✓	✗	✗	18 months	✓	
	Doctor of Education (EdD)	✗	✓	✗	4 years (first 2 years part-time)	✓	
	Doctor of Philosophy (PhD)	✗	✓	✗	3–4 years	✓	
	Education options also exist within the programmes for BA(Hons) and MA. See auckland.ac.nz/ba-hons and auckland.ac.nz/ma						
	Social Work	Postgraduate Certificate in Professional Supervision (PGCertProfSup)	✓	✗	✗	Part-time only	✓
Postgraduate Certificate in Social and Community Leadership (PGCertSCL)		✓	✗	✗	1 semester	✓	
Postgraduate Diploma in Professional Supervision (PGDipProfSup)		✓	✗	✗	1 year	✓	
Postgraduate Diploma in Social Work (PGDipSW)		✓	✗	✗	1 year	✓	
Master of Social and Community Leadership (MSCL)		✗	✓	✗	18 months	✓	
Master of Social Work (MSW)		✗	✓	✗	1 or 2 years	✓	
Master of Social Work (Professional) (MSW(Prof))		✓	✗	✗	2 years	✓	
Doctor of Philosophy (PhD)		✗	✓	✗	3–4 years	✓	
Interfaculty degrees and diplomas							
Master of Professional Studies (MProfStuds) – Education/Mathematics Education		✓	✗	✗	1 year	✓	

International students ¹	Points required	Start		More information
		Semester One	Semester Two	
✓	120	✓	✗	auckland.ac.nz/pgdipcounsth
✓	120 or 240	✓	✗	auckland.ac.nz/mcouns
✓	120	✓	✓	auckland.ac.nz/bedtchg-hons
✓	150	✓	✗	auckland.ac.nz/graddiptchg-ece auckland.ac.nz/graddiptchg-primary auckland.ac.nz/graddiptchg-sec
✓	60	✓	✗	auckland.ac.nz/pgcerttldl
✓	120	✓	✗	auckland.ac.nz/pgdiptldl
✓	60	✓	✓	auckland.ac.nz/pgcerted
✓	60	✓	✗	auckland.ac.nz/pgcerthighed
✓	120	✓	✓	auckland.ac.nz/pgdiped
✓	120	✓	✓	auckland.ac.nz/pgdipedld
✓	120 or 180	✓	✓	auckland.ac.nz/med
✓	120 or 180	✓	✓	auckland.ac.nz/medld
✓	120 or 180	✓	✓	auckland.ac.nz/medprac
✗	120 or 180	✓	✗	auckland.ac.nz/mhighed
✓	180	✓	✓	auckland.ac.nz/newprogrammes
✓	180	✓	✓	auckland.ac.nz/newprogrammes
✗	360	✗	✓	auckland.ac.nz/edd
✓	Thesis ⁵	Begin at any time		education.auckland.ac.nz/phd
✗	60	✓	✗	auckland.ac.nz/pgcertprofsup
✓	60	✓	✓	auckland.ac.nz/pgcertscl
✗	120	✓	✓	auckland.ac.nz/pgdipprofsup
✓	120	✓	✓	auckland.ac.nz/pgdipsw
✓	180	✓	✓	auckland.ac.nz/mscl
✓	120 or 240	✓	✓	auckland.ac.nz/msw
✓	240	✓	✗	auckland.ac.nz/mswprof
✓	Thesis ⁵	Begin at any time		education.auckland.ac.nz/phd
✓	120	✓	✓	auckland.ac.nz/mprofstuds

Engineering

Get prepared to take on global challenges with the right technical acumen, theoretical knowledge and hands-on learning opportunities provided by our world-class engineering experts. Our postgraduate options are broad, catering to those with engineering undergraduate backgrounds, professional engineers and more.

The Faculty of Engineering/Te Herenga Mātai Pūkaha is Aotearoa's top engineering faculty*, excelling in teaching and research across five unique departments and over 20 specialisations dedicated to equipping you with the skills to contribute to a better world.

Our postgraduate cohort is becoming as diverse as our country and workplaces. With students from over 65 countries and all walks of life enrolled, you'll be exposed to the core course material that contributes to our reputation of educational excellence, as well as the benefits that come with the many perspectives of your peers. We believe in cultivating a welcoming learning environment that creates the right values needed to address the global challenges of tomorrow — from climate change, environmental sustainability and structural safety, to managing engineering teams, creating accessible software and improving healthcare systems.

There's also something for everyone, regardless of your educational background, career goals and study needs: part-time study options, research-focused qualifications, programmes towards upgrading your management potential and more. We've also started to offer more single-semester Postgraduate Certificate qualifications in recent years for those who want stronger educational foundations, or so they can get a taste of what's to come before embarking on longer-term postgraduate study.

What unifies our staff and students is our belief in the power engineering has to tackle the future of work and contribute to a world we'd like to live in. Much of what our graduates have taken with them to academia, industry and their communities are values beyond their textbooks: collaboration, intellectual independence, leadership, practical skills and the empathy to understand the environments around them.

*QS World University Rankings by Subject 2021

Research strengths

With five departments being home to a broad range of impact-driven research, we're covered on most aspects of engineering, from nanomaterials to large structures and the environment. Some of our research areas include:

- Advanced, novel, smart and new materials
- Aerospace and space systems engineering
- Biomechanical engineering
- Computational science and engineering
- Disaster management and civil engineering for earthquake mitigation
- Engineering products and processes for sustainability
- Food and bioproducts
- Geothermal and reservoir engineering
- Healthcare and medical devices
- Operations research and analytics
- Manufacturing, automation and Industry 4.0
- Power systems engineering
- Project management
- Robotics and human interaction
- Software engineering
- Structural engineering
- Water engineering

Study 100% online

Master of Engineering Project Management

MEPM

We're now offering the Master of Engineering Project Management via Auckland Online. Aimed at working professionals, this qualification combines coursework — methodologies and tools necessary for career progress — with hands-on project work that lets you implement your new skills. The latter is a research project supervised by our academic staff and in some cases, industry professionals, and allows you to solve problems directly relevant to industry. It is also available for part-time study.

auckland.ac.nz/online-mepm

Career opportunities

Many of our postgraduate study options are designed to supplement the technical knowledge enabled by an engineering background, so your specialisation tends to determine your career path. However, many students who have undertaken postgraduate study have gone into roles that involve policymaking, planning, evaluating, designing, maintaining and operating engineering products and infrastructure. In some cases, a postgraduate qualification gives you a unique edge in niche industries. Further study at postgraduate level also confirms your ability to tackle important issues with skills in research and critical analysis, which are marketable qualities that can widen career options and general employability for any professional. Many students who are already working professionals also pursue our postgraduate programmes to contribute to their career progression into management or leadership roles.

**Diverse,
world-class
research and
technology towards
a bolder future**

Find out more
engineering.auckland.ac.nz

“I believe doctoral research will help me broaden my horizons in the interface between Māori culture and environmental engineering.”

Nona is a PhD candidate in Environmental Engineering. His thesis aims to facilitate more efficient collaboration between Māori communities and non-Māori parties to utilise and develop geothermal resources.

“As a member of Te Ārawa and Tainui iwi, I am regularly engaging with various members of Te Ārawa and Ngāti Tūwharetoa hapū and obtaining historical and cultural mōhiotanga (knowledge) of Māori communities' spiritual and physical links with geothermal resources in the central North Island. I also explore the different worldviews associated with geothermal development to pursue holistic decision-making and ensure cultural, environmental, social, and economic sustainability.”

“Within geothermal development, Māori communities are under-benefited, and with little sustainability, our Te Ārawa and Tūwharetoa people are at risk of losing the very gift that our ancestors have thrived with for hundreds of years.”

“I am originally from Rotorua where I was immersed in Māori culture and language, and utilised geothermal resources as a member of the local community. By combining my cultural heritage with an education from a western engineering institute, I have the ability to help facilitate sustainable change and increase cultural awareness in the engineering space for our people.”

“I hope to raise our younger generation's awareness of past, present and future issues that Māori communities may face if the current direction of geothermal utilisation continues.”

Nona Hohepa-Taute

Nona is a PhD candidate in Environmental Engineering. He is a recipient of a Ngāti Māhino Iwi Authority scholarship and GNS Science Doctoral Research Award.



Watch Nona speak about his postgraduate experience at auckland.ac.nz/gradvids

Postgraduate programmes	Taught	Research	Online	Time to complete (full-time study)	Part-time study ¹	International students ¹
Postgraduate Certificate in Aerospace Engineering (PGCertAerospaceEng)	✓	✗	✗	6 months	✗	✓
Postgraduate Diploma in Aerospace Engineering (PGDipAerospaceEng)	✓	✗	✗	1 year	✗	✓
Master of Aerospace Engineering (MAerospaceEng)	✓	✓	✗	Varies	✗	✓
Postgraduate Certificate in Earthquake Engineering (PGCertEqEng)	✓	✗	✗	6 months	✗	✓
Master of Earthquake Engineering (MEqEng)	✗	✓	✗	1 year - 18 months	✗	✓
Postgraduate Certificate in Engineering (PGCertEng)	✓	✗	✗	6 months	✓	✓
Postgraduate Diploma in Engineering (PGDipEng)	✓	✗	✗	1 year	✓	✓
Master of Engineering (ME)	✓	✓	✗	1 year - 18 months	✓	✓
Master of Engineering Management (MEMgt)	✗	✗	✗	1 year	✓	✓
Postgraduate Certificate in Engineering Project Management (PGCertEPM)	✓	✗	✗	6 months	✓	✓
Postgraduate Certificate in Engineering, Sustainable Resource Recovery specialisation (PGCertEng)	✓	✗	✗	6 months	✓	✓
Postgraduate Diploma in Engineering, Sustainable Resource Recovery specialisation (PGDipEng)	✓	✗	✗	1 year	✓	✓
Master of Engineering Studies in Sustainable Resource Recovery (MEngSt)	✓	✗	✗	Varies	✓	✓
Master of Engineering Studies (MEngSt)	✓	✓	✗	1 year - 18 months	✓	✓
Postgraduate Certificate in Geothermal Energy Technology (PGCertGeothermTech)	✓	✗	✗	6 months	✓	✓
Postgraduate Certificate in Infrastructure Asset Management (PGCertInfraAssetMgt)	✓	✗	✗	6 months	✓	✓
Postgraduate Diploma in Infrastructure Asset Management (PGDipInfraAssetMgt)	✓	✗	✗	1 year	✓	✓
Master of Infrastructure Asset Management (MInfraAssetMgt)	✓	✓	✗	1 year - 18 months	✓	✓
Postgraduate Certificate in Materials Engineering (PGCertMaterialsEng)	✓	✗	✗	6 months	✗	✓
Postgraduate Diploma in Materials Engineering (PGDipMaterialsEng)	✓	✗	✗	1 year	✓	✓
Master of Materials Engineering (MMaterialsEng)	✓	✓	✗	1 year - 18 months	✓	✓
Postgraduate Certificate in Medical Engineering (PGCertMedicalEng)	✓	✗	✗	6 months	✓	✓
Postgraduate Diploma in Medical Engineering (PGDipMedicalEng)	✓	✗	✗	1 year	✓	✓
Master of Medical Engineering (MMedicalEng)	✓	✗	✗	1 year - 18 months	✓	✓
Postgraduate Certificate in Robotics and Automation Engineering (PGCertRobotEng)	✓	✗	✗	6 months	✗	✓
Postgraduate Diploma in Robotics and Automation Engineering (PGCertRobotEng)	✓	✗	✗	1 year	✗	✓
Master of Robotics and Automation Engineering (MRobotEng)	✓	✗	✗	Varies	✗	✓
Interfaculty degrees and diplomas						
Postgraduate Certificate in Operations Research and Analytics (PGCertORAn)	✓	✗	✗	6 months	✓	✓
Postgraduate Diploma in Operations Research and Analytics (PGDipORAn)	✓	✗	✗	1 year	✓	✓
Master of Operations Research and Analytics (MORAn)	✓	✓	✗	1 year - 18 months	✓	✓
Master of Energy (MEnergy)	✓	✓	✗	1 year - 18 months	✓	✓
Master of Engineering Geology (MEngGeol)	✗	✓	✗	Varies	✓	✓
Master of Engineering Project Management (MEPM)	✓	✗	✓	1 year - 18 months	✓	✓
Master of Engineering Project Management, Health Projects specialisation (MEPM-H)	✓	✗	✗	1 year	✗	✓

Points required	Start		More information
	Semester One	Semester Two	
60	✓	✓	auckland.ac.nz/pgcertaerospaceeng
120	✓	✓	auckland.ac.nz/pgdipaerospaceeng
120 or 180	✓	✓	auckland.ac.nz/maerospaceeng
60	✓	✓	auckland.ac.nz/pgcerteqeng
120 or 180	✓	✓	auckland.ac.nz/meqeng
60	✓	✓	auckland.ac.nz/pgcerteng
120	✓	✓	auckland.ac.nz/pgdipeng
120 or 180	✓	✓	auckland.ac.nz/me
120	✓	✓	auckland.ac.nz/memgt
60	✓	✓	auckland.ac.nz/pgcertepm
60	✓	✓	auckland.ac.nz/srr
120	✓	✓	auckland.ac.nz/srr
120 or 180	✓	✓	auckland.ac.nz/srr
120 or 180	✓	✓	auckland.ac.nz/mengst
60	✗	✓	auckland.ac.nz/pgcertgeothermtech
60	✓	✓	auckland.ac.nz/pgcertinfraassetmgt
120	✓	✓	auckland.ac.nz/pgdipinfraassetmgt
120 or 180	✓	✓	auckland.ac.nz/minfraassetmgt
60	✓	✓	auckland.ac.nz/pgcertmaterialseng
120	✓	✓	auckland.ac.nz/pgdipmaterialseng
120 or 180	✓	✓	auckland.ac.nz/mmaterialseng
120	✓	✓	auckland.ac.nz/pgcertmedicaleng
120	✓	✓	auckland.ac.nz/pgdipmedicaleng
120 or 180	✓	✓	auckland.ac.nz/mmedicaleng
60	✓	✓	auckland.ac.nz/pgcertroboteng
120	✓	✓	auckland.ac.nz/pgdiproboteng
120 or 180	✓	✓	auckland.ac.nz/mroboteng
60	✓	✓	auckland.ac.nz/pgcertoran
120	✓	✓	auckland.ac.nz/pgdiporan
120 or 180	✓	✓	auckland.ac.nz/moran
120 or 180	✓	✓	auckland.ac.nz/menergy
120 or 180	✓	✓	auckland.ac.nz/menggeol
120 or 180	✓	✓	auckland.ac.nz/mepm
120	✓	✓	auckland.ac.nz/mepmh

Find notes on pg. 48-49.

“If you are thinking about completing a Master of Laws, you won’t regret obtaining it from Auckland Law School.”

“When I finished my undergraduate studies at the University of Auckland, I went into practice specialising in Equity Capital Markets; first with Chapman Tripp in Auckland and then with Allen & Overy in Sydney.

“Practising law fulfilled me on many levels. However, the nature of private practice does not often afford the opportunity to deeply explore an issue beyond the core legal problem. That’s why I knew I wanted to do postgraduate study.

“As a student with a visual impairment disability, I wanted to study at a world-leading institution that I knew would support me. Auckland Law School was naturally the ideal choice as New Zealand’s leading law school.

“My research considered whether people suffering an incurable psychiatric illness should be eligible for assisted dying in New Zealand. In my role, I am confronted by the psychological suffering of New Zealanders from all walks of life. My research has drastically expanded my knowledge of psychiatric illnesses and how those who suffer from them are treated by the law.

“My role is to assist the Chief Coroner and Coroners of New Zealand with delivering the highest quality decisions to families who have tragically lost a loved one in order to make New Zealand a safer place for all.

“There are not many jobs where I can be a detective, a medical examiner and a judicial officer at the same time. My role is intellectually and personally rewarding, as I know that I am helping to speak for those who cannot.”

Kieran Berry

Kieran is a Master of Laws graduate, who works as Legal and Research Counsel for the Office of the Chief Coroner. He is a recipient of the University of Auckland Dean’s Law Award.



Watch Kieran speak about his postgraduate experience at auckland.ac.nz/pg-stories



Law

Auckland Law School offers the largest range of postgraduate law programmes in New Zealand. We are committed to improving access to justice through excellence in teaching, research, service and engagement.

Postgraduate programmes offered by Auckland Law School include the Doctor of Philosophy (PhD), Master of Laws (LLM), Master of Legal Studies (MLS), Master of Taxation Studies (MTaxS) and a Postgraduate Certificate in Law (PGCertLaw).

Our postgraduate programmes can be undertaken by coursework, research or a combination of both. With over 30 taught courses to choose from you can concentrate your study in particular areas of specialisation or study a broad range of legal subjects.

Postgraduate specialisations

Specialisation is optional but you can choose to have your LLM or MLS awarded in one of our six specialisation areas: Corporate and Commercial Law, Environmental Law, Human Rights Law, International Law, Litigation and Dispute Resolution or Public Law.

For more detailed information, see our postgraduate specialisations page.

law.auckland.ac.nz/specialisations

Flexible study

We understand that personal, family and work commitments are important factors when deciding whether to study, so we offer options to fit with your lifestyle:

- Full-semester courses taught in the early evening once a week
- Half-semester courses taught for six weeks of the semester in the early evening once a week
- Intensively-taught courses over three to five days (usually incorporating a weekend break, ie Weds, Thurs, Fri, Mon, Tue)
- Independent research programmes.

Research strengths

Auckland Law School has a strong international reputation for research. We currently have six research centres:

- The Aotearoa New Zealand Centre for Indigenous Peoples and the Law
- The New Zealand Centre for Environmental Law
- The New Zealand Centre for Human Rights Law, Policy and Practice
- The New Zealand Centre for Information and Communications Technology Law
- The New Zealand Centre for Law and Business
- The New Zealand Centre for Legal Theory

Our broad range of research areas include:

- Contract, torts, equity and other areas of private law
- Corporate and commercial law
- Criminal law and justice
- Family and relationships law and policy
- Indigenous peoples and the law
- International and comparative law
- Land and environmental law
- Legal history and theory
- Litigation and dispute resolution
- Public law, including constitutional and administrative law
- Tax and regulations

Career opportunities

A postgraduate qualification from Auckland Law School will form an important step in your career. Investing in postgraduate study will broaden your academic, research and employment horizons while adding value with specialist skills and knowledge.

Largest range of postgraduate courses in New Zealand

Find out more

law.auckland.ac.nz/pg-study

Postgraduate programmes	Taught	Research	Time to complete (full-time study)	Part-time study ¹	International students ¹
Postgraduate Certificate in Law (PGCertLaw)	✓	X	1 semester	✓	✓
Master of Laws (LLM)	✓	✓	1 year	✓	✓
Master of Legal Studies (MLS)	✓	✓	1 year or 18 months	✓	✓
Master of Taxation Studies (MTaxS)	✓	✓	1 year or 18 months	✓	✓
Doctor of Philosophy (PhD)	X	✓	3–4 years	✓	✓

Points required	Start			More information
	Semester One	Semester Two	1 December ²	
60	✓	✓	X	auckland.ac.nz/pgcertlaw
120	X	✓	✓ ²	auckland.ac.nz/llm
120 or 180	✓	✓	✓ ²	auckland.ac.nz/mls
120 or 180	✓	✓	✓ ²	auckland.ac.nz/mtaxs
Thesis ³	Begin at any time			lawfellowship.ac.nz

Find notes on pg. 48-49.



Medical and Health Sciences

Our postgraduate programmes have been designed to meet the needs of those aspiring to, or are already involved in, academic, clinical and professional medical and health careers. Whether your goal is to further your learning through taught courses or undertake ground-breaking research, our faculty offers you a wide range of subjects, programmes and courses.

We are a large and diverse faculty committed to improving the health of our local, national and global communities through excellence in teaching, research and service. At the cutting edge of research, we work at the commercial biotechnology interface, in the clinical care setting and the community.

Our postgraduate programmes have been designed to meet the needs of people aspiring to be, or are already involved in, academic, clinical and professional medical and health careers. We offer our students both research and taught programmes, spanning more than 50 different subjects. We have almost 30 programmes on offer, from postgraduate certificates and diplomas to doctoral-level research. Experts in their field teach our programmes and give you the skills and knowledge to work at a high level in the healthcare industry.

We encourage our students to make the most of their postgraduate study at our specialised medical and health sciences campus, based in Grafton near the Auckland Hospital. As well as access to some of the world's best research and researchers, you can also take advantage of the many opportunities to engage, socialise and collaborate with your fellow students through the FMHS Postgraduate Student Association.

Our faculty also offers postgraduate programmes that are entirely online or completed mostly remotely, with a few block courses for teaching for prospective students currently working or residing outside of Auckland.

Research strengths

Our postgraduate students are a significant part of the research drive and outputs of the faculty and the wider University. Our graduates are increasingly finding their niches in other prestigious international research institutes, including the universities of Cambridge and Oxford, UCLA, Burnham Institute and Harvard. Some of our research centres and groups where postgraduate students can participate in ongoing research:

- Auckland Cancer Society Research Centre (ACSRC)
- Centre for Addiction Research (CFAR)
- Centre for Brain Research (CBR)
- Centre for Longitudinal Research – He Ara ki Mua
- Manaaki Mānawa Centre for Heart Research
- National Institute for Health Innovation (NIHI)
- New Zealand National Eye Centre (NZ-NEC)
- Surgical and Translational Research Centre (STaR)
- Tōmaiora – Māori Health Research Group
- Werry Centre for Child and Adolescent Mental Health

Māori and Pacific Postgraduate Support Services

MAPAS Postgraduate Support provides a supportive environment where students, whānau and staff accept a commitment to academic achievement within a Māori and Pacific context.

MAPAS Postgraduate Support offers a variety of resources, activities and opportunities for students to utilise during their postgraduate study.

To find out more and to check if you're eligible to access MAPAS postgraduate support, see:

fmhs.auckland.ac.nz/mapas-pg-support

Career opportunities

Our graduates are strengthening the country's health workforce and medical research spaces in various roles, from clinical care and scientific research to health policy, education and promotion. Many obtain senior roles within hospitals and healthcare centres, while others work internationally with globally competitive research groups and biotechnology industries or find positions within pharmaceutical and health promotion agencies.

Career progression

Postgraduate study may allow you to progress in your current field, or it may allow you to enter a different area of the health workforce. If you're considering switching or accelerating your career options in healthcare, we have study options on offer that are open to applicants from various professional and academic backgrounds. These programmes prepare graduates for a range of clinical and non-clinical roles and welcome applications from diverse undergraduate study backgrounds.

fmhs.auckland.ac.nz/career-progression



Find out more
fmhs.auckland.ac.nz/pg



“The things I have learnt throughout my experience at UoA have changed me as a person.”

“My perspective has developed so much since being here and I'm very grateful for the opportunity to continuously grow, not only academically as a student but also as a person in general.

“Vision 20:20 has created an environment where I feel safe and comfortable. It also offers tutorials, study spaces and other activities outside of mainstream services that have really supported me academically and culturally.

“I grew up in a predominantly white area, so to be given the opportunity to be surrounded by people who look like me and who share similar values is something I am very thankful for. The support I have received from MAPAS, Hikitia Te Ora and Whakapiki Ake staff and peers throughout my time has contributed to me still being here and pursuing a career in health”.

“I really like the fact that I am able to specialise in a particular area that I am interested in e.g. clinical quality and safety. I think this gives me the opportunity to be more intentional with my learning, where I can focus on aspects of health that I am interested in and where I hope to be of impact after completing my studies.

“The relationships that I have built throughout my time at UoA have been what has kept me going when times get rough. I think it is important to surround yourself with people who will help you develop both as a person and as a student.”

Alesha Nathan Ngāpuhi Kolofo'ou (Tonga)

Vision 20:20 (Whakapiki Ake (Māori recruitment), MAPAS (Māori and Pacific Admission Scheme), Hikitia Te Ora – Certificate in Health Sciences – (CertHSc))

Graduate: Hikitia Te Ora – Certificate in Health Sciences – (CertHSc), Bachelor of Health Sciences (BHSc)

Student: Master of Health Leadership

Medical and Health Sciences

Postgraduate programmes	Taught	Research	Time to complete (full-time study)	Part-time study ¹	International students ¹	Points required	Start			More information
							Semester One	Semester Two	1 December ²	
Bachelor of Biomedical Science (Honours) (BBiomedSc(Hons))	X	✓	1 year	✓	✓	120	✓	X	X	auckland.ac.nz/bbiomedsc-hons
Bachelor of Health Sciences (Honours) (BHSc(Hons))	✓	X	1 year	✓	✓	120	✓	X	X	auckland.ac.nz/bhsc-hons
Bachelor of Medical Science (Honours) (BMedSc(Hons))	X	✓	1 year	X	✓	120	✓	X	X	auckland.ac.nz/bmedsc-hons
Bachelor of Nursing (Honours) (BNurs(Hons)) ²⁰	✓	X	1 year	✓	✓	120	✓	X	X	auckland.ac.nz/bnurs-hons
Bachelor of Science (Honours) (BSc(Hons)) - Pharmacology/Physiology	✓	X	1 year	✓	✓	120	✓	X	X	auckland.ac.nz/bsc-hons
Diploma in Paediatrics (DipPaed) ⁶	✓	X	1 year	X	X	120	✓	X	X	auckland.ac.nz/dippaed
Postgraduate Certificate in Clinical Education (PGCertClinEd)	✓	X	1 semester	✓	✓	60	✓	✓	X	auckland.ac.nz/pgcertclined
Postgraduate Certificate in Clinical Pharmacy (PGCertClinPharm) ¹⁷	✓	X	Part-time only	✓	X	60	✓	X	X	auckland.ac.nz/pgcertclinpharm
Postgraduate Certificate in Health Sciences (PGCertHSc)	✓	X	1 semester ¹⁵	✓	✓	60	✓	✓	X	auckland.ac.nz/pgcerthsc
Postgraduate Certificate in Stroke Care	✓	X	Part-time only	✓	✓	60	✓	✓	X	auckland.ac.nz/online-pgcertstrokecare
Postgraduate Diploma in Biomedical Science (PGDipBiomedSc)	✓	X	1 year	✓	✓	120	✓	✓	X	auckland.ac.nz/pgdipbiomedsc
Postgraduate Diploma in Clinical Education (PGDipClinEd)	✓	X	1 year	✓	✓	120	✓	✓	X	auckland.ac.nz/pgdipclined
Postgraduate Diploma in Clinical Pharmacy (PGDipClinPharm) ¹⁷	✓	X	Part-time only	✓	X	120	✓	✓ ¹⁸	X	auckland.ac.nz/pgdipclinpharm
Postgraduate Diploma in Health Psychology (PGDipHealthPsych) ¹⁹	✓	X	2 years	✓	X	150	✓	X	X	auckland.ac.nz/pgdiphealthpsych
Postgraduate Diploma in Health Sciences (PGDipHSc)	✓	X	1 year ¹⁴	✓	✓	120	✓	✓	X	auckland.ac.nz/pgdiphsc
Postgraduate Diploma in Obstetrics and Medical Gynaecology (PGDipObstMedGyn) ¹⁶	✓	X	1 year	✓	X	120	✓	X	X	auckland.ac.nz/pgdipobstmedgyn
Postgraduate Diploma in Public Health (PGDipPH)	✓	X	1 year	✓	✓	120	✓	✓	X	auckland.ac.nz/pgdipph
Postgraduate Diploma in Science (PGDipSci) - Optometry/Pharmacology/Physiology	✓	X	1 year	✓	✓	120	✓	✓	X	auckland.ac.nz/pgdipsci
Postgraduate Diploma in Stroke Care	✓	X	Part-time only	✓	✓	120	✓	✓	X	auckland.ac.nz/online-pgdipstrokecare
Master of Audiology (MAud)	X	✓	2 years	X	✓	240	✓	X	X	auckland.ac.nz/maud
Master of Biomedical Science (MBiomedSc)	X	✓	1 or 2 years	✓	✓	120 or 240	✓	✓	✓	auckland.ac.nz/mbiomedsc
Master of Clinical Education (MClined)	✓	✓	1 or 2 years	✓	✓	120 or 240	✓	✓	✓	auckland.ac.nz/mclined
Master of Clinical Pharmacy (MClinPharm) ¹⁷	X	✓	1 or 2 years	✓	X	120 or 240	✓	✓	✓	auckland.ac.nz/mclinpharm
Master of Health Leadership (MHLthLd)	✓	X	1 year or 18 months	✓	✓	120 or 180	✓	✓	X	auckland.ac.nz/mhlthld
Master of Health Practice (MHLthPrac)	✓	X	1 year or 18 months	✓	✓	120 or 180	✓	✓	X	auckland.ac.nz/mhlthprac
Master of Health Psychology (MHealthPsych)	X	✓	2 years	✓	✓	240	✓	X	X	auckland.ac.nz/mhealthpsych
Master of Health Sciences (MHSc)	✓	✓	1 or 2 years	✓ ¹⁵	✓	120 or 240	✓	✓ ⁴	✓ ²	auckland.ac.nz/mhsc
Master of Nursing (MNurs) ²⁰	✓	✓	1 or 2 years	✓	X	120 or 240	✓	✓	✓ ²	auckland.ac.nz/mnurs
Master of Nursing Practice (MNursPrac)	✓	X	1 year or 18 months	✓	✓	120 or 180	✓	✓	X	auckland.ac.nz/mnursprac
Master of Nursing Science (MNSc)	✓	X	2 years	X	✓	240	✓ ²³	X	TBA	auckland.ac.nz/mnsc
Master of Public Health (MPH)	✓	✓	1 or 2 years	✓	✓	120 or 240	✓	✓	✓ ²	auckland.ac.nz/mph
Master of Science (MSc) - Optometry/Pharmacology/Physiology	✓ ²¹	✓	1 or 2 years	✓	✓	120 or 240	✓	✓	✓ ²	auckland.ac.nz/msc
Master of Stroke Care	✓	X	Part-time only	✓	✓	180	✓	✓	X	auckland.ac.nz/newprogrammes
Doctor of Health Sciences	First 120 points	Remaining 240 points	Part-time study with full-time option for research component	✓	✓	360 (including 240 point thesis)	✓	✓	X	auckland.ac.nz/dhsc
Doctor of Medicine (MD)	X	✓	3-4 years	✓	✓	Thesis ⁵	Begin at any time			auckland.ac.nz/md
Doctor of Philosophy (PhD)	X	✓	3-4 years	✓	✓	Thesis ⁵	Begin at any time			auckland.ac.nz/phd

Science

The Faculty of Science is New Zealand's largest science faculty producing cutting-edge research across ten schools and departments. Students have access to high quality laboratory and field research facilities, including our recently developed \$200 million Science Centre building. The breadth of scientific research is diverse and a variety of outstanding research-based and tuition-based postgraduate qualifications are available.

Science plays a vital role in addressing the key issues that confront us and future generations. The University demonstrated this in spades recently, contributing significantly to New Zealand's successful response to Covid-19. It was also appointed in 2020 as the official hub for Sustainable Development Goal 4, Quality Education, by the United Nations Academic Impact.

We provide a rich research environment for our students. Our faculty benefits from strong collaborations within the global academic community. We have five science subjects ranked in the World Top 100 and 11 subjects ranked first in New Zealand*. Our relationships with commercial industry are an important aspect of scientific research and innovation, and we are proud of our significant links to the Crown Research Institutes of New Zealand.

The faculty also hosts two of the ten national centres of Research Excellence (CoREs), the Maurice Wilkins Centre and Te Pūnaha Matatini. The Maurice Wilkins Centre for Molecular Biodiscovery is a multidisciplinary network that brings together leading biologists, chemists and computer scientists from around the country to target major human diseases with a focus on cancer, metabolic disease and infectious disease.

Te Pūnaha Matatini – 'the meeting place of many faces' – brings together experts from across New Zealand to develop methods and tools for transforming complex data about the environment, economy, and society into knowledge, tools and insight for better decision making. The centre, which involves nearly 80 investigators, has played a leading role in New Zealand's Covid-19 response – providing timely science-based modelling research used to inform government policy.

*QS World University Rankings By Subject 2022

Research strengths

Our eight interdisciplinary research themes focus our thinking on how we can best advance knowledge to serve local, regional and global society. Our research-intensive environment nurtures graduates who are able to articulate and challenge established knowledge, and who are equipped with the skills to reshape our world.

- **KNOWLEDGE SCIENCES:** Focuses on the representation, modelling, communication and processing of ideas and information, ranging from abstract foundations to concrete designs and representations in computers and in the human mind.
- **OUR WORLD AND UNIVERSE:** Seeks to advance our understanding of our planet and universe, utilising the nation's access to space and related resources to further fundamental and applied science.
- **AROHA ATU, AROHA MAI – SCIENCE IN SOCIETY:** Focuses on connecting our science to Aotearoa and the world.
- **HEALTHY PEOPLE, HEALTHY COMMUNITIES:** Focuses on understanding human diseases, human disorders and their causes and treatments.
- **FOOD, FOOD PRODUCTION AND NUTRITION:** Focuses on food, from farm to plate.
- **A SUSTAINABLE FUTURE:** Focuses on the sustainability of our terrestrial, marine and freshwater environments, our climate, and human resilience.
- **FUTURE MATERIALS AND TECHNOLOGIES:** Focuses on advanced materials and processes to create a better future.
- **COMPUTATIONAL BIOLOGY:** Focuses on molecular and computational analysis and understanding of biological systems, spanning the sub-cellular through to population level dynamics.

Career opportunities

Graduates from our postgraduate programmes are highly sought after in a wide variety of careers. Many go on to become researchers and educators at universities across the world. Others are sought after as subject-matter experts in government and policy, well-known international companies, charities, and some make the leap into consultancy or entrepreneurship. Whether you are seeking to boost your career opportunities or pursue a completely new course in life, the Faculty of Science offers a supportive environment and a range of academically challenging science programmes to help you meet your goals. To find out more about career paths our graduates have embarked on, read our graduate stories: science.auckland.ac.nz/graduate-stories

Study 100% online

Explore our 100% online postgraduate programmes in Applied Psychology and Information Technology.

Graduate Diploma in Applied Psychology

GradDipAppPsych

This is an intensive part-time programme that will provide you with a foundational knowledge of psychology to either advance your current career or lead towards postgraduate study.

auckland.ac.nz/online-graddipapppsych

Postgraduate Certificate in Information Technology

PGCertInfoTech

Designed for students with a non IT-related bachelor's degree, the Postgraduate Certificate in Information Technology will teach you the specialist skills you need to kick-start your IT career. This programme is also available to study on campus.

auckland.ac.nz/online-pgcertinfotech

Choose from over 40 postgraduate subjects to personalise your degree

Find out more science.auckland.ac.nz/pg-study-options



“This PhD will allow me to straddle the line between academia and industry, bridging the gap between high-quality research output and industrial application.”

“I’ve always been concerned about the effect we as humans have on the environment, especially how we treat highly toxic waste.”

“After completing my chemistry degree (BSc Honours) in 2013, I decided to work for a year in industry before starting my PhD. One year in industry quickly became six and I realised that there was a huge gap between the high-quality research output of institutions and the industrial implementation of those ideas.”

“Pursuing a PhD has allowed me to progress the fundamental understanding of an emerging sector in chemistry, with the goal to directly inform treatment processes for toxic pollutants.”

“My area of research is centred around developing a novel and scalable technology, known as high-energy ball milling, to effectively destroy toxic chemicals at a molecular level.”

“This method is seen as a green solution for persistent pollutants as no hazardous by-products are generated by the process and there is no requisite for noxious solvents or large energy input, thereby providing a sustainable alternative to current industry practices.”

Kapish Gobindlal

Doctor of Philosophy in Chemistry



Hear more from our postgraduate students about their experience at UoA auckland.ac.nz/pg-stories

Postgraduate programmes	Taught only	Research and taught	Research only	Online	Time to complete (full-time study)	Part-time study ¹
Graduate Diploma in Applied Psychology (GradDipAppPsych)	✓	X	X	✓	Part-time only	✓
Bachelor of Science (Honours) (BSc(Hons))	X	✓	X	X	1 year	✓
Postgraduate Certificate in Information Technology (PGCertInfoTech)	✓	X	X	✓	1 semester	✓
Postgraduate Diploma in Applied Psychology (PGDipAppPsych)	✓	X	X	X	1 year	X
Postgraduate Diploma in Forensic Science (PGDipForensic)	✓	X	X	X	1 year	✓
Postgraduate Diploma in Science (PGDipSci)	✓	X	X	X	1 year	✓
Master of Biotechnology (MBiotech)	✓	X	X	X	18 months	✓
Master of Chemistry (MChem)	✓	✓	X	X	18 months	✓
Master of Data Science (MDataSci)	X	✓	X	X	1-2 years	✓
Master of Ecology (MEcol)	✓	✓	X	X	18 months	✓
Master of Environmental Management (MEnvMgt)	✓	✓	X	X	18 months	✓
Master of Environmental Science (MEnvSci)	X	✓	X	X	18 months	✓
Master of Food Science (MFoodSci)	✓	✓	X	X	18 months	✓
Master of Information Technology (MInfoTech)	✓	X	X	X	1-2 years	✓
Master of Marine Conservation (MMarineCons)	X	✓	X	X	1-2 years	✓
Master of Marine Studies (MMarineSt)	X	✓	X	X	18 months	X
Master of Mathematical Modelling (MMathModelling)	✓	✓	X	X	1 year or 18 months	X
Master of Organisational Psychology (MOrgPsych)	X	✓	X	X	18 months	X
Master of Physiotherapy Practice (MPhysioPrac)	✓	✓	X	X	2 years	X
Master of Science (MSc)	X ⁹	✓	✓	X	1 or 2 years	✓
Master of Speech Language Therapy Practice (MSLTPrac)	X	✓	X	X	2 years	X
Master of Wine Science (MWineSci)	X	✓	X	X	18 months	X
Doctor of Clinical Psychology (DClinPsy) ²³	X	✓	X	X	3 years	X
Doctor of Philosophy (PhD)	X	X	✓	X	3-4 years	✓
Interfaculty degrees and diplomas						
Postgraduate Diploma in Bioscience Enterprise (PGDipBioEnt)	✓	X	X	X	1 year	✓
Postgraduate Diploma in Operations Research and Analytics (PGDipORAn)	✓	X	X	X	1 year	✓
Master of Bioscience Enterprise (MBioEnt)	X	✓	X	X	1 year	✓
Master of Disaster Management (MDisMgt)	X	✓	X	X	1 year or 18 months	✓
Master of Engineering Geology (MEngGeol)	X	✓	X	X	1 year or 18 months	✓
Master of Operations Research and Analytics (MORAn)	X	✓	X	X	1 year	✓
Master of Professional Studies (MProfStuds) - Data Science/Digital Security/Mathematics Education	X	✓	X	X	1 year	✓

International students ¹	Points required	Start			More information
		Semester One	Semester Two	1 December ²	
✓	120	✓	X	X	auckland.ac.nz/graddipapppsych
✓	120	✓	✓ ⁴	X	auckland.ac.nz/bsc-hons
✓	60	✓	✓	X	auckland.ac.nz/pgcertinfotech
✓	120	✓	X	X	auckland.ac.nz/pgdipapppsych
✓	120	✓	X	X	auckland.ac.nz/pgdipforensic
✓	120	✓	✓	X	auckland.ac.nz/pgdipsci
✓	180	✓	✓	X	auckland.ac.nz/mbiotech
✓	180	✓	X	X	auckland.ac.nz/mchem
✓	180 or 240	✓	✓	X	auckland.ac.nz/mdatasci
✓	180	✓	✓	X	auckland.ac.nz/mecol
✓	180	✓	✓	X	auckland.ac.nz/menvmgt
✓	180	✓	✓	X	auckland.ac.nz/menvsci
✓	180	✓	X	X	auckland.ac.nz/mfoodsci
✓	120, 180 or 240	✓	✓	✓ ²⁵	auckland.ac.nz/minfotech
✓	180	✓	✓	X	auckland.ac.nz/mmarinecons
✓	180	✓	✓	X	auckland.ac.nz/mmarinest
✓	120 or 180	✓	✓	X	auckland.ac.nz/mmathmodelling
✓	180	✓	X	X	auckland.ac.nz/morgpsych
✓	240	✓	X	X	auckland.ac.nz/mphysioprac
✓	120 or 240	✓	✓	✓	auckland.ac.nz/msc
✓	240	✓	X	X	auckland.ac.nz/msltprac
✓	180	✓	✓	X	auckland.ac.nz/mwinesci
X	360	✓	X	X	auckland.ac.nz/dclinpsy
✓	Thesis ⁵	Begin at any time			science.auckland.ac.nz/phd
✓	120	✓	✓ ⁷	X	auckland.ac.nz/pgdipbioent
✓	120	✓	✓	X	auckland.ac.nz/pgdipor
✓	120	✓	X	✓ ²	auckland.ac.nz/mbioent
✓	120 or 180	✓	✓	X	auckland.ac.nz/mdismgt
✓	120 or 180	✓ ²⁴	✓	X	auckland.ac.nz/menggeol
✓	120	✓	✓	✓ ²	auckland.ac.nz/mor
✓	120	✓	✓	✓ ²	science.auckland.ac.nz/data-science science.auckland.ac.nz/digital-security science.auckland.ac.nz/math-education

“The opportunities here are vast, particularly at the Auckland Bioengineering Institute. It really is the best place in New Zealand to cut your teeth in the bioengineering space.”

Laura is researching the design and development of an intravaginal medical device (femfit®) for women's pelvic floor muscle health.

“When I heard about this project it was a no-brainer. Women in engineering, as well as women's health research, are both typically underrepresented for a number of reasons. We need more women in this space to advance research for women.”

“As a female engineer who is researching women's health, I can be part of the change to make a difference and get better health outcomes for women.”

“When you realise you can make such a difference to someone's life, it really propels you to do better and keep persisting on the long pathway for medical device approval and commercialisation. That is the long term goal: to get our technology (femfit®) to women in the community.”

Laura Pedofsky

Laura Pedofsky is in the final year of a PhD in Bioengineering.

Auckland Bioengineering Institute

The ABI is a world-leading research institute that aims to improve the diagnosis and treatment of a range of medical conditions and improve the lives of people with disabilities or injuries. For the past 20 years, we have been breaking boundaries in bioengineering - our focus on research excellence, clinical application, and entrepreneurship is making a difference to society and to the New Zealand economy.

Our research deals with the application of mathematical and engineering sciences to biology and human physiology - we aim to improve understanding of physiological processes and the diagnosis and treatment of injury or disease. We have world-class researchers working on projects that range from artificial intelligence avatars to implantable devices, to 3D models of human physiology.

The ABI is a cross-faculty research institute - many of our staff have joint appointments in other faculties at the University of Auckland, especially with the Department of Engineering Science in the Faculty of Engineering and the Department of Physiology in the Faculty of Medical and Health Sciences.

We are a melting pot of a great number of disciplines - including biological sciences, computer science, mathematics physiology and of course engineering. Our academics and students come from over 50 different countries and a wide range of backgrounds, which fosters a very creative environment. Much of our research is already entering the clinical workflow, and we have a wide range of commercial activities that are based on our research - the ABI has established many successful spin-out companies over the years, and we support entrepreneurial activities by our PhD students and postdoctoral fellows.

The ABI has many long-standing international collaborations with universities, companies and organisations around the world.

Research strengths

- World leaders in computational modelling of the human body
- Innovative medical devices and instrumentation
- Biomimetics and augmented human technologies

- Engineering for clinical technologies
- Internationally-recognised researchers and world-class facilities
- Get support to develop commercial opportunities based on our research, such as spin-out companies
- Attend national and international conferences to network and expand learning
- Benefit from a range of financial scholarships and grants available only at Auckland Bioengineering Institute

Career opportunities

Our graduates have been employed in a wide range of careers both in New Zealand and overseas. There are opportunities for our graduates in professional Biomedical Engineering roles, data analytics, research and in spin-out companies. Our graduates have been employed by leading companies such as Fisher & Paykel Healthcare, Orion Health and Rocket Lab, as well as our own startups Soul Machines, StretchSense, The Insides Company, Alimetry, Formus Labs and PowerOn.

**20 years
of breaking
boundaries in
bioengineering
from 2001-
2021**

Find out more
abi.auckland.ac.nz

Liggins Institute

The Liggins Institute is a world-leading research institute at the University of Auckland. We are committed to improving lifelong health through excellent research into mothers, pregnancy and early childhood. Events prior to, during and after pregnancy can influence the types of diseases an infant may develop in later life. The Liggins Institute focuses its research on understanding these mechanisms in order to reduce the risk of disease onset. Our goal is to give every baby a healthy start for a healthy life.

From cellular research to clinical trials, we take a collaborative and transdisciplinary approach to research. This enables us to view health problems from different angles and to explore the therapies and interventions that have the biggest impact on lifelong health. Our students are critical to this - their research helps to identify the factors that contribute to good health and disease. For example, working out the best nutrition for preterm babies or investigating the role our genes play in the development of diseases like diabetes and obesity. Join us and you will contribute both to health knowledge and the delivery of healthcare that informs the best possible outcomes for the people of Aotearoa New Zealand and the wider world.

Research strengths

Determinants of a healthy life

We look at the role of our genes and the way DNA works to understand why and how diseases such as type 1 diabetes, Parkinson's, Huntington's and complex diseases such as obesity develop.

Healthy mothers, healthy babies

We undertake clinical trials with pregnant women and their newborns to determine treatment and interventions to improve children's growth and development.

Nutrition for lifelong health

Nutrition affects long-term health and our response to disease in different ways; for example, the health of parents at conception can make a difference to their infant's development and diet at any time of life can impact on gut health and the microbiome.

Research to reality

The ability to translate our research findings into changes in clinical practice has a dramatic impact on health and wellbeing - whether that is implementing a new treatment, or stopping an intervention that isn't working.

Support and facilities

As a postgraduate student, you will be an integral part of the Liggins family, with the opportunity to contribute to all aspects of the Institute's work. You will have access to support in seeking research funding from public good, commercial and even philanthropic avenues, and the opportunity to disseminate your research widely, including to the public.

Take on research at the Liggins Institute and you will also benefit from our purpose-built facilities including a state-of-the-art laboratory, family-friendly clinical research unit for studies in babies, children and adults, the University's Human Health Research Services platform and the University's Ngāpouri research farm platform, both hosted by the Liggins Institute.

The Liggins Institute has a number of scholarships and awards available for honours, masters and doctoral students. There may even be philanthropic funding available if you don't meet the criteria for a University of Auckland scholarship.

**Turning
research into
reality to make a
difference for all
mothers and
babies**

Find out more
liggins.auckland.ac.nz

Dr Simone Watkins was born in Auckland, and her father is from the village of Mo'ototua in Sāmoa. After completing a Bachelor of Medicine and Bachelor of Surgery at the University of Auckland in 2011 she went on to train and work as a paediatric doctor. Now she's back as a doctoral student at the Liggins Institute. Simone's PhD is funded by a Health Research Council grant.

“I am investigating why outcomes for babies born with life-threatening heart conditions in New Zealand differ by ethnicity. I am gathering and assessing sets of data relating to these babies and their mothers, as well as interviewing whānau and staff involved in caring for them. The overarching research goal is to improve equity of health outcomes for babies born with serious heart conditions in New Zealand. However, my hope is that the information gathered from my thesis can be applied in a wider setting to inform equitable healthcare policies and systems beyond Aotearoa.”

“The Liggins Institute is a well-established research unit with an impressive track record of high achieving PhD students. It equips me with the tools I need to develop as a student and meet my full potential. I feel confident with the oversight from my lead supervisor, who genuinely cares about my research topic and completely understands the doctoral student journey. The Liggins Institute also has an inclusive, friendly and diverse student culture which I enjoy.”

Dr Simone Watkins



Auckland Bioengineering Institute

abi.auckland.ac.nz

Postgraduate programmes	Taught	Research	Time to complete (full-time study)	Part-time study ¹	International students ¹
Master of Engineering (ME) – Bioengineering	X	✓	1 year or 18 months	✓	✓
Doctor of Philosophy (PhD)	X	✓	3–4 years	✓	✓

Points required	Start			2022 estimated annual tuition fee for domestic students (NZ\$) ³	2022 estimated annual tuition fee for international students	More information
	Semester One	Semester Two	1 December ²			
120 or 180	✓	✓	✓ ²	\$10,122.00–\$10,831.20	\$46,688.40 ³	auckland.ac.nz/me
Thesis ⁵	Begin at any time			\$7,454.40	\$7,454.40 ⁶	auckland.ac.nz/phd

Liggins Institute

liggins.auckland.ac.nz

Postgraduate programmes	Taught	Research	Time to complete (full-time study)	Part-time study ¹	International students ¹
Bachelor of Biomedical Science (Honours) BBiomedSc(Hons)	X	✓	1 year	✓	✓
Bachelor of Health Sciences (Honours) (BHSc(Hons))	✓	X	1 year	X	✓
Bachelor of Medical Science (Honours) (BMedSc(Hons))	X	✓	1 year	✓	✓
Bachelor of Science (Honours) (BSc(Hons))	✓	✓	1 year	✓	✓
Master of Biomedical Science (MBiomedSc)	X	✓	1 or 2 years	✓	✓
Master of Health Sciences (MHSc)	X	✓	1 or 2 years	✓ ¹⁵	✓
Master of Science (MSc)	✓	✓	1 or 2 years	✓	✓
Doctor of Medicine (MD)	X	✓	3–4 years	✓	✓
Doctor of Philosophy (PhD)	X	✓	3–4 years	✓	✓
Doctor of Health Sciences	First 120 points	Remaining 240 points	Part-time study with full-time option for research component	✓	✓

Points required	Start			2022 estimated annual tuition fee for domestic students (NZ\$) ³	2022 estimated annual tuition fee for international students	More information
	Semester One	Semester Two	1 December ²			
120	✓	✓	X	\$8,947.20–\$9,728.40	\$46,525.00–\$81,194.40	auckland.ac.nz/biomedsc-hons
120	✓	X	X	\$9,728.40	\$46,525.00–\$81,194.40	auckland.ac.nz/bhsc-hons
120	✓	X	X	\$8,947.20–\$9,728.40	\$46,525.00–\$81,194.40	auckland.ac.nz/bmedsc-hons
120	✓	✓ ⁴	X	\$8,395.20–\$9,728.40	\$46,752.00	auckland.ac.nz/bsc-hons
120 or 240	X	✓	✓	\$8,947.20–\$9,728.40	\$46,525.00–\$81,194.40	auckland.ac.nz/mbiomedsc
120 or 240	X	✓ ⁴	✓ ²	\$8,947.20–\$9,728.40	\$46,525.00–\$81,194.40	auckland.ac.nz/mhsc
120 or 240	✓	✓	✓	\$8,395.20–\$9,728.40	\$46,752.00	auckland.ac.nz/msc
Thesis ⁵	Begin at any time			\$7,454.40	\$46,688.40 ⁶	auckland.ac.nz/md
Thesis ⁵	Begin at any time			\$7,454.40	\$7,454.40 ⁶	auckland.ac.nz/phd
360 (including 240 point thesis)	✓	✓	X	TBC	TBC	auckland.ac.nz/dhsc

- Part-time study options are generally not available to international students on student visas. International students must be enrolled full-time to meet the requirements of their student visa.
- 1 December start available for 120-point research masters only, subject to supervisor availability.
- Based on annual tuition fees for full-time study of 120 points except: programmes that require 60 points to complete (the annual tuition fee for 60 points is shown); some one-year programmes offered by the Faculty of Education and Social Work require 150 or 160 points to complete (the annual tuition fee for the points required to complete these programmes is shown). Tuition fees are indicative only and the fees for 2023 will be set at the end of 2022. All students will also pay a student services fee. As an indication, this fee is \$979.20 for students undertaking a full-time load of 120 points in 2022. Students taking fewer than 120 points pay proportionately lower fees.
- Semester Two start may not be possible for all subjects/majors/specialisations and

- only if places are available.
- Upon the recommendation of the Academic Head and approval from the Board of Graduate Studies, a candidate may present a corpus of creative work for assessment with a written thesis, comprising an integrated whole.
- New international PhD students will be accorded domestic status for the purposes of tuition fees, subject to supervisory and residency requirements. A new international PhD student is defined as a foreign student enrolled for the first time in a Doctor of Philosophy programme at a New Zealand university. Note that to be eligible for the domestic fee, you must reside in New Zealand for the duration of your doctoral programme. However, you may undertake research activities overseas during your doctoral programme (for a cumulative total of no more than 12 months).
- Part-time only.
- Professional programme accredited by the relevant professional body.
- Programme starts on 8 December.

- Part-time study options are available by negotiation with the programme leader.
- After completing the initial two years of full-time study a candidate may apply for permission to continue as a part-time student.
- This programme will be offered every two years. The next intake will be 2024.
- Research option only available for Food Engineering and Medical Devices and Technologies specialisations.
- Full-time study may not be possible for all subjects/majors/specialisations.
- Part-time study may not be possible for all subjects/majors/specialisations and only if places are available.
- Must be registered with the Medical Council of New Zealand.
- Must be registered with the Pharmacy Council of New Zealand.
- Semester Two start may be possible subject to prior approval by the Head of Programme.

- Must have completed Master of Health Psychology.
 - Must be registered with the Nursing Council of New Zealand.
 - Taught option only available for Optometry.
 - This programme has a limited intake each year and is open to New Zealand and Australian citizens and permanent residents only.
 - Programme starts in early January.
 - Taught option available for a limited range of majors.
 - Late Year Term entry in November is only available for the 240 point programme.
 - Subject to CUAP approval.
- *Tuition fees will be charged at the respective rate for the subject.

“The academic staff at the University were excellent, supportive and practical. I immediately felt like I was a part of a welcoming community.”

“I found the most valuable skills I learnt at the University of Auckland were high-level academic thinking and meticulous research.

“I work in developing neonatal respiratory medical equipment. This involves everything from immersive hospital visits to conducting usability studies with neonatal nurses, and machining mould tools for prototype injection plastic manufacturing.

“The neonatal intensive care unit can be a very tense and emotional environment. I enjoy seeing the joy on nurses’ faces when the product I have helped design provides them with another tool to deliver better care for premature babies and their families.

“My degree set me up with the skills I need to translate robust qualitative research into product solutions, and the wider professional network to enable those solutions to drive change in healthcare delivery.

“I found the Faculty of Engineering to be quite flexible and encouraging when I told them about my intentions to make my masters dissertation a cross-faculty collaboration.

“This flexibility meant I was able to learn about qualitative research and how to capture the human factors that influence the delivery and distribution of healthcare. That knowledge has made me an infinitely better medical device designer.”

Larissa Michelsen

Larissa is a graduate of the Master of Engineering Studies programme. She works as a Product Development Engineer for Fisher & Paykel Healthcare.



Funding your studies

We believe in investing in our postgraduate students. That’s why we offer postgraduate scholarships, awards and prizes to a total value of over \$40 million each year. It pays to investigate funding possibilities as early as possible, so you know what you may be eligible for and when applications are due.

Guaranteed postgraduate scholarships

The University offers guaranteed scholarships to research students who meet grade point average (GPA) thresholds from their qualifying programme. Our guaranteed postgraduate scholarships are some of the most generous scholarships on offer in New Zealand.

As a high-achieving domestic research student, you could be eligible for:

Guaranteed postgraduate scholarships

University of Auckland Postgraduate Honours/ PGDip Scholarship

University of Auckland Māori Postgraduate Scholarship

University of Auckland Pacific Postgraduate Scholarship

University of Auckland Research Masters Scholarship

University of Auckland Doctoral Scholarship

International students

We offer guaranteed University of Auckland Doctoral Scholarships to international PhD applicants who meet GPA thresholds in their qualifying programme from a New Zealand university. For more information, visit: auckland.ac.nz/makethegrade

Other postgraduate scholarships

In addition to guaranteed scholarships, the University offers a range of other postgraduate scholarships, awards and bursaries including:

Postgraduate scholarships

Kupe Leadership Scholarship

University of Auckland Universitas 21 Doctoral Student Mobility Scholarship

The Kate Edger Educational Charitable Trust Awards

Freemasons Postgraduate Scholarships

Various faculty and subject-specific scholarships

Our Scholarships website provides a database of scholarships offered through the University of Auckland, as well as information on external scholarship providers.

For detailed scholarship information, including criteria, closing dates, online applications and application forms, visit:

auckland.ac.nz/scholarships

Summer Research Scholarships

Summer Research Scholarships are a great way to gain valuable research experience over the summer months, boost your CV and help you think about pursuing postgraduate study.

The scholarships provide a \$6,750 tax-free stipend for 2022/23 and are open to high-achieving domestic and international students. Applications are especially welcomed from international students, Māori students, Pacific students and students from other NZ universities. summer.ac.nz

Doctoral scholarships and support funding

University of Auckland Doctoral Scholarships are a generous postgraduate scholarship, paying fees and providing a stipend (living allowance) for three years of full-time doctoral study, which may be extended by a further six months (on application).

Doctoral scholarships are available for both domestic and international students, with opportunities for doctoral candidates from across all faculties and large scale research institutes. For more information about University of Auckland Doctoral Scholarships, visit: auckland.ac.nz/doctoral-scholarship

Under a New Zealand Government scheme, new international PhD students who reside in New Zealand during their doctoral study will pay the same annual tuition fees as New Zealand students (NZ\$7,454.40 per annum in 2022). Including compulsory health insurance for international students (NZ\$697) and the Student Services fee (NZ\$979.20), the total fee in 2022 was NZ\$9,130.60.

auckland.ac.nz/pg-international-tuition-fees

PReSS accounts

If you’re a doctoral candidate undertaking supervised research, you’re automatically entitled to research support funding through a University PReSS account. PReSS accounts provide at least \$1,200 per annum (discipline dependent) over the four year period of your registration, or until initial submission. You can use the money for costs such as attending conferences, research-related travel and accommodation, and research consumables.

auckland.ac.nz/press-accounts

Student loans and allowances

Student loans and allowances are administered by StudyLink, a service of the Ministry of Social Development.

New Zealand citizens and permanent residents may be eligible for financial assistance to support them during their studies.

studylink.govt.nz
Phone: 0800 88 99 00

Employment during study

Advanced postgraduate students are often employed as tutors, laboratory demonstrators or teaching assistants for undergraduate courses. Tutoring is a great way to gain valuable professional and teaching experience during your masters or PhD study.

Other opportunities include part-time research assisting, administrative duties or library work. There may be limits on allowable work hours (particularly for scholarship and international students), so you need to check any conditions that may apply. If you are working outside of the University to finance your study, it’s important that you discuss your work commitments with your department’s postgraduate adviser or your supervisor to ensure you can balance your workload realistically.

“The University acts as a hub fostering the best minds and leaders of the future. To be able to interact with these people has been an immense privilege.”

“Having been inspired by affable neuroscientists throughout my undergraduate Bachelor of Science degree at the University of Auckland, I was curious to find out more about the brain – perhaps our most personal organ.

“On the other hand, I witnessed many peers suffering through depression and anxiety. Current treatments for depression work pretty well, with on average two in three people getting better over a few weeks. However, that still means that of the 280 million suffering from depression globally, one in three would not typically improve using currently accessible treatments.

“Combining my inspired curiosity about the brain, and a desire to help my fellow ‘frolleagues’ (friends/colleagues), I wanted to contribute to the research to better understand the biology of depression and to improve depression treatments.

“I completed a Bachelor of Science (Biomedical Science) and a Postgraduate Diploma which helped establish a solid foundation of current knowledge of the brain and introduced me to a broad range of research areas currently in focus at the University of Auckland.

“I proceeded to complete a Masters which focused on brain imaging techniques including electroencephalography (i.e. electrical signals of the brain) and functional MRI (which measures brain function). This set me up well for my current PhD studies which includes topics of neuroimaging and psychopharmacology.

“University is a great place to meet likeminded people who are passionate about similar topics. I have had the pleasure of working with some of the best researchers, student advocates and teachers; cultivating a thriving atmosphere where we can improve each other’s research, teaching and advocacy skills.”

Joseph Chen

Joseph is a PhD candidate who is researching the areas of neuroimaging and psychopharmacology.



Student services and support

It’s important to feel confident that you have the support you need to succeed. Our extensive range of student services ensure that help is readily available. We can assist you with everything from research skills to career planning.

School of Graduate Studies

The School of Graduate Studies (SGS) is the central service division responsible for managing and enhancing doctoral research programmes at the University of Auckland. SGS facilitates support and services for doctoral candidates and their supervisors across the institution. The division works across the lifecycle of the doctoral programmes, from enrolment to completion, and leads strategic initiatives for doctoral students, supervisors and programmes across and beyond the University.

auckland.ac.nz/sgs

Get in touch at doctoraladvice@auckland.ac.nz

The School of Graduate Studies coordinates a range of events and development opportunities for postgraduate research students, from the regular Doctoral Morning Tea and Doctoral Kōrero sessions, to the annual Three Minute Thesis competition and SGS Research Showcase.

auckland.ac.nz/doctoral-opportunities

auckland.ac.nz/3mt

auckland.ac.nz/sgs-showcase

Postgraduate Students’ Association (PGSA)

The PGSA aims to make postgraduate life more enriching and fulfilling, and is the voice of postgraduate students (alongside AUSA) within the University and the community.

The PGSA hosts social and academic events, produces a newsletter and acts as a representative for postgraduate students on various boards and committees at the University. Membership is free and allows you access to the Postgraduate lounge and gets you a discount at Strata café, both of which are situated on Level 4 of the Kate Edger Information Commons. For membership details, see uoapgsa.org

To learn more about its work, have your say about University issues and receive the latest information about events, you can like the PGSA Facebook page: facebook.com/pgsa.uoa

Student Hubs

The Student Hubs are your physical gateway to Waipapa Taumata Rau.

You can visit the hubs for help and advice on any aspect of planning your studies and life at University.

The Student Hubs services are available seven days a week at the City, Grafton, Epsom and Tai Tonga campuses and six days a week at Tai Tokerau.

auckland.ac.nz/student-hubs

Alumni Relations

Everyone who graduates from the University of Auckland becomes part of our community of more than 214,000 alumni in New Zealand and around the world. The Alumni Relations team keeps you connected with your fellow graduates and the University community through virtual and in-person events, volunteering and mentoring programmes, Ingenio magazine, newsletters and social media.

There are many benefits and services available to our alumni. Visit the alumni and friends website at alumni.auckland.ac.nz or email alumni@auckland.ac.nz to find out more.

Learning support

Libraries and Learning Services

Libraries and Learning Services provide resources, workshops and advice to help you complete your postgraduate study. From our website, you can access a diverse collection of databases, journals and electronic books. Within our libraries, you can access various print, multimedia and microtext materials, including unique manuscripts and archives.

Advisers offer research consultations to help you identify appropriate information sources, create search strategies and help you stay current with research. You can also attend workshops on managing research data, referencing and presenting to assist with your research.

library.auckland.ac.nz/postgraduate

Learning essentials

Postgraduate study at university requires a wide set of academic skills. Our online resources will help you with time management, note-taking and critical thinking. Online resources to support masters research and thesis writing are also available.

learningessentials.auckland.ac.nz

Study space

Libraries and Information Commons (IC) facilities provide more than 4,000 study spaces, many with computers and access to printers, scanners and photocopiers.

In addition to the plentiful general study spaces, there are quiet study and meeting spaces reserved for you in the postgraduate students’ commons.

Many faculties, schools and departments also offer dedicated postgraduate workstations or research facilities, such as the Arts Graduate Study Centre in the Faculty of Arts. Check your faculty website for details or request more information from the postgraduate adviser in your department.

South Auckland Campus, Te Papa Ako o Tai Tonga

The South Auckland Campus, Te Papa Ako o Tai Tonga, is available for use by all University of Auckland students. The facility offers various study spaces and services, including a commons space with a large communal kitchen. The campus also has a large room for quiet study, as well as meeting rooms that can be booked for private study spaces or meetings.

Students can also borrow laptops, use the printing facilities, WiFi and library services. The campus is a quick two-minute walk from both the Manukau bus and train station.

6 Osterley Way, Manukau
Open Monday - Friday. 8am - 8pm
Saturday - Sunday 9am - 5pm

Doctoral Support

The University offers a variety of opportunities for candidates to refine the transferable, research and academic skills needed to complete a doctorate, as well as resources to help with building connections, career planning and professional development.

All doctoral candidates are required to attend an induction and complete a development needs analysis with their supervisor.

Māori and Pacific student support

We welcome and support Māori and Pacific participation and achievement in all aspects of University life.

Waipapa Marae (City Campus) and Te Aka Matua o Te Pou Hawaiki (Epsom Campus) provide a home away from home for our Māori students and their whānau.

Our Fale Pasifika is the centre of the University's Pacific community. It houses the Centre for Pacific Studies, and provides a space for discussion and support.

The Pro Vice-Chancellor Māori and Pro Vice-Chancellor Pacific Office can provide advice and guidance to help ensure our Māori and Pacific students succeed here.

Our offices also provide financial support through the Mana-Toa fund for our Māori and Pacific postgraduate learners throughout the academic year. For more information email:

Sara Toleafoa:

s.toleafoa@auckland.ac.nz

auckland.ac.nz/maoristudents

auckland.ac.nz/pacificstudents

Tuākana

All our faculties offer Tuākana, a learning community enhancing the academic success of Māori and Pacific students through academic mentoring and workshops, and pastoral support.

auckland.ac.nz/tuakana

Te Fale Pouāwhina

Te Fale Pouāwhina is dedicated to supporting students academically and culturally. We specialise in academic learning enhancement through workshops, wānanga and consultations. Our work is underpinned by Kaupapa Māori and Pacific principles.

auckland.ac.nz/tfp

Leadership Through Learning

Leadership Through Learning is a 12-week programme supporting undergraduate and postgraduate Māori and Pacific students to develop academic skills and leadership capability. It provides a culturally safe environment that normalises leadership and learning success.

auckland.ac.nz/leadershipthroughlearning

Personal support

Support for equity-group students

'Equity' means fairness. The Equity Office Te Ara Tautika leads the University's commitment to ensuring everyone who has the potential to succeed at our University can do so. There are a range of initiatives, resources and support for

our students and their whānau and families. Check out the websites below or visit

equity.auckland.ac.nz
auckland.ac.nz/support

Student Disability Services provides support for students with a wide range of impairments, both visible and invisible. If you live with an impairment that impacts your studies then contact us for a confidential chat about how we can help you succeed at the University.

Student Disability Services provides ongoing support for students with diagnosed mental health conditions, and can also refer students with learning difficulties through to Inclusive Learning for dedicated learning support.

disability.auckland.ac.nz
library.auckland.ac.nz/inclusivelearning

Lesbian, Gay, Bisexual, Transgender, Queer, Intersex and Takatāpui+ (LGBTQITakatāpui+) students

auckland.ac.nz/rainbowstudents

Students from refugee backgrounds
auckland.ac.nz/srb

Financial support available to students from low socio-economic backgrounds.

auckland.ac.nz/lowseb

Family Violence - It's not OK

equity.auckland.ac.nz/itsnotok

International student support

The University provides a comprehensive range of support services for international students to help make your life in Auckland as smooth as possible, or to support you with your online study while you are overseas. This includes learning and academic support, English language support and personal support (see pg. 59-60).

international.auckland.ac.nz

Students who are parents

Accommodation

The University offers a limited range of one, two and three-bedroom apartments to postgraduate students with young families (see pg. 57).

accommodation.ac.nz

Early Childhood Education Centres

The University Early Childhood Centres offer assistance with juggling childcare and study. All of our centres follow the New Zealand early childhood curriculum, Te Whāriki.

There are six on-campus early childhood centres providing care for children of our students on the City, Grafton and Epsom Campuses. Bookings are essential as there can be a waiting list at each centre.

Two of the centres are Māori medium centres: Hineteiwaiwa Kohanga Reo on the City Campus and Te Puna Kōhungahunga on the Epsom Campus.

auckland.ac.nz/childcarecentres

Parent Space and breastfeeding facilities

Parent Space (available at City Campus) offers facilities for students with children under 16, including study space, computers and WiFi, a high chair and port-a-cot, toys and books, and a place for you to relax. Breastfeeding facilities are available on all of our campuses.

auckland.ac.nz/parentingsupport

Health and counselling service

Your health and wellbeing is key to your success while you're studying. Our health and counselling service has practitioners who specialise in student needs, offering you quality advice, support and care. Our main centre is at the Kate Edger Information Commons on the City Campus. Zoom appointments can also be arranged. Students who also register the service as their primary health organisation are eligible for discounted healthcare.

auckland.ac.nz/healthandcounselling

Student Wellbeing

Be Well offers a range of tools and information to care for your physical, emotional and spiritual wellbeing so you can thrive during your time at University. The team's focus is on proactive and preventative measures that promote health, reduce stress and enhance a sense of community and belonging at the University, particularly through events and trainings led by their Student Wellbeing Ambassadors.

auckland.ac.nz/be-well

AUSA Advocacy

AUSA Advocacy is a professional service that provides advice to students on a range of academic, administrative and welfare related issues. All students can access this free, confidential service, which is completely independent from the University.

AUSA provide advice about your rights and responsibilities within the University, in a respectful, non-judgmental and timely manner. Their services include advocacy, support, assistance, information and referrals on any issues that may affect your ability to meet your academic goals. AUSA aim to empower you to negotiate University policy and grievance procedures and to develop an environment where the privacy, dignity and respect of all parties are maintained.

AUSA Advocacy

Student Support Hub, AUSA House

4 Alfred St, across from the City Campus Library
Open daily 9am-4pm

Email: advocacy@ausa.org.nz

Phone: +64 9 309 0789

ausa.org.nz





Finding accommodation

As a postgraduate student, you need a living environment that allows you to focus on your studies, while enjoying all the social and recreational opportunities that the University and city of Auckland have to offer.

University-managed accommodation

Furnished, self-catered options

All of our residences offer the opportunity to meet and make new friends with other students from New Zealand and around the world. In residences that house both postgraduate and undergraduate students, postgraduate students are housed close together so that they can form their own community.

55 Symonds

55 Symonds offers modern, air-conditioned studio deluxe and studio deluxe double apartments that are suitable for both singles and couples. As well as the amenities offered in your studio, shared facilities include a large communal kitchen and dining area opening onto a spacious courtyard with BBQ, TV room, lounge and additional study areas.

Carlaw Park Student Village

Located in Parnell, Carlaw Park is only a five minute walk from the City Campus and accommodates over 1600 students between two and six bedroom apartments spread throughout eight buildings. The two bedroom apartments are exclusively designated for students with young families. Each building has direct access to shared common areas, including a large study room, games room, large outdoor area and laundry facilities.

Te Tirohanga o te Tōangaroa

Located at 128 Anzac Ave, just a five-minute walk from the University General Library on the City Campus, Te Tirohanga opened in 2020 and features modern amenities. This residence offers 488 single rooms, with communal kitchen, dining, study, lounge and games areas, as well as music and movie rooms and access to a rooftop deck with a BBQ.

Waikohanga House

Located at 44 Symonds Street, just a five minute walk from the City Campus, this beautifully refurbished building is the University's newest accommodation for couples and families. Waikohanga House offers fully-furnished one, two and three bedroom apartments. Residents have access to on-site laundry and printing facilities.

How to apply

You can apply online for a place in a University-managed residence for 2023 from 1 August 2022 at accommodation.ac.nz

Contact Accommodation Solutions

Come and see us at our office, call or email us for assistance.

9 Grafton Road
Grafton
Auckland 1010

Phone: +64 9 373 7599 ext 87691
0800 864467/0800 UNIHOST
Email: accom@auckland.ac.nz

Advisory Service

Phone: +64 9 373 7599 ext 89451
Email: advisoryaccom@auckland.ac.nz
accommodation.ac.nz/advisoryservice

Recreation and entertainment

Cafés, bars and shops

Whether you're lunching with friends or just grabbing a snack, there's an outlet on campus to suit your needs. Our wide range of retailers and vending machines ensure you don't need to travel far, giving you time to enjoy the vibrant campus culture.

auckland.ac.nz/foodandretail

Strata, the postgraduate area on the fourth floor of the Kate Edger Information Commons, features a postgraduate lounge – a large, quiet study area – and a licensed café with a balcony that overlooks the City Campus. The PGSA hosts a number of postgraduate functions throughout the year on and off-campus.

Doctoral students are welcome to join the Staff Common Room (SCR) Club at Old Government House on the City Campus. Primarily a social club, the SCR operates a café and bar, and organises social functions for its members. Email SCRadmin@auckland.ac.nz to join.

Clubs

There are over 200 student clubs, societies and associations at the University, ranging from cultural to academic, sport to spiritual and many more including the Postgraduate Students' Association (PGSA). Attend Clubs Expo at the start of the semester to meet current club members and find out more.

auckland.ac.nz/clubs

Sport and recreation

Play sport, get fit and have fun. If you're keen on sport, social or competitive, we have a wide range of offerings to suit you. We provide social sports leagues, interfaculty tournaments, marine sports, elite athlete study support, and the opportunity to play for New Zealand's top sporting University at the National Tertiary Championships.

If you're looking to keep fit and healthy, you can find our University Recreation Centre on the City Campus, as well as a range of online fitness options. Our affordable memberships give you access to a wide range of fitness equipment, multiple studios, in-person and online group fitness classes and more.

The University has recognised the crucial role that sport and recreation play in the wellbeing and success of our students and staff. To maximise students' sporting and fitness opportunities, a brand-new state of the art Recreation and Wellness Centre is currently being built at 17 Symonds Street which is due to open in 2024.

auckland.ac.nz/sportandrec

Music and culture

You can often enjoy free musical events across campus. 95bFM broadcasts from the City Campus, providing news, views, music, gig guides and an accommodation guide. Visit 95bfm.com for live streaming or to volunteer.

Visit the Gus Fisher Gallery to see work by established New Zealand and international artists or try the George Fraser Gallery for a taste of the talent at Elam School of Fine Arts.

Drama students frequently present productions in our Drama Studio.

Details of music concerts, dance performances and art exhibitions produced by the Faculty of Creative Arts and Industries can be found at creative.auckland.ac.nz, where you can sign up to receive regular updates.

What's On is your online hub for all activities and events at the University. Read your fortnightly What's On newsletter or like the What's On Facebook page to keep up-to-date with what's happening on campus.

auckland.ac.nz/whatson
facebook.com/uowhatson



Find out more
auckland.ac.nz/studentssupport

Accommodation for couples and families

We provide a range of accommodation for couples and families. Demand is high for this accommodation and availability is limited, especially if you are applying outside of Semester One. If you are applying in Semester Two or between February and November, we recommend you contact our Accommodation team for assistance in finding accommodation that best fits your needs.





Arriving from overseas

The University of Auckland warmly welcomes students from all over the world. Studying with us offers you a wonderful opportunity to gain an internationally recognised qualification in a stimulating environment. Our diverse student population includes international students from more than 120 countries, so you'll be part of a genuinely global academic community.

Why study in New Zealand?

- As a safe and politically stable country with a high standard of living, New Zealand is an ideal place to enjoy your postgraduate study.
- New Zealand enjoys a global reputation for technical innovation supported by its world-class education system and reputation for research excellence.
- Education in New Zealand is not just about imparting knowledge, but also about generating new ideas and fostering independent thinking.
- Studying at the University of Auckland, New Zealand's leading university,* will equip you for the global marketplace with an internationally recognised qualification.

*worldranked.ac.nz

Support for international students

As an international postgraduate student, you will have access to the extensive support services the University of Auckland offers to all its students. There are also specialist international student support services to help you adjust to life in New Zealand and enjoy your studies at the University.

International Orientation

The International Office arranges an Orientation programme at the beginning of Semester One and Two for new international students. It is designed to give you comprehensive information you need about the University and living in Auckland. In addition, the University puts on a number of social, sporting and cultural activities that provide great opportunities to make new friends. The International Office also offers an extensive online orientation for students starting their studies from overseas. The Business School also provides an Orientation for its coursework masters students in Quarters Two and Four.

When you arrive, you can sign up for a Uniguide – a current student who can answer your questions and help you find your way around campus during your first few weeks.
auckland.ac.nz/is-orientation

Pastoral care for international students

Our International Student Support team recognises the pressures that students face when studying overseas. They are happy to assist you with any non-academic questions you may have, or challenges you may face, during your time at the University of Auckland.
auckland.ac.nz/international-student-support

Scholarships

The University of Auckland administers scholarships that are open to international students wishing to pursue postgraduate study. The International Office also works with external scholarship agencies and government bodies to provide opportunities for international students who meet entry requirements.

See the following table for a selection of available scholarships. For a full list, visit auckland.ac.nz/is-scholarships

Postgraduate scholarships for international students

University of Auckland International Student Excellence Scholarship
University of Auckland Doctoral Scholarship
University of Auckland Faculty of Engineering Doctoral Scholarship
University of Auckland Transnational Education Partner High Achiever Award
University of Auckland Vietnam Excellence Scholarship
Asian Development Bank – Japan Scholarship Program
Dean's International Doctoral Scholarship (FMHS)
Faculty of Education and Social Work Postgraduate International Student Scholarship
Faculty of Arts Doctoral Scholarship
Faculty of Arts International Masters Degree Scholarship
Faculty of Creative Arts and Industries International Student Masters Award
New Zealand Scholarships
University of Auckland Fulbright Scholarships
University of Auckland Health Research Doctoral Scholarship
University of Auckland International Business Masters Scholarship
University of Auckland Law School's Dean's Doctoral Scholarship
University of Auckland Senior Health Research Doctoral Scholarship
University of Auckland Vietnam Excellence Scholarship

For more information on scholarships available to international students, including selection criteria, application forms and closing dates, visit: auckland.ac.nz/is-scholarships

University of Auckland Doctoral Scholarships

Doctoral scholarships are available for both domestic and international students, with opportunities for doctoral candidates from across all faculties and large scale research institutes.

auckland.ac.nz/doctoral-scholarship

Domestic fees for PhDs

Under a New Zealand Government scheme, new international PhD students who reside in New Zealand during their doctoral study will pay the same annual tuition fees as New Zealand students (NZ\$7,454.40; US\$4,898.75* per annum in 2022). Including compulsory health insurance for international students (NZ\$697) and the Student Services fee (NZ\$979.20) the total fee in 2022 was NZ\$9,130.60 (US\$5,992.70* per annum).

*Exchange rate as at 27 April 2022.

Benefits of studying for a PhD in New Zealand

- As a PhD candidate you have open work rights under the terms of your student visa.
- On completion of your PhD, you can apply for a three-year Post-Study Work Visa which allows you to work for any employer in New Zealand.
- Your spouse or partner can apply for a work visa valid for the duration of your PhD programme.
- Your dependent children can attend New Zealand's primary and secondary schools at the same subsidised rate as New Zealand children.

immigration.govt.nz

University-managed accommodation fees

	Single	Couple	Family	Mobility	Age	Room type	Bathroom	Self-catering	Recreation	Mins to campus	Weekly rate
Carlaw Park Student Village	✓	✗	✓	✓	18+	Single Two bedroom family	Shared Private	✓	Basketball, BBQ, games room, lounge, study	10	\$299 ¹ \$510 ¹
Te Tirohanga o te Tōangaroa	✓	✗	✗	✓	18+	Single	Shared	✓	Study rooms, television lounge, movie and music rooms, games room equipped with a pool table, rooftop deck with BBQ	5	\$285 ¹ \$280 ²
55 Symonds	✓	✓	✗	✓	18+	Studio deluxe Studio deluxe double	Private Private	✓	BBQ, games room, lounge, study room, TV room	8	\$390 ¹ \$390 ¹
Waikohanga House	✗	✓	✓	✓	PG	One bedroom apartment Two bedroom apartment (family) Three bedroom apartment (family)	Private Private Private	✓	BBQ and common room	5	\$430 ² \$510 ² \$590 ²

¹Fees are based on the weekly rates for a 42-week period in 2022. Accommodation fees for 2023 will be set in late 2022.

²Fees are based on the weekly rates for a 52-week period in 2022. Accommodation fees for 2023 will be set in late 2022.

PG = postgraduates.

Postgraduate STEM discount

For Engineering and Science IT postgraduate students in India, we offer a study support package to help you pursue your educational goals while studying with us online, until you can come and join us here in Auckland. Terms and conditions apply, find out more at:

auckland.ac.nz/india

English language support

If English is not your first language, you will be required to provide proof of your English-language proficiency to be accepted for postgraduate study (see auckland.ac.nz/pg-english-reqs for more information about English-language requirements). The University provides plenty of support to help you further develop your academic English skills during your studies.

DELNA

DELNA (Diagnostic English Language Needs Assessment) is a free service that determines the level of English language support you will need to succeed in your studies.

delna.auckland.ac.nz

English Language Enrichment (ELE)

English Language Enrichment (ELE) provides opportunities to develop your academic communication skills through in-person and online workshops as well as individual consultations. You can join language learning groups, participate in Writing in English workshops, meet individually with a language adviser and find language exchange partners.

You can also access language learning materials and tools to help improve your academic English through ELE Online.

library.auckland.ac.nz/ele

Working while you study

If you are enrolled as a full-time student at the University of Auckland, you may be eligible to work during your programme of study.

For up-to-date information on work rights while on a student visa in New Zealand please visit:

immigration.govt.nz/study

Career Development and Employability Services (CDES)

You don't need to know what job you want but it's good to start thinking about your career during your studies. At Career Development and Employability Services (CDES), our team is here to support you from day one.

We offer online and in-person resources, consultations and host events and workshops that help you identify opportunities, network with employers and become work-ready. CDES also has a specialised careers consultant for international students.

Work with us to build knowledge and make connections for life. You can use our services during your studies and for three years after graduation.

cdes.auckland.ac.nz

Before you arrive in New Zealand

Immigration

You must apply for a student visa to cover the period you intend to study in New Zealand. You must show evidence that you have been accepted into a programme, have paid your tuition fees and have sufficient funds to cover your costs while in New Zealand. You must apply for your visa before entering New Zealand.

Full details on rights to employment in New

Zealand while studying, and how to apply for your visa, are available through Immigration New Zealand: immigration.govt.nz/study

For help with your application, assistance with visas and insurance, or for more information about life and study in New Zealand, contact:

International Office

Website: international.auckland.ac.nz

Questions: auckland.ac.nz/student-hubs

Email: studentinfo@auckland.ac.nz

Postal address:

The University of Auckland
Private Bag 92019
Auckland 1142
New Zealand

Street and courier address:

Alfred Nathan House
24 Princes St
Auckland 1010
New Zealand

International students

bring perspectives from over 120 countries to our campuses.



"I am fortunate that my years at the University of Auckland have provided me with opportunities and experiences that I will carry with me for life."

Xavier is a Master of Science in Geography graduate. He works as a Poukokiri Rangahau Māori (Senior Librarian, Māori Research) at Auckland Council.

"My postgraduate interests came about in my third year of undergraduate study, helped greatly by having enthusiastic lecturers. I think some of their energy rubbed off on me."

"The people I encountered and the opportunities that came out of that are the main highlights from my time studying. Meeting people and learning about their interests enriched my time at university."

"I am a research librarian specialising in Māori subject matter. My interests span history, to arts and crafts, to whakapapa research. I help people with reference enquiries in these areas, as well as undertake my own research."

"The ability to get on with people from various backgrounds has been valuable and has carried me on to my current job. Research work, collecting and analysing information, and looking at different perspectives are also skills that I have developed and am still developing."

Xavier Forsman

Xavier (Te Rarawa) is a recipient of the School of Environment Māori Masters Thesis Scholarship.



Hear more from our postgraduate students about their experience at UoA auckland.ac.nz/pg-stories

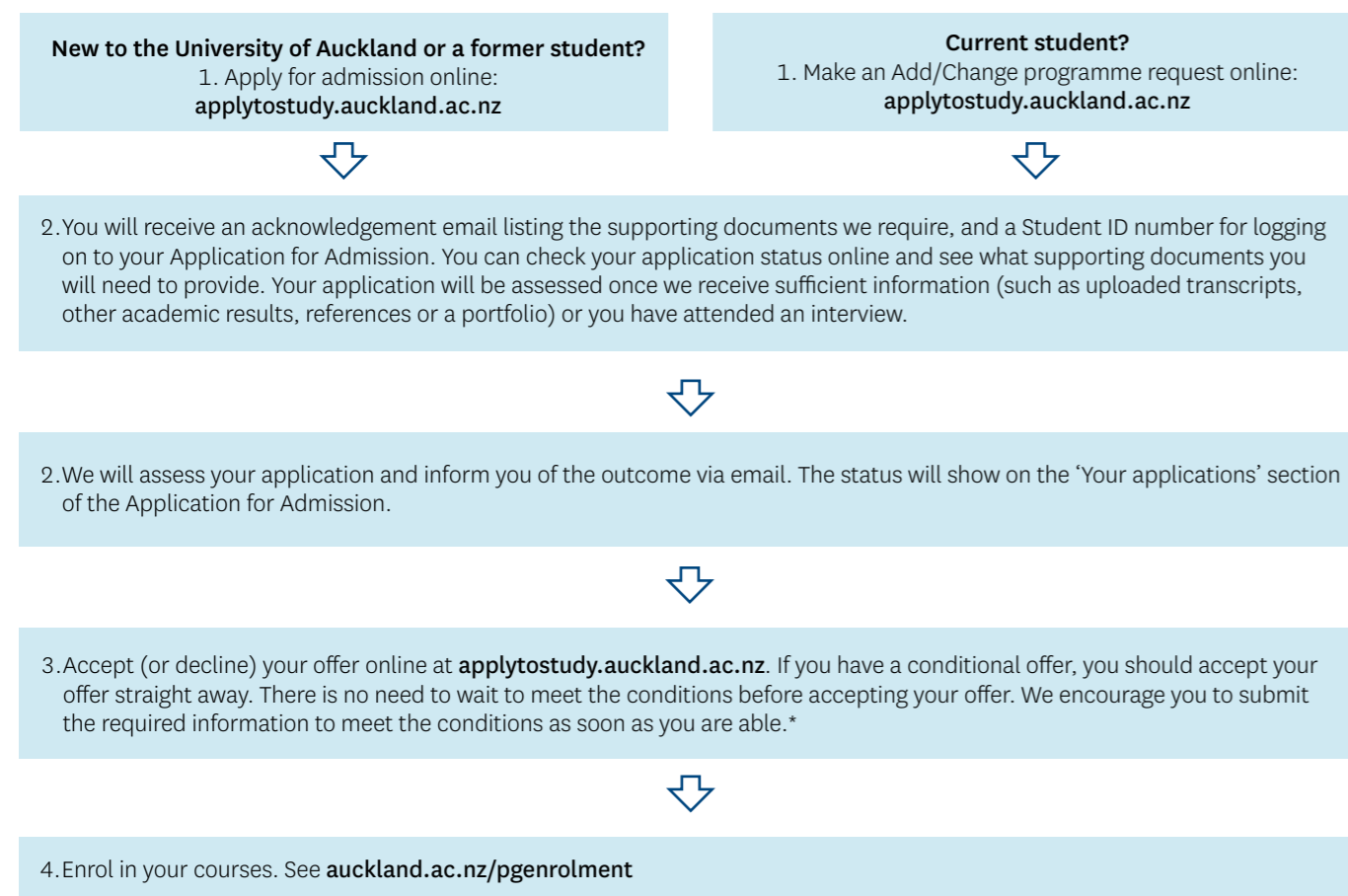
How to apply

Honours, postgraduate certificate, postgraduate diploma and masters programmes

Before you apply

- Check the entry (auckland.ac.nz/pg-entry-requirements) and English-language (auckland.ac.nz/pg-english-reqs) requirements for your programme.
- Check the application closing date online. We recommend you apply as early as possible. You don't need to wait to meet the requirements before applying – as long as you meet them before the programme begins.

Ready to apply?



Applying for a Graduate School of Management programme

For information on how to apply to a Graduate School of Management programme, visit gsm.auckland.ac.nz

Need help applying?

Find answers to frequently asked questions:
auckland.ac.nz/student-hubs
Email: studentinfo@auckland.ac.nz

*Conditional offers

Conditional offers are made when your place in a programme is subject to one or more conditions. For example, you may need to supply final results or complete a prerequisite course.

When you receive a conditional offer:

1. Accept (or decline) the offer.
2. Meet the conditions.
3. Submit evidence that you have met the conditions.

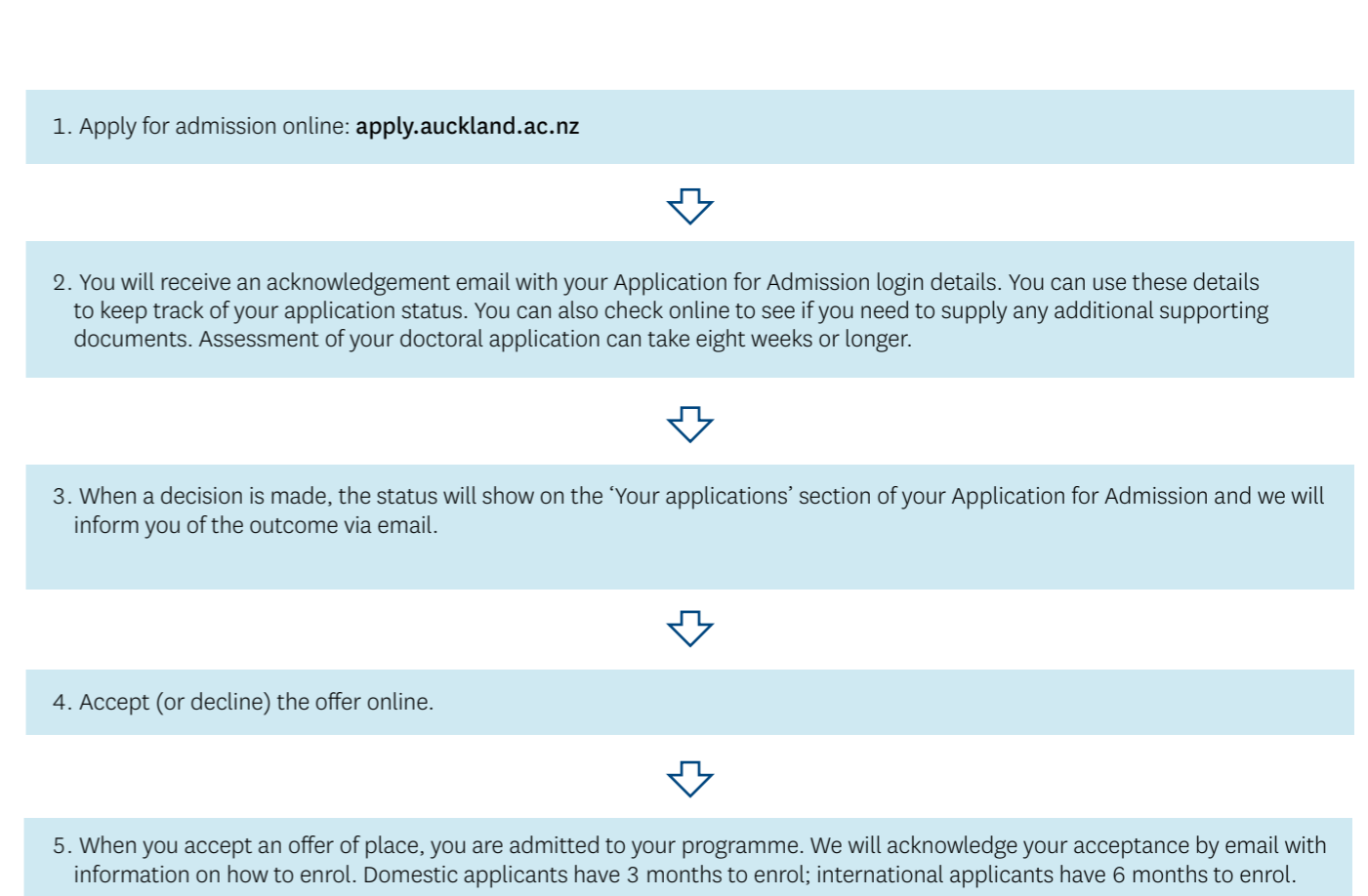
PhD or named doctorate

Before you apply

- Read the academic entry requirements: auckland.ac.nz/doctorsentry
- Decide on, and clarify as much as possible, your potential research topic or area of research. Check that we have active research in your preferred research area by exploring Discovery Profiles: profiles.auckland.ac.nz.
- Check the English-language requirements for your programme: auckland.ac.nz/pg-english-reqs
- If you are applying for the Doctor of Clinical Psychology or Doctor of Education, please check the application closing date. Applications for all other doctoral programmes may be submitted at any time of the year.
- Have electronic copies of the following ready:
 - Relevant academic transcripts
 - Statement of Research Intent
 - Academic CV or résumé
 - Evidence of research activity (including a thesis or dissertation)
- Arrange for two referees to support your doctoral application. Doctoral referee reports must be submitted directly from your referees.

You can download a Statement of Research Intent form, a Doctoral Referee Report form, and follow our step-by-step guide for doctoral applications, admissions and enrolment at auckland.ac.nz/applydoctorate

Ready to apply?



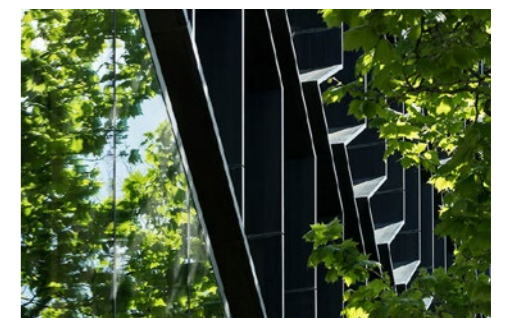
International applicants

Follow the guidelines above.

Read the entry requirements for non-doctoral programmes for international applications: auckland.ac.nz/pg-entry-requirements

We recommend you apply as early as possible to allow sufficient time to apply for visas.

We have a number of official agents and overseas representatives who can help you with the application process in person: see auckland.ac.nz/findanagent





**UNIVERSITY OF
AUCKLAND**
Waipapa Taumata Rau
NEW ZEALAND

Get in touch, or visit us at your local

Student Hub:

studentinfo@auckland.ac.nz
auckland.ac.nz/student-hubs

City Campus:

General Library, Building 109,
5 Alfred Street, Auckland

Epsom Campus:

Sylvia Ashton Warner Library, Gate 3
74 Epsom Avenue (Parking at Gate 2)

Grafton Campus:

Philson Library, Building 503
Level 1, 85 Park Rd, Grafton
(Entry via the Atrium)

South Auckland Campus


Te Papa Ako o Tai Tonga:

6 Osterley Way, Manukau

Whangārei Campus

Te Papa Ako o Tai Tokerau:

L Block, 13 Alexander Street, Whangārei



postgraduate.ac.nz