



THE UNIVERSITY OF
AUCKLAND
Te Whare Wānanga o Tāmaki Makaurau
NEW ZEALAND

Māori and Pacific Health Career Pathways

Undergraduate Handbook 2022



No.1
New Zealand
University¹



No.1
Global Impact
Ranking²



No.1
In New Zealand
for Employability³



Nau mai, haere mai **Māori and Pacific** **at our faculty**

E ngā waka, e ngā mana, e rau rangatira mā. Tēnā rā koutou katoa.
Malo e lelei, kia orana, talofa lava, fakaalofa lahi atu, ni sa bula, taloha ni,
halo olaketa, ia orana, kam na mauri.

Whaia te pae tāwhiti kia tata whakamaui te pae tata kia tīna.
Reach for the distant horizons and hold fast to those that you attain.

Welcome to the Faculty of Medical and Health Sciences (FMHS) at the University of Auckland. Through our Vision 20:20 initiative, we are aiming to change the face of the health workforce by increasing the number of Māori and Pacific health professionals, including health workers, policy makers and researchers.

We are determined to optimise the health and wellbeing of Māori and Pacific communities and change the face of the health workforces in Aotearoa New Zealand by supporting Māori and Pacific students reach their career goals in health, this vision moves closer.

I am a proud graduate of the University of Auckland and of programmes within this faculty. As a leader and senior staff member, I can assure you that the quality of our programmes and our staff's commitment will provide you with the foundation you need for a rewarding career in health.

I look forward to welcoming you to our University.



PROFESSOR PAPAARANGI REID (Te Rarawa)
Tumuaki



ASSOCIATE PROFESSOR COLLIN TUKUITONGA
Associate Dean (Pacific)



PROFESSOR JOHN FRASER
Dean, Faculty of Medical and Health Sciences
The University of Auckland

Health science and health care are changing rapidly. There are many different roles within the health industry and we are proud to offer a wide range of high quality education and training pathways into these roles.

Since our beginnings in 1968, we have become internationally recognised as a comprehensive health sciences faculty, with more than 1,000 staff and 4,500 students across fields such as medicine, nursing, medical science, public health, health promotion and management, pharmacy, optometry, medical imaging and so much more.

Join us in 2022 and become part of a welcoming, supportive whānau and an active student body. As a student here, you will benefit from academic, professional and research staff who are at the forefront of their fields.

Explore this handbook and visit our website to learn more about your options. I very much look forward to welcoming you in 2022.

¹Times Higher Education and QS World Rankings 2020

²Times Higher Education University Impact Rankings 2020

³QS World Rankings Graduate Employability, number one in NZ and 59th Worldwide in 2020



Contents

01 Admission

Vision 20:20	4
Pathways into our faculty	5
Māori and Pacific Admission Scheme (MAPAS)	6-7
Hikitia Te Ora - Certificate in Health Sciences (CertHSc)	8-9
The Whakapiki Ake project (WAP)	10-11
Student Services	15
How to apply	16
Contacts	19

Front page featuring:
Lili-Ole-Vanu Latu
Iwi/village: Fogapoa and Safune (Samoa)

Vision 20:20

An initiative to increase the number of Māori and Pacific in the health workforce.

Vision 20:20 has three components coordinated by Te Kupenga Hauora Māori (Māori Health): Māori and Pacific Admission Scheme (MAPAS), Hikitia Te Ora – Certificate in Health Sciences (CertHSc) and the Whakapiki Ake Project (WAP).

The Whakapiki Ake Project (WAP)

Māori Recruitment

The Whakapiki Ake Project (WAP) is a recruitment programme that actively engages with rangatahi Māori enrolled in secondary schools. We promote health as a career and encourage Māori and Pacific students to enter the Faculty of Medical and Health Sciences (FMHS) programmes. WAP offers exposure to health career options, support for students to apply to FMHS, support with transitioning to tertiary study and some financial assistance for successful applicants.

Hikitia Te Ora – Certificate in Health Sciences (CertHSc)

Foundation programme

The Certificate in Health Sciences is a one-year foundation programme that prepares Māori and Pacific students for successful tertiary study in health. We focus on academic and science literacy, including chemistry, physics, biology, mathematics and population health, all of which are necessary for success in First Year courses taught in the FMHS.

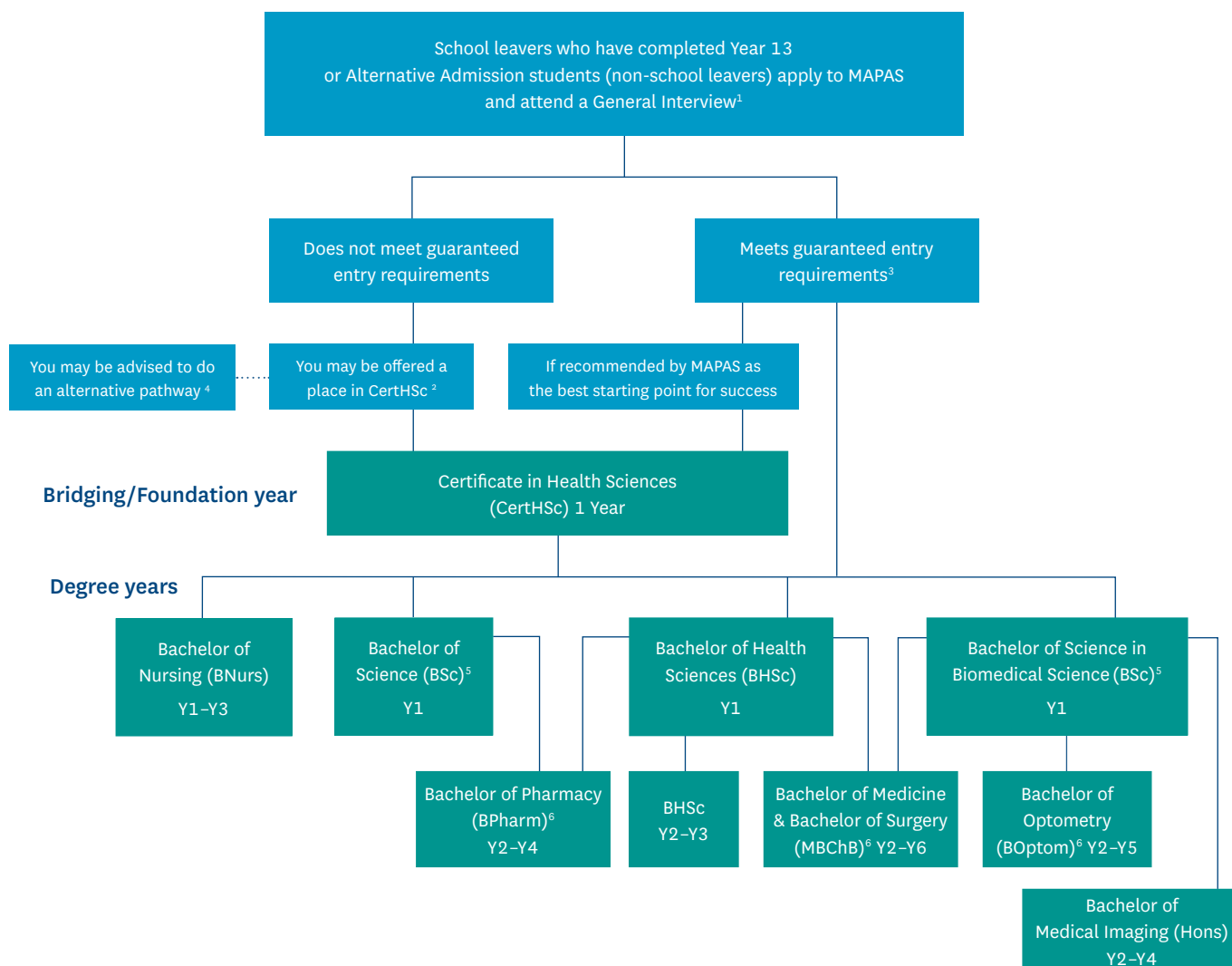
Māori and Pacific Admission Scheme (MAPAS)

Admission/Retention/Academic and Pastoral Support

MAPAS is a long-standing programme that provides current and prospective Māori and Pacific students in the faculty with admission, academic and pastoral support. Our goal is to encourage MAPAS students to successfully complete their programme and graduate while on their cultural and academic journey, leading to a career in health.



Pathways into our faculty



Degree duration

Bachelor of Pharmacy	4 years
Bachelor of Nursing	3 years
Bachelor of Health Sciences	3 years
Bachelor of Medicine and Bachelor of Surgery	6 years
Bachelor of Optometry	5 years
Bachelor of Medical Imaging (Hons)	4 years

1. MAPAS General Interviews (see pg. 6).

2. Students who have not met the entry requirements may be offered a CertHSc place based on our assessment of their best starting point at the MAPAS General Interview (see pg. 6).

3. Students who have attained the entry requirements for the University of Auckland are eligible to proceed directly to the first degree year.

4. After assessment at the MAPAS General Interviews the applicants may be advised of an alternative pathway.

5. This programme is offered by the Faculty of Science and provides a pathway into the Bachelor of Medicine and Bachelor of Surgery (MBChB), Bachelor of Optometry (BOptom), Bachelor of Medical Imaging (Hons) and Bachelor of Pharmacy (BPharm) offered by the FMHS.

6. Graduate applicants* can apply to Year 2 MBChB, BPharm, BOptom and BMedImag(Hons). For more information visit:

www.auckland.ac.nz/en/fmhs/study-with-us.html

*Graduates are applicants who have completed an undergraduate or postgraduate degree or postgraduate diploma at a recognised university within NZ.

Māori and Pacific Admission Scheme (MAPAS)

MAPAS provides admission, academic and pastoral support for Māori and Pacific students who are studying within the Faculty of Medical and Health Sciences (FMHS). Our goal is to support the transition and retention of MAPAS students while on their cultural and academic journey, helping them to successfully complete and graduate.*

Am I eligible?

You are eligible for MAPAS if you:

1. Have verified New Zealand Māori or Indigenous Pacific whakapapa/ancestry, and
2. Are a citizen or permanent resident of New Zealand and
3. Have applied for entry into an FMHS programme.

Important dates

MAPAS General Interview dates

For 2022 entry:

General: Mid-December 2021

MAPAS Specialty Interview dates

Specialty: Mid-late November 2021

Programme application closing dates:

CertHSc BHSc BNurs	8 December 2021
MBChB (Part II) BOptom BPharm BMedImag(Hons)	1 October 2021

How do I become a MAPAS student?

- Complete an application to the University
- Complete an application for MAPAS – MH04 form
- Attend a MAPAS Interview
- Accept a place in an FMHS programme

More information can be found on pg.14

Semester Two applications

Please contact MAPAS before you apply for the following programmes:

- Medical Imaging
- Medicine
- Pharmacy
- Optometry

Email: mapas@auckland.ac.nz

MAPAS General Interviews

Applicants who are eligible for MAPAS and have applied to the CertHSc, BHSc or BNurs will be invited to attend a MAPAS General Interview.

Applicants need to be prepared to spend ONE whole day (from 8am-6pm) for the interview process, which will be held in Auckland in mid-December.

The MAPAS General Interview involves the following process:

- Pōwhiri – applicants and their whānau attend a pōwhiri at the beginning of their interview day.
- Multiple Mini Interview (MMI) – applicants rotate through a number of stations for short 1:1 interviews.
- Mathematics test – basic numeracy skills are identified by a written test.
- English literacy test – basic literacy skills are identified by a written test.
- Whānau/family feedback – applicants are invited to receive feedback of their assessment with their whānau on the day of the interview. The feedback is based on our assessment of the MMI and tests, and will include a provisional recommendation for the applicant's intended health career.
- A final MAPAS recommendation is made in mid-January 2022 when Year 13 school results become available.

The interview process is used to establish the best starting point for a career in health. If an applicant has met the criteria for entry into an FMHS programme, then they may still be offered a place independent of the MAPAS Final Recommendation. We strongly encourage all applicants to take the MAPAS Final Recommendation into account when considering their programme of study.

All correspondence will be by email. It is the applicant's responsibility to regularly check the email address that has been given to them by the University of Auckland.

MAPAS Specialty Interviews

Applicants who are eligible for MAPAS and have met programme application requirements for MBChB, BPharm, BOptom and BMedImag (Hons) may be invited to attend a MAPAS Specialty Interview.

A MAPAS Admissions Panel reviews all MAPAS applications and will determine whether an applicant is offered a MAPAS Specialty Interview based on an applicant's academic record.

Applicants who are invited to a MAPAS Specialty Interview will be notified by email.

The MAPAS Specialty Interview consists of a Multiple Mini Interview involving five stations assessing suitability to enter Medicine, Pharmacy, Optometry and Medical Imaging under MAPAS. Please note all MAPAS Specialty Interviewees will also need to attend a programme interview.

**The MAPAS application and admission process does not apply to those wanting to pursue postgraduate studies within FMHS. For more information on postgraduate MAPAS support please contact us on: mapaspg@auckland.ac.nz*

How can MAPAS support me?

MAPAS Academic Support

MAPAS students within the faculty receive additional academic support designed to help them succeed within their programme. MAPAS supports students academically by providing:

- Tracking of attendance and academic progress
- MAPAS group tutorials for specific courses
- MAPAS study space and computers
- Study workshops and wānanga (in conjunction with Student Learning Services)
- Support to set up MAPAS study groups
- Senior representation on faculty/programme boards including Board of Admissions and Board of Examiners

MAPAS Pastoral Support

All MAPAS students within the faculty receive additional pastoral support designed to help them achieve success within their programme.

This includes:

- Access to a MAPAS Student Support Adviser for each programme, who is available to help students with any pastoral issues such as accommodation, financial, personal, family or work
- Assistance to access key support services such as Student Health and Counselling, Student Learning Services, Spiritual and Religious Support, Tuākana Network, Disability Office and the Examinations Office
- Cultural development and support through workshops and wānanga
- Peer/whānau support through regular cohort meetings
- MAPAS wānanga (held prior to Semester One to whakawhanaungatanga/allow students to get to know each another and to learn key study skills)
- MAPAS completion ceremonies to celebrate the success of our students

Scholarships and awards for MAPAS students

A webpage has been developed by MAPAS to take advantage of the financial support that is available for all Māori and Pacific people who are studying a programme in the faculty.

Take the time to go through the website carefully to identify the scholarships and awards that are applicable to you and your future study.

Visit:

www.fmhs.auckland.ac.nz/mapasscholarshipinformation

MAPAS home page

www.fmhs.auckland.ac.nz/mapas



“As I entered my high school years, I started to become aware that some ethnic groups had worse health outcomes than others.

“My Māori and Pacific friends and family seemed to face obstacles that our counterethnic peers tended to not experience, the most memorable example for me being family deaths.

“I wanted to understand why there was a disparate gap in life expectancy between Māori and Pacific people and our counter ethnicities in Aotearoa.

“This fuelled my drive to pursue a career in health as a doctor, so that I could make autonomous decisions in hospitals and communities for the betterment of my people.”

Casey Mansson

Ngāpuhi, Ngāti Awa

Graduate: Hikitia Te Ora – Certificate in Health Sciences – (CertHSc), Whakapiki Ake (WAP)

Student: Bachelor of Medicine and Bachelor of Surgery (MBChB)

auckland.ac.nz/certhsc

Hikitia Te Ora – Certificate in Health Sciences (CertHSc)

The CertHSc is a one-year foundation programme aimed at bridging Māori and Pacific students from secondary school study or from the community into programmes offered by the Faculty of Medical and Health Sciences. The programme covers a wide range of subjects including population health, biology, physics, chemistry and maths to academic professional development.

Who should apply?

The CertHSc is an ideal programme for students who may have:

- ‘Gaps’ in their science knowledge from secondary school (i.e., have only two out of the three core science subjects (Biology, Chemistry or Physics))
- Not achieved the rank score required or the level of credits in specific subjects required for direct entry into bachelor programmes offered by the faculty
- Prior work experience or relevant tertiary study and the commitment to succeed within the CertHSc bridging/foundation programme

The overall objective of the CertHSc is to increase the number of Māori and Pacific students completing programmes in health care and health sciences so they will eventually enter the workforce as successful health professionals.

In order to achieve this vision, the CertHSc focuses all course content on preparing students for success in First Year courses leading to the following degrees:

- Bachelor of Nursing (BNurs)
- Bachelor of Pharmacy (BPharm)
- Bachelor of Health Sciences (BHSc)
- Bachelor of Medicine and Bachelor of Surgery (MBChB)
- Bachelor of Optometry (BOptom)
- Bachelor of Medical Imaging (Honours) (BMedImag(Hons))

Applying for the CertHSc

You must apply under MAPAS and apply to the CertHSc programme.

Applicants must:

- Apply via the University’s online application for the CertHSc
- Submit a complete MAPAS MH04 form

Procedure for selection for CertHSc

Students are selected for the CertHSc via the MAPAS General Interview process. (See pg. 6 for more details).

Please contact the CertHSc MAPAS Adviser for more information about whether this is a suitable programme for you and your career plans.

Important notes

- Submission of a MH04 form alone does NOT constitute a formal application to the University. Applicants must also complete the University’s online application by the closing date of the CertHSc programme (See pg. 6).

CertHSc Course Structure

A student enrolled in the CertHSc must:

- Follow a programme of two full-time semesters in one calendar year
- Take a total of ten courses with a total value of 120 points (see course list opposite)
- Pass all courses to complete the CertHSc

Completion of the CertHSc will grant students without University Entrance qualifications “Ad Eundum” entrance to the University of Auckland and other New Zealand universities.

Semester One

Introduction to Biology

An introduction to the structure, function and processes of the human body at cellular and tissue levels. Special emphasis on the four primary tissues including membrane transport, muscle types and function, blood and the immune response, and basic neurobiology.

Provides foundational knowledge of development post fertilisation and the anatomy and physiology of selected mammalian organ systems. Exposes students to the laboratory environment, particularly microscopy and tissue dissection.

Introduction to Chemistry 1

An overview of general chemistry principles with an emphasis on the language of chemistry and the use of mathematics to determine answers to chemical problems. An emphasis is placed on the atomic scale of matter so that students are able to describe the macroscopic world using a molecular perspective and relate chemical structures to functions. Laboratory work includes techniques of simple qualitative and quantitative measurements.

Introduction to Population Health 1

Introduction to key concepts and foundational knowledge in population health. Concepts include models for conceptualising health, the aggregate health of groups, social determinants of health, social gradients in health outcomes, and health inequalities and inequities, and foundational understanding of health care systems.

Academic and Professional Development in Māori and Pacific Health 1

Provides study and academic writing skills essential for successfully transitioning from secondary education or community contexts into tertiary study. Content focuses on practical application study skills for the health sciences, including time management techniques, academic reading, writing and planning, professional and communication skills, and test and examination techniques.

Introduction to Mathematics

Provides foundation skills in mathematics and develops mathematical competence. Topics covered include measurement, notation, functions, equations, exponential growth/decay, logarithms and statistics. Examples used in the course will revolve around applications of mathematics in the health sciences.

Semester Two

Introduction to Anatomy and Physiology

Introduction to human biology through a study of the structure and function of mammalian organ systems. Topics of focus include: skin and derivatives, digestive, nervous, reproductive and urinary, bone, endocrine and circulatory systems. This course also exposes students to learning in a laboratory environment with a strong focus on microscopy and dissection.

Introduction to Chemistry 2

Provides an overview of systematic organic chemistry illustrating the diversity and reactivity of organic compounds, including reaction mechanisms and application of chemical kinetics. Spectroscopic techniques will be discussed, including in relation to structure determination. A quantitative study of proton transfer reactions will allow for understanding of control of pH.

Introduction to Population Health 2

Explores patterns and distributions in health events, causal effects on health, and strategies for addressing health inequalities and inequities at a population level. Exposure to a foundational overview of epidemiology and population health concepts and relevant skills, including understanding and measuring the distribution of disease and illness in well-defined populations, will also be provided.

Academic and Professional Development in Māori and Pacific Health 2

Provides study and academic skills necessary for successfully transitioning from foundation study to first-year bachelor-level study. Content focuses on a practical application of Population Health and Māori and Pacific health workforce development while engaging students in their professional practice, cultural growth, leadership, and communication.

Introduction to Physics

An introduction to physics relevant to health studies, including examples and illustrations that revolve around human physiology. Topics include mechanics, optics, waves, thermal physics, radiation and electricity.

Expectations of CertHSc students

Students are expected to take responsibility for their learning.

Completing the CertHSc does not guarantee your entry to any health professional training programme, however, it does provide you with a University Entrance-equivalent qualification that is necessary for acceptance into tertiary degree-level study.

When you apply for entry to a degree programme, the grade point average in the Certificate will show your ability to undertake university study successfully.



“The CertHSc taught me specific skills such as study planning and exam preparation; it also helped me to mature as a student by becoming more disciplined with my study habits.”

“I really enjoyed learning more about specific health inequalities and issues for Māori and Pacific communities as this is something I am very passionate about addressing.”

“While I was accepted into all of the programs I applied for (including health science and biomed), I took the advice to start with studying the CertHSc; I’m thankful for this advice.”

Jerome Mika

Māori, Ngāti Awa, Ngai Tuhoe, and Te Whānau-ā-Apanui

Samoa, Moata’a, Lelepa

Graduate: Hikitia Te Ora – Certificate in Health Sciences – (CertHSc), Whakapiki Ake (WAP)

Student: Bachelor of Medicine and Bachelor of Surgery (MBChB)

 fmhs.auckland.ac.nz/mapas

The Whakapiki Ake Project (WAP)

Kaupapa Māori Recruitment: Whakapiki Ake (WAP) is a recruitment project that actively engages with rangatahi Māori and whānau enrolled in secondary schools to promote health as a career and entry into Faculty of Medical and Health Sciences programmes. WAP operates within a kaupapa Māori framework.

Eligibility and registration for Whakapiki Ake

To check your eligibility for Whakapiki Ake visit:

www.maorihealthcareers.auckland.ac.nz

If you are eligible, use the registration link on the webpage to register.

Note: Applications are required when applying for specific WAP activities, i.e., COACH, MASH. We will notify you about these wānanga.

Whakapiki Ake offers

WAP offers exposure to health career options, academic enrichment and transitioning programmes, some financial support and Māori leadership development. WAP primarily works with secondary school students, however mature students may be eligible for WAP support. Whakapiki Ake also actively engages with whānau. Our key activities are listed below.

Hui ā Kura Year 9–11

Whakapiki Ake visit Year 9–11 rangatahi between July and September. These visits use interactive workshops and are designed to encourage rangatahi to think seriously about cultural identity, sense of self, choices, decision making and learning to learn to help uncover their future potential. All are key prerequisites to career decision making.

Te Whē – Years 10 & 11

Provides exposure to science, Māori role models and potential career choices and health pathways. The goal is to raise awareness about the importance of the core secondary school subjects and the choices rangatahi are making in these early years. The one day interactive programme reaffirms the importance of cultural identity and supports rangatahi to aspire to fulfil their future potential. A Year 10 and 11 programme are held in Auckland and Tauranga and a Year 11, in Whakatane

Hui ā Kura Year 12 and 13 students

The WAP team visit across the North Island to present to rangatahi who indicate an interest in career in health and ideally taking two or three applied sciences (Biology, Chemistry, Physics) at Level 2 or 3 (IB or CIE equivalent), Mathematics and an English-rich subject. These presentations are student-centered and focus on academic pathways to a career in health.

MASH (Māori Achieving Success in Health)

MASH is a four-day, Year 12 academic enrichment wānanga held at Waipapa Marae, the University of Auckland. Māori students who are interested in a career in health, and have exposure to NCEA Level 2 applied sciences (Biology, Chemistry, Physics), Mathematics and English (or IB or CIE equivalent) are eligible to apply.

COACH (Creating Opportunities for A Career in Health)

COACH is a four-day, Year 13 transitioning wānanga held at Waipapa Marae, the University of Auckland. Māori students who are interested in a career in health and have exposure to NCEA Level 2 and Level 3 in applied sciences (Biology, Chemistry, Physics), Mathematics and English-rich subjects (or IB or CIE equivalent) are eligible to apply. The programme is for students intending to enrol in an FMHS programme at the University of Auckland the following year.

WAP Hui ā Rohe

The WAP team undertake regional visits throughout the year to connect with WAP rangatahi (Year 9–13) and their whānau, iwi, schools and other interested groups.

At these hui we cover the following:

- Maximising school impact of choices at Year 8–11
- How NCEA/UE works
- Academic pathways
- Prepping Year 12–13 for health sciences
- Key tips for tertiary study and application assistance

WAP Year 13 Application Assistance

WAP provides Year 13 students with application assistance to relevant programmes in the Faculty of Medical Health Sciences.

This assistance includes:

- Programme applications (CertHSc, BHSc, BNurs)
- MAPAS MHO4 Application
- Halls of residence applications
- Scholarship information
- Matriculation and enrolment into FMHS programmes

WAP Academic Support

WAP rangatahi who attend MASH or COACH are offered academic support via an individual plan.

This support is inclusive of online academic assistance (Physics, Chemistry, Mathematics NCEA Level 2 and 3 and English NCEA Level 2). Contact us for more information.

WAP Wānanga

Year 12 and 13 WAP students are invited to attend a four-day academic exam preparation wānanga prior to NCEA external examinations.

Next Steps to Uni!

WAP students and whānau are eligible to stay two nights in a University Hall of Residence when attending the (WAP) MAPAS General Interviews day. This provides an opportunity for whānau to meet and students to reconnect. WAP will provide return transport from the hall of residence to the MAPAS General Interviews. After MAPAS interviews, whānau and students are given an opportunity to reflect on the day and their provisional recommendations. All meals are provided.

'Next Steps to Uni' dates are advertised on our Facebook page.

Whānau Handover Dinner

WAP host a dinner for whānau and students in February. All WAP students who have successfully enrolled in an FMHS programme are eligible to attend the Whānau Handover Dinner.

The Whānau Handover dinner usually takes place mid-late February. All invitation will sent upon completion of enrolment into an FMHS programme.

Student financial support

Students supported by WAP in their first year of study receive a financial package that contributes to accommodation and living costs. The exact amount offered to students depends on their programme and the number of students accepted under WAP in any given year.

Semester One and Two WAP Check-in

Transitioning support continues with semester check-ins for all WAP students enrolled within FMHS programmes.

Social media

WAP uses Facebook as a way to communicate with WAP rangatahi and whānau. We post regular updates on key events and activities.



Facebook
and our website

facebook.com/whakapikiake.whanau

Instagram [@whakapikiake.whanau](https://www.instagram.com/whakapikiake.whanau)

www.maorihealthcareers.auckland.ac.nz



Left to right: Sharnee Breingan Ngāi Te Rangī (Bachelor of Pharmacy), Grace Heays Ngāti Awa & Ngai Tūhoe (Bachelor of Health Sciences) and Ariana Kereopa (Bachelor of Pharmacy).

Early Exposure

Transitioning

Retention

Te Whē Potential Year 9	Te Kune Developmental Year 10	Wao Nui Choices Year 11	Te Rea Growth Year 12	Te Aka To reach out Year 13	Te Weu Take root Hikitia te Ora	Te More Embed First Year (FY)
-------------------------	-------------------------------	-------------------------	-----------------------	-----------------------------	---------------------------------	-------------------------------

Secondary School

Raising awareness. Exposure to health career opportunities

WAP collaborations with internal and external stakeholders

Register with WAP online

WAP Hui ā Rohe

Social media

WAP Hui ā Kura

Clear and accessible information about career choices and school subjects

WAP collaborations with internal and external stakeholders

Register with WAP online

Te Whē (Auckland)

WAP Hui ā Rohe

Social media

WAP Hui ā Kura

Te Whē (Tauranga)

Subject choice is key: applied Sciences, Maths and English

WAP collaborations with internal and external stakeholders

Register with WAP online

Te Whē (Auckland)

WAP Hui ā Rohe

Social media

Te Whē (Whakatane and Tauranga)

WAP Hui ā Kura

Te Whē (Tauranga)

Te Whē (Whakatane)

Aim for excellence. Academic, social and cultural growth

Register with WAP online

WAP Hui ā Kura

Social media

MASH

WAP Academic Support

WAP Hui ā Rohe

WAP Wānanga Auckland

The decision to move into tertiary study requires support

Register with WAP online

WAP Hui ā Kura

Social media

COACH

WAP Academic Online Support

WAP Hui ā Rohe

WAP Wānanga Auckland

Application assistance

Next Steps to Uni

MAPAS General Interviews

Preparation for successful degree study and choice of study

Whānau Handover Dinner

WAP Check- in Semester One

WAP Check- in Semester Two

Social media

MAPAS supports all WAP students

Student financial support

Preparation for successful study and career pathway

Whānau Handover Dinner

WAP Check- in Semester One

WAP Check- in Semester Two

Social media

MAPAS supports all WAP students

Student Financial Support

Tertiary



“The things I have learnt throughout my experience at UoA have changed me as a person. My perspective has developed so much since being here and I’m very grateful for the opportunity to continuously grow not only academically as a student but also as a person in general.”

“My experience with MAPAS staff and peers has been nothing but positive and has contributed to my still being at uni. I grew up in a predominantly white area so to be given the opportunity to be surrounded by people who look like me and who share similar values are something I am very thankful for.”

“The CertHsc was an introduction to university that I definitely needed. It provided a perfect transition from high school to uni and I am very grateful that I made the decision to be a part of it.”

“My biggest take away from the programme was the cultural aspect of it all. It was the first time I had been exposed to my culture as a Pacific-Māori wāhine within an academic setting.”

Alesha Nathan

Ngāpuhi

Kolofo’ou (Tonga)

Graduate: Hikitia Te Ora – Certificate in Health Sciences – (CertHSc), Whakapiki Ake (WAP), Bachelor of Health Sciences (BHSc)

Student: Master of Health Leadership (MHL)

fmhs.auckland.ac.nz/whakapiki-ake

“I have been a part of Whakapiki Ake, MAPAS and the Certificate in Health Sciences. The most important aspect for me is the connections I have made even before arriving in Auckland. I think the biggest struggle for students who come from outside of Auckland is moving out of their comfort zone, away from family and friends. Being able to build relationships is the most important aspect, especially for te iwi Māori.”

“I am very glad I did the Certificate in Health Sciences as it has given me the opportunity to learn how to study, how the university works, and learn how to transition into being an adult.”

“I hope to become a doctor one day, but I’m currently studying towards a Bachelor of Nursing. This means I work in an area based around person-centred care, where our main priority is to advocate holistic care for our patients.”

“What I like most about the nursing is the insight I have gained into the importance of nurses. Nurses are caring for patients for their entire shift.”

Nikora Wade

Ngāti Tūwharetoa, Tuhourangi, Ngāpuhi,
Ngāi Tūhoe

Graduate: Hikitia Te Ora – Certificate in
Health Sciences – (CertHSc), Whakapiki
Ake (WAP)

Student: Bachelor of Nursing (BNurs)

 auckland.ac.nz/certhsc



Student Services

Student Centre

The Faculty of Medical and Health Sciences has its own Student Centre, dedicated to addressing student needs. The Student Centre is located on the ground floor of the faculty's Grafton Campus.

Staff can assist in a broad range of areas, including admissions, enrolments, scholarships, examinations, graduation, personal welfare, and accessing University-wide services. Confidential advice and assistance is also available.

In addition, information on services such as books, careers and employment, disability services, students' associations, student health services and childcare can be accessed online at:

www.auckland.ac.nz/studentssupport

For a list of scholarship opportunities visit:

www.scholarships.auckland.ac.nz

To view our range of accommodation options visit:

www.accommodation.auckland.ac.nz

Visit us at Grafton Campus:

Ground Floor, Grafton Atrium, Building 503
Faculty of Medical and Health Sciences
85 Park Road, Grafton

Open: Monday to Friday 8.30am-4.30pm

Phone: +64 9 923 4888

Email: fmhs@auckland.ac.nz

Grafton Campus

Grafton Campus is situated in the central city suburb of Grafton; the campus itself is adjacent to the Auckland Domain and opposite the Auckland Hospital. A 15-minute walk from Grafton brings students to the University's City Campus where a number of undergraduate lectures take place.

Grafton Campus is the base for students of the Medicine, Nursing, Optometry and Pharmacy programmes.

The faculty shares a close relationship with New Zealand's finest specialist hospitals through strategic alliances with major district health boards, providing students with unparalleled access to environments of clinical excellence.

www.fmhs.auckland.ac.nz/grafton

Library and Information Commons

The Philson Library

The Philson Library at Grafton Campus is the University of Auckland's Medical and Health Sciences Library, housing the main print collections in this area. The library has invested heavily in electronic resources and the library website provides internet access to a wide range of electronic databases, e-journals and e-books. Librarians are available to assist students to learn about and access the information they require for study and research. Facilities include computers, printing and photocopying.

www.library.auckland.ac.nz/about/philson

The Grafton Information Commons

The Grafton Information Commons offers students access to more than 100 computers as well as borrowable laptops, all of which provide access to a wide range of software. In addition, there are scanners, photocopiers and printers as well as a Helpdesk Service, group study areas and casual seating.

Libraries and Learning Services

www.library.auckland.ac.nz



How to apply

Apply online to an FMHS programme(s)

- www.auckland.ac.nz/applynow
- Tick the 'Entrance Scheme' boxes if you wish to be considered for MAPAS.
- The Admissions Office will email you confirming your application(s) along with a request for further documentation from you. You must submit this documentation to complete your application.

APPLY TO MAPAS BY COMPLETING AN MH04 FORM

- Apply online at www.fmhs.auckland.ac.nz/mapasmh04
- For school leavers, we require your NZQA 'My Results Summary'.
- For all other applicants, we require your NZQA 'My Results Summary' and any official transcripts of other study you have undertaken.

Both can be attached to your online application to MAPAS, or email a copy to: mapas@auckland.ac.nz

MAPAS will email you an acknowledgement receipt once we have your form. All information must be received and ancestry confirmed as eligible prior to interview bookings or assessment for interview.

If you are eligible for MAPAS

MAPAS General Interviews

If you have applied to CertHSc, BHSc or BNurs you will be able to book an interview online. You will be emailed confirmation of interview details.

MAPAS Specialty Interviews

If you have applied to MBChB, BOptom, BMedImag(Hons) or BPharm your application along with your academic record will be assessed to determine if you are offered a MAPAS Specialty Interview. You will be emailed the outcome of this assessment.

For further information on the interview process, and what happens next please refer to pg.6-7 in this brochure.



“What I like best about this faculty is that there is a support system in place for Māori and Pacific students (MAPAS). There are academic advisors that look out for you, and academic support services and pastoral support services as well. I like that there is a designated place where we can study no matter what degree you take; there will always be someone there who to help you.”

“I chose to study at the University of Auckland because of its strong reputation for quality teaching and for its strong Pacific student support network. The University provides different social and cultural clubs that enhance students’ learning and to embrace where they come from and further their interests.”


“I enjoyed my first year completing the Certificate in Health Sciences. It had a smaller cohort which allowed me to be more comfortable and familiar with everyone. During that year, I got to study and learn with students who were Māori and Pacific, created long-lasting friendships and delve into the history of Aotearoa and the impacts of various events.”

Lili-Ole-Vanu Netina Latu

Samoan, Fogapoa and Safune

Graduate: Hikitia Te Ora – Certificate in Health Sciences (CertHSc)

Student: Bachelor of Health Sciences (BHSc)

 fmhs.auckland.ac.nz/maori-pacific-support



Whakapiki Ake 2021 Dinner celebrates student and whanau success to beginning the tertiary journey towards becoming a future Māori health professional.



Contacts

Vision 20:20

Director Vision 20:20
Associate Professor Elana Curtis
Phone: +64 9 923 6470
Email: e.curtis@auckland.ac.nz

The Whakapiki Ake Project (WAP)
www.maorihealthcareers.auckland.ac.nz
Phone: 0800 20 20 99 – option 5
Email: whakapikiake@auckland.ac.nz

Māori and Pacific Admission Scheme (MAPAS)
Phone: 0800 20 20 99
Email: mapas@auckland.ac.nz

Or visit our website for specific coordinator details for each programme.
www.fmhs.auckland.ac.nz/mapas

Physical Address:
MAPAS Office
Level 5, 93 Grafton Road, Grafton

Certificate in Health Sciences
Phone: 0800 20 20 99 – option 1
Email: certificate@auckland.ac.nz

Useful contacts

Faculty website
www.fmhs.auckland.ac.nz

Student Centre
Faculty Student Centre
Ground Floor, Building 503
85 Park Road, Grafton
Auckland
Phone: +64 9 923 2760
Email: fmhs@auckland.ac.nz

Scholarships
www.scholarships.auckland.ac.nz

MAPAS Scholarship Information
www.fmhs.auckland.ac.nz/mapasscholarshipsinformation

Hauora Māori Scholarship
www.health.govt.nz/our-work/populations/maori-health/hauora-maori-scholarships-2016

Pacific Health
www.health.govt.nz

Ministry of Health
www.health.govt.nz

Privacy

The University of Auckland undertakes to collect, store, use and disclose your information in accordance with the provisions of the Privacy Act 1993. Further details of how the University handles your information are set out in a brochure available by phoning 0800 61 62 63.

Disclaimer

Although every reasonable effort is made to ensure accuracy, the information in this document is provided as a general guide only for students and is subject to alteration. All students enrolling at the University of Auckland must consult its official document, the current Calendar of the University of Auckland, to ensure that they are aware of and comply with all regulations, requirements and policies.

We advise that the University of Auckland is not involved in the employment of completing health professional students and can make no guarantee of post-qualification registration or employment in New Zealand or any other country.





THE UNIVERSITY OF
AUCKLAND
Te Whare Wānanga o Tāmaki Makaurau
NEW ZEALAND

Contact

Faculty of Medical and Health Sciences
The University of Auckland
Private Bag 92019
Auckland
New Zealand

Phone: 0800 20 20 99

Email: mapas@auckland.ac.nz

fmhs@auckland.ac.nz

Web: www.fmhs.auckland.ac.nz/tk/m/vision



fmhs.auckland.ac.nz