

Nursing

Postgraduate Handbook 2025



**UNIVERSITY OF
AUCKLAND**
Waipapa Taumata Rau
NEW ZEALAND

**MEDICAL AND
HEALTH SCIENCES**
SCHOOL OF NURSING

Nau mai, Haere mai ki Te Kura Tapuhi o Waipapa Taumata Rau

A warm welcome to the School of Nursing

Haere mai Hakatau mai ra koutou ki Te Kura Tapuhi ki te hakanui atu o koutou matauranga mo nga mahi o nga neehi. Ko nga Kaiako e awhi e tautoko ia koutou mai te timatanga tae noa ki te whakamutunga i o koutou mahi ki Te Kura Tapuhi. Ko to matou hiahia kua eke koutou ki nga taumata mo te tangata mo a muri nei. No reira Huri noa Huri noa Tena tatou katoa.

Ngā mihi

We are so excited to welcome you to our School of Nursing whānau. The school is full of vibrant and dynamic people who are dedicated to your learning and growth. We are committed to providing a warm and welcoming environment for our students and staff, and if there is anything we can do to help you get started on your postgraduate journey, please do not hesitate to ask. We are here to help you start your journey today and will continue to support you to become the person you want to be tomorrow.

WHAEA ERANA POULSEN

Ngapuhi Nui Tonu, Ngāi Tūhoe,
Tainui me Ngāti Porou
Te Kura Tapuhi | School of Nursing
Mātauranga Hauora |
Faculty of Medical and Health Sciences
Waipapa Taumata Rau | University of Auckland

ASSOCIATE PROFESSOR JULIA SLARK RN, PhD

Urumatua o te Kura | Head of School
Te Kura Tapuhi | School of Nursing
Mātauranga Hauora |
Faculty of Medical and Health Sciences
Waipapa Taumata Rau | University of Auckland



Contents

Our postgraduate programmes	4 – 5
Early postgraduate study	6
Masters study	7 – 8
Doctoral study	9
Course descriptions	10 – 13
Mental Health and Addiction	14 – 15
Child and Youth Health	16 – 17
Palliative Care	18
Educational Pathway for Registered Nurse Designated Prescriber	19
Educational Pathway for Nurse Practitioner	20
How to apply	22 – 24
Helpful information	25
• Awards, scholarships and grants	
• External funding	
• Resources for Postgraduate Nursing students	
Schedules and prescriptions 2025	27

**Our
programmes
have been developed
to enhance nursing
practice and focus on the
improvement of patient
outcomes and the
health of all New
Zealanders.**

Find out more
auckland.ac.nz/fmhs/son

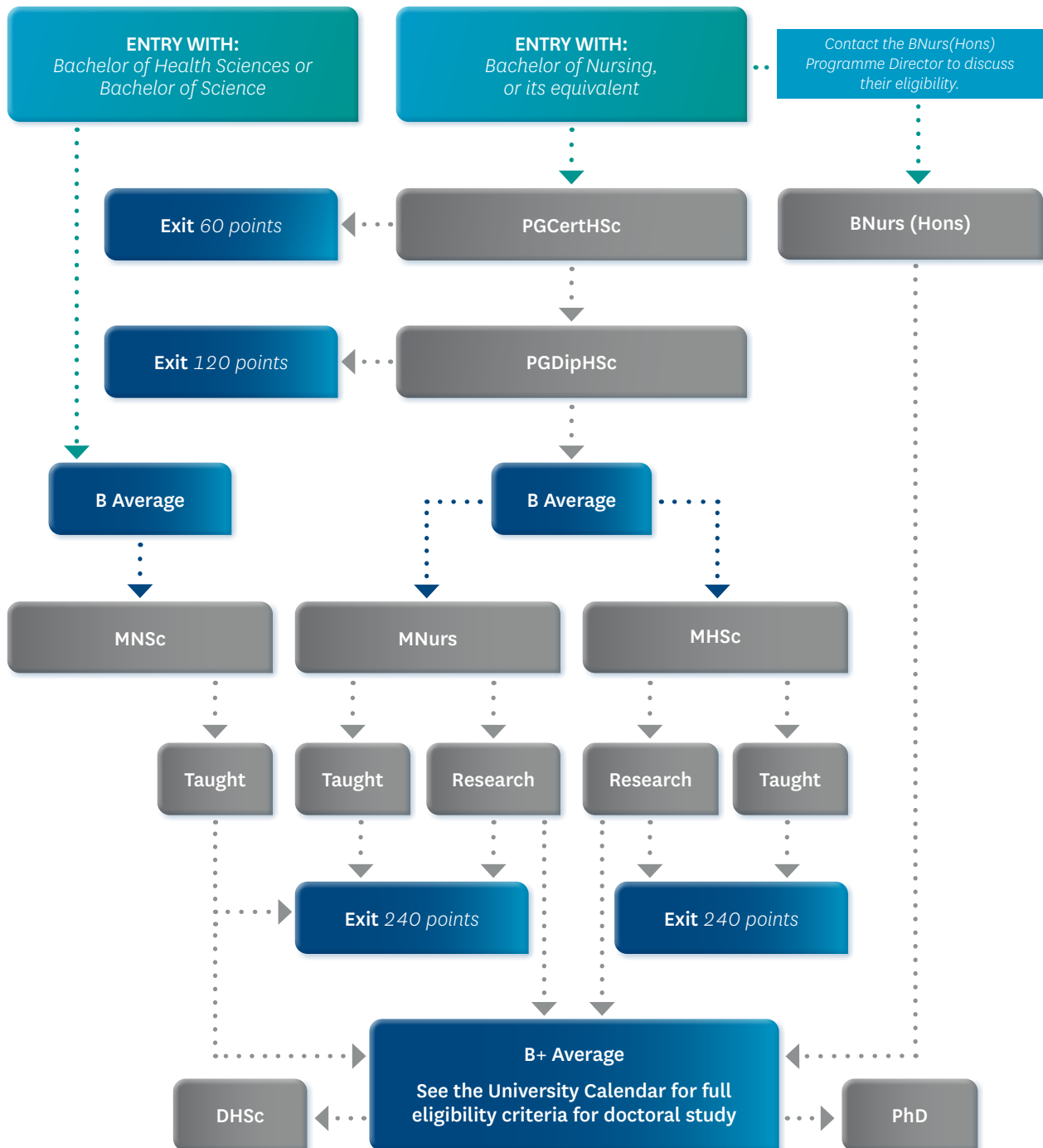
Privacy: The University of Auckland undertakes to collect, store, use and disclose your information in accordance with the provisions of the Privacy Act 2020. Further details of how the University handles your information are set out in a brochure available from your local Student Hub or you could phone us on 0800 61 62 63.

Disclaimer: Although every reasonable effort is made to ensure accuracy, the information in this document is provided only as a general guide for students and is subject to alteration. All students enrolling at the University of Auckland must consult its official document, the current Calendar of the University of Auckland, to ensure that they are aware of and comply with all regulations, requirements and policies.

Publication date: July 2024

Our postgraduate programmes

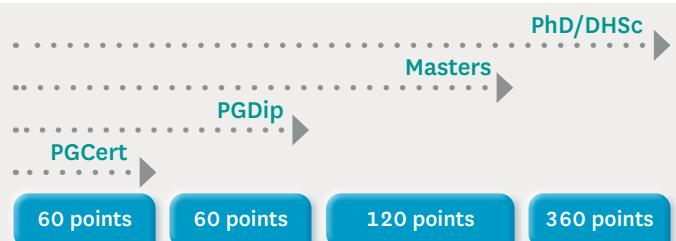
Postgraduate study enables you to deepen your understanding, develop specialist skills and knowledge, follow your passion for research, stand out in a competitive job market or change careers. We offer a wide range of postgraduate nursing programmes to help you reach your goals. Below is a flow chart of possible pathways for your postgraduate nursing study.



MNurs Eligibility

Note: If you are interested in the MNurs but do not have the required GPA (B average), please contact the School of Nursing to explore your options.

Email: postgradnursing@auckland.ac.nz



Entry and progression requirements

For entry into any postgraduate nursing programme, you must:

- have either completed an appropriate undergraduate degree or hold a professional nursing qualification
- hold nursing registration
- hold a current New Zealand practising certificate
- have had recent clinical nursing experience

Generally, initial enrolment is into Postgraduate Certificate in Health Sciences (PGCertHSc). On completion of the PGCertHSc, you may apply to have the certificate issued and graduate, or explore further study and enrol in the PGDipHSc. Upon completion of the PGDipHSc, you may apply to have the qualification awarded and graduate. If you meet the entry GPA (5.0/B average) for Masters study, you can apply for either the MNurs or MHSc.

Completion times

Most of our postgraduate students complete their studies part-time due to work and other commitments. It is wise to take note of completion and progression requirement timeframes and seek advice from the School of Nursing to ensure you can meet University regulatory requirements. If you have a need to complete your postgraduate study in a full-time capacity, please contact the School of Nursing.

Qualification	Full-time	Part-time
Honours degree	No full time option available	4 semesters (2 years)
Postgraduate Certificate	1 semester	4 semesters (2 years)
Postgraduate Diploma	2 semesters (1 year)	8 semesters (4 years)
Postgraduate Diploma (entered with credit)	1 semester	4 semesters (2 years)
Masters (research – all 120 & 90-point thesis/research portfolio)	2 semesters (1 year)	4 semesters (2 years) Study must be continuous
Masters (taught 120-point)	2 semesters (1 year)	8 semesters (4 years)
Master of Nursing Science (240-point)	4 semesters (2 years)	No part-time option
Doctor of Health Sciences	No full time option first 2 years. Thesis component can be completed 2 years full time.	4–6 years
Doctor of Philosophy	3–4 years	6–8 years

Credit points

120 credit points at Waipapa Taumata Rau | The University of Auckland equates to a full-time academic year. One full-time semester is, therefore, 60 points. Postgraduate courses in the school are usually 30 points.

Credit transfer

This information will be of interest to all nurses who have undertaken postgraduate study at other universities, including NETP programmes, and who wish to continue their studies at Waipapa Taumata Rau | The University of Auckland.

Our current regulations state that:

- Credit from another institution can only be credited to a Masters or a PGDip, not a PGCert.
- Credit of 30 points from another institution must be into a Masters or PGDip and must be within 3 semesters of commencing the course for which credit is sought.
- Credit of a completed PGCert must be into a PGDip and must be done within 5 years of completing the PGCert.
- If a student has completed either a 30-point course or a PGCert and wishes to transfer to Waipapa Taumata Rau | The University of Auckland, they must contact our postgraduate Academic Advisors prior to applying to the University. This will ensure that they receive the best advice for their individual pathway of study.

Grade Point Average

The following table can be used to guide the Grade Point Average (GPA) calculation.

9	A+
8	A
7	A-
6	B+
5	B
4	B-
3	C+
2	C
1	C-
0	D+
0	D
0	D-
0	F

The University Calendar

The most up-to-date regulations can be found in the University Calendar

calendar.auckland.ac.nz

Course selection advice

Waipapa Taumata Rau | The University of Auckland offers a range of courses tailored to meet the needs of a variety of disciplines within Nursing. These can include research, leadership, education, mental health, paediatrics, older adult health, primary health care, specialty clinical courses, and courses tailored to the Registered Nurse Designated Prescribing and Nurse Practitioner Training Pathways. The School of Nursing provides a student-centric approach of course advice to facilitate course selection that meets the needs of the student's career goals and the populations they serve.

Contact

To connect with an Academic Advisor from any of these areas, please indicate what type of course advice you are seeking by emailing: postgradnursing@auckland.ac.nz

For returning students, please include your student ID number.

Early postgraduate study

If you are new to postgraduate study, you may want to follow the pathway that most of our nursing students take – enrolling in a postgraduate certificate, followed by a postgraduate diploma. If you are eligible and wish to, you may consider progressing to a Master of Nursing.

Our PGCertHSc (Advanced Nursing, Mental Health Nursing), PGDipHSc (Advanced Nursing, Mental Health Nursing), and MNurs programmes are approved by Te Kaunihera Tapuhi o Aotearoa | the Nursing Council of New Zealand as appropriate educational preparation for advanced nursing practice.

Postgraduate Certificate in Health Sciences

(PGCertHSc) (60 points)

The PGCertHSc allows students to start their postgraduate study with us from a wide range of courses found in this book.

Specialisations:

When applying for this programme, students should choose between these two specialisations:

- Advanced Nursing
- Mental Health Nursing

Entry requirements:

Registered Nurse registration with Te Kaunihera Tapuhi o Aotearoa | the Nursing Council of New Zealand and a current practising certificate.

Structure/content:

60 points from page 27.

Progression:

May have the qualification awarded. May also proceed to a PGDipHSc with credit, so long as it commences within five years of completing the PGCertHSc.

Contact

postgradnursing@auckland.ac.nz

Postgraduate Diploma in Health Sciences

(PGDipHSc) (120 points)

The PGDipHSc allows students to start or continue their postgraduate study with us from a wide range of courses found in this book.

Specialisations:

When applying for this programme, students should choose between these two specialisations:

- Advanced Nursing
- Mental Health Nursing

Entry requirements:

Registered Nurse registration with Te Kaunihera Tapuhi o Aotearoa | the Nursing Council of New Zealand, and a current practising certificate.

Structure/content:

120 points from page 27; if students have completed a PGCert at Waipapa Taumata Rau | The University of Auckland within the last five years, they can have the 60 points from it internally credited to the PGDip and will only have to complete a further 60 points.

Progression:

May have the qualification awarded. May also apply for a master's programme if they attained a B average (GPA 5) or higher.

Note: If you are interested in the MNurs but do not have the required GPA (B average), please contact the School of Nursing to explore your options.

Left: Rachel Lampkin, Professional Teaching Fellow, teaching postgraduate students.

Bachelor of Nursing (Honours)

(BNurs(Hons)) (120 points)

The Bachelor of Nursing (Honours) programme is for students who wish to pursue an academic career, and may be used to fast-track the student into doctoral study. This programme provides students with an in-depth understanding of undertaking research in the health sector. Building on learnings from Evidence-based Practice and Implementation (NURSING 746) and Research Methods in Nursing and Health (NURSING 782), students are supported to operationalise their research through completion of an ethics application as well as collecting and analysing data.

Entry requirements:

Students are to contact the BNurs(Hons) Programme Director to discuss their eligibility.

Structure/content:

BNurs(Hons) is four semesters of continuous study. Students can commence their programme in either semester one or semester two.

Semester 1

NURSING 746 – Evidence-based Practice and Implementation – Level 9 (30 points)

Semester 2

NURSING 782 – Research Methods in Nursing and Health (30 points)

Semester 3

HLTHSCI 715 – Research in Practice (30 points)

Semester 4

HLTHSCI 789 – Research Project – Level 9 (30 points)

Progression

There is potential to progress to doctoral study (the PhD or DHSc), see the University Calendar for eligibility criteria.

Contact

j.robinson@auckland.ac.nz

For further information on the BNurs(Hons), including eligibility, please contact the BNurs(Hons) Programme Director.



Masters study

We offer two masters degrees that will enable you to increase your knowledge in your chosen field, gain a professionally accredited qualification, or follow your passion for research while gaining an advanced qualification. We also offer the Master of Nursing Science, which is a pre-registration programme that enables non-Registered Nurses, with a relevant undergraduate degree, the opportunity to become a Registered Nurse in Aotearoa-New Zealand.

Research Masters (120 points)			Taught Masters (120 points)		
NURSING 796 Thesis (120 points) ¹	NURSING 797 Research Portfolio (120 points) ¹	NURSING 782 Research Methods (30 points) + NURSING 790 Research Portfolio (90 points) ¹	NURSING 795 A/B Dissertation* (60 points) ³ + 60 more points of taught courses	NURSING 701 Research Project (30 points) ^{2,3} + NURSING 746 Evidence based practice (30 points) ³ + 60 more points of taught courses	NURSING 701 Research Project (30 points) ^{2,3} + NURSING 785 Pharmacotherapeutics (30 points) ³ + 60 more points of taught courses
Part-time 4 semesters/full-time 2 semesters – continuous study <small>¹Need to have completed a research methods course prior to commencing</small>			Part-time 8 semesters/full-time 2 semesters <small>²HLTHSCI 789 can be taken as an alternative to NURSING 701 ³60 points of courses taken must be at level 9 – Level 9 course *Preferred pathway for Non-Nurse Practitioner students is the Dissertation</small>		

Master of Nursing

(MNurs) (120 points)

This programme is aimed at Registered Nurses seeking to advance their clinical knowledge and skills.

Entry requirements:

Students must hold current registration as a nurse in Aotearoa-New Zealand and have a B average (GPA 5) or higher in one of the following qualifications:

- Bachelor of Nursing (Honours)
- PGDipHSc specialisation in Advanced Nursing (or their equivalent)

Options:

Students can decide between the following two options:

- Research (120 points)
- Taught (120 points)

Note: If you are interested in the MNurs but do not have the required GPA (B average), please contact the School of Nursing to explore your options.

Option 1: Master of Nursing (Research)

Structure/content:

Research 120 points (study must be continuous)

- NURSING 796 Thesis (120 points, must have completed an approved research methods course prior to entering the programme)

OR

- NURSING 797 Research Portfolio (120 points, must have completed an approved research methods course prior to entering the programme)

OR

- NURSING 790 Research Portfolio (90 points) + NURSING 782 Research Methods in Nursing and Health (30 points, or equivalent research course)

What does Masters Research entail?

For both the research portfolio and the thesis, you will be assisted by a supervisor from the School of Nursing.

What is a 90-point Research Portfolio?

A research portfolio represents a coherent, rigorous research-based collection of linked scholarly work related to a specified area of specialisation or scope of practice. It will be about 30,000 words in length (including tables, figures and references). The portfolio is presented for examination at the completion of the work in the same manner as a thesis. A research portfolio must address a clearly articulated research question and include a rationale for all elements of the portfolio.

The portfolio may include one or more of: a critical review of literature; one or two small studies or clinical projects, or maybe an audit of a taught course related to the area of study.

Normally the portfolio will require the collection of primary data through interviewing, survey, documents etc. A portfolio may include a rework of a conference presentation and/or paper prepared for publication.

What is a 120-point Masters Thesis?

A 120-point thesis is conducted over one academic year (full-time) or two years (part-time) and represents one full-time year's work. Length will vary with the nature of the topic, but it is expected that most theses will be about 40,000 words (including tables, figures and references).

The learning outcome of a thesis is that the student demonstrates an ability to conduct research that makes an original contribution to knowledge.

The thesis should provide a coherent and competently organised document forming a conclusive piece of work. The thesis will include the rationale for the study, a review of the relevant literature, the research question, aim and objectives, methodology, findings and discussion, including the study's implications and recommendations for theory and/or practice.

Contact

postgradnursing@auckland.ac.nz

Please contact the School of Nursing to discuss your master's plan before applying for the programme.

Option 2: Master of Nursing (Taught)

Structure/content:

Taught 120 points (study does not have to be continuous, but needs to be completed within the timeframes stipulated on page 5).

- NURSING 795 Dissertation (60 points)

AND

- 60 points from page 27

OR

30 points from either:

- NURSING 701 Research Project (30 points)
- HLTHSCI 789 Research Project (30 points)

AND

30 points from either:

- NURSING 785 Clinical Reasoning in Pharmacotherapeutics (30 points)
- NURSING 746 Evidence-based Practice and Implementation (30 points)
- NURSING 740 Nurse Practitioner Prescribing Practicum (30 points)

AND

60 points from page 27

The key to being eligible to graduate with your MNurs is to ensure that your taught master's degree includes a minimum of 60 points of level 9 courses. There are three primary ways to achieve this, demonstrated in the picture on page 7.

If you are not completing NURSING 795 A/B (Dissertation), it becomes mandatory to include either NURSING 701 (Research Project) OR HLTHSCI 789 (Research Project) in your MNurs (taught) qualification.



Above: Poutaki Māori, Erana Poulsen (left) and Head of School, Julia Slark (centre) at the pōwhiri for Josephine Davis (right), welcoming her into her new role as Associate Head Māori for the School of Nursing. Josephine Davis – He uri ahau o Ngāti Kopaki, Ngāti Manu me Ngāti Whātua Ōrakei. Erana Poulsen – Ngapuhī Nui Tonu, Ngāi Tūhoe, Tainui me Ngāti Porou.

Master of Health Sciences

(MHSc, 120 points)

This programme is aimed at health professionals who wish to pursue postgraduate study and work in a range of settings, not necessarily clinical nursing practice, such as education, research and management. This qualification is also appropriate for other health professionals who wish to pursue postgraduate study and advanced roles in health-related fields. They may select from a broader range of courses, including multidisciplinary courses.

Entry requirements:

To be eligible to enter a 120 point MHSc, an applicant must have completed a PGDip (or equivalent qualification) with a B average (GPA 5) or higher.

Options:

Students can decide between the following two options:

- Research (120 points)
- Taught (120 points)

Option 1: Master of Health Sciences (Research)

Structure/content:

HLTHSCI 796 Thesis (120 points, must have completed an approved research methods course prior to entering the programme)

OR

HLTHSCI 797 Research Portfolio (120 points, must have completed an approved research methods course prior to entering the programme)

OR

HLTHSCI 793 Research Portfolio (90 points) and 30 points from approved courses listed in the MHSc Schedule (available online).

Option 2: Master of Health Sciences (Taught)

Structure/content:

Taught 120 points

- HLTHSCI 790 Dissertation (60 points)
- And 60 points from the courses listed in the MHSc Schedule, including an approved research methods course if such a course has not already been passed.

Master of Nursing Science

(MNSc, 240 points)

This full-time two-year programme gives graduates with a relevant undergraduate degree the opportunity to complete the requirements to become a Registered Nurse in Aotearoa-New Zealand.

Entry requirements:

Students must have completed a relevant undergraduate degree (such as health sciences or science with some human science subjects, such as physiology and anatomy) with a B average (GPA 5) or higher.

Eligible applicants will also be required to attend a selection interview.

English language proficiency and Fitness to Practise requirements also apply.

Semester 1

NURSING 787 Fundamentals of Nursing Care (30 points) and 224 clinical hours

NURSING 742 Biological Science for Practice (30 points)

Semester 2

NURSPRAC 721 Integrative Nursing Practice (45 points) and 320 clinical hours

MAORIH 701 Foundations of Māori Health (15 points)

Semester 3

NURSING 780 Mental Health and Addiction Nursing (30 points) and 240 clinical hours

NURSING 746 Evidence-based Practice and Implementation (30 points)

Semester 4

NURSPRAC 722 Transition to Professional Nursing Practice (30 points) and 360 clinical hours

NURSING 789 Research Project (30 points)

Doctoral study

There are many reasons that you might consider doing a doctoral degree. Ultimately, doing so means you will have expert-level knowledge in your chosen field and gives you the highest level of degree you can achieve. Doctoral study will allow you to undertake in-depth research and exploration in your chosen area.

A doctoral degree can broaden career opportunities; help you undertake rigorous research; develop your critical thinking skills; sharpen your writing abilities; develop your confidence and ability to advocate for change; develop a research platform; foster national and international collaboration within your area of expertise and help you learn new skills, knowledge, problem-solving and stamina to pursue your aspirations.

Doctor of Health Sciences

(DHSc, 360 points)

Entry requirements:

The entry criteria for the DHSc are extensive. Please see the University Calendar for the full and most up-to-date regulations, which include a B+ (GPA 6) average in the student's most recent attempt at a relevant qualification, i.e. BNHons, master's in a relevant subject area.

Structure/content:

This named doctorate will provide experienced health professionals and leaders working in diverse roles within the health sector with a pathway to a research-based higher degree. Students will address contemporary issues challenging the health sector, influencing local, national and potentially international health policy and practice.

The DHSc comprises a combination of taught courses (120 points) and a thesis (240 points) which will develop candidates' professional understanding and expertise in leadership, research implementation, evaluation and professional practice. The DHSc programme is designed for health professionals and senior leaders in healthcare in Aotearoa-New Zealand who want to continue working while they study.

Doctor of Philosophy

(PhD, 360 points)

Entry requirements:

The entry criteria for the PhD are extensive. Please see the University Calendar for the full and most up-to-date regulations, which include a B+ (GPA 6) average in the student's most recent attempt at a relevant qualification, i.e. BNHons, a master's degree in a relevant subject area.

Structure/content:

The PhD is a well-recognised postgraduate research degree. PhD students are critical, curious, creative thinkers who undertake original research over at least 3 years.

Candidates will undertake independent and original research supervised by academic experts and research leaders. During your doctoral studies, you will have opportunities to expand and develop your personal, professional and academic skills. Our doctoral candidates present their work at local and international conferences and are encouraged to network and collaborate with a wide range of experts in their research field.

You will undertake independent research and submit for examination a 360-point research thesis.

Contact

Please contact the School of Nursing to discuss your doctoral plan before applying for the programme.

Email: SON_Doctoraladvice@auckland.ac.nz

For more information:

Doctor of Philosophy (PhD):
auckland.ac.nz/phd

Doctor of Health Sciences degree (DHSc)
auckland.ac.nz/dhsc

Application Process

auckland.ac.nz/doctoral-applications

Below: PhD candidate Elysabeth Tarihoran (left) with supervisor, Associate Professor Julia Slark (right).



Course descriptions

We have a wide variety of courses available to postgraduate students studying in Mātauranga Hauora – Faculty of Medical and Health Sciences. The NURSING and NURSPRAC (Nursing Practice) courses are facilitated by the School of Nursing. Below you'll find a list of our courses and an indication of what format they're available in – which region, online, dual or blended. An asterisk (*) indicates the courses that need a concession. Our courses that have a focus on Mental Health and Addiction, Child and Youth Health and Palliative Care are found on pages 14, 16 and 18, respectively. You can also find the full schedule of our courses on page 27.

NURSING 701* 30 points

Research Project - Level 9

Semester One – Auckland, Semester Two – Auckland

A personal scholarly exploration of an area of clinical nursing practice that reflects an understanding of research purpose and process. The project includes a critical and comprehensive review of relevant literature which results in new insights and understandings and considers how the application of these might affect existing service delivery or clinical practice models.

NURSING 732 30 points

Leading and Managing Changes in Healthcare

Semester Two – Auckland, Northland

Theoretical and practice principles of leadership and management in the context of healthcare organisations. Utilises an action-based learning model, mentorship and project work.

NURSING 735 30 points

Clinical Education Practicum

Semester Two – Online

Application and critical analysis of educational theories and concepts in a clinical learning environment. Utilises an action-based learning model and project work.

NURSING 740* 30 points

Nurse Practitioner Prescribing Practicum – Level 9 (NPTP)

Semester Two – Auckland

Clinical practicum facilitating mastery of the Nursing Council of New Zealand Nurse Practitioner (NP) competencies for autonomous clinical practice in the Nurse Practitioner scope of practice. Critically analyse clinical cases and develop evidence-informed and innovative solutions through expert consultation and primary literature review. Students will prepare a portfolio demonstrating expert autonomous clinical practice for complex medical and nursing problems.

Prerequisite: NURSING 743 and approval of the Course Director

NURSING 741 30 points

Education for Clinical Practice

Semester One – Auckland (Blended)

Professional learning is essential to enable healthcare professionals to function competently in the complex world of clinical practice. Healthcare professionals are required to become actively involved in teaching colleagues involved in healthcare and patients. Effective clinical teaching and learning is enabled by laying a foundation in educational theory and practice.

NURSING 742 30 points

Biological Science for Practice

Semester One – Online, Semester Two – Online

Focuses on common pathologies acknowledging the New Zealand Health Strategy, giving particular attention to areas where health promotion, preventative care, chronic disease management and cost impact for New Zealand.

NURSING 743* 30 points

Nurse Practitioner Advanced Practicum (NPTP)

Semester One – Auckland

Synthesises advanced clinical decision-making within the Nurse Practitioner competency framework and prepares for autonomous clinical practice.

Prerequisite: NURSING 785 and approval of the Course Director

NURSING 744 30 points

Critical Care Specialty Nursing Practicum (next offered 2026)

Semester Two – Auckland

Gives critical care nurses the opportunity to extend their clinical skills and practice knowledge and to advance clinical decision-making by utilising a range of guided learning experiences. The focus is on continued development of clinical expertise, using a practice development approach emphasising person-centred, evidence-based practice, and critical thinking practice to improve health outcomes.

NURSING 745 30 points

Principles of Medication Management

Semester One (Dual delivery – Auckland or Online)

Semester Two (Dual delivery – Auckland or Online)

Focuses on the principles and practice of medication management to improve and extend the knowledge and skills of Registered Nurses in clinical specialty roles and prepare them for delegated prescribing roles in partnership with clients and collaborating with medical colleagues and the health care team. It is not the intention of this course to prepare nurses for authorised prescribing (nurse practitioner).

Restriction: NURSING 761

**Concession required*

N.B.

1) A prerequisite is a course or requirement that needs to be completed in order to be eligible for a course.

2) If a course is listed as a restriction, it means that the student has done the course in the past under a different course code and are not eligible to enrol in the course.

NURSING 746

30 points

Evidence-based Practice and Implementation – Level 9**Semester One – Auckland, Semester Two – Auckland**

Considers the types of evidence that inform nursing practice and implementation, and examines barriers and enablers to the application of evidence to practice. Provides students with the tools to locate and appraise evidence and requires the student to engage in research activities resulting in a substantial research essay.

Restriction: NURSING 720

NURSING 749

30 points

Special Topic: Whānau Ora Tahī**Semester One – Auckland**

The concept of Whānau Ora is to achieve maximum health and well-being for whānau. This course extends nurses' knowledge to demonstrate an understanding of Whānau Ora in nursing praxis. Through guided learning experiences, clinical and academic support, students will self-reflect on nursing praxis and explore equity and social justice in the context of Te Tiriti o Waitangi.

NURSING 773

30 points

(Adult Health stream)**Advanced Assessment and Clinical Reasoning****Semester One – Auckland, BOP, Northland, Taranaki****Semester Two – Auckland, Northland, Waikato, Whakatāne**

Nurses make a variety of diagnoses in their daily practice. Advanced nursing practice requires skilled health assessment, estimation of probabilities and evidence-based diagnostic reasoning. This complex cognitive process is developed in relation to skills and knowledge required for sound clinical reasoning.

Restriction: NURSING 770

Note: Child and Young Person Health stream is described on page 16

NURSING 775

30 points

Leadership and Management for Quality Health care**Semester One – Auckland, Northland**

Builds management and leadership knowledge, competence and business acumen through project-based learning. Focuses on critical thinking, quality service delivery and improvements and maximises organisational performance and change management.

NURSING 782

30 points

Research Methods in Nursing and Health**Semester One – Auckland, Semester Two – Auckland**

Explores the philosophical underpinnings of research methodologies and assists students to understand the major distinctions between quantitative and qualitative approaches. Students will critique research studies and apply research findings to practice. They will gain a practical appreciation of research ethics. By the end of the course, students will be able to apply their learning to the development of a basic research proposal.

Restriction: NURSING 768

NURSING 783

30 points

Special Topic: Pae Ora**Semester Two – Auckland**

Pae Ora encourages the wider health sector to work collaboratively, to provide high-quality and effective health and disability services at all levels. This course has been designed for those who wish to develop and consolidate a sophisticated understanding of the principles of Pae Ora (Mauri Ora – healthy individuals; Whānau Ora – healthy families; Wai Ora – healthy environments) in their practice area.

NURSING 784*

30 points

Advanced Emergency Nursing Practicum**Semester Two – Auckland**

Specialty Emergency nurses provide advanced nursing care and need expertise in assessment, diagnostic processes and therapeutic decision-making. Advanced assessment skills along with injury and condition-specific management models are taught with a focus on clinical decision-making for clients in emergency and accident and medical clinic settings. Designed to refine advanced emergency nursing skills for nurses working in specialty emergency nursing roles.

Pre-requisite: NURSING 773 or equivalent and practising in an advanced nursing role

NURSING 785*

30 points

Clinical Reasoning in Pharmacotherapeutics – Level 9**Semester One – Auckland, Semester Two – Auckland (Blended delivery Semester Two only)**

Builds on prior knowledge to establish an advanced understanding of pharmacotherapeutics and the application of the principles of pharmacokinetics, pharmaco-dynamics to prescribing practice in advanced practice roles; and develops nursing skills in clinical reasoning for safe and effective prescribing.

Prerequisite: NURSING 742, NURSING 773 (or NURSING 770/ NURSPRAC 720)

Restriction: NURSING 706, 722

NURSING 790 A/B

90 points

Research Portfolio – Level 9

Supervised research that represents the personal scholarly work of a student based on a coherent area of inquiry. Culminates in a conclusive piece of work related to a specific area of specialisation or scope of practice.

NURSING 795 A/B

60 points

Dissertation – Level 9**Semester One – (A) followed by Semester Two – (B)**

The 60-point dissertation (15,000 to 20,000 words) is part-time over two semesters and can take the form of a literature review, secondary data analysis or small project. Students work with a supervisor to complete the dissertation and attend three study days per semester. Goal: Successful submission of an externally assessed dissertation in partial fulfilment of a masters degree.

Restriction: NURSING 792

NURSING 796 A/B

120 points

Thesis – Level 9**NURSING 797 A/B**

120 points

Research Portfolio – Level 9

Supervised research that represents the personal scholarly work of a student based on a coherent area of inquiry. Culminates in a conclusive piece of work related to a specific area of specialisation or scope of practice.

Please note: all our courses are run subject to sufficient course enrolments. Before booking flights or accommodation, please contact the School to ensure the course is still running.

*Concession required

N.B.

1) A pre-requisite is a course or requirement that needs to be completed in order to be eligible for a course.

2) If a course is listed as a restriction, it means that the student has done the course in the past under a different course code and are not eligible to enrol in the course.

NURSPRAC 701* 30 points**Cardiac Specialty Nursing (next offered 2026)****Semester One – Auckland**

Draws on evidence from biomedical and social science research to equip nurses for the care and treatment of cardiac patients. Students will be expected to integrate evidence from a range of sources and apply this to the practice of cardiac nursing.

Restriction: NURSING 730

NURSPRAC 702* 30 points**Critical Care Specialty Nursing (next offered 2026)****Semester One – Auckland**

Draws on evidence from biomedical and social science research to equip nurses for the care and treatment of critical care patients. Students will be expected to integrate evidence from a range of sources and apply this to the practice of critical care nursing.

Restriction: NURSING 730

NURSPRAC 704* 30 points**Cancer Specialty Nursing (next offered 2026)****Semester One – Auckland**

Draws on evidence from biomedical and social science research to equip nurses for the care and treatment of patients with cancer. Students will be expected to integrate evidence from a range of sources and apply this to the practice of cancer nursing.

Restriction: NURSING 730

NURSPRAC 707* 30 points**Registered Nurse First Surgical Assist****Semester One – Auckland**

Draws on evidence from biomedical and social science research to equip nurses for the care and treatment of surgical patients. Students will be expected to integrate evidence from a range of sources and apply this to the practice of RNFA nursing.

Restriction: NURSING 730

NURSPRAC 708* 30 points**Emergency Specialty Nursing****Semester One – Auckland**

Draws on evidence from biomedical and social science research to equip nurses for the care and treatment of patients in the emergency setting. Students will be expected to integrate evidence from a range of sources and apply this to the practice of emergency nursing.

Restriction: NURSING 730

NURSPRAC 711* 30 points**Pain Nursing Specialty Nursing****Semester Two – Auckland**

Draws on evidence from biomedical and social science research to equip nurses for the care and treatment of patients experiencing pain. Students will be expected to integrate evidence from a range of sources and apply this to the practice of nursing patients with pain.

Restriction: NURSING 730

NURSPRAC 712* 30 points**Diabetes Specialty Nursing (next offered 2026)****Semester Two – Auckland**

Draws on evidence from biomedical and social science research to equip nurses for the care and treatment of diabetic patients. Students will be expected to integrate evidence from a range of sources and apply this to the practice of nursing patients with diabetes.

Restriction: NURSING 730

NURSPRAC 716* 30 points**Ophthalmology Specialty Nursing (next offered 2027)****Semester Two – Auckland**

Draws on evidence from biomedical and social science research to equip nurses for the care and treatment of ophthalmology patients. Students will be expected to integrate evidence from a range of sources and apply this to the practice of ophthalmology nursing.

Restriction: NURSING 719

NURSPRAC 717* 30 points**Practicum for RN Designated Prescribers****Semester One – Auckland, Semester Two – Auckland**

Prepares Registered Nurses to apply for prescribing rights as Designated Prescribers. Provides nurses with the opportunity to develop knowledge and skills in the application of pharmacotherapeutic concepts to prescribing as a Designated Prescriber. This includes direct supervision of prescribing activities in the clinical area and the ability to work closely and effectively in a multidisciplinary team environment.

Prerequisite: NURSING 742, 773 (or NURSING770/NURSPRAC 720), NURSING 785

NURSPRAC 727* 30 points**Perioperative Nursing Specialty (next offered 2026)****Semester One – Auckland**

Draws on evidence from biomedical and social science research to equip nurses for the care and treatment of patients across the perioperative continuum. Students will integrate evidence from a range of sources and apply this to the practice of caring for people requiring surgical intervention.

NURSPRAC 728* 30 points**Frailty in Aged Care Nursing (next offered 2026)****Semester Two – Auckland**

Frailty is an age-related, progressive geriatric syndrome related to pathological changes in underlying physiological and psycho-social function and the leading cause of mortality and morbidity in older people. Draws on evidence from biomedical and social science research to equip nurses for the care and treatment of older people affected by frailty.

HLTHSCI 700 30 points**Working with People with Long-term Conditions****Semester One – Auckland, Whakatāne (TBC)****Semester Two – Auckland, Northland**

Long-term conditions present one of the most challenging global epidemics of the twenty-first century. This course is designed to support the development of a responsive person-centred healthcare workforce to meet the needs of people living with long-term conditions and to work with them to improve their self-efficacy and health outcomes.

Restriction: NURSING 738

HLTHSCI 705* 30 points**Mental Health and Addiction for Health Professionals****Semester One – Auckland**

Uses a person-focused theoretical framework to explore mental health and addiction problems presenting in non-specialist mental health settings. Conceptualises mental health and addiction problems as frequently co-occurring. Engagement, assessment, collaborative solution focused interventions, referral and care coordination will be explored.

Restriction: NURSPRAC 718, 719

*Concession Required

HLTHSCI 710

30 points

Acute Stroke Care

Semester One – Online

Students will develop advanced interdisciplinary knowledge about pre-hospital care, diagnosis and hyperacute stroke care, secondary stroke prevention, stroke pathophysiology and management of risk factors. Students will evaluate and critique stroke epidemiology and equity of access to stroke services. Skills in assessment of neurological impairment, rehabilitation needs, and discharge planning will be developed with reference to clinical guidelines and local contexts.

HLTHSCI 715*

30 points

Special Topic: Research in Practice (next offered 2026)

Semester One – Auckland (BNurs(Hons) only)

Provides students with an in-depth understanding of undertaking research in the health sector. Building on learnings from prerequisite courses, students are supported to operationalise their research through completion of an ethics application as well as collecting and analysing data.

HLTHSCI 789*

30 points

Research Project – Level 9

Semester One and Semester Two

This aim of this course is to develop a coherent area of inquiry (10,000 words) that reflects the research purpose and process, and is applied to a specialty area of clinical practice. It consists of work involving the gaining of knowledge and understanding and typically involves enquiry of an experimental or critical nature driven by hypotheses, or intellectual enquiry. The student will work with designated academic staff who will act as supervisor for the project.

POPLPRAC 758

30 points

Biology of Ageing

Semester One – Online

The systematic analysis of the physiological changes in ageing and the relationship of these changes to current beliefs and theories around the ageing process. Current issues around biogerontology are discussed.

Restriction: POPLHLTH 749

POPLPRAC 761

30 points

Mental Health in Old Age (next offered 2026)

Semester Two – Auckland

Explores mental health in old age, including positive mental health and the range of mental health challenges facing older adults. There will be a focus on mental health issues and care across the health continuum, including primary care, specialist mental health services, and aged care services.

Restriction: NURSING 747, POPLPRAC 727

POPLPRAC 767

30 points

Dementia Care

Semester Two – Auckland

A clinically focused course that explores dementia within three specific areas; the brain, the diseases, and the person. It explores theoretical concepts and models of dementia care, and focuses on the partnership of individuals, carers and health professionals in the delivery of dementia care.

*Concession required

N.B.

1) A prerequisite is a course or requirement that needs to be completed in order to be eligible for a course.

2) If a course is listed as a restriction, it means that the student has done the course in the past under a different course code and are not eligible to enrol in the course.



Mental Health and Addiction

You may wish to specialise in your programme in Mental Health Nursing (i.e. PGCertHSc, specialisation Mental Health Nursing). If you don't currently work in Mental Health and Addiction, but would like to explore this pathway, you can consider HLTHSCI 705, Mental Health and Addiction for Health Professionals.

NURSING 774* 30 points

Nursing People in Acute Mental Health Crisis

Semester Two – Auckland (Blended)

The concept of recovery forms the basis of exploring nursing care of people in states of acute crisis. The course focuses on models of acute care, collaborative care, risk assessment and management, and maintaining a safe, non-coercive environment. Students will be expected to engage in critical reflection and analysis of practice issues and case studies.

NURSPRAC 718 30 points (NESP)

Contemporary Mental Health and Addictions Nursing Practice

Semester Two – Multiple streams: Auckland, Otago, Waikato

Explores contemporary mental health and addictions nursing practice from both socio-political and practice-skills perspectives. Focuses on developing awareness of the unique mental health and addictions context of Aotearoa/New Zealand and the cultural and values-based practices and policies which have emerged. Builds on foundational therapeutic and interpersonal skills and develops knowledge and skills in contemporary, evidence-based mental health and addictions nursing interventions.

Restriction: NURSING 786

NURSPRAC 719 30 points (NESP)

Clinical Practice in Mental Health and Addictions

Semester One – Multiple streams: Auckland, Otago, Waikato

A clinically based course focusing on history taking, assessment, formulation and nursing care planning. There is an emphasis on mental health, physical health and addictions assessment and the development of nursing formulation skills.

NURSPRAC 726* 30 points

Mental Health Nursing Practicum

Semester One – Online

Extends mental health nurses' knowledge and skills in clinical practice, scholarly activity, and leadership to improve health outcomes. Through guided learning experiences and support from clinical and academic mentors, students set and achieve individual learning goals. Focus is on the development of person-centred, reflective practice demonstrating understanding of the socio-political and cultural contexts of health and well-being.

Restriction: NURSING 744

HLTHSCI 703* 30 points

Psychological Interventions in Health Care

Semester Two – Auckland

Focuses on increasing health professionals' skills in the use of psychological interventions for people who have acute or long-term mental health or physical health problems. Explores evidence-based psychological models, such as Cognitive and Behaviour Therapy and Motivational Interviewing. Illness beliefs that impact on the person's ability to engage effectively with treatment plans, and self-management of their health problem/s, will also be critiqued.

Restriction: NURSING 760, 781

HLTHSCI 705* 30 points

Mental Health and Addiction for Health Professionals

Semester One – Auckland

Uses a person-focused theoretical framework to explore mental health and addiction problems presenting in non-specialist mental health settings. Conceptualises mental health and addiction problems as frequently co-occurring. Engagement, assessment, collaborative solution-focused interventions, referral and care coordination will be explored.

POPLPRAC 774 30 points

Psychosocial Issues in Palliative Care

Semester One – Auckland

An overview of the psychological and social study of patients with cancer or active, progressive disease, unresponsive to curative treatment. Covers existential philosophy and models of coping with suffering, spirituality, communication in palliative care, family systems, psychosocial assessments, psychiatric disorders in palliative care and bereavement.

Restriction: POPLPRAC 720

POPLPRAC 761 30 points

Mental Health in Old Age (next offered 2026)

Semester Two – Auckland

Explores mental health in old age, including positive mental health and the range of mental health challenges facing older adults. There will be a focus on mental health issues and care across the health continuum, including primary care, specialist mental health services, and aged care services.

Restriction: NURSING 747, POPLPRAC 727

Contact

postgradnursing@auckland.ac.nz

Ask to connect with the Mental Health and Addiction, Academic Advisor.

**Concession required*

N.B.

1) A prerequisite is a course or requirement that needs to be completed in order to be eligible for a course.

2) If a course is listed as a restriction, it means that the student has done the course in the past under a different course code and are not eligible to enrol in the course.



“I feel so proud to be a nurse, doing my part in challenging the stigma and misconceptions around people experiencing mental health issues – and helping people with their recovery.”

“I can attest to the difference nurses make when it comes to medical assessments and the experiences of people who use our services. Nurses possess a balance of competence in both medical knowledge and values that provide people with hope and comfort in times of vulnerability.”

“I decided to specialise in Adult Mental Health because I believe mental wellbeing is crucial if we want to live purposeful and meaningful lives.”

“The mental health sector has progressed in multiple ways in terms of safety, cultural competency, and holistic recovery for people. I feel privileged to do my part in maintaining this progression for the wellbeing of people in Aotearoa.”

Mikkol Gabriel Macabali

**Graduate: Bachelor of Nursing (BNurs),
Postgraduate Certificate in Health
Sciences – specialising in Mental
Health Nursing (PGCertHSc)**

 auckland.ac.nz/nursing-pg

Child and Youth Health

If you're interested in Child and Youth Health, further your knowledge in this specialist area by studying courses with a focus on Child and Youth Health.

NURSING 773 30 points **(Child and Young Person Health stream)**

Advanced Assessment and Clinical Reasoning

Semester One – Auckland

Nurses make a variety of diagnoses in their daily practice. Advanced nursing practice requires skilled health assessment, estimation of probabilities and evidence-based diagnostic reasoning. This complex cognitive process is developed in relation to skills and knowledge required for sound clinical reasoning.

Restriction: NURSING 770

NURSPRAC 703 A/B* 30 points

Paediatric Cardiac Specialty Nursing (next offered 2026)

Semester One (A) – Auckland, Semester Two (B) – Auckland

Draws on evidence from biomedical and social science research to equip nurses for the care and treatment of paediatric cardiac patients. Students will be expected to integrate evidence from a range of sources and apply this to the practice of paediatric cardiac nursing.

Restriction: NURSING 730

Note: NURSPRAC 703 A/B is intended for nurses working in the Paediatric Intensive Care environment while undertaking study.

NURSPRAC 713* 30 points

Paediatric Intensive Care Nursing

Semester One – Auckland

Draws on evidence from biomedical and social science research to equip nurses for the care and treatment of paediatric intensive care patients. Students will be expected to integrate evidence from a range of sources and apply this to the practice.

Restriction: NURSING 730

Note: NURSPRAC 713 is intended for nurses working in the Paediatric Intensive Care environment while undertaking study.

NURSPRAC 723* 30 points

Paediatric Cardiac Intensive Care

Semester Two – Auckland

Extends specialised nursing skills for the nurse in paediatric cardiac and intensive care settings. Through guided learning experiences and support from clinical and academic mentors, students set and achieve individual learning goals. Focus is on practice development and clinical leadership, demonstrating understanding of quality healthcare and the socio-political and cultural contexts of health and well-being.

Prerequisite: NURSPRAC 713

Restriction: NURSING 730, 744

Note: NURSPRAC 723 is intended for nurses working in the Paediatric Intensive Care environment while undertaking study.

Contact

postgradnursing@auckland.ac.nz

Ask to connect with an Academic Advisor.

**Concession required*

N.B.

1) A prerequisite is a course or requirement that needs to be completed in order to be eligible for a course.

2) If a course is listed as a restriction, it means that the student has done the course in the past under a different course code and are not eligible to enrol in the course.

Youth Health courses

The following Youth Health courses are available within the wider Faculty of Medical and Health Sciences. Please note to incorporate any of the following Youth Health courses, in your Nursing programme (up to 30 points); **you must seek preapproval from the School of Nursing.**

For preapproval you must contact both the Department of Paediatrics, Child and Youth Health and the School of Nursing using both email addresses below.

The Youth Health courses are all 15 points. PAEDS 712 is the foundation course for clinicians working with young people. This can be taken alone or together in the same semester as any other Youth Health course.

PAEDS 708 15 points

Population Youth Health

Semester One – Auckland (blended)

Youth injury prevention, resiliency factors and reproductive issues, and advocacy for young people. How do you make a difference in youth health? This course introduces key concepts in population youth health and utilises an evidence-based approach and New Zealand practice examples to consider how youth health can be improved in communities and populations.

Restriction: POPLHLTH 732

PAEDS 712 15 points

Youth Health Clinical Skills

Semester One – Auckland (blended)

Semester Two – Auckland (blended)

Develops and extends knowledge and skills in clinical interviewing, comprehensive assessments and effective interventions with young people.

PAEDS 719 15 points

Health, Education and Youth Development

Semester Two – Auckland (Blended)

Examines the overlap of health and education in the context of youth development by exploring the impact of past and current developments and strategies in both sectors on the well-being of young people. It reviews the 'business' of schools, the Health and Physical Education curriculum, school-based health and support services, whole school approaches to health, and the health and education needs of students not engaged with the school system.

PAEDS 721 15 points

Clinical Care of Adolescents and Young Adults with Cancer

Semester Two – Online

To develop and advance skills, knowledge and expertise in the clinical care of adolescents and young adults with cancer.

Prerequisite: PAEDS 712

Getting sound advice at the beginning and throughout your academic journey can be helpful when deciding what pathway to take. The Child and Youth Health network is a group of academics from throughout the University who can be contacted to support you in your academic progression, including mentorship and research supervision.

Contact

louise.albertella@auckland.ac.nz

For queries related to the Youth Health courses (PAEDS).



“I chose to study at Waipapa Taumata Rau | The University of Auckland because of the programme it offered, the support provided and the convenient location. The support and services were instrumental in helping me to complete my Postgraduate Diploma in Health Sciences, specialising in Advanced Nursing.”

“The teaching staff and tutors were exceptional – they provided me with the individual support I needed and supported my learning with relevant clinical cases, online resources and insights on their own experience in the field. My diploma also allowed me to be part of the wider community of nurses and experience their collegial support whilst undertaking the same study path.”

“I was fortunate enough to follow a study path that prepared me for my current role. I am working as a Mātanga Tapuhi, Nurse Practitioner in Child and Youth Health at the Starship Blood and Cancer Centre. The skills and knowledge that I covered as part of my studies is essential and invaluable to my current role, as was the support I received from my tutors and teachers. It enabled me to apply what I learned in the classroom into my nursing practice.”

“It’s an absolute privilege to provide nursing care for tamariki, young people and their whānau.”

Erin Kavanagh

Graduate: Postgraduate Diploma in Health Sciences, Specialisation in Advanced Nursing

auckland.ac.nz/nursing-pg

Palliative Care

Our courses in Palliative Care are designed for clinicians working within palliative care. Learn how to develop the attitudes and knowledge needed to care for patients and families living with a serious, life-changing or end-of-life illness. Palliative Care focuses on patient care for those facing life-challenging illness and embraces the essential elements and principles of patient-centred, holistic care.

NURSPRAC 710 30 points

Palliative Care Specialty Nursing (next offered 2026)

Semester One – Auckland

Draws on evidence from biomedical and social science research to equip nurses for the care and treatment of palliative care patients. Students will be expected to integrate evidence from a range of sources and apply this to the practice of palliative care nursing.

Restriction: NURSING 730

POPLPRAC 772 30 points

Symptom Management in Palliative Care

Semester One – Auckland

An overview of key symptoms commonly encountered in patients with progressive diseases in palliative care and end of life. Addresses assessment and management of these common symptoms using evidenced-based learning.

Restriction: POPLPRAC 722

POPLPRAC 773 30 points

Challenges in Symptom Management in Palliative Care

Semester Two – Auckland

An overview of key symptoms commonly encountered in malignant and non-malignant patients in palliative care and at end-of-life. Addresses assessment and management of these common symptoms using evidenced-based learning.

Prerequisite: POPLPRAC 772, 722

Restriction: POPLPRAC 723

POPLPRAC 774 30 points

Psychosocial Issues in Palliative Care

Semester One – Auckland

An overview of the psychological and social study of patients with cancer or active, progressive disease, unresponsive to curative treatment. Covers existential philosophy and models of coping with suffering, spirituality, communication in palliative care, family systems, psychosocial assessments, psychiatric disorders in palliative care and bereavement.

Restriction: POPLPRAC 720

POPLHLTH 777 30 points

Ethics and Societal Approaches to Death

Semester Two – Auckland

Covers the approaches to death of different cultures, exploring resource and legal issues. Addresses ethical issues: euthanasia versus palliative care, privacy, living wills and end-of-life medical decision-making, treatment abatement, duties after death, the nature of teamwork, the multidisciplinary nature of palliative care, the role of volunteers, self-care for palliative care providers and home versus residential care.

Restriction: POPLHLTH 746

Contact

postgradnursing@auckland.ac.nz

Ask to connect with an Academic Advisor.

**Concession required*

N.B.

1) A prerequisite is a course or requirement that needs to be completed in order to be eligible for a course.

2) If a course is listed as a restriction, it means that the student has done the course in the past under a different course code and are not eligible to enrol in the course.



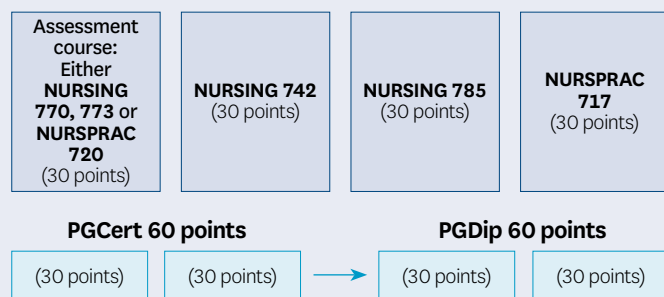
Educational pathway for Registered Nurse Designated Prescriber

A Registered Nurse (RN) Designated Prescriber is an RN who Te Kaunihera Tapuhi o Aotearoa | the Nursing Council of New Zealand has granted prescriptive authority (Medicines Regulation 2016). These nurses are authorised to prescribe treatment for a range of common and long-term conditions (e.g., diabetes, respiratory conditions or cardiovascular health concerns) within a structured multidisciplinary team (MDT). These four courses can be completed within a PGDipHSc or other qualification.

Academic preparation for RN Designated Prescribing

Required courses

The nurse will need to complete the following four courses to complete the educational requirements for registration with Te Kaunihera Tapuhi o Aotearoa | the Nursing Council of New Zealand:



Note:

- Both an assessment course and NURSING 742 are prerequisites for NURSING 785.
- NURSING 785 is a prerequisite for NURSPRAC 717.
- Students wishing to undertake NURSPRAC 717 must approach the School of Nursing before enrolment to discuss the nurse's and employer's readiness for the practicum.
- NURSING 770 Clinical Practice Development is an eligible course if completed after 2018.

These courses provide educational support for experienced nurses to further develop advanced clinical skills in patient assessment and diagnostic reasoning in relation to the clinical management and prescribing for patients with common acute and long-term conditions. Advanced knowledge in pathophysiology and pharmacotherapeutics supports the nurse's clinical decision-making skills.

The prescribing practicum includes a minimum of 150 hours of mentored clinical practice under the supervision of a prescribing mentor (senior Medical Practitioner or senior Nurse Practitioner). The practicum will be conducted in the area of practice and within the workplace and team, that the nurse will be working in as an RN Designated Prescriber. The practicum will include opportunities to consolidate the nurse's patient consultation and assessment, diagnostic reasoning, clinical decision-making and treatment planning skills.

Entry requirements for the prescribing practicum

The Registered Nurse must:

- Hold a current practising certificate with Te Kaunihera Tapuhi o Aotearoa | the Nursing Council of New Zealand, and have three years of fulltime practice in the area they intend to prescribe on completion of the programme (with at least one year of the total practice in Aotearoa – New Zealand).
- Have identified and have access to an area of clinical practice in which to develop their prescribing skills and have up-to-date clinical knowledge relevant to their intended area of prescribing practice.
- Have the support of their employer and work with a multidisciplinary team prepared to support the nurse's development as an RN Designated Prescriber through policy, audit, peer review and accessibility of continuing education.
- Have identified an authorised prescribing mentor (a senior Medical Practitioner or senior Nurse Practitioner) who will supervise the practicum hours (minimum 150 hours) and support the nurse's development in clinical practice.
- Have completed and successfully passed one of the required assessment courses, along with NURSING 742 and NURSING 785.

Contact

postgradnursing@auckland.ac.nz

Ask to connect with the RN Designated Prescribing Pathway Academic Advisor.

Educational pathway for Nurse Practitioner

Nurse Practitioners are highly skilled autonomous health practitioners with masters-level educational preparation and advanced clinical skills. Nurse Practitioners are registered as such with Te Kaunihera Tapuhi o Aotearoa | the Nursing Council of New Zealand and have the legal authority to practice in the Nurse Practitioner Scope of Practice.

Preparation for Nurse Practitioner

- Successfully completed prerequisite courses.
- Masters level qualification.
- Nurses must be practising clinically at an advanced level as they complete the Nurse Practitioner pathway.
- It is important to have the support of your employer to develop towards the Nurse Practitioner role as you complete your postgraduate studies.
- Completed the one-year Nurse Practitioner Training Programme.

Building your postgraduate pathway towards becoming a Nurse Practitioner

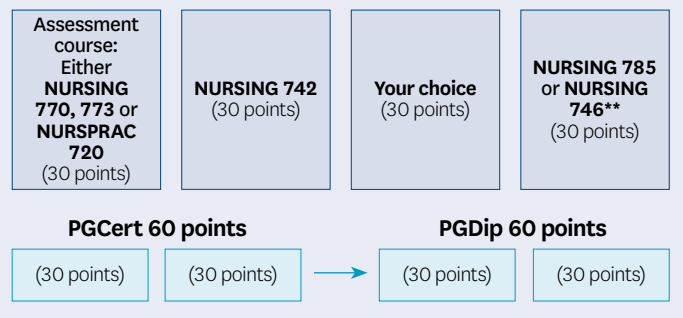
The following outlines the courses and potential pathway options for those aspiring to become a Nurse Practitioner.

Early postgraduate study

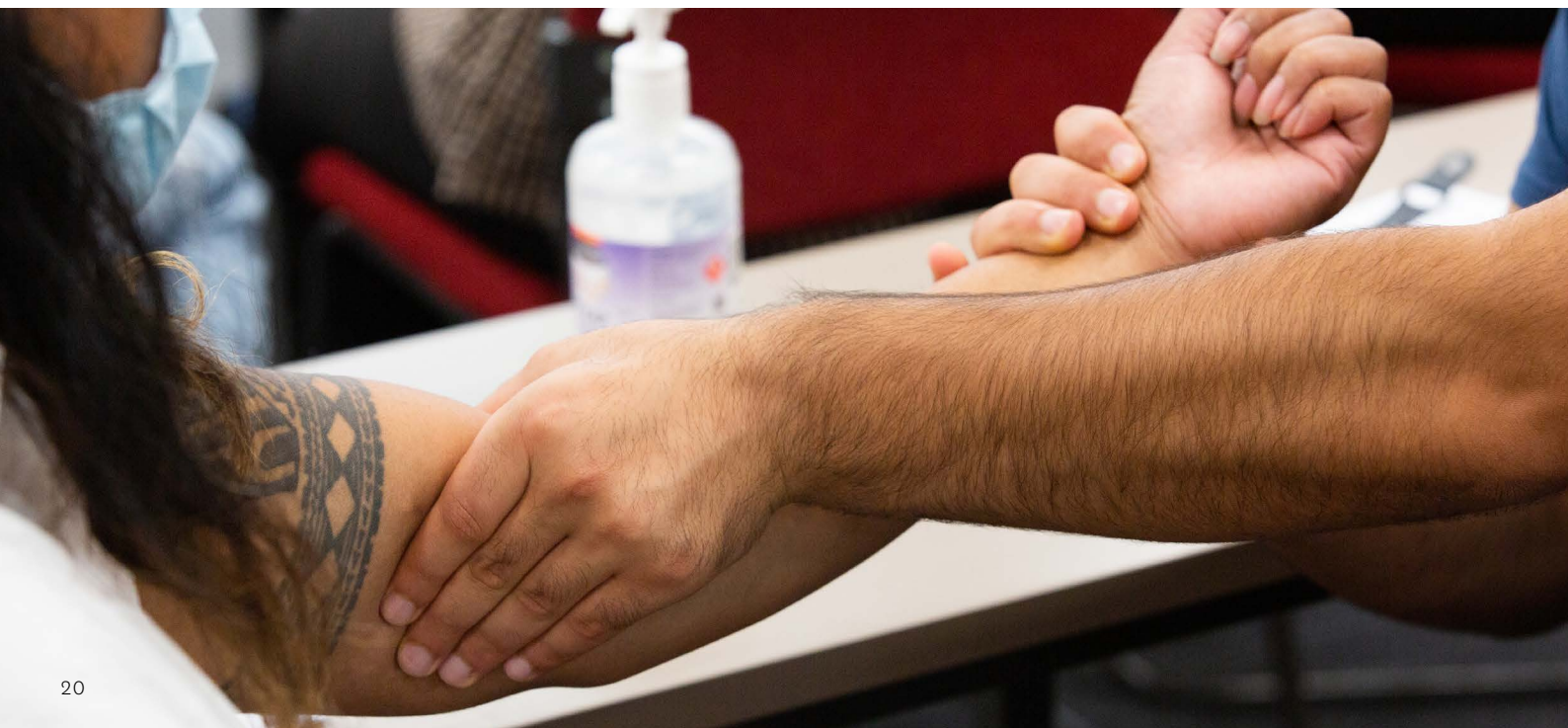
Strong clinical expertise is necessary for Nurse Practitioner practice. Nurses must be able to demonstrate advanced health assessment and clinical exam skills with clinical reasoning and knowledge of pathophysiology and pharmacology before proceeding to the final masters stage of the pathway. Students must successfully complete the PG CertHSc and PG DipHSc, meeting the GPA criteria to proceed to MNurs. If a student has completed previous postgraduate study or completed a programme such as the MNSc prior to their nursing registration, they should connect with the School of Nursing to discuss their options.

Required courses

The following courses are prerequisites for the Nurse Practitioner Training Programme and should be included in the PG CertHSc and PG DipHSc.



- NURSING 770 – is an eligible course if completed after 2018.
- Both an assessment course and NURSING 742 are prerequisites for NURSING 785.
- If you are not undertaking the NURSING 795 A/B dissertation course in your Masters (many aspiring Nurse Practitioners do not) then you must leave one of NURSING 746, 785 until you are in the Masters programme.
- NURSING 746 is highly recommended for aspiring Nurse Practitioners**.



Masters level study

The Master of Nursing (MNurs) is a 120-point programme (see page 8, MNurs (taught)); courses that can be included in your 120-point master's are listed below. These courses do need to be completed, however the

order that you complete them in will depend on your overall readiness, how much time you have left to complete your masters and whether you have been accepted onto the Nurse Practitioner Training Programme.

**NURSING 746
or 785 – Level
9**
(30 points)

**NURSING 701
Level 9**
(30 points)

NURSING 743
(30 points)

**NURSING 740
Level 9**
(30 points)

Note:

- NURSING 785 and NURSING 746 are both level 9 courses.
- 60 points of the Master of NURSING must be of level 9 courses.
- Unless you take the NURSING 795 A/B 60 point dissertation course, you must take NURSING 701 plus one more level 9 course in your masters to meet the masters degree regulatory requirements.
- NURSING 701 must be the final course of the MNurs, unless the student is undertaking option 2.

Option 1

If you are not yet ready to enter the NPTP, you could complete your MNurs like this:

Masters 120 points

(30 points)

(30 points)

(30 points)
Level 9

**NURSING 701
Level 9**
(30 points)

Accepted
onto the NPTP

Further postgraduate qualification

NURSING 743
(30 points)

**NURSING 740
Level 9**
(30 points)

or

Option 2

If you have been accepted onto the NPTP the MNurs could look like this:

Masters 120 points

**NURSING 746 or
NURSING 785 –
Level 9**
(30 points)

**NURSING 701
Level 9**
(30 points)

NURSING 743
(30 points)

**NURSING 740
Level 9**
(30 points)

All students are required to contact the Nurse Practitioner Pathway Coordinator prior to enrolment into the MNurs for course advice.

Nurse Practitioner Training Programme – Nurse Practitioner Practicum Year

The final practicum year is part of the Nurse Practitioner Training Programme. This is an application-based programme, and details are available at: nurseworkforce.blogs.auckland.ac.nz/nptp/

Academically, the practicum year consists of two courses, NURSING 743 and NURSING 740.

Nurse Practitioner Training Programme Practicum Year

NURSING 743
(30 points)

**NURSING 740
Level 9**
(30 points)

NURSING 743 and NURSING 740 are designed to refine advanced clinical decision-making skills for nurses preparing for the Nurse Practitioner scope of practice. Nurse Practitioners provide primary and specialty care and need expertise in clinical decision-making. Nurse Practitioners utilise advanced assessment skills along with disease management models to develop evidence-based clinical decisions needed for prescribing pharmacologic and non-pharmacologic treatment plans.

It may be possible to include one or both courses within your taught master's. However, if you complete your master's programme before you are admitted to the Nurse Practitioner Training Programme, it is possible to complete these final courses as part of another qualification, such as a second PGCert (criteria applies), for example. If this situation is relevant to you, please contact the School of Nursing.

Eligibility for the Nurse Practitioner Practicum Year

- Have completed a minimum of three years of full-time practice within the last five years, with at least one of the three years in full-time practice (0.8 FTE or higher) in Aotearoa-New Zealand. This experience should be in the area of practice that the Nurse Practitioner will be practising once registered.
- A solid foundation of clinical skills and knowledge is required to be able to practice at an advanced level.
- Have identified a clinical supervisor (senior Nurse Practitioner or senior doctor) who is willing to mentor the attainment of the advanced skills and competencies required for Nurse Practitioner practice.
- Written agreement from your employer must be provided with the application to confirm a minimum of 500 hours of supernumerary clinical release time, clinical supervisor availability, and release to attend university study days.

Contact

postgradnursing@auckland.ac.nz

Ask to connect with the Nurse Practitioner Pathway Academic Advisor.

How to apply

This guide will help you to complete the online Application for Admission to Waipapa Taumata Rau | The University of Auckland. To begin your application, please visit: applytostudy.auckland.ac.nz

Note: You MUST provide your official academic transcripts for all prior study to complete your application. You will also need to know your nursing registration number for the application.

If you have not studied with us before, click 'Register for a new account'. Once you enter the required information and click on 'Register', the system will send you an email which will show as onelogon@auckland.ac.nz. Please check your inbox (or junk mail) and validate your email address by selecting the 'Complete your Registration' button.

If you have registered with the University of Auckland before, please use your Student ID or email address and password to log in. If you do not remember your login details please phone **0800 61 62 63** for help to reset it or email onelogon@auckland.ac.nz

Once your registration is complete, please sign in and begin your new application. If you have any questions or issues when completing the online application please email postgradnursing@auckland.ac.nz

1

Apply (online)

2

Submit documentation
(some candidates may be required to submit further documentation)

3

Receive 'Offer of Place'

4

Accept your 'Offer of Place' in programme

5

Enrol in your course

Step 1 Apply online

- To begin your application, please go to: applytostudy.auckland.ac.nz
When you open your Application for Admission for the first time we will ask you to provide your personal information and details of your academic history and qualifications.
- Complete **Programme** section. Select from the drop down boxes below:

Programme

Which programme are you applying for? [Help](#)

Postgrad Diploma/Certificate

Programme type:
e.g., Postgrad Diploma/Certificate

Programme [Help](#)

Postgraduate Certificate in Health Sciences

Note: The Postgraduate Certificate in Health Sciences is aimed at current health professionals and those with a relevant degree wishing to pursue postgraduate study in a health related field.

Click [here](#) for more information on this programme.

Programme name:
e.g., PG Cert in Health Sciences

Major/Specialisation: [Help](#)

Advanced Nursing

Note: Click [here](#) for additional information on the Advanced Nursing major/specialisation. The specialisation in Advanced Nursing is aimed at registered nurses seeking to advance their knowledge and skills. It is intended to give nurses the core generic skills and knowledge essential for advanced nursing practice in a specialist area, and preparation for research.

Major or specialisation: e.g., Advanced Nursing or Mental Health Nursing

! You have reached the maximum number of majors/specialisations you can apply for.

Done

- Choose the appropriate term. If you wish to study more than one course, please contact us.

When do you want to start your studies? [Help](#)

2020 Semester One

Select which semester you want to begin studying

Campus Location [Help](#)

Grafton (Default)

Answer No if your DHB is funding your course – this is not classed as a scholarship.

Scholarships

Have you been awarded a scholarship or other funding that will pay for your University of Auckland tuition fees? [Help](#)

Yes
 No

Next >

Save and exit

4. Complete Supplementary Programme Information section.

Upload academic transcript and evidence of completed study.

Supplementary Programme Information

Programme specific questions

What is your Nursing Council of New Zealand registration number?

15 characters remaining.

Specific questions:
Answer and complete both fields

Please give a brief work history covering the last five years.

Course coordinator for various courses in the Bachelor of Nursing programme.
Development of online virtual client teaching and learning module for older person component

Minimum 100 characters. 831 characters remaining.

If you are a new student to the University of Auckland, you will not be able to proceed with your application without uploading this document. If you have not yet received your official transcript, please upload a screenshot of your latest transcript from your University/TEC dashboard. You will still need to provide an official transcript as soon as possible.

[Next >](#)

[Save and exit](#)

Supporting Information

Please provide the following information to support your application:

Tertiary study [Help](#)

Advanced Diploma in Nursing
Auckland University of Technology, 2017-2018

Academic transcript
(Required for application submission)

[Replace](#)

[Next >](#)

[Save and exit](#)

5. The next fields is required for statistical use by the Ministry of Education and the University of Auckland.

Review & submit your Application

Additional Information

The information collected in this section is for statistical use by the Ministry of Education and the University of Auckland. It will not be possible to identify any individual whose information has been used to produce those statistics. Your answers will not affect your entry to the University or to a particular programme.

What is the highest qualification held by your parent or caregiver?

Additional information:
Please complete both fields for statistical records

What was your main activity or occupation in New Zealand as at 01 October in the year before your intended enrolment?

6. Please review your application and check that the information you have provided are correct.

Review your Application

[Help](#)

Please review the information below and check that the details you have provided are correct.

You are applying for:

Postgraduate Certificate in Health Sciences

First Major/Specialisation: Advanced Nursing

Intended start date: 2020 Semester One

Location: Grafton

Application details:
You can go back and update any sections if required

7. Tick 'I agree' box. Click 'Submit' to complete your application. You will receive an acknowledgement email from us within two working days.

Declaration

Important: Completing and submitting this application online constitutes signing and dating the declaration as defined under the Electronic Transactions Act 2002. **The information contained in this application must be true, correct and complete.**



What happens next?

Check your email

Once you have submitted your application, you will receive an email with your ID number. Please monitor your email address for information and further requirements.

The acknowledgement email will be sent to the email address you registered your application with. It will include a list of specific certified documents (and, in some cases, other requirements) necessary to complete your application.

You can use your Student ID and the password you set up while applying, to sign into your Application for Admission, check your application status and see the documentation you need to provide at:

applytostudy.auckland.ac.nz

Step 2 Submitting identification and residency documents

Once you have submitted your application, you must log back in to see if you also need to provide an ID/residency document. If it asks you to provide one, you must get this certified and then upload it to your application. Please do not send in a physical copy.

More information on this, including what documents we accept and how to get them correctly certified, can be found at:

auckland.ac.nz/supporting-documents

If, when logging in to your application, you do not see anything indicating that you need to provide an ID/residency document, it means that we have managed to verify your identity through other means (e.g. RealMe, NSI number etc.) and do not have to upload anything for this.

Note: A certified document is a copy of the original endorsed with the statement "Original sighted. Certified true copy" by either a Justice of the Peace (JP), Solicitor, Notary Public (full details of the certifier must be included), or an authorised staff member of Waipapa Taumata Rau | The University of Auckland Student Information Centre.

If you are unable to source and submit any of your academic transcripts that have been requested for assessment, it is important that you notify us as soon as possible, outlining what you are unable to submit and why, by emailing admission@auckland.ac.nz.

Step 3 Assessment of your application and offer of place

This may take three to four weeks during peak admission periods. You can check the status of your Application for Admission at any time by signing in using your Student ID and password at applytostudy.auckland.ac.nz

You will be notified of the outcome of your application by email and will be able to view this by signing into your Application for Admission.

Step 4 Accept your offer of place online

Sign back into your Application for Admission and select 'Accept'.

Congratulations! You are now a student at Waipapa Taumata Rau | The University of Auckland. All communication from now on will be sent to your university email.

Step 5 Enrol in your course

You can now apply to enrol in your chosen course/s using Waipapa Taumata Rau | The University of Auckland's Student Services Online' portal.

Contact

For admission and enrolment support, please email: admission@auckland.ac.nz

Helpful information

We want to do all we can to help you succeed as a postgraduate student in our School of Nursing. To help you achieve this success, a wide range of services are available to you throughout your study journey with us.

Awards, scholarships and grants

There are a wide range of awards, scholarships and research grants available to our postgraduate and doctoral students.

Victoria League Postgraduate Nursing Award

An award to support Nursing students with the costs to complete postgraduate study, up to completing a master's degree.

auckland.ac.nz/victoria-league-pg-nursing-award

Dr William Bruce Goodfellow Award for Primary Care Nursing

An Award to assist Aotearoa-New Zealand Citizens and Permanent Residents with the compulsory fees to undertake a PGDip in Health Sciences and/or a MNurs in the School of Nursing.

auckland.ac.nz/dr-william-goodfellow-award

Victoria League Nursing Doctoral Fees Award

An Award to cover the compulsory fees for up to 36 months FTE for domestic DHSc students and domestic and international PhD students in Nursing.

auckland.ac.nz/victoria-league-doctoral-nursing-award

Kilpatrick Research Excellence Prize

A \$2,000 Prize to recognise the masters level nursing student who achieved the highest marks for a thesis or research portfolio.

auckland.ac.nz/kilpatrick-research-excellence-prize

For information on scholarship opportunities visit

auckland.ac.nz/scholarships or

email: scholarships@auckland.ac.nz

For more information on research funding:

auckland.ac.nz/pg-research-scholarship

External funding opportunities

For information on external scholarships and funding opportunities visit :

- Te Whatu Ora Health New Zealand.
- Te Pou
- New Zealand Nurses Organisation

Resources for Postgraduate Nursing students

Postgraduate nursing orientations

auckland.ac.nz/fmhs/pg-nursing-orientation

Māori and Pacific Admission Scheme (MAPAS)

auckland.ac.nz/fmhs/mapas

To apply for MAPAS, go to: auckland.ac.nz/mapas-pg-support-form

Te Fale Pouāwhina

auckland.ac.nz/tfp

To connect with Te Fale Pouāwhina, email: tfp@auckland.ac.nz

English Language Enrichment (ELE)

library.auckland.ac.nz/ele

Ratonga Hauātanga Taura | Student Disability Services (SDS)

auckland.ac.nz/disability

Student Support Team

auckland.ac.nz/fmhs/student-support

Student Hubs

auckland.ac.nz/student-hubs

Te Tumu Herenga | Libraries and Learning Services

auckland.ac.nz/library

Te Tumu Herenga | Libraries and Learning Services Workshops

auckland.campuslabs.com/engage/organization/tetumuherenga

Learning Essentials

learningessentials.auckland.ac.nz/

Student Health and Counselling Service

auckland.ac.nz/studenthealth

To connect with a Student Support Advisor,

email: fmhssupport@auckland.ac.nz

International students

auckland.ac.nz/international

FMHS Rainbow Student Network

auckland.ac.nz/fmhs/rainbow-student-network

Student IT Hub

library.auckland.ac.nz/it-essentials

Nursing Hub

canvas.auckland.ac.nz/courses/70593



Schedules and prescriptions 2025

Course	Name	Points	Semester		Delivery	Location
NURSING 701	Research Project - Level 9	30	1	2	Face-to-face	Auckland
NURSING 732	Leading and Managing Changes in Healthcare	30		2	Face-to-face	Auckland, Northland
NURSING 735	Clinical Education Practicum	30		2	Online	Online
NURSING 740	Nurse Practitioner Prescribing Practicum – Level 9 (NPTP)	30		2	Face-to-face	Auckland
NURSING 741	Education for Clinical Practice	30	1		Blended	Auckland
NURSING 742	Biological Science for Practice	30	1	2	Online	Online
NURSING 743	Nurse Practitioner Advanced Practicum (NPTP)	30	1		Face-to-face	Auckland
NURSING 744	Specialty Nursing Practicum (Critical Care Specialty Nursing – next offered 2026)	30		2	Face-to-face	Auckland
NURSING 745	Principles of Medication Management	30	1	2	Dual delivery	Either online or Auckland
NURSING 746	Evidence-based Practice and Implementation - Level 9	30	1	2	Face-to-face	Auckland
NURSING 749	Special Topic: Whānau Ora Tahī	30	1		Face-to-face	Auckland
NURSING 773	Advanced Assessment and Clinical Reasoning (Adult Health stream)	30	1	2	Face-to-face	Semester 1: Auckland, BOP, Northland, Taranaki; Semester 2: Auckland, Northland, Waikato, Whakatāne
NURSING 773	Advanced Assessment and Clinical Reasoning (Child and Young Person Health stream)	30	1		Face-to-face	Auckland
NURSING 774	Nursing People in Acute Mental Health Crisis	30		2	Blended	Auckland
NURSING 775	Leadership and Management for Quality Health Care	30	1		Face-to-face	Auckland, Northland
NURSING 782	Research Methods in Nursing and Health	30	1	2	Face-to-face	Auckland
NURSING 783	Special Topic: Pae Ora	30		2	Face-to-face	Auckland
NURSING 784	Advanced Emergency Nursing Practicum	30		2	Face-to-face	Auckland
NURSING 785	Clinical Reasoning in Pharmacotherapeutics – Level 9	30	1	2	Semester 1 face-to-face, Semester 2 blended	Auckland
NURSING 790 A/B	Research Portfolio – Level 9	90	1(A)(B)	2(A)(B)		
NURSING 795 A/B	Dissertation – Level 9	60	1(A)	2 (B)	Face-to-face	Auckland
NURSING 796 A/B	Thesis – Level 9	120	1(A)(B)	2(A)(B)		
NURSING 797 A/B	Research Portfolio – Level 9	120	1(A)(B)	2(A)(B)		
NURSPRAC 701	Cardiac Specialty Nursing (next offered 2026)	30	1		Face-to-face	Auckland
NURSPRAC 702	Critical Care Specialty Nursing (next offered 2026)	30	1		Face-to-face	Auckland
NURSPRAC 703 A/B	Paediatric Cardiac Specialty Nursing (next offered 2026)	30	1(A)	2(B)	Face-to-face	Auckland
NURSPRAC 704	Cancer Specialty Nursing (next offered 2026)	30	1		Face-to-face	Auckland
NURSPRAC 707	Registered Nurse First Surgical Assist	30	1		Face-to-face	Auckland
NURSPRAC 708	Emergency Specialty Nursing	30	1		Face-to-face	Auckland
NURSPRAC 710	Palliative Care Specialty Nursing (next offered 2026)	30	1		Face-to-face	Auckland
NURSPRAC 711	Pain Nursing Specialty Nursing	30		2	Face-to-face	Auckland
NURSPRAC 712	Diabetes Specialty Nursing (next offered 2026)	30		2	Face-to-face	Auckland
NURSPRAC 713	Paediatric Intensive Care Nursing	30	1		Face-to-face	Auckland
NURSPRAC 716	Ophthalmology Specialty Nursing (next offered 2027)	30		2	Face-to-face	Auckland
NURSPRAC 717	Practicum for RN Designated Prescribers	30	1	2	Face-to-face	Auckland
NURSPRAC 718	Contemporary Mental Health and Addictions Nursing Practice (NESP)	30		2	Face-to-face	Multiple streams: Auckland, Otago, Waikato
NURSPRAC 719	Clinical Practice in Mental Health and Addictions (NESP)	30	1		Face-to-face	Multiple streams: Auckland, Otago, Waikato
NURSPRAC 723	Paediatric Cardiac Intensive Care	30		2	Face-to-face	Auckland
NURSPRAC 726	Mental Health Nursing Practicum	30	1		Online	Online
NURSPRAC 727	Perioperative Nursing Specialty (next offered 2026)	30	1		Face-to-face	Auckland
NURSPRAC 728	Frailty in Aged Care Nursing (next offered 2026)	30		2	Face-to-face	Auckland
HLTHSCI 700	Working with People with Long-term Conditions	30	1	2	Face-to-face	Semester 1: Auckland, Whakatāne (TBC); Semester 2: Auckland, Northland
HLTHSCI 703	Psychological Interventions in Health Care	30		2	Face-to-face	Auckland
HLTHSCI 705	Mental Health and Addiction for Health Professionals	30	1		Face-to-face	Auckland
HLTHSCI 710	Acute Stroke Care	30	1		Online	Online
HLTHSCI 715	Research in Practice (next offered 2026)	30	1		Face-to-face	Auckland
HLTHSCI 789	Research Project - Level 9	30	1	2	Face-to-face	N/A
POPLPRAC 772	Symptom Management in Palliative Care	30	1		Face-to-face	Auckland
POPLPRAC 773	Challenges in Symptom Management in Palliative Care	30		2	Face-to-face	Auckland
POPLPRAC 774	Psychosocial Issues in Palliative Care	30	1		Face-to-face	Auckland
POPLPRAC 758	Biology of Ageing	30	1		Online	Online
POPLPRAC 761	Mental Health in Old Age (next offered 2026)	30		2	Face-to-face	Auckland
POPLPRAC 767	Dementia Care	30		2	Face-to-face	Auckland
POPLHLTH 777	Ethics and Societal Approaches to Death	30		2	Face-to-face	Auckland

Face-to-face = Course delivered on-site; Online = Course delivered in an online capacity; Blended = Course delivered in a mix of face-to-face and online forums; Dual = Students' enter EITHER an online OR face-to-face stream of the course.



**UNIVERSITY OF
AUCKLAND**
Waipapa Taumata Rau
NEW ZEALAND

For personal assistance, please visit us at your local Student Hub, where students and whānau are welcome to talk with our expert advisers:

Grafton Campus:

Philson Library, Building 503
Level 1, 85 Park Rd, Grafton
(Entry via the Atrium)

City Campus:

General Library, Building 109,
5 Alfred Street, Auckland

South Auckland Campus

Te Papa Ako o Tai Tonga:
6 Osterley Way, Manukau

Whangārei Campus

Te Papa Ako o Tai Tokerau:
L Block, 13 Alexander Street, Whangārei

AskAuckland: auckland.ac.nz/askus

Phone us:

Auckland: (09) 923 5025

Outside Auckland: 0800 61 62 63

International: +64 9 373 7513

Web: auckland.ac.nz/fmhs

For all Postgraduate Nursing enquiries please
email: postgradnursing@auckland.ac.nz

auckland.ac.nz/fmhs/son