

The University of Auckland International Office



Preparing for life & study in Aotearoa New Zealand



Te Tari ki te Ao | International Office
Waipapa Taumata Rau | University of Auckland



UNIVERSITY OF
AUCKLAND
Waipapa Taumata Rau
NEW ZEALAND

Karakia whakatimatanga | Opening karakia

Kia hora te marino
Kia whakapapa pounamu te
moana
Hei huarahi mā tātou i te
rangi nei
Aroha atu, aroha mai
Tātou i a tātou katoa

May peace be widespread
May the sea be like greenstone
A pathway for all of us this day.
Let us show respect for each
other, for one another.
Bind us all together

Te reo Māori

- Kia ora - Hello/welcome
- Aotearoa - New Zealand
- Tāmaki Makaurau - Auckland
- Waipapa Taumata Rau - University of Auckland
- Kai - Food
- Whānau - Family
- Mahi - work

Housekeeping

- You can ask questions using the Q&A feature. We answer the question in the chat window or live during the webinar
- This webinar is **being recorded**, and you will be able to watch it again in the next few days on our website
- A downloadable version of this presentation will also be made available in the next few days
- We will email both links to you

Welcome – Haere Mai

Preparations for departure

Study environment at Waipapa Taumata Rau

Staying connected

Life in Auckland and New Zealand

Resources and contact details

Question time

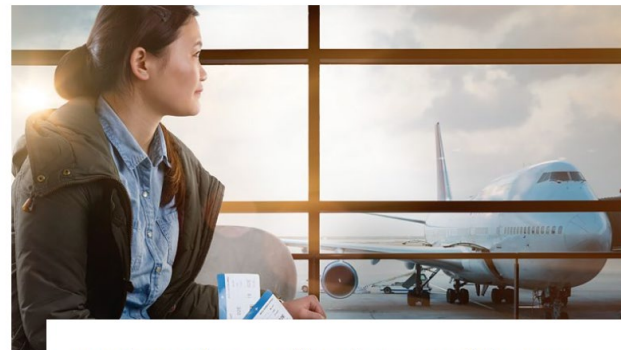
Preparations for departure

- Visas
- Insurance
- What to bring
- Accommodation
- Customs and biosecurity
- Airport transfer



Student visas

- You need an appropriate visa to enter and study in New Zealand
- Submit your visa application through the Immigration New Zealand Online portal
- Apply early to ensure processing is completed in time for you to be in New Zealand by start of semester, preferably orientation week
- Majority of students will apply as “fee paying” student visa category
- Use our step-by-step guides instructions and required paperwork



Student visa applications outside New Zealand

Find out how to submit your student visa application if you are outside New Zealand.

Discover more >

www.auckland.ac.nz/visa-information

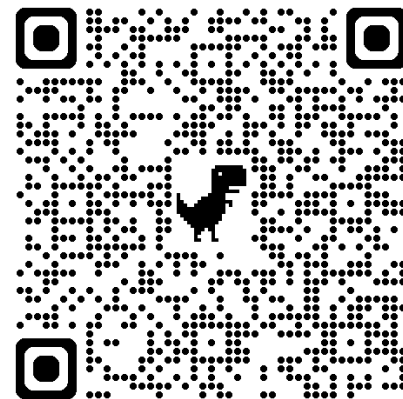
Webinar: How to apply for your University of Auckland visa



INTERNATIONAL
OFFICE

Gate	Departures	Time	Flight no.
A2	AUCKLAND	09:45	ANZ230
B2	DUBAI	10:15	UAE335
B1	GENEVA	10:50	DLH405
C2	NEW YORK	11:00	ATA780
A2	HONG KONG	11:20	AHK025
B2	SEOUL		
A1	KUALA LUMPUR		
B3	AUCKLAND		

For a comprehensive session about visa applications, join our webinar on Thursday 14 Nov!



Visitor and Working Holiday Visas

- If you study a programme that is longer than three or six months in total (this applies to most University programmes), you should wait to enter New Zealand on the appropriate student visa.
- If you travel to New Zealand visa-waiver or on a visitor visa with the intent of applying for a student visa onshore, you may not be considered a genuine visitor which may result in problems with future visa applications
- You will not be able to start your studies until you have a visa with the appropriate study conditions, which may mean a delay and issues with access to university services.



www.auckland.ac.nz/visa-information

Visa information

Find out how to apply for your student visa with step-by-step instructions, facts about Post-study work visa regulations and other useful information relating to your immigration status.



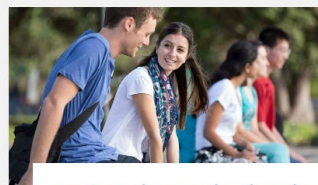
- [Apply for a student visa outside New Zealand](#) >
- [Apply for a student visa in New Zealand](#) >
- [Student visa applications for PhD and Doctoral candidates](#) >
- [Post-study work visa](#) >
- [Evidence of your visa](#) >
- [Frequently Asked Questions](#) >
- [Visa info sessions](#) >



Student visa applications outside New Zealand

Find out how to submit your student visa application if you are outside New Zealand.

[Discover more](#) >



Student visa applications in New Zealand

Guidelines for international students in New Zealand about submitting your student visa application.

[Get started](#) >



Student visa applications for international PhD students

Step-by-step information for international PhD candidates to submit your student visa application.

[Check it out](#) >



Work after study

If you want to stay in New Zealand to work after your studies, you need to fulfill all the requirements.

[Discover more](#) >



Visa evidence

You have to supply evidence of your visa to the University so we know you are eligible to study.

[Submit your visa](#) >



FAQ about visas

We collated a series of questions and answers to help you understand the visa process.

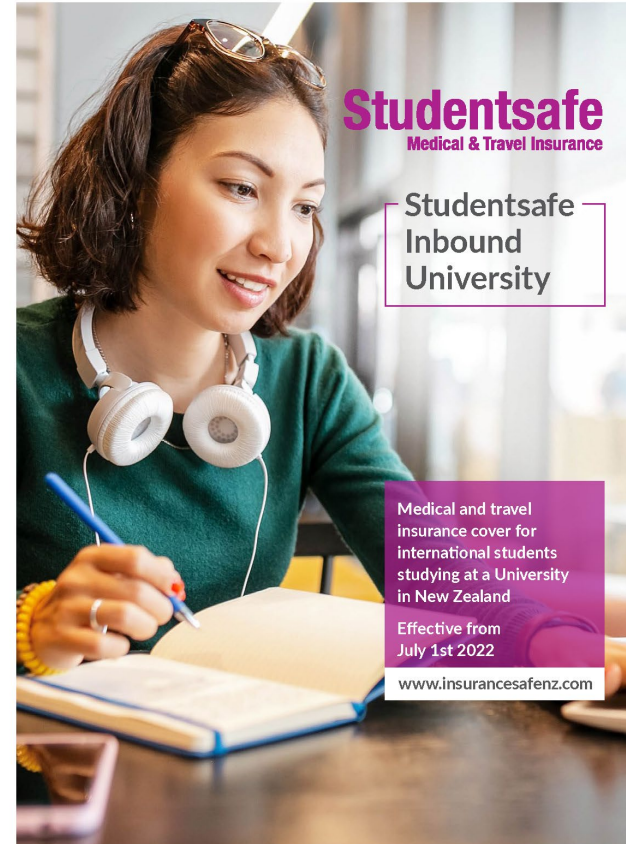
[Get the answers](#) >

www.auckland.ac.nz/visa-information

Health and travel insurance

- You will automatically be charged with insurance when you enrol in your courses
- You are required to pay the insurance fee together with your tuition fees by the start of the semester
- Your Student ID number is also your insurance number
- Your insurance cover usually starts 31 days prior to the start of term, including transit from your country of origin to New Zealand
- If you require cover for your pre-existing medical condition(s), you must complete a medical risk assessment form, and send it to the insurance provider, within 28 days of your arrival in New Zealand.

int-questions@auckland.ac.nz



Studentsafe
Medical & Travel Insurance

Studentsafe
Inbound
University

Medical and travel insurance cover for international students studying at a University in New Zealand

Effective from July 1st 2022

www.insurancesafenz.com

Health and travel insurance



[Insurance at the University of Auckland](#) >

[Studentsafe University policy](#) >

[Family insurance](#) >

[Insurance waivers](#) >

[Making an insurance claim](#) >

[Pre-existing medical conditions](#) >

[Change in circumstances](#) >

[Travelling overseas](#) >

[Offshore student insurance](#) >



Insurance at the University of Auckland

All International students must have health and travel insurance while studying in New Zealand. These guidelines apply to International students only.

[Discover more](#) >



Studentsafe University policy

Find out detailed information on the University's insurance policy for International students.

[Find out more](#) >



Insurance waivers

You may be eligible for an insurance waiver if you already have an alternative insurance policy.

[Check it out](#) >



Making an insurance claim

Follow these simple steps to lodge a Studentsafe Inbound insurance claim.

[See how](#) >



Family insurance

Learn more about adding your family to your Studentsafe Inbound University insurance policy.

[Learn more](#) >

www.auckland.ac.nz/is-insurance

Accommodation

University managed accommodation

- Catered halls for our first-year students to
- Self-catered residences which offer an independent lifestyle

Non-university accommodation

- Renting a studio or apartment
- Flat sharing or 'flatting'
- Hostel facilities
- Homestay and host families

Temporary accommodation

There may be a situation where you will need to book some temporary accommodation before moving into something long-term. You have different options to book in advance:

- Hotel or motel
- Hostel or backpackers
- Bed and breakfast

If you are choosing to stay in non-university managed accommodation, we strongly advise to view the property in person before signing a contract. In this case temporary accommodation at the beginning may be preferable.

Packing your luggage

Clothing

- **Warmer months** (Nov-April): lightweight clothing, beach clothing and swimwear, sunhat, sunglasses
- **Cooler months** (May-Oct): Warm clothing, hat, scarf, gloves
- University students in NZ have a casual standard of dress, but it is still a good idea to bring some smart clothing for formal events, presentations, or job interviews.

Medicine

- Ensure you have access to any prescription medication you need: **Bringing medicines into New Zealand**

When bringing prescription medication into NZ, follow these steps:

- Declare the medicine on your passenger arrival card
- Bring a copy of the prescription, or a letter from your doctor (in English)
- Keep the medicine in its original container
- Have no more than a 3 months supply

Appliances

- Electricity is supplied throughout New Zealand at 230/240 volts (50 hertz) and power outlets only accept flat two or three pin plugs.
- You will need an adaptor for any appliances you bring from home. You can buy this when you arrive or before you leave your home country.
- You may want to buy some small appliances (such as a hairdryer) when you get here rather than bringing them with you.



Customs and Biosecurity

Prohibited Items

New Zealand has strict laws on what you are permitted to bring into the country. Items that are prohibited include:

- Drugs (unless they have been prescribed to you)
- Firearms and weapons
- Flammable goods (such as gas cookers or lighters)
- More than NZ\$10,000 cash (or the equivalent in a foreign currency)
- Animals or insects (alive or dead)
- Feathers, shells, plants, or flowers
- Fresh foods, including meat
- Some packaged goods, such as certain cheeses

Biosecurity

To keep New Zealand free from pests and diseases, strict quarantine laws are in place at all New Zealand international airports. You must:

- Declare all food, plants, and animal goods upon arrival in New Zealand.
- Any camping equipment, hiking boots, or sports gear needs to be inspected.

Failing to declare biosecurity risk goods, even if by accident, can result in an instant NZ\$400 fine.

Visit the [Ministry for Primary Industries](#) for further information, available in several languages.

www.travellerdeclaration.govt.nz

The earliest you can submit your declaration is 24 hours before you start your trip to New Zealand. It needs to be submitted by the time you reach passport control in New Zealand.

New Zealand Traveller Declaration

Whakapuakanga Tangata
Haere ki Aotearoa

The New Zealand Traveller Declaration collects travel, customs, immigration and biosecurity information. It aims to improve the safety and security of New Zealand.

It is available for travellers arriving into New Zealand.

Start your declaration 

Get the NZTD app



Airport transfers

- Every **new** international student can book a free airport transfer to their accommodation in Auckland when they arrive for the first time
- The link to the booking form can be found in your admission email
- Once you have booked your flights and accommodation, book your transfer **at least 7 days** in advance of your departure from your home country
- You will receive a detailed information flyer once the transfer is confirmed



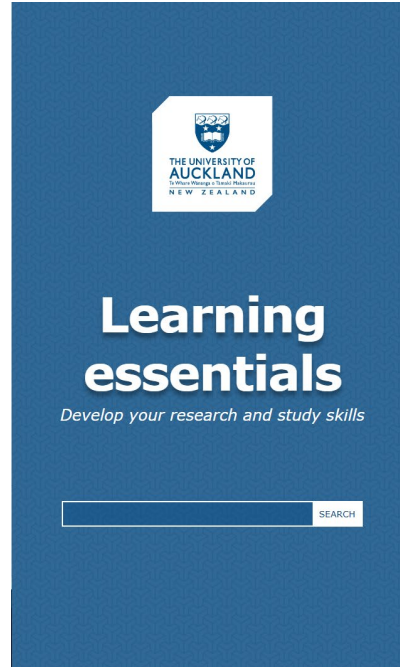
Studying at Waipapa Taumata Rau

- Learning at the University
- Orientation Week
- Enrolment
- Academic Integrity Course
- University platforms



Learning at the University

- Groups work on assessment tasks
- Lecturers provide some direction and will also expect independent work
- Think critically and creatively
- Class discussion you should try to add to
- Ask questions if you are unsure about something
- Referencing is very important
- Using good academic English

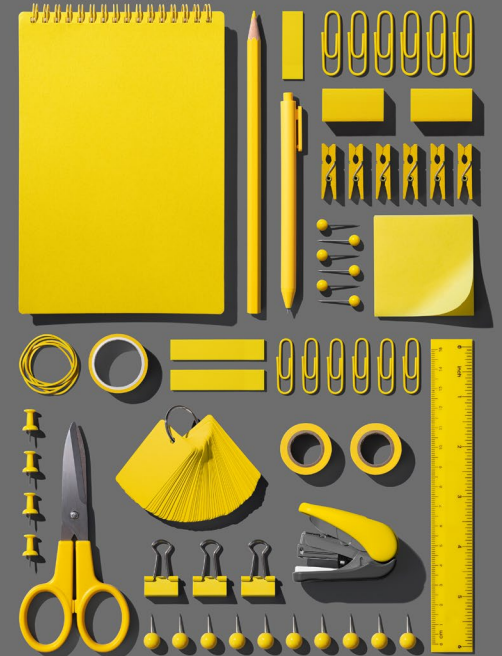




Enrolment – new international students

- New international students do not need to be enrolled when applying for their student visa, however you will need to enrol early so you don't miss out on your desired courses
- You must be enrolled in at least **three courses (or a minimum of 45 points) per semester**, to be eligible for a student visa.
- Enrol in the full academic year if possible or as soon as enrolments open

How to enrol: www.auckland.ac.nz/enrol



Academic Integrity

- Honesty that you have in your studies and assessments
- Key foundation to being a member of the University's academic community
- Having academic integrity shows that you respect the work of other people, such as their: Ideas, words, image, code

Academic Integrity Course

- You are automatically enrolled into the online Academic Integrity Course or ACADINT A01
- You need to complete it in your first semester – it is compulsory for all new students
- course is designed to increase your understanding of:
 - Academic integrity
 - University rules regarding academic conduct
 - How we manage academic misconduct



IT Essentials

Logging in

Username (UPI) and password

Username was sent to you after you completed your application for admission

Password you created when you applied for admission – always keep private

Student Services Online

Enrolment, finances, timetable, grades

Keep contact details up to date - ensure to add NZ address when you arrive

Also referred to as SSO

Student email

Check regularly

Activated 24 hours after you enrol in a course

Your email will be <username>@aucklanduni.ac.nz.

Canvas

University's web-based learning management system

Info about your courses, access reading materials, learning resources

Tests, participate in online discussions, and communicate with your lecturers, tutors, and classmates

MyAucklandUni

Access to your important information in one place

One-stop-shop to see SSO, timetables, email notifications

Course updates, library information, financial and personal details

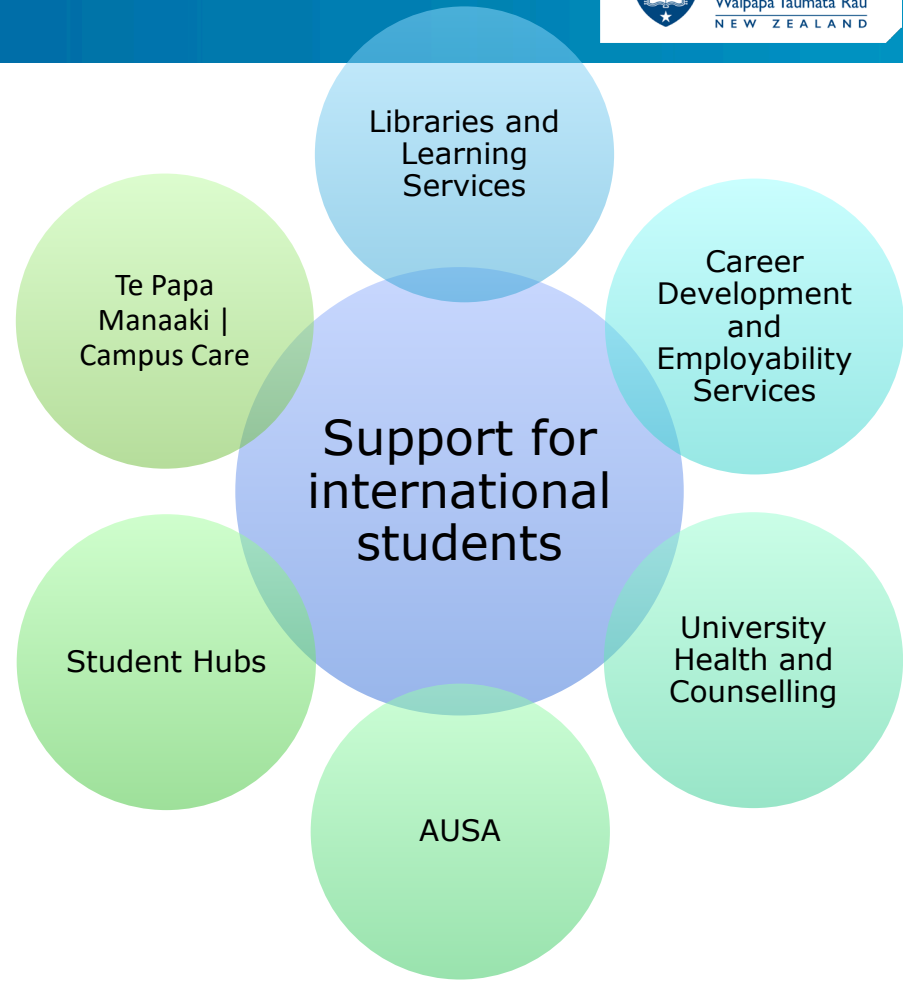
Staying connected

- Support Services
- Life on campus



Our support services

- Access a range of free support services on campus or online
- Academic, pastoral care, wellbeing and learning support services
- Award-winning career development services



Student Hubs

- Course selection, enrolment, degree planning and structuring your studies.
- Help and advice with fees, transcripts, and visa enquiries.
- University support options, including connection to wellbeing, disability, and engagement services.
- Library services and student IT support.
- Campus cards, AT Student Concessions
- www.auckland.ac.nz/student-hubs



International Student Support resources

Scan the QR code for all the
info!



Campus life

- Orientation week with dedicated sessions for international students
- More than 200 students run clubs, associations and societies on campus
- Study spaces around campus
- Gym, group exercise classes and inter-faculty sports events
- Social events
- Cafes and food court
- Childcare facilities



Life in Auckland and New Zealand

- Transport
- Bank, tax, employment
- Exploring your home away home



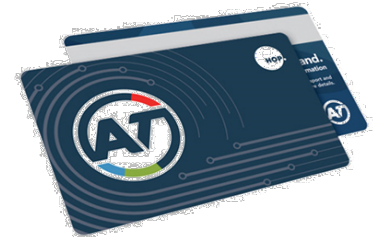
Transport options

- **Auckland Transport (AT) – public transport**

- Buses, trains, ferries
- Buy and set up AT HOP card with student concession
- Download AT Mobile App

- **Other modes of transport**

- Car – ensure you are holding a valid driver’s licence, certain conditions apply to drive on an overseas licence
- Bicycle – wearing a helmet is compulsory, Auckland is very hilly
- Walking - yay



Banking, tax and employment

Opening a bank account - what you need

- Passport details
- Proof that you are an enrolled student in New Zealand (e.g. Offer of Place or a student identity card)
- Proof of address (check with the bank directly what documents they accept)
- Your Tax Identification Number from your home country

Tax and employment

- Adhere to the work conditions in your work visa; minimum wage: NZD\$23.15 per hour before tax
- If you want to work, you'll require an IRD (Inland Revenue Department) number, this will be your NZ tax code
- You can apply for one once you have opened a bank account and you need: Passport details, most recent overseas tax number, your INZ Application Number (from your visa letter), your NZ bank account number and your name on the account

Auckland | Tāmaki Makaurau – your new home

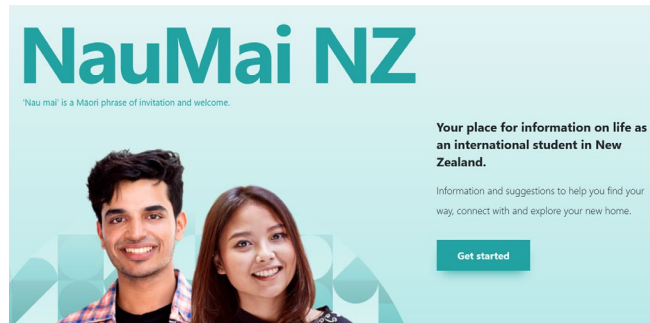
- [Visit Auckland](#)
- [Heart of the City](#)
- [Our Auckland](#)
- [Auckland Regional Parks](#)
- [NauMaiNZ](#)



[Watch on YouTube](#)

Aotearoa New Zealand

- [Tourism New Zealand](#)
- [Visitor Information Centres \(i-Site\)](#)
- [Department of Conservation](#)
- [DriveSafe](#)
- [NauMaiNZ](#)



NauMai NZ

'Nau mai' is a Maori phrase of invitation and welcome.

Your place for information on life as an international student in New Zealand.

Information and suggestions to help you find your way, connect with and explore your new home.

[Get started](#)



Resources & contact details

Online resources

- www.auckland.ac.nz/international-student-support
- www.auckland.ac.nz/visa-information
- www.auckland.ac.nz/is-insurance
- www.auckland.ac.nz/student-hubs

Contact us:

- int-questions@auckland.ac.nz
- Include your **Student ID** when you email us





UNIVERSITY OF
AUCKLAND
Waipapa Taumata Rau
NEW ZEALAND

Karakia Whakamutunga | Closing karakia

Kua tae te wā mō te whakairi te kete.
I te kete kōrero, i te kete whakaaro.
Hei tiki atu anō mā tātou.
Pou hihiri.
Pou rarama
Pou o te whakaaro
Pou o te tangata
Pou o te aroha
Te pou e here nei i a tātou
A haumi e
Hui e, Taiki e!.

The time has come to gather one's thoughts
The kit that contains discussion, and thought
of the day
So that we may use again as future
enlightenment
Ideology
Values enlightenment
Innovative thinking
Human support
Support affection charity
The values which bind us together
It is complete

Ngā mihi nui Thank you

Time for questions and answers...

