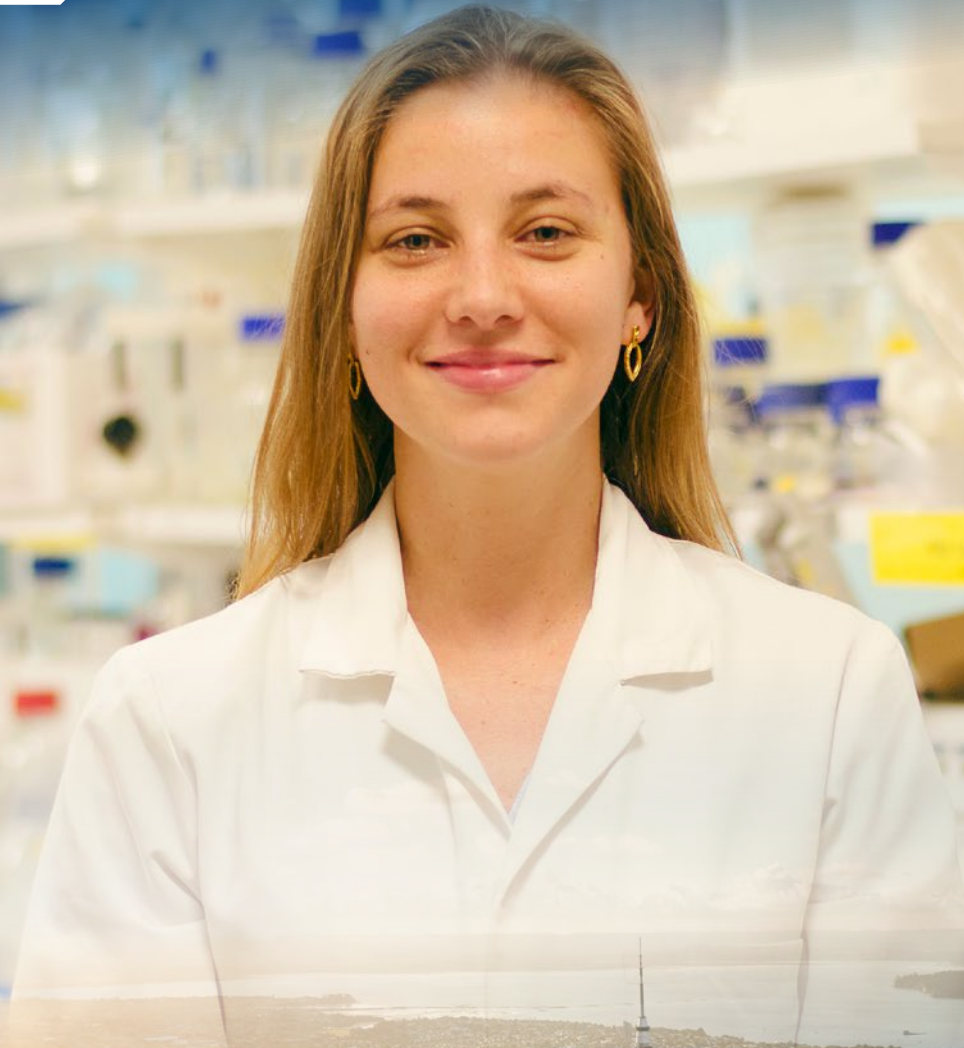




UNIVERSITY OF  
**AUCKLAND**  
Waipapa Taumata Rau  
NEW ZEALAND

# Doctor of Philosophy

PhD | 2025



**No.1**  
New Zealand  
University\*



**No.5**  
World University  
Sustainability  
Ranking\*\*



**Top 50**  
in the world for  
10 subjects\*\*



## About the PhD

A Doctor of Philosophy (PhD) is a globally recognised postgraduate research degree and the highest academic degree you can achieve.

As a doctoral candidate you will attend the leading conferences in your field and make significant contributions to global research, guided by your supervisors. You might also publish papers. After three to four years of research and writing, you will submit a thesis of original research which will be assessed by external examiners appointed by the University. You will also attend an oral examination.

## Why a PhD at the University of Auckland?

### World-class reputation

The University of Auckland is among the top 1% of universities globally. We are the only New Zealand institution in the QS top 100, and rank 13 in the world in the Times Higher Education Impact Rankings.<sup>1</sup>

### Leading research

We are New Zealand's largest research organisation, with the most comprehensive research offerings of any university in the country. Our critical mass of leading researchers, state-of-the-art research facilities and extensive library resources has resulted in the University's research making positive cultural, social, environmental and economic impact locally, nationally and globally.

[www.auckland.ac.nz/research](http://www.auckland.ac.nz/research)

## Extensive specialisations

We offer PhD studies in over 100 subjects, across all of our faculties, large scale research institutes, and University Research Centres:

### Arts

[www.arts.auckland.ac.nz](http://www.arts.auckland.ac.nz)

### Business

[www.business.auckland.ac.nz](http://www.business.auckland.ac.nz)

### Creative Arts and Industries

[www.creative.auckland.ac.nz](http://www.creative.auckland.ac.nz)

### Education and Social Work

[www.education.auckland.ac.nz](http://www.education.auckland.ac.nz)

### Engineering

[www.engineering.auckland.ac.nz](http://www.engineering.auckland.ac.nz)

### Law

[www.law.auckland.ac.nz](http://www.law.auckland.ac.nz)

### Medical and Health Sciences

[www.fmhs.auckland.ac.nz](http://www.fmhs.auckland.ac.nz)

### Science

[www.science.auckland.ac.nz](http://www.science.auckland.ac.nz)

### Liggins Institute (health research)

[www.liggins.auckland.ac.nz](http://www.liggins.auckland.ac.nz)

### Auckland Bioengineering Institute

[www.abi.auckland.ac.nz](http://www.abi.auckland.ac.nz)

### Te Huinga Hinengaro

Centre for Brain Research

### Te Aka Mātauranga Matepukupuku

Centre for Cancer Research

### Ngā Ara Whetū

Centre for Climate, Biodiversity & Society

### CCREATE-AGE

Centre for Co-Created Ageing Research

### Te Poutoko Ora a Kiwa

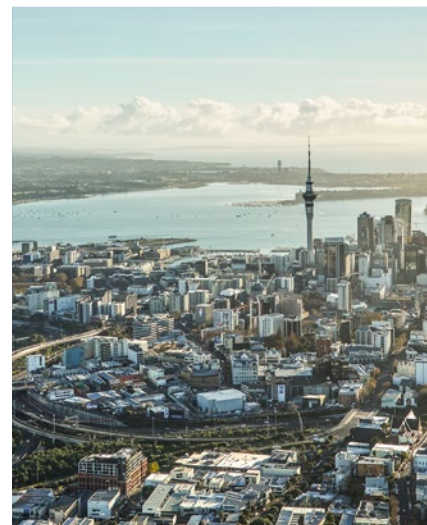
Centre for Pacific and Global Health

James Henare Māori Research Centre

MĀPIHI: Māori and Pacific Housing Research Centre

## Enriching environment

Discover our rich local culture, unique landscape and the reason our city's exceptional standard of living is among the best in the world.



## Auckland, New Zealand

- A safe, culturally diverse city in a beautiful and politically stable country.
- New Zealand's largest city at 1.6 million people, and the centre of retail and commercial activity.
- Set on a magnificent harbour and combining the best of vibrant city life with refreshing natural beauty.

<sup>1</sup> QS World University Rankings 2024; THE Impact Rankings 2024

# THE UNIVERSITY OF AUCKLAND KEY STATISTICS

# RANKED #1

The University of Auckland is the highest performing university in New Zealand, and ranks within the global Top 100 universities in the QS rankings for 2024

Each year the University awards

# 225

new University of Auckland Doctoral Scholarships

On average during their studies, doctoral candidates attend

# 3

conferences and author 3 publications

More than

# 3000

doctoral candidates; around

# 50%

international

We have the

# highest concentration of top-ranked researchers

in New Zealand



Cover attributions:

\*Times Higher Education 2022 and QS World Rankings 2023

\*\*Times Higher Education University Impact Rankings 2023

\*\*\* QS 2024 rankings by subject

Auckland is ranked

# 3<sup>rd</sup> in the world

for **quality of living** by the Mercer Quality of Living City Ranking 2023



## Work rights and family benefits

As a PhD candidate you have open work rights under the terms of your student visa.

On submission of your PhD, you can apply for a three-year Post-Study Work Visa (Open) which allows you to work for any employer in New Zealand.

Your spouse or partner is eligible for an open work permit valid for the duration of your PhD programme.

Your dependent children can attend New Zealand's primary and secondary schools at the same subsidised rate as New Zealand children.

[immigration.govt.nz](https://immigration.govt.nz)

## How we support you

### Domestic fee rates

New international PhD candidates who live in New Zealand during their doctoral study pay the same annual tuition fees as New Zealand students. In 2025. In 2025 that is expected to be about US\$5000 per annum (excluding compulsory fees).

### Generous scholarships

A range of scholarship options is available for international PhD candidates, including country-specific funding provided by your home government and local agencies. The University of Auckland Doctoral Scholarships (UoADS) are also an option for all applicants. These are highly competitive and only available as part of the admission process. The UoADS are offered in four rounds a year. The dates of these scholarship rounds may not be compatible with the timing of your government's funding. Note that you cannot hold a UoADS with a scholarship funded by a foreign government or agency.

[auckland.ac.nz/en/study/scholarships-and-awards/scholarship-types/postgraduate-scholarships/doctoral-scholarships.html](https://auckland.ac.nz/en/study/scholarships-and-awards/scholarship-types/postgraduate-scholarships/doctoral-scholarships.html)

### Automatic research funding

Research support funding is available automatically to all PhD candidates.

Postgraduate Research Student Support (PRESS) is a monthly payment for up to four years, intended to cover research costs and contribute to research-related travel, conference attendance and research consumables.

[auckland.ac.nz/en/students/academic-information/postgraduate-students/doctoral-doctoral-fees-and-money-matters/postgraduate-research-student-support-PRESS.html](https://auckland.ac.nz/en/students/academic-information/postgraduate-students/doctoral-doctoral-fees-and-money-matters/postgraduate-research-student-support-PRESS.html)

### Doctoral development

The University offers a comprehensive range of services to support doctoral candidate development. You could benefit from in-person workshops, online learning and a range of other resources and unique opportunities to help you refine your skills and employability.

[auckland.ac.nz/en/students/academic-information/postgraduate-students/doctoral-doctoral-opportunities.html](https://auckland.ac.nz/en/students/academic-information/postgraduate-students/doctoral-doctoral-opportunities.html)

## English language development

Our English language pathway helps anyone with a conditional offer to meet our language requirements. Once in the programme, you can explore our English language enrichment opportunities to support your studies.

[auckland.ac.nz/ele](https://auckland.ac.nz/ele)

### Dedicated advice

Teams of expert advisers provide support throughout your studies. The International Office provides student advice around visas, opening a bank account and living in a new country. Once enrolled, the School of Graduate Studies answers questions about your programme.

Before that, please contact us at [askauckland.ac.nz](mailto:askauckland.ac.nz) or [postgraduate@auckland.ac.nz](mailto:postgraduate@auckland.ac.nz)

### Accommodation

We can help you find quality accommodation in the heart of Auckland City, whether you are a single student, part of a couple or bringing your family. Choose from University residences or private accommodation.

[accommodation.ac.nz](https://accommodation.ac.nz)

## Preparing to apply

### Entry requirements

Acceptance on to the programme is subject to staff availability for supervision, and appropriate facilities. You must demonstrate an ability to research independently and possess a high level of theoretical understanding. You must also have completed a significant research project, dissertation or thesis during your qualifying degree. You can check your eligibility using our online calculator. All PhD candidates must have a GPE of 6.0 or above.

[gpecalculator.auckland.ac.nz](https://gpecalculator.auckland.ac.nz)

You will need an overall IELTS academic score equivalent.\*\*

[auckland.ac.nz/doctoralentry](https://auckland.ac.nz/doctoralentry)

### Find a supervisor

Before you complete your online application, please contact the academic who you would like to work with during your PhD. You can find information about all of our supervisors online.

The best websites to find profiles of our supervisors are:

[profiles.auckland.ac.nz](https://profiles.auckland.ac.nz)

[www.auckland.ac.nz/en/research/postgraduate-research-and-study/find-a-supervisor.html](https://www.auckland.ac.nz/en/research/postgraduate-research-and-study/find-a-supervisor.html)

You can also browse the research going on in our different faculties and schools and find a supervisor to match your research interests.

[auckland.ac.nz/research](https://auckland.ac.nz/research)

*\*You may apply for the PhD programme and receive a conditional offer if you have not yet met English proficiency requirements.*



*Carolina Peña, from Tunja, Colombia, is currently completing her PhD in the Faculty of Education and Social Work at the University of Auckland. Her thesis looks at walking as research and political practice, with a focus on the relationships between place and body from the perspectives of indigenous knowledge and Global South epistemologies.*

"I chose The University of Auckland because it is a prestigious university, internationally recognised for its high-quality research, highly qualified professors, and diverse international perspectives," she says.

Studying here has given Carolina the opportunity to be part of academic spaces she never thought she could be part of, including presenting at congresses in Norway and New Zealand.

"I am fortunate to have exceptional supervisors who have guided me through my PhD journey and encouraged me to develop my voice as an academic," she says.

She enjoys the University's welcoming, multi-cultural environment, as well as the strong sense of community and collaboration in her field. "There are multiple opportunities to connect with peers from my school and other disciplines," she says. "I have also enjoyed participating in various academic activities, such as reading and writing groups, writing retreats, seminars, lectures, and congresses."

After completing her degree, Carolina hopes to inspire young researchers and contribute to creating spaces in academia that value indigenous knowledge, decolonising methodologies, and the knowledge and the struggles of people who have been historically oppressed.

She says doing a PhD is incredibly rewarding: "At the University of Auckland, you will find all the resources and support needed to succeed."

# How to apply for a PhD at the University of Auckland

PhD applications may be submitted at any time and a PhD candidate can begin their studies on the first of any month of the year.

While there is no application closing date, please note that many scholarships have closing dates. If you wish to be considered for a University of Auckland Doctoral Scholarship (UoADS), there are four rounds a year. Your application needs to be complete in order to be considered for a UoADS: admission and UoADS decisions are made at the same time.

You need to allow at least three months between submitting a completed application and receiving an offer of a place in the programme. Often it takes longer than three months. You can speed things up by:

- Applying when you have completed your qualifying programme or are close to completion
- Submitting all of the required documents in a timely fashion
- Securing the support of a main supervisor before you begin your online application
- Making sure that your referees submit their references as soon as possible
- Responding promptly to any requests for additional information, including revisions to your statement of research intent.

Apply online at [auckland.ac.nz/doctoralapplications](http://auckland.ac.nz/doctoralapplications)

## Step 1. Check your eligibility

[www.auckland.ac.nz/doctoralentry](http://www.auckland.ac.nz/doctoralentry)



## Step 2. Choose your area of interest

Decide on your potential research topic, then check our active research in that area by exploring:

- Faculty and department websites
- Discovery Profiles

[profiles.auckland.ac.nz](http://profiles.auckland.ac.nz)

Note: in your online application you will be asked to nominate your proposed main supervisor. You should already have been in contact with this person and secured their agreement that you can name them in your application. If you do not name a proposed main supervisor your application process will take longer. Note: the support of a supervisor does not guarantee you a place in our programme. The University's Board of Graduate Studies makes the final decision regarding all PhD admissions.



## Step 3. Prepare your documentation

You will need electronic copies of:

- Undergraduate and Postgraduate academic transcripts
- Initial Statement of Research Intent
- Curriculum vitae (résumé)
- English language test results
- Evidence of your prior research experience: thesis/dissertation and/or publications



## Step 4. Apply online

[auckland.ac.nz/doctoralapplications](http://auckland.ac.nz/doctoralapplications)

You will receive an acknowledgement email with your Application for Admission login details. You can use these details to keep track of your application status.

## English language pathway

If you do not meet the English language requirements, we have two English language pathways that can help:

Foundation Certificate for Academic Purposes (FCertEAP)

[ela.auckland.ac.nz/fcerteap](http://ela.auckland.ac.nz/fcerteap)

Fast-track programme: English Pathway for Postgraduate Studies (EPPS)

[ela.auckland.ac.nz/epps](http://ela.auckland.ac.nz/epps)

## Application help

Follow our step-by-step guide for doctoral applications, admissions and enrolment.

[auckland.ac.nz/doctoralapplications](http://auckland.ac.nz/doctoralapplications)

Get answers to your questions using our online help tool. [askauckland.ac.nz](http://askauckland.ac.nz)

Email us at [postgraduate@auckland.ac.nz](mailto:postgraduate@auckland.ac.nz) for application help.



UNIVERSITY OF  
**AUCKLAND**  
Waipapa Taumata Rau  
NEW ZEALAND

## School of Graduate Studies

The University of Auckland, Private Bag 92019

Auckland, New Zealand

Phone: +64 9 923 1969

Email: [postgraduate@auckland.ac.nz](mailto:postgraduate@auckland.ac.nz)

[postgrad.auckland.ac.nz](http://postgrad.auckland.ac.nz)

FAQs: [AskAuckland.ac.nz](http://AskAuckland.ac.nz)