



UNIVERSITY OF
AUCKLAND
Waipapa Taumata Rau

PACIFIC PROSPECTUS 2026



#1
UNIVERSITY IN
NEW ZEALAND¹

#1
GRADUATE
EMPLOYABILITY²

TOP 50
IN THE WORLD
FOR 10 SUBJECTS³

Ko Waipapa Taumata
e karanga nei ki te mā
kai i te mātauranga

Nau mai, haere mai,
ki te whare whakairo

We are Waipapa Taumata Rau, we greet, we call to the many who desire the sustenance of knowledge.

Welcome, come forth and fasten to the carved meeting house, Tāne-nui-a-rangi.

Rau mātou, e mihi nei,
area e hiahia ana ki te

herea mai tōu waka
o Tāne-nui-a-rangi

Welcome to the University of Auckland



Kia ora, Talofa lava, Malo e lelei, Kia orana, Bula vinaka, Fakatalofa atu, Fakaalofa lahi atu, Halo Oloketa, la Orana, Mauri, Aloha, Malo ni, Hafa Adai and welcome to Aotearoa New Zealand's world-ranked University*.

Waipapa Taumata Rau, University of Auckland is one of the Pacific's leading research universities. Our University is a special place where we support you to grow and realise your full potential.

A qualification from the University of Auckland will help prepare you for a successful career in a vast range of fields and industries. Our Pacific graduates are leaders not only in their diverse Pacific communities but also in their respective fields and professions in New Zealand and internationally.

We have strong support networks to help you succeed, and there are many generous scholarships available. Please take the time to go through this Prospectus and don't hesitate to take advantage of the information, advice and assistance on offer.

This Prospectus provides an overview of the many people, networks and services you can turn to for academic advice, pastoral guidance and social activities. We look forward to meeting you and your families.

la manuia!

PROFESSOR JEMAIMA TIATIA-SIAU
Ihonuku (Te Moananui-a-Kiwa)
Pro Vice-Chancellor (Pacific)

For more information visit us online:
auckland.ac.nz/pacific

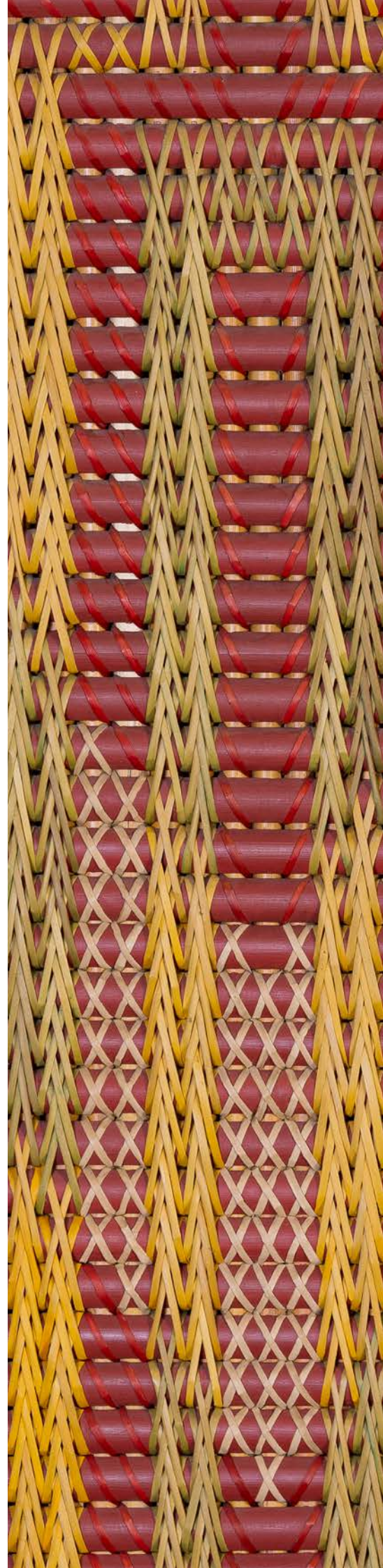
*auckland.ac.nz/worldranked

COVER ATTRIBUTIONS

¹ Times Higher Education and QS World Rankings 2025

² Number 1 in New Zealand and number 68 worldwide, QS Graduate Employability Rankings 2023

³ QS World University Rankings by Subject 2024





Contents

Welcome

We are here to help you	6
The Equity Office Te Ara Tautika	8
How do I get in?	9
What is a conjoint degree?	10
Academic English Language Requirement	10
Undergraduate Targeted Admission Schemes (UTAS)	11
Meet some of our Pacific students	12
Pacific student groups	15
Other pathways to study	16
UniBound – Academic Enrichment Programme	16
Foundation programmes	16
Options for South Auckland students	16
Scholarships and financial assistance	17
How will the University support me?	19
Celebrating Our Village, Our Kāinga	23
2025 Events for Pacific school students	24
It's time to apply	26
Closing dates for applications for admission in 2025	26

Cover photo

Lisi-Malia Pereira-Vaai, Colin Chan Chui, Alfram Head, Danise and Vensel Margraff (University of Auckland students)

We are here to help you

Kia ora, Talofa lava, Malo e lelei, Kia orana, Bula vinaka, Fakatalofa atu, Fakaalofa lahi atu, Halo Oloketa, la Orana, Mauri, Aloha, Malo ni, Hafa Adai and warm Pacific greetings. We value all our Pacific students and your families, and we will do everything we can to help you achieve.

We're the team at the Office of the Pro Vice-Chancellor Pacific. Our role is to walk alongside and support our Pacific students and their families throughout their journey here. We look forward to offering you academic and pastoral

guidance, and helping to ensure you have a great experience at the University.

In addition to our work on campus, we also run events during the year that support our Pacific communities throughout New Zealand.

Please feel free to contact us if you're considering the University of Auckland, are already enrolled here, or you just want to find out more about how we can help. Ngā mihi.



Pacific Portfolio Lead

Sili Mireta Ropati

Leauva'a, Lufilufi and Lalomanu (Samoa)

Qualifications held: BA, BA (Hons), MA (Hons)

Email: s.pita@auckland.ac.nz



Head of South Auckland Campus

Tangatakiikii Pauline Teura'atua-Rupeni

Rarotonga (Tupapa and Takuvaine) and Atiu (Mapumai) (Cook Islands)

Qualifications held: BA, BA (Hons), MA (Hons)

Email: p.rupeni@auckland.ac.nz

Phone: +64 9 923 9608

Mobile: 027 244 2367



Pacific Student Success Adviser

Sabrina Salome Wright-Fanua

Luatuanu'u, Salelologa, Gataivai and Tufutafoe (Samoa)

Qualifications held: BA/LLB, BA (Hons), MA

Email: sabrina.wright@auckland.ac.nz

Mobile: 021 208 4103



Unibound Manager

Junior Toailoa

Saleaula, Neiafu, Tafatafa and Luatuanu'u (Samoa)

Qualifications held: BSc

Email: j.isara@auckland.ac.nz



Professional Teaching Fellow (Faculty of Arts), Cultural Adviser

Lemoa Henry Fesulua'i

Vaimoso, Salelologa, Vailoa Palauli (Samoa)

Qualifications held: BA, GradDipTchng (Secondary), MEdLd, MA (Hons)

Email: h.fesuluai@auckland.ac.nz



Student Support Adviser

Sara Toleafoa

Alafua and Sinamoga (Samoa)

Qualifications held: BA, BA (Hons)

Email: sara.toleafoa@auckland.ac.nz

Moana Tupu

Schools and Community Adviser Pacific

Schools and Community Engagement Team

Email: scet@auckland.ac.nz

Phone: 0800 61 62 63

Pacific student life on campus

The Fale Pasifika is at the heart of student life on campus. It provides an important connection between the University and Pacific communities. Students at the University often say that the Fale provides them with a real sense of belonging and is their home away from home. auckland.ac.nz/falepasifika



The Equity Office Te Ara Tautika

“Equity” means fairness. Fairness benefits everyone. With our increasingly diverse student and staff community, the University of Auckland makes a difference to Aotearoa New Zealand, the Pacific and the world.

The Equity Office Te Ara Tautika works in partnership – especially with students and the Offices of the Pro Vice-Chancellor Māori and Pro Vice-Chancellor Pacific. We support the engagement, recruitment, retention and success of Māori and equity group students.

Equity group students include those who are Pacific; have disabilities; are lesbian, gay, bisexual, transgender, queer, intersex or Takatāpui+ (LGBTQITakatāpui+); are from constrained economic or refugee backgrounds; as well as women and men in areas where they are currently under-represented.

The University of Auckland is committed to being safe, inclusive and equitable.

What is a safe, inclusive and equitable University?

A place where:

- We value all our students and staff
- We respect difference
- We celebrate our diverse communities
- We take concerns about the study and work environment seriously
- It's OK to ask for help and support
- It's safe to disclose issues that may affect study or work

Check out the University's Student Charter. This document outlines the roles and responsibilities of staff and students.

auckland.ac.nz/studentcharter

There's no place for bullying, harassment or discrimination at the University. We do not tolerate racism, sexism, ableism, ageism, homophobia or transphobia.

auckland.ac.nz/equity-bhd

Family violence: It's not OK

The University affirms that family violence is unacceptable and that every person is entitled to respect, and to live free from fear and abuse. auckland.ac.nz/equity-itsnotok

LGBTQITakatāpui+ students

The University offers a range of initiatives to support LGBTQITakatāpui+ students. The Equity Office and Auckland University Students' Association (AUSA) jointly coordinate the Rainbow Student and Staff Network, and faculties also have their own rainbow groups. auckland.ac.nz/equity-rainbow

Students from constrained economic backgrounds

The University has a range of admission schemes to improve access to higher education for students from constrained economic backgrounds. The initiatives include scholarships; the Undergraduate Targeted Admission Schemes (UTAS); the UniBound programme and the University of Auckland Tertiary Foundation Certificate (TFC). auckland.ac.nz/equity-constrained

Find out more
auckland.ac.nz/equity



Student Disability Services

Student Disability Services, located in the Equity Office, provide a range of services. We aim to make studying at the University an accessible and positive experience. We tailor our support to suit each individual student because every disability affects people differently.

We provide ongoing support through our dedicated team of advisers, from general advice and mental health support through to scholarship and employment advice for students with disabilities.

If you live with a permanent or temporary impairment that impacts your studies, or if you had special conditions for exams at school, contact us for a confidential chat about the ways in which we may be able to help you succeed at our University.

auckland.ac.nz/disability
disability@auckland.ac.nz

How do I get in?

A university qualification can provide opportunities to give back to your family and wider community. Please get in touch with our team should you require more information or support.

We offer:

- More than 50 undergraduate programmes from certificate to bachelors level
- More than 200 subjects across Arts, Business and Economics, Creative Arts and Industries, Education, Social Justice, Engineering, Law, Medicine and Science
- Around 80 conjoint degree programmes
- Opportunities tailored for Pacific students

The basics

Why is it important to choose the right subjects in Year 11?

Some University of Auckland programmes require you to have taken specific subjects and gained minimum credits in certain subjects. Some programmes have other requirements such as a portfolio, audition and/or interview. For example:

- To gain entry into the Bachelor of Education (Teaching) programme, you will need an NCEA rank score of 150 and will be required to have an interview, provide referees' reports, and agree to a police and safety check.
- To gain entry into the Bachelor of Engineering (Honours) programme, you will need an NCEA rank score of 250, with 17 external Level 3 credits in Calculus and 16 external Level 3 credits in Physics

How do I get accepted to the University of Auckland?

To study at the University of Auckland, you must have a University Entrance qualification and be selected into a programme.

To increase your chances of being accepted, from Year 11 you should:

1. Take the right subjects. These subjects must be selected from the approved NZQA list. nzqa.govt.nz/ncea
2. Wherever possible, take Achievement Standards rather than Unit Standards. (The more Achievement Standards you have, the better.)
3. Aim for Excellence (4 points) and Merit (3 points) rather than Achieved (2 points).
4. Make sure you meet the University Entrance Standard. (See right.)

How your rank score is calculated

You will be allocated a rank score based on your best 80 credits at Level 3 or higher over a maximum of five approved subjects, weighted by the level of achievement attained in each set of credits.

If you achieve fewer than 80 credits, the rank score will be based on those credits you have gained at Level 3 over a maximum of five approved subjects and weighted by the level of achievement.

- The rank score will be calculated by awarding the following points for up to 24 credits in each approved subject taken at Level 3. The maximum rank score is 320.

Excellence	4 points
Merit	3 points
Achieved	2 points

- Credits obtained in any required subjects do not have to be among the best 80 credits used for ranking purposes.
- NCEA Level 3 credits achieved in previous years may be counted towards the 80 best credits used for ranking purposes.
- Level 3 subject requirements for a specific programme may be met in Year 12.
- You are strongly encouraged to take achievement standards as preparation for university study.



The University Entrance Standard

You will be qualified for entrance to New Zealand universities in 2026 if you have obtained:

- NCEA Level 3
- Approved subjects: 14 credits in each of three approved subjects at Level 3
- Literacy requirement: 10 credits at Level 2 or above, made up of 5 credits in reading and 5 credits in writing
- Numeracy requirement: 10 credits at level 1 or above, made up of co-requisite Level 1 numeracy standard (US32406) OR te pāngarau unit standard (US32412) or achievement standards from a limited list of numeracy rich standards.

For more information on University Entrance, please see NZQA's website.

nzqa.govt.nz/ncea

To be admitted to the University of Auckland you must gain the University Entrance Standard and be selected into a programme. If you have not met University Entrance, you can complete "Catch Up Credits" through your school or kura.

auckland.ac.nz/ncea-catch-up-credits

Example of how a rank score for NCEA Level 3 is calculated

Subject	Standard type	Results	Calculate	Rank Score
English	Achievement	6 Excellence 6 Merit 16* Achieved	6 x 4 points 6 x 3 points 12* x 2 points	66
History	Achievement	8 Excellence 10 Achieved	8 x 4 points 10 x 2 points	52
Physics	Achievement	24 Merit	24 x 3 points	72
Calculus	Achievement	4 Excellence 3 Merit 8** Achieved	4 x 4 points 3 x 3 points	25
Statistics	Achievement	7 Merit 10** Achieved	7 x 3 points	21
Economics	Achievement	6*** Achieved	Not counted***	Nil
Rank score				236

*Maximum 24 credits per subject. Any points above this limit are excluded.

**Not included as only best 80 credits are used in calculation of rank score.

***Only five subjects are included in the calculation.

Academic English Language Requirement (AELR)

You must meet the AELR if you're admitted to a University of Auckland bachelors degree programme and you are:

- A domestic student
- An international student applying on the basis of a New Zealand secondary school qualification
- An international student applying on the basis of results at another New Zealand tertiary institution

How do I meet the Academic English Language Requirement?

The AELR may be met through your entry qualification or through satisfactory completion of an approved course in your first 12 months of study.

Meeting the Requirement through your entrance qualification

School qualifications

For those applying on the basis of NCEA results:

You will meet the Requirement if you have gained the University Entrance Literacy Standard and a minimum of 17 credits in English at Level 2 and/or 3.* This does not apply to applicants who meet the University Entrance Literacy standard in Te Reo.

For those applying on the basis of Cambridge International results:

You will meet the Requirement if you have gained the University Entrance Literacy Standard and a minimum of a D grade in an English course at AS or A Level.

For those applying on the basis of International Baccalaureate (IB) results:

You will meet the Requirement if you have gained the University Entrance Literacy Standard and a minimum of 26 points.

Previous study completed elsewhere

For those applying on the basis of results at another tertiary institution, you will meet the Requirement if you have:

- Satisfied the AELR through NCEA, Cambridge International or IB qualifications as outlined above, or
- Passed 60 points or more of study at a tertiary institution and have achieved an acceptable result in DELNA** testing.

auckland.ac.nz/aelr

*English for Academic Purposes standards US 22750 and US 22751 will contribute to meeting the AELR.

**For information regarding DELNA, please see auckland.ac.nz/delna

What if I don't meet the entry requirements for the programme I applied for?

If you don't meet requirements, you can still apply for a place under the University's Undergraduate Targeted Admission Schemes (UTAS).

Find out more about UTAS opposite on page 11. To learn more about alternative pathways for domestic Pacific students see page 16.

Cambridge International Examinations and International Baccalaureate (IB)

If you have gained either of these qualifications, you will have different entry requirements and should visit our website.

auckland.ac.nz/entry-requirements

International students

If you are an international student, please visit our webpages.

auckland.ac.nz/international

What is a conjoint degree?

You can earn a conjoint degree by studying for two different degrees at the same time. In this way, you gain two qualifications faster than if you'd studied for them individually.

A conjoint degree can give you a distinct advantage in the job market. It's also the opportunity to mix two different areas of interest, so you don't have to give up one for the other.

For example:

- A Bachelor of Engineering with a Bachelor of Design
- A Bachelor of Commerce with a Bachelor of Science
- A Bachelor of Health Sciences with a Bachelor of Laws

If you're applying for a conjoint programme, you must meet the admission and selection requirement for both programmes of study. Higher rank scores will be required.

auckland.ac.nz/conjoints

Join our Pacific and Māori learning community

There is a University-wide community that is committed to the academic success of Māori and Pacific learners. The faculties have dedicated staff and meeting spaces to support Māori and Pacific students, and they develop their own programmes to complement the teaching and learning environment. Our programmes offer small-group learning, whakawhanaungatanga, wānanga, fono, face-to-face meetings and workshops. These help connect new Māori and Pacific students with senior Māori and Pacific students (tuākana/mentors), academic teaching staff, and key people across the University.

For more information and faculty contact details, visit auckland.ac.nz/tuakana

Undergraduate Targeted Admission Schemes (UTAS)

UTAS reserve a number of places in undergraduate programmes for applicants who have achieved the University Entrance (UE) standard but have not met the general entry requirements for the programme of their choice. UTAS applicants are required to meet specific eligibility criteria.

The UTAS Policy is designed to ensure that the University provides equal educational opportunities to eligible Māori and Pacific students, and students from other under-represented groups who have the potential to succeed at our world-ranked University.

UTAS students are expected to meet the same high academic standards as all other undergraduate students at the University.

UTAS places are available to eligible:

- Māori applicants
- Pacific applicants
- Applicants with disabilities
- Applicants from constrained economic backgrounds (For UTAS purposes, that means school leavers* from decile 1–3 schools.)
- Applicants who have themselves or whose parents/primary guardian(s) have been granted refuge in New Zealand

UTAS is not available to international students.

**UTAS applicants from constrained economic backgrounds must be school leavers.*

What support is available for UTAS students?

We provide a range of support for students who are admitted through UTAS, including:

- Orientation
- Help with course selection
- Pastoral support
- Academic tutorials
- Tuākana Learning Communities for Māori and Pacific students
- Student Disability Services

The University of Auckland has taken all steps to ensure that the information on these pages is correct, but changes may occur. For the most up-to-date information phone us or go online.

0800 61 62 63
auckland.ac.nz/utas

Contact us about UTAS

To find out if you are eligible for admission via UTAS, please visit the UTAS website **auckland.ac.nz/utas**

Or contact us directly

studentinfo@auckland.ac.nz
0800 61 62 63

Enquiries about students with disabilities

disability@auckland.ac.nz
or call +64 9 923 8808 ext 82936

Find out more
auckland.ac.nz/utas



“Looking ahead, this qualification is a platform to address real-world challenges through academic exploration and solution-oriented initiatives encompassing all forms of knowledge, including law, economics, and finance.”

“My decision to take this career path is deeply influenced by the values instilled in me by my great-grandmother, Lisi Vaai, and Auntie Ula (Alosamoa Erna Vaai-Aiono), as well as Auntie Lei, Uncle Kolone, and my parents, Benjamin Pereira and Audrey Brown-Pereira. Their teachings have shaped my character, emphasising a commitment to service and love for country and family, compassion for others, a profound appreciation for the arts and education, and a dedication to lifelong learning.”

“What I appreciate most about my programmes of study is the opportunity to interact with a diverse range of perspectives and cultures. As an introvert, I tend to observe and listen rather than share my own opinions. Through this approach, I gain valuable insights and learn from the experiences of others. Connecting with fellow students, especially those from different generations and backgrounds, allows me to see the world through their eyes and gain new perspectives. This aspect of my education not only broadens my understanding but also fuels my curiosity and passion for learning.

“My passion lies in serving the community and supporting others. I’m continually inspired by brilliant Pasefika minds who are dedicated to empowering and uplifting our communities.

“As Treasurer for AUCISA, the Cook Islands Students Association, I take joy in learning more about, exploring and celebrating my Cook Islands heritage (and Samoan too!) while contributing to our warm and inclusive campus community. Great knowledge and wisdom come from understanding the stories, the values, the languages, the meanings and the histories of our Moana.”

Lisi-Malia Pereira-Vaai

Samoan: Upolu (Taufusi, Vaivase-Tai, Alafua, Saleufi, Lalomanu, Laulii, Lepa, Aleipata, Solosolo) Savaii (Salelologa, Vaisala, Papa Sataua, Patamea, Satupaitea)

Cook Islander: Rarotonga (Tupapa, Arorangi, Ngatangiiia), Atiu (Areora), Aitutaki (Tautu, Amuri, Vaipae, Arutanga)

Student: Bachelor of Commerce/Bachelor of Laws (double majoring in Economics and Finance) (Year 4)





“I enjoy the people! The lecturers provide great insight and opinion on whatever I am learning about. The students come from a wide range of backgrounds and help me to enjoy my tertiary study. The student associations and clubs are also great.”

“I enjoy being able to study many different topics that wouldn’t be available to me if I studied towards one degree. My conjoint will also lead to a fruitful career that allows me to give back to the community.

“My degree choices are a result of my desire to provide to my community, pursuit of my passion and financial stability. Having an academic background in legal studies is immensely useful in life outside of university, and music has been something that is close to my heart from a young age. I hope that I am able to complete my degree and enter either the realm of copyright law or community law, assisting our Pacific peoples in navigating the legal world.

“Time management is essential. I’m still learning every day how I can properly manage my time. Goal setting for short, medium and long term is one way I’ve learnt to keep on top of everything. When I feel tired, I try to take breaks and rest properly. Winding down with my loved ones helps me to ground myself and reminds me of why I am studying. It gives me that extra drive and motivation to get up and keep persevering.”

Alfram Head

Niuean. Alofi, Lakepa, Tamakautoga.
Student: Bachelor of Music/Bachelor of Laws Conjoint
(Year 4)

“I have wanted to study psychology since about year 12 in high school. I had dreams of being a clinical psychologist or psychiatrist until I began my undergraduate studies and found my love for research and cognitive psychology.”

“Being a Pasifika student, my community was always going to be a part of my study and career path. So, I’ve sought out opportunities to further my knowledge in Pacific and Indigenous methodologies for a lens suited to my community, my magafaoa (family).

“I have enjoyed every aspect of my degree. I have been lucky to have such enthusiastic and passionate lecturers and tutors. The range of career and research paths has been a blessing also, especially with the help of Pasifika mentors I’ve been in touch with. There are no research interests too niche to pursue and I can combine my interest in cognitive psychology and service to the MPI (Māori Pacific Islands) community. I have learnt more than I can put into words and can’t wait to do more.

“I have gained knowledge and a deeper understanding of the world and communities around me. The things I now know about my major, about myself, my culture and the world do not make me feel as though I know it all now. I do not. However, I have been given the tools to navigate all these aspects and am so excited to know more.”

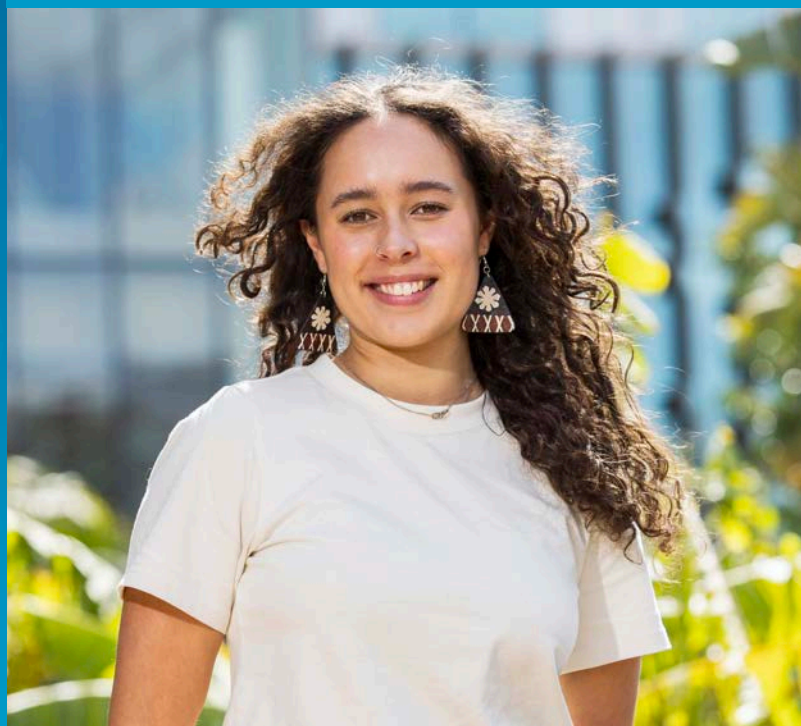
Zoe Rodan

Niuean. Hakupu

Fijian. Province of Ba

Graduate: Bachelor of Science (Psychology)

Student: Postgraduate Diploma in Science



“Run it straight. Aua le fefe. (Don’t be scared.)” were words my eldest brother used to tell all of us when we were at a crossroads or came across challenges. I never thought I would be at university. Fortunately, I have a whole village of people who believe in me and encouraged me to pursue a career in social work.

“I have always wanted to pursue social work because I have a real passion in helping young Pacific men make a difference in their lives and in their communities. As a kid, I found great role models in my older brothers, Beulah and James. This ignited a passion in me to be the same to my nephews and other young kids. Also, working as a Teacher Aide for a middle school in South Auckland was an eye opener for me into the realities young people go through. This led me to apply for the Bachelor of Social Work. With regards to a future career pathway, I would like to be able to give back to my community by working as a social worker in an organisation in South Auckland.

“I have enjoyed learning about the application of theories and concepts to real world scenarios. Outside of the classroom, I love having a designated space for Pacific students in my faculty. This has encouraged me to be who I am outside of my home and in a non-Pacific institution. Being part of the Tuākana Pacific Success programme in the Faculty of Education and Social Work has given me the confidence to be prouder of who I am and of my story.

“As a younger adult deciding on a career pathway, university seemed like a distant dream, especially because I did not have University Entrance or the credits needed to get into my degree. Being afforded the opportunity to be here at university and to pursue something I am passionate about has only been possible through my mother’s prayers.”

Va’a Reuben Koale

Samoan. Aele, Vaivase, Salailua

Tuvaluan. Nanumea

Student: Bachelor of Social Work, Year 2



Pacific student groups

The University's Pacific student groups offer cultural and social communities of support in various spaces around campus.

Auckland University Pacific Island Students' Association (AUPISA)

The Auckland University Pacific Island Students' Association (AUPISA) is the student body for all Pacific students at the University of Auckland. It seeks to serve Pacific students through a series of events designed to cater to social, cultural and academic needs. AUPISA recognises the importance of Pacific cultures on campus, and the need to profile, elevate, maintain and celebrate them as we collectively navigate the path towards academic excellence.

aupisapresident@gmail.com
[@aupisa_uoa](https://www.instagram.com/aupisa_uoa)

South Pacific Indigenous Engineering Students (SPIES)

The South Pacific Indigenous Engineering Students (SPIES) association was formed by and for Māori and Pacific Engineering students. We encourage and support Māori and Pacific students to enter their discipline of choice within Engineering.

spies@auckland.ac.nz
[@spiesuoa](https://www.instagram.com/spiesuoa)
+64 9 373 7599 ext 86099

Pacific Islands Law Students' Association (PILSA)

PILSA provides a range of academic, cultural and social activities for members throughout the year, including study fono and networking opportunities.

pilsa@auckland.ac.nz
[@pilsa_uoa](https://www.instagram.com/pilsa_uoa)

Commerce 'O Pasifika (Commerce Association for Pacific students)

Commerce 'O Pasifika is a club for undergraduate and postgraduate Pacific students. We offer year-round social and cultural activities, plus a range of networking events with industry contacts and major corporates. We provide a stimulating environment in which to exchange ideas and put business theory into practice.

commerceopasifika@gmail.com
[@uoacop](https://www.instagram.com/uoacop)

Ngārehu O Te Mātauranga (Māori and Pacific Health Students Association)

We aim to increase the unity and empowerment of Māori and Pacific students within the Faculty of Medical and Health Sciences. We organise social events, engage with the wider community and uphold cultural awareness and its important place in University life. nrm.uoa@gmail.com

Auckland Pasifika Health Initiative (APHI)

APHI brings together Pasifika students enrolled in health-related programmes across all faculties at the University of Auckland. It provides:

- An opportunity for students in health-related programmes to come together and celebrate their Pacific cultures at the University
- A support network of Pacific students at the University who have had, or are going through, similar experiences in their health-related degree
- A point of contact for organisations who want to collaborate with Pacific health students at the University of Auckland
- A safe cultural space for discussions around Pacific health

APHIexecutive@gmail.com
[@aphi_uoa](https://www.instagram.com/aphi_uoa)

Campus Life

Get involved! Our University has recreation services, 200 student-led clubs, and plenty of opportunities for you to meet people, develop new skills, explore your leadership potential, and give back to the community.

[auckland.ac.nz/studentlife](https://www.auckland.ac.nz/studentlife)



Other pathways to study

We have various alternative pathways to bridge the gap between secondary school and the University of Auckland.

UniBound Summer

This programme is designed for Pacific school leavers who could benefit from a preparation programme that introduces them to the University of Auckland and its facilities. UniBound is designed to support future success in students' chosen field of study. UniBound Summer is for Indigenous Pacific students and Tōia Ki Waipapa is for our rangatahi Māori. UniBound Summer is a five-week academic enrichment programme that will take place from January to February 2026; from 9am–4pm Monday to Friday. Registrations are open for all Pacific students who have shown interest in, or already applied for, a University of Auckland programme. Students who have not yet formally applied to the University will receive guidance and assistance in doing so.

UniBound Summer is also open to students of Indigenous Pacific descent who have not achieved University Entrance or received an offer from the University. They will be considered for a place in the Tertiary Foundation Certificate (TFC). Applications to the TFC will be made for relevant students during UniBound Summer. The UniBound team will provide pastoral and academic support during the TFC.

Acceptance into the UniBound Summer programme does not imply that application for admission to any other University programme will also be accepted.

0800 61 62 63
unibound@auckland.ac.nz
auckland.ac.nz/unibound

Tōia Ki Waipapa

Tōia Ki Waipapa is the Māori equivalent to UniBound Summer.

Students enrol in a course in Summer School which can go towards their future degree.

Tōia ki Waipapa runs concurrently with UniBound Summer and is for all Māori school leavers who may be considering a tertiary pathway.

The Kaitohutohu Tautoko Taurira ki Tōia Ki Waipapa is Mereana Toki.

m.toki@auckland.ac.nz

Hikitia Te Ora – Certificate in Health Sciences (CertHSc)

Hikitia Te Ora may be your best starting point for a health career. This one-year programme provides Māori and Pacific students with the skills and content knowledge they need for health professional study in the Faculty of Medical and Health Sciences. If you're a school leaver, or returning to study, the CertHSc can help strengthen your sciences, improve your academic writing and prepare you for success. Anyone wishing to be considered for the CertHSc must attend the Māori and Pacific Admission Scheme's (MAPAS) General Interviews.

0800 202 099
certificate@auckland.ac.nz
auckland.ac.nz/certhsc

The Tertiary Foundation Certificate (TFC)

This full-time, one-year specialist foundation programme will help bridge your way into tertiary studies. The TFC helps you prepare for and enter the BA or BEd (Teaching), as well as the BSc and most other limited-entry programmes, provided that you meet the entry grade requirement. Through the TFC, you will gain a University Entrance qualification with which to apply for bachelors programmes at the University of Auckland and elsewhere. The TFC is delivered at the City, South Auckland and Tai Tokerau campuses.

+64 9 923 4145 or **923 7335**
tfc@auckland.ac.nz
auckland.ac.nz/tfc

New Start

New Start will help you develop the confidence and skills for studying at university. You must be 20 years or over, be a New Zealand citizen or permanent resident, and have a good command of English. New Start is a realistic introduction to first-year study. The courses are part-time and provide a pathway into a range of undergraduate programmes at the University of Auckland.

- **NSGEN 47 New Start General** will prepare you for an undergraduate degree in Arts, Business, Education, Social Work, or Law.
- **NSMAT 14 Mathematics Preparation for University** is designed to be taken with NSGEN 47 to prepare you for entry into the University of Auckland's Business School. Both courses are compulsory for those who plan to gain admission from New Start to the Business School.
- **NSMAT 10 Mathematics Fundamentals** is a short, intensive course, taught on Saturdays in a workshop format. It's designed to prepare you for NSMAT 14.

If you apply for NSMAT courses, you'll need to sit a short assessment. Results from this assessment will be used to determine which course will suit your learning needs.

New Start students are not eligible for Studylink funding. If you're experiencing financial hardship, please apply for a New Start award.

New Start is offered at the City, South Auckland and Tai Tokerau campuses.

+64 9 923 7832
newstart@auckland.ac.nz
auckland.ac.nz/newstart

Te Papa Ako o Tai Tonga – South Auckland Campus

The University maintains its presence in South Auckland through its Manukau campus. We offer University foundation and preparation programmes as well as selected courses that are part of Business and Education programmes.

For students living in the south, access to local courses and study spaces eases transport and travel challenges. The South Auckland Student Hub is there for all local University of Auckland students, providing academic and personal support, and IT and administration services. And our student commons facility provides study spaces during standard teaching hours as well as evenings and weekends.

You will also be able to attend workshops and access other support services within the University at our campus.

taitonga@auckland.ac.nz
+64 27 244 2637

Scholarships and financial assistance for Pacific students

Scholarship name	Eligibility	Duration	Value per annum	Application closing date
University of Auckland Top Achiever Scholarship	New Zealand citizens and permanent residents demonstrating exceptional academic performance combined with outstanding sporting, artistic, cultural and/or leadership achievements intending to enrol full-time in an undergraduate degree programme or Certificate in Health Sciences.	1 year	1 year catered accommodation and \$5,000 study support. Total value of up to \$25,000	August tbc
University of Auckland Pacific Academic Excellence Scholarship	New Zealand Indigenous Pacific students who are New Zealand Citizens or Permanent Residents demonstrating academic achievement, taking into account a number of factors that can impact on an individual's ability to participate at university, intending to enrol full-time in an undergraduate degree or Certificate in Health Sciences	3 years	1 year catered accommodation and \$5,000 study support. Total value of up to \$25,000.	August tbc
University of Auckland Vaka Moana Scholarship	To recognise Indigenous Pacific students who have strong engagement with their school and community, or the arts, or have played an exceptional leadership role in sports or cultural contexts, as well as demonstrating academic ability	1 year	1 year catered accommodation and laptop for study support.	August tbc
University of Auckland Academic Potential Scholarship	New Zealand citizens and permanent residents demonstrating academic achievement (taking into account a number of factors that can impact on an individual's ability to participate at university) intending to enrol full-time in an undergraduate degree programme or Certificate in Health Sciences. Note: Selection committee will determine which tier will be awarded.	3 years	Tier 1: 1 year catered accommodation and \$5,000 for study support. Total value of up to \$25,000. Tier 2: \$10,000 for study support Tier 3: \$6,000 for study support	August tbc
AUEA Pacific Engineering Pathway Award	Pacific students, first year full-time, Bachelor of Engineering (Hons) at the University of Auckland	1 year	\$2,500–\$10,000	October tbc
Kick Start Māori and Pacific Award	To assist four first-year Māori or Pacific Bachelor of Engineering (Hons) students; based on academic results in final year of high school	1 year	\$2,000	January tbc
TeachNZ Scholarships (Ministry of Education)	For details, please refer to teachnz.govt.nz		Varies	To be announced teachnz.govt.nz/scholarships
Business School Māori and Pacific Tautoko Grants	Māori or Pacific students undertaking full-time undergraduate study in the Business School	1 year	Up to \$2,500	March tbc
Frances Barkley Scholarship	Māori or Pacific students enrolling in their first year of undergraduate study towards a BSc majoring in Biological Sciences, Biomedical Science, Ecology or Marine Science or a BAdvSci(Hons) in Ecology or Marine Science	Up to 3 years	Up to \$5,000 tuition fees credit	October tbc
360 International Award for Māori and Pacific Students	Māori or Pacific students on 360 international exchange, assessed on cumulative GPA and personal statements.	Up to 1 year	Up to \$6,000	July (for Semester One of following year) tbc December (for Semester Two of following year) tbc
Jackson Family Foundation Scholarships	Women of Cook Island descent enrolled in full-time study in any year of an undergraduate or postgraduate degree	1 year	Up to \$11,000	February tbc
Kool Family Nursing Award	To financially support a Bachelor of Nursing student of Pacific descent who is experiencing financial difficulty.	1 year	\$1,500	April tbc
University of Auckland Rongo Manusina Scholarship	For Māori and Pacific students enrolling in any year of a Bachelor of Communication or associated conjoint degree	1 year	\$5,000 each	April and October tbc
Bachelor of Design Award for Pacific Students	Pacific students enrolled full-time in a Bachelor of Design; based on academic achievement and a personal statement	1 year	\$5,000	March tbc
Jasmax Scholarship for Māori and Pacific Students	Māori or Pacific students enrolling in a Bachelor of Architecture; based on academic achievement and financial hardship. Applicants must state their ancestry or iwi affiliations.	Up to 5 years	\$5,000 pa	June tbc
Toloa Tertiary Scholarships	To encourage Pacific students to pursue studies in STEM subjects			For details, please refer to https://bit.ly/3FzsOJ1
Scholarship dates and details are subject to change. For the most up-to-date information visit auckland.ac.nz/pacificscholarships				

“When I was young, I wanted to become a doctor to take care of my mum when she grew old. This is such a naive thought in retrospect but none-the-less common among Samoans, reflecting the value we place on our elderly.”

“Throughout my secondary and early tertiary education, I learned of unfair health outcomes between Pacific communities and non-Pacific communities. I also enjoyed learning sciences. The need for more Pacific doctors in the health workforce, my interest in sciences, and my values as a Samoan married to create my passion for medicine.”

“Lately, I’ve been interested in surgery. My qualification allows me to keep my options open. A bigger priority right now is to work in an area where my efforts will impact the health of Pacific people.

“The best part of my programme of study is the feeling of doing something right for my patients. This can be the simplest thing, like making an ill child smile. Or being able to translate a consultation for a Samoan speaking patient or family. Pacific patients always reinforce the importance of seeing a familiar face and acknowledge therapeutic relationships when connecting with aspiring Pacific health professionals. Moments like these always remind me that I’m in the right place and I’m doing the right thing.

“Managing my time was an important skill I knew I had to develop quickly. Visual aids such as wall planners, to do lists and monthly calendars were effective measures that allowed me to manage my time and therefore juggle my commitments. Generally, however, if I manage my study commitments well, the other important commitments in my life (church and family) have been manageable.

“The most valuable thing from my studies is the privilege of being let in to the lives of my patients. They are the most important teachers in our degree, and sharing their lives with us will make us good doctors in the future. Doing this for patients requires vulnerability, trust and hope in us as future health professionals.”

Colin Chan Chui

Samoan. Afega, Fagali’i, Sataoa (Upolu), Salelologa (Savaii).

Graduate: Bachelor of Biomedical Science (Honours)

Student: Bachelor of Medicine and Bachelor of Surgery (Year 6)



How will the University support me?

We have a variety of support services to help you. These range from study spaces, mentors and scholarships to advisers and counsellors dedicated to helping our Pacific students.

Te Tumu Herenga Libraries and Learning Services

This programme is coordinated by a team of Māori and Pacific Learning Advisers dedicated to advancing Māori and Pacific scholars' academic skills through research and culturally-informed teaching and learning practices. They provide a friendly and professional service at undergraduate and postgraduate levels. They create a learning environment that values, respects and encourages Māori and Pacific scholars and helps them to thrive. Te Fale Pouāwhina offers wānanga, workshops, study groups and advisory sessions to promote the academic excellence and foster the aspirations of Māori and Pacific scholars. For more information, send an email or drop in and see us.

tfp@auckland.ac.nz

Level 1, Kate Edger Information Commons,
2 Alfred St, City Campus



*Join our
community.
We will support
you.*

Career Development and Employability Services (CDES)

CDES has a designated Pacific Career Development Consultant who provides specialised services tailored to the career development needs of Pacific students.

CDES offers career workshops, expo events, personalised services and online tools. These help students to identify opportunities while equipping them with the knowledge, understanding and skills that can help them to compete in the world of work.

They also run exciting employer engagement events throughout the year. These are a great opportunity for students to explore various industries and jobs of interest.

auckland.ac.nz/cdes

Education and Social Justice

Pasifika Success

Pasifika Success encourages and empowers Pacific Education and Social Justice students. The Pasifika Success team provides guidance around academic writing and study skills, as well as providing pastoral care. Pasifika Success is grounded in Pacific cultural values, which acknowledge and validate Pacific ways of learning and knowing. They also run weekly workshops, tutorials and annual Pasifika events for interested students.

Pasifika Success Coordinator

Tim Baice

+64 9 373 7599 ext 48469

pasifika.success@auckland.ac.nz

auckland.ac.nz/education/pasifika

Students with children

There are three early childhood centres and one Kōhanga Reo on the City and Grafton campuses. We offer places to tamariki aged three months to school age. Our dedicated parent spaces and breastfeeding spaces provide facilities for caregivers and children.

auckland.ac.nz/parentingsupport

Maclaurin Chapel

Maclaurin Chapel is part of the University of Auckland and is a place where groups of people can meet for fellowship and worship. The Ratonga Pā Whakawairua, Maclaurin Chaplaincy offers interdenominational pastoral care and spiritual guidance to students and staff on all campuses. So feel free to check out the services and make the place your own.

Rev. Dr Carolyn Kelly

carolyn.kelly@auckland.ac.nz

+64 9 373 7588 ext 87732

Chapel Administrator

chapelsec@auckland.ac.nz

jannine.wood@auckland.ac.nz

+64 9 373 7599 ext 87731

auckland.ac.nz/maclaurin

University Health and Counselling Service

University Health and Counselling Service (UHCS) offers a comprehensive service to promote the health and wellbeing of students. The care team at UHCS is a skilled and experienced group of General Practitioners (GPs), nurses, counsellors and psychologists, all of whom are committed to providing a quality healthcare service. We have staff who offer a range of services within the spirit of whanaungatanga/fanau. These include health consultations, counselling, support for assignment extensions and aegrotat and compassionate exam and test considerations.

To make an appointment with a doctor or nurse, please phone +64 9 923 7681

To make a counselling appointment, please register online at

auckland.ac.nz/healthandcounselling

“A 16-year-old version of myself in Samoa would have considered the idea of pursuing a PhD as daunting and foreign. It was never a goal that was spoken about. However, research opportunities as an undergraduate and collaboration with academics during my short time in industry changed all that.”

“My research will look at developing a ‘Multi-level Resilience Framework for Tsunami Disasters in Pacific Island Countries’. I decided to pursue my research at UoA for the betterment of my community. More importantly, it will help to set a precedent for future Māori and Pacific students to pursue postgraduate studies.

“Auckland’s PhD programme provides an exceptional platform for research in disaster resilience. The University’s core values of sustainability, inclusivity, and innovation align perfectly with my research goals, fostering an environment where groundbreaking ideas can flourish.

“Embrace our Pasifika way. Realise that what makes us ‘stand out’ in society is what makes us ‘outstanding’, for there is so much power in embracing our unique traits. Our native dialect. Embrace it. The floral patterns of our traditional wear. Embrace them. Our values of love, respect, and humility. Embrace them especially. Embrace meaningful relationships: Uni is a great place to meet people from diverse backgrounds. Engage with your peers, professors, and mentors. These connections will enrich your learning experience and open doors to future opportunities. Embrace side-hustles. Life is short, and opportunities rarely come twice.

“This is a great opportunity for personal growth, a chance to grow alongside others and to become the best version of myself in a safe and supportive space. My personal development will allow me to serve my people as the best engineer I can be, equipped with the knowledge, skills, and passion to make a real difference in their lives.”

Vensel Margraff

Samoan. Si’usega, Ululoloa
Graduate: Bachelor of Engineering (Hons)
Student: PhD in Engineering (Year 1)





“O le ala i le pule, o le tautua. The pathway to leadership is through service.” This guiding principle has shaped my way of life coming into university. Looking forward, I aspire to work in the finance and technology field where I can contribute meaningfully to the economic development and quality of life of Samoa.”

“I chose to pursue a Bachelor of Commerce after witnessing firsthand the systemic challenges that Samoa faces as our people learn to adapt to this ever-evolving digital world. Together with my family’s passion and background in business, I was motivated and inspired to pursue a career pathway in Accounting and Information Systems.

“I am driven to help bridge the gap between traditional accounting practices and cutting-edge technology by implementing advanced information systems to streamline financial processes, enhance data accuracy and improve decision-making.

“My grandfather always taught us value of education as a pathway to success. Moving from Samoa to Aotearoa to pursue my studies was not an easy transition. However, with a strong support system and prayer warriors by my side, I am reminded every day that my achievements are not solely mine. Rather they’re the product of collective effort and support from my family, friends, and community. Knowing that motivates me to balance my commitments diligently and with gratitude for the opportunities that I can have today.

“What I find most valuable about my studies is the emphasis on team-based learning. Through group projects, industry events and networking opportunities, I can collaborate with and learn from other like-minded individuals. Being in a team-based learning environment has not only boosted my confidence but also opened the door to opportunities for me to expand my academic and professional networks. As I prepare to enter the workforce, building and maintaining networks with fellow students, teaching fellows, and industry professionals becomes essential for my career development.”

Danise Sinera Margraff

Samoan. Si’usega, Ululoloa
Student: Bachelor of Commerce (Year 3)

“I love learning Indigenous research methodology and decolonised research methodologies in the Pacific. This led me to create my own research methodology, ‘Noken Weaving’. Further, I love the study environment where everyone respects and encourages each other to accomplish their study goals. I also received tremendous support from my PhD supervisors; they are nice and friendly. Overall, I feel blessed to be part of the Pacific Studies department.”

“I was born and raised in urban Merauke, New Guinea, by a migrant Muyu father and an Indonesian mother. My father’s past mobility has influenced my identity formation. The urban lifestyle has disconnected me from knowing my father’s roots. This became the main reason I enrolled in the PhD programme: to reconnect to my father’s tribe, the Muyu. Also, there is a lack of studies that deeply focus on the Muyu tribe’s mobility and their noken (traditional bag) weaving. I hope the qualification will allow me to conduct more research on the Muyu’s past and current mobility, which affects women and their noken weaving practice.

“As an international student, living and studying in Auckland is hard and expensive. I must think hard about the deadline of my scholarship and the expiration date of my visa. Therefore, I manage my time well for studying while working part-time. Every minute has counted for me.

“I usually encourage West Papua’s younger generation, especially the girls. First, do not get married too early. Focus on your education. Second, there are many university scholarship schemes for West Papuans. You just need a strong motivation and commitment to get those opportunities. Lastly, if you fail at the first attempt, never give up. The first failure will become an important lesson to reach your goal, so try again until you nail it.”

Veronika Triariyani Kanem

Muyu Tribe, West Papua
PhD in Pacific Studies (final year)





Celebrating Our Village, Our Kāinga

Congratulations to all our Pacific graduates! You have worked exceptionally hard to reach this milestone. We are proud of your achievements and we join with your families, aiga and communities to celebrate your success!

Follow us on Facebook and Instagram:
[facebook.com/PacificUniofAkl](https://www.facebook.com/PacificUniofAkl)
[instagram.com/pacificatuoa](https://www.instagram.com/pacificatuoa)



2025 Events for Pacific school students

Learn about key events to support your journey from secondary school to University. This chart is a summary, based on information available at the time of printing. We have a dedicated page for 2025 events for school students and aiga on our website. We will update this page with times and venues as soon as they're confirmed. Please bookmark us and return later to check out details for events that you wish to attend.

auckland.ac.nz/pacific-events

JANUARY	FEBRUARY	MARCH	APRIL	MAY	JUNE
UniBound Summer programme	UniBound Summer programme Orientation Week: Māori and Pacific Welcome	ASB Polyfest Semester One begins		South Auckland Maths Challenge (SAMC)	SAMC Semester One ends
JULY	AUGUST	SEPTEMBER	OCTOBER	NOVEMBER	
Level Up – Year 10 Māori and Pacific Parents Evening SAMC Semester Two begins	Pacific Academy Sessions begin, Tai Tonga Campus, Manukau SAMC Manawa Mai University Open Day	Pacific Academy sessions Tai Tonga Gala Day	Study Ako	OVOK Semester Two ends	

UniBound Summer

UniBound Summer is an academic enrichment programme for school leavers who are entering study at the University of Auckland. UniBound is about supporting your transition from school to the University.

auckland.ac.nz/unibound

Māori and Pacific Welcome

The University invites all first-year Pacific students to our annual Māori and Pacific Welcome. Held during Orientation Week, the Māori and Pacific Welcome celebrates your success, and introduces you to staff and support networks who will be part of your family community on campus. You will also meet the Pacific Equity Adviser and your Tuākana network.

ASB POLYFEST

Polyfest is a celebration of culture and community. We support all our Pacific secondary school students and their families in celebrating their rich heritage over this four-day cultural festival. The University of Auckland is the proud sponsor of the Samoan stage. Our team of dedicated staff and students are also on hand to provide information about our programmes.

Pacific Academy

Pacific Academy is a tutoring programme run in several high schools across South and West Auckland. This programme looks to provide students an opportunity to receive after-school subject tutoring from current University of Auckland students.

Māori and Pacific Parents' Evening (MPPE)

Bring your parents, families and whānau to learn about the programmes, entry requirements, scholarships and support offered at the University of Auckland. A great evening for our Year 12 and Year 13 students and families.

Our Village Our Kāinga (OVOK)

Formerly known as STEAM Ahead, Our Village Our Kāinga includes presentations about all faculties. This is a one-day informative programme for Māori and Pacific Year 13 students.

Level Up – Year 9

This programme, offered to Pacific students in South Auckland secondary schools, seeks to motivate and encourage our young Pacific students in their learning journey – to encourage pride in their Pacific heritage and to recognise their value as Pacific scholars who will contribute to their community in the future.

Level Up – Year 10

Level Up – Year 10 offers workshops focused on Business, Engineering, Architecture, Medicine and Science. This faculty-driven programme is interactive and focuses on encouraging Māori and Pacific Year 10 students with an interest in these subjects.

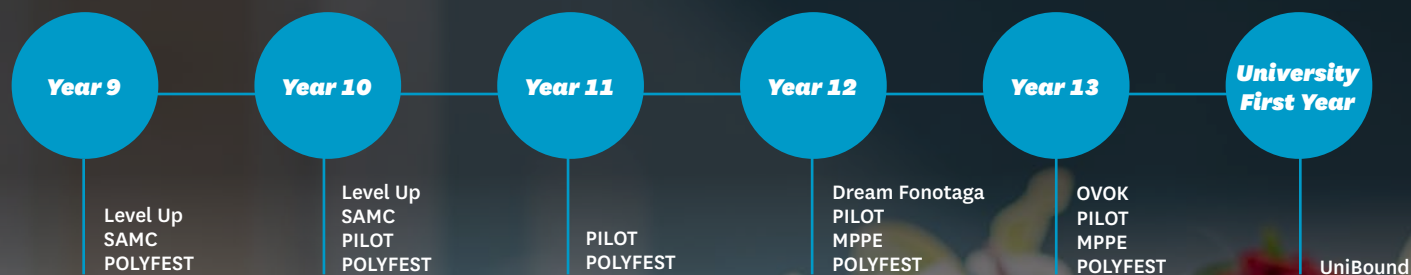
Dream Fonotaga

Dream Fonotaga is our annual Year 12 programme that supports Pacific students who are looking to pursue tertiary study.

South Auckland Maths Challenge (SAMC)

The South Auckland Maths Challenge is for Year 9 and 10 students. This challenge takes place prior to the official Mathex competition and prepares South Auckland students for this day.

Your journey with us at a glance



It's time to apply

So you've made your decision on what you want to study, and now it's time to apply. What do you need to do? It's a two-step process to apply for and enrol in your chosen programme.

First you need to apply

Go online and complete the Application for Admission. If you haven't already, you'll be asked to sign up for a new account. It's easy, and you'll soon be underway in making your application.

auckland.ac.nz/apply

Next you will receive an acknowledgement email asking you to provide supporting documents (and in some cases to complete other requirements*) before your application can be assessed.

Remember, you can apply for more than one programme. We'll be assessing your application, and you can check your application status online at any time. Be patient though – documents can take 3–4 weeks to process during peak admission periods. Some of your documents might take longer to process than others, despite being sent in at the same time.

If your application is successful, we'll email you an offer – normally from mid-January.**

To accept or decline this offer, log onto

auckland.ac.nz/apply

Next you need to enrol

Once you've accepted an offer of a place in a programme, you can enrol in a course. If you need some help with the enrolment process, you can take an online tutorial.

auckland.ac.nz/enrolment

Next you need to make sure you pay your fees!

auckland.ac.nz/fees

Stuck? At any point in the process you can find answers to your questions 24/7.

auckland.ac.nz/askauckland

Alternatively, there's someone who can help during business hours.

0800 61 62 63 or studentinfo@auckland.ac.nz

Some late applications may be accepted after school results are received. It is advisable, however, to apply for all programmes that you might wish to enrol in before the published closing date. Multiple applications are acceptable, and all applications will be considered when academic results are available.



Find out more
auckland.ac.nz/apply

Closing dates for applications for admission in 2026

Medical Imaging (Honours) (Part II); Medicine (Part II); Optometry (Part II); Pharmacy (Part II)	1 July 2025
Law (Part II); Social Justice; Sport, Health and Physical Education; Special Admission; Summer School 2026	1 December 2025
Architectural Studies; Arts; Commerce; Dance Studies; Design; Education (Teaching); Engineering (Honours); Fine Arts; Global Studies; Graduate Diploma in Teaching (Early Childhood Education, Primary and Secondary); Health Sciences; Law (Part I); Music; Nursing; Property; Science; Urban Planning	8 December 2025



Sign up and be first to hear about scholarship opportunities, events, new programmes, and everything else you need to know about studying with us.

auckland.ac.nz/registration

*For some programmes, you may be required to submit supplementary information (eg, a portfolio of work, referee reports, an online form) or to attend an interview/audition.

**If you are not offered a place in the programme(s) of your choice, you will receive an email outlining alternative options. Your final offer of place depends on two things: your admission to the University (which for school leavers may depend on your final school results) and your assessment by the relevant faculty.



For personal assistance, please visit us at your local Student Hub, where students and whānau are welcome to talk with our expert advisers:

Email us: auckland.ac.nz/ask-us

Or phone: 0800 61 62 63

International: +64 9 373 7513

CITY CAMPUS

General Library, Building 109,
5 Alfred Street, Auckland

GRAFTON CAMPUS

Philson Library, Building 503
Level 1, 85 Park Rd, Grafton
(Entry via the Atrium)

SOUTH AUCKLAND CAMPUS

Te Papa Ako o Tai Tonga
6 Osterley Way, Manukau

WHANGĀREI CAMPUS

Te Papa Ako o Tai Tokerau: L Block,
13 Alexander Street,
Whangārei



**UNIVERSITY OF
AUCKLAND**
Waipapa Taumata Rau

auckland.ac.nz