



UNIVERSITY OF  
AUCKLAND  
Waipapa Taumata Rau

# UNDERGRADUATE PROSPECTUS 2026



**#1**  
UNIVERSITY IN  
NEW ZEALAND<sup>1</sup>

**#1**  
GRADUATE  
EMPLOYABILITY<sup>2</sup>

**TOP 50**  
IN THE WORLD  
FOR 10 SUBJECTS<sup>3</sup>

Ko Waipapa Taumata  
nei, e karanga nei ki t  
ki te kai i te mātaura  
Nau mai, haere mai,  
ki te whare whakairo

We are Waipapa Taumata Rau, we greet, we call to the many who desire the sustenance of knowledge.

Welcome, come forth and fasten to the carved meeting house, Tāne-nui-a-rangi.

Rau mātou, e mihi  
e marea e hiahia ana  
nga

herea mai tōu waka  
o Tāne-nui-a-rangi

# Nau mai, haere mai

## A warm welcome to New Zealand's highest ranked university

Nau mai, haere mai. Welcome to Waipapa Taumata Rau, University of Auckland. We look forward to you joining us at Aotearoa New Zealand's top-ranked university. Our university is ranked 65th in the world.

Studying with us will see you join a community dedicated to excellence in learning, teaching and research, and to our collective contributions to the challenges facing the world.

Ours is an exciting, diverse, and inclusive institution, offering students opportunities to study with globally recognised experts, entrepreneurs and peers from across disciplines and around the world. We are focused on preparing students for a dynamic future as scholars, leaders, innovators and global citizens. We foster graduates who make the world better tomorrow than it is today.

The University of Auckland is a comprehensive university offering courses across all disciplines. Today's students are preparing for a future that will not only require them to have specific discipline knowledge but also to be critical thinkers who seek out solutions with a broader understanding of the world, made possible through course content from other disciplines.

Waipapa Taumata Rau is a dynamic University founded more than 140 years ago in the country's largest city, Tāmaki Makaurau. Our commitment to a strong partnership with our local iwi or tribe, Ngāti Whātua Ōrākei, is proudly reflected across the University and its activities.

As a globally successful University, we look out into the world, starting with the South Pacific and reaching out to Asia and beyond. Our connections with prestigious universities and research organisations offer opportunities for students to study and research, gaining understanding and knowledge that will become building blocks for their futures.

More than 5,000 students graduate each year with a University of Auckland bachelors degree. Thousands choose to continue with postgraduate study. Others leave to enter the workforce, with the University ranked top in New Zealand for graduate employment.

Starting university is a special time for students. We look forward to making the time you spend with us rewarding while building a connection with you that will last a lifetime.

Hei konā mai – Goodbye for now.



**DAWN FRESHWATER**  
Ihorangi | Vice-Chancellor  
Waipapa Taumata Rau | University of Auckland

\* QS World University Rankings 2024

Cover attributions <sup>1</sup>Times Higher Education 2025; and QS World Rankings 2025, 65th worldwide. <sup>2</sup>QS World Rankings Graduate Employability, number one in NZ and 68th Worldwide in 2023.

<sup>3</sup>QS World Rankings by Subject 2024.





# Contents

## 01 About us

Māori ki Waipapa Taumata Rau	8
Pacific students at Waipapa Taumata Rau	10
We'll help you take on the world	12
Our unique educational experience	14
Centre for Innovation and Entrepreneurship	16
Great learning begins with great teachers	17
We're here to help you succeed	18
Life on campus	21
New Recreation Centre	23
Are you an international student?	24
360 International – Take yourself global	26
Which campus is for you?	28
We'll help you find accommodation	30

## 02 Study options

Preparation programmes	34
How degree programmes are structured	37
Architecture	38
Arts	40
Commerce	44
Communication	46
Dance Studies	48
Design	50
Education/Teaching	52
Education (TESOL)	56
Engineering	58
Fine Arts	60
Global Studies	62
Health Sciences	64
Law	68
Medical Imaging	70
Medicine	72
Music	76
Nursing	78
Optometry and Vision Science	80
Pharmacy	82
Property	84
Science	86
Social Justice Studies	90
Sport, Health and Physical Education	92
Urban Planning	94
Double your options with a conjoint programme	96

## 03 Admission

It's time to apply	99
How do you get in?	100
Other pathways to tertiary study	105
Academic English Language Requirement	107
What will it cost?	108
School-leaver/first-year scholarships and awards	109
Costs for international students	111
Dates to remember	112
Useful web addresses	113

# Māori ki Waipapa Taumata Rau

I acknowledge the work of all those before us who have demonstrated courageous leadership for Te Ao Māori. E mihi kau ana ki a rātou.

Our mission is to ensure that Māori ways of thinking, being and doing thrive at the University and we are well on this journey. Achieving this means the knowledge produced by us will positively contribute to whānau, community and iwi-led development. And flourishing Māori communities are central to a sustainable, thriving and socially-just Aotearoa New Zealand.

He kai kei aku ringa

The means to flourishing are in my hands  
Nāku noa,



**NĀ ASSOCIATE PROFESSOR  
TE KAWEHAU HOSKINS**  
Ngāti Hau, Ngāpuhi  
Ihonuku | Pro Vice-Chancellor Māori

[auckland.ac.nz/maoristudents](https://auckland.ac.nz/maoristudents)





## Waipapa Marae

Te Ao Māori ki Tāmaki

Ko Tāne-nui-a-Rangi te whare whakairo

Ko Reipae te wharekai

Ko Waipapa te marae

Ko Ngāti Whātua Ōrākei te ahi-kā-roa

Kei konei tō whānau hōu, hei manaaki, hei tiaki i a koe.

Nō reira, rukuhia te mātauranga ki tōna hōhonutanga, tukuna te tao kia rere, he kai tērā e matapoporetia ana.

## Ngā Taura Māori

Māhea noa te kite i ngā taumahatanga nui ki runga i ngā taura, ā, ko tā mātau he tautoko, he akiaki, he poipoi hoki i a tātau anō kia eke ki te pae o angitū i ngā mahi katoa.

Ngā Taura Māori is the University's official Māori Student Association. We uplift and support Māori students as they travel all the pathways they aspire to. We seek to preserve and develop the use of tikanga and Te Reo Māori within the University and amongst our taura. We strive to support Māori students in their formal education and in their awareness and understanding of their surrounding world. We aim to inspire our taura to influence their environments through an understanding of who they are as tangata whenua.

## Tōia ki Waipapa

Tōia ki Waipapa is for all Māori school leavers who may be considering a tertiary pathway. The programme allows taura the opportunity to take a university course over the summer which can be used towards their degree. The programme also offers mentoring and workshops to thoroughly prepare students for the transition.

Students will have the opportunity to take part in a number of activities both on and off campus.

You can also apply for an accommodation scholarship to live on campus for the duration of the programme. See the University of Auckland Kōkiri Raumati Scholarship.

Students who have not yet formally applied to the University will get guidance and assistance to do so.

We take a positive and friendly approach to ensure we give you the best chance for success.

[instagram.com/toia\\_uoa](https://www.instagram.com/toia_uoa)

For details about all our preparation programmes, see pg. 34.

## Libraries and Learning Services

We offer two specialist programmes for Māori and Pacific students:

### Te Fale Pouāwhina

Te Fale Pouāwhina supports students academically through workshops, wānanga and consultations. Kaupapa Māori and Pacific principles underpin our work. See pg. 20.

[auckland.ac.nz/tfp](https://auckland.ac.nz/tfp)

### Leadership Through Learning

This 12-week programme supports Māori and Pacific students to develop leadership and academic skills. See pg. 20.

[auckland.ac.nz/leadershipthroughlearning](https://auckland.ac.nz/leadershipthroughlearning)

## Tuākana

Tuākana is a Tuākana-Teina learning environment where Māori and Pacific students thrive on campus; here you will find whakawhanaungatanga, tutorials, wānanga, fonotaga, workshops and dedicated study spaces focused on success.

The communities draw from the shared whakapapa, gafa and history between Māori as tangata whenua and Pacific peoples (Tagata o le Moana-nui-o-Kiwa), all successful navigators of the vast Pacific ocean. Many hundreds of years later, we celebrate Māori kaupapa and Pacific ways of being and knowing through Tuākana-Teina learning environments.

[auckland.ac.nz/tuakana](https://auckland.ac.nz/tuakana)

## Undergraduate Targeted Admission Schemes (UTAS)

UTAS reserves a number of places in our undergraduate programmes for Māori applicants who have met the University Entrance standard but have not met the guaranteed entry score for the programme of their choice. See pg. 20.

For full information go online.

[auckland.ac.nz/utas](https://auckland.ac.nz/utas)

# Pacific students at Waipapa Taumata Rau

Kia ora, Talofa lava, Malo e lelei, Kia orana, Bula vinaka, Fakatalofa atu, Fakaalofa lahi atu, Halo Oloketa, la Orana, Mauri, Aloha, Malo ni, Hafa Adai and welcome to Aotearoa New Zealand's world-ranked University\*.

Waipapa Taumata Rau, University of Auckland is one of the Pacific's leading research universities. Our University is a special place where we support you to grow and realise your full potential. A qualification from the University of Auckland will help prepare you for a successful career in a vast range of fields and industries. Our Pacific graduates are leaders not only in their diverse Pacific communities but also in their respective fields and professions in New Zealand and internationally.

We have strong support networks to help you succeed, and there are many generous scholarships available. Please take the time to go through this Prospectus and don't hesitate to take advantage of the information, advice and assistance on offer.

We look forward to meeting you and your families.

la manuia!

Welcome to the University of Auckland



**PROFESSOR JEMAIMA TIATIA-SIAU**  
Ihonuku Te Moananui-a-Kiwa  
Pro Vice-Chancellor Pacific

The team at the Office of the Pro Vice-Chancellor Pacific walk alongside and support our Pacific students and their families throughout their journey here. We look forward to offering you academic and pastoral guidance – and helping to ensure you have a great experience at the University. In addition to our work on campus, we also run events during the year that support our Pacific communities throughout New Zealand.

Please feel free to contact us if you're considering the University of Auckland, are already enrolled here, or you just want to find out more about how we can help.

For more information visit us online.  
[auckland.ac.nz/pacific](https://auckland.ac.nz/pacific)

\*[auckland.ac.nz/world-ranked](https://auckland.ac.nz/world-ranked)



## Our Fale Pasifika

'The Fale' is the centre of the University's Pacific community. 'O lagi Atea Moana (Culture Space) is a safe and welcoming place for our Pacific students.

## Auckland University Pacific Island Students' Association (AUPISA)

The Auckland University Pacific Island Students' Association (AUPISA) is the student body for all Pacific students at the University of Auckland. We serve Pacific students through a series of events designed to cater to social, cultural and academic needs. AUPISA recognises the importance of Pacific cultures on campus, and the need to profile, elevate, maintain and celebrate them as we collectively navigate the path towards academic excellence.

[aupisapresident@gmail.com](mailto:aupisapresident@gmail.com)  
[@aupisa\\_uoa](https://www.aupisa.uoa.ac.nz)

Many other student groups will warmly welcome you and offer many opportunities to energise and enrich your University experience. For example, every faculty hosts a proactive Pacific students' association.

## Libraries and Learning Services

We offer two specialist programmes for Māori and Pacific students:

### Te Fale Pouāwhina

Te Fale Pouāwhina supports students academically through workshops, wānanga and consultations. Kaupapa Māori and Pacific principles underpin our work. See pg. 20.

[auckland.ac.nz/tfp](https://www.auckland.ac.nz/tfp)

### Leadership Through Learning

This 12-week programme supports Māori and Pacific students to develop leadership and academic skills. See pg. 20.

[auckland.ac.nz/leadershipthroughlearning](https://www.auckland.ac.nz/leadershipthroughlearning)

## Tuākana

Tuākana is a Tuākana-Teina learning environment where Māori and Pacific students thrive on campus; here you will find whakawhanaungatanga, tutorials, wānanga, fonotaga, workshops and dedicated study spaces focused on success.

The communities draw from the shared whakapapa, gafa and history between Māori as

tangata whenua and Pacific peoples (Tagata o le Moana-nui-o-Kiwa), all successful navigators of the vast Pacific ocean. Many hundreds of years later, we celebrate Māori kaupapa and Pacific ways of being and knowing through Tuākana-Teina learning environments.

## UniBound Summer – Academic Enrichment Programme

UniBound Summer is designed to prepare Pacific school leavers for university studies. We aim to prepare students to achieve at the University of Auckland, and to help them transition into university life.

Running during the summer school period from early January to mid-February, the course includes:

- Academic workshop sessions to help you prepare for your tertiary study
- Empowering our Pacific students to remain grounded in their identity
- Off-campus learning activities such as field trips, sports days and intercampus visits
- ARTSGEN 104: enrol in a credit-bearing course during the summer
- Team-building activities and peer mentoring
- HOP cards for travel during the summer programme

We also welcome students who have not achieved University Entrance or received an offer from the University. During UniBound Summer, you can apply for Tertiary Foundation Certificate (TFC). See pg. 34. The UniBound team will support you during your TFC year.

For more information on UniBound and how to apply, please visit our webpages.

[auckland.ac.nz/unibound](https://www.auckland.ac.nz/unibound)

For details about all our preparation programmes, see pg. 34.

## Undergraduate Targeted Admission Schemes (UTAS)

UTAS reserves a number of places in our undergraduate programmes for Pacific applicants who have met the University Entrance standard but have not met the guaranteed entry score for the programme of their choice. See pg. 20.

[auckland.ac.nz/utas](https://www.auckland.ac.nz/utas)

# We'll help you take on the world!

The world is evolving more quickly than ever before. And with increasing global connectedness, study and employment are at the crest of this new wave.

Whatever you study, you may end up working for an organisation with global links. Or perhaps you'll choose to work abroad. In either case, your University of Auckland degree will compare well against those from overseas. Many of our programmes include an international dimension, and none more so than the Bachelor of Global Studies. See p. 62.  
[auckland.ac.nz/BGlobalSt](https://auckland.ac.nz/BGlobalSt)

Through our 360 International programme, we offer a range of brilliant opportunities to expand your network – and your impact as a global citizen. Our offerings range from semester-long exchanges to internships and summer programmes, with virtual and in-country opportunities across more than 30 countries. See p. 26. Every year we offer \$500,000 in scholarships to support learning abroad. So start planning your trip of a lifetime now!

[auckland.ac.nz/360](https://auckland.ac.nz/360)

We also attract a great many international students from 120 countries. So even if you don't study overseas, you can make contacts and friends amongst our diverse global community.



**No.1**  
*for Global  
Employability\**

\*QS World Rankings Graduate Employability, number one in NZ and 68th Worldwide in 2022



# Our unique educational experience

We understand that everyone is different, and no two individuals' needs are quite the same. Our educational experience celebrates this uniqueness by ensuring you can learn in a safe space that enables you to build relationships and connect with others at University, in Aotearoa, and overseas.

## Waipapa Taumata Rau (WTR) core course

All programmes include a Waipapa Taumata Rau core course that should be completed in your first year.

Waipapa Taumata Rau is the Māori name gifted to the University of Auckland. The courses are called this to symbolise your aspirations to succeed in your studies at our University.

Designed to help your transition into University life, your WTR course provides knowledge vital to your studies. You'll also develop essential skills, including critical and ethical thinking, effective communication, and the ability to work well with others.

Each faculty's course teaches you why place matters, introducing you to knowledge associated with the University, the wider city, this country, its people and history, including Te Tiriti o Waitangi. You'll learn about different knowledge systems that underpin your area of study to provide a foundation for your future learning.

Your Waipapa Taumata Rau core course will play a key role in shaping your first year of study with us. Conjoint students can choose which of their faculty WTR courses to take, as a WTR course can only be completed once.

[auckland.ac.nz/wtr-course](https://auckland.ac.nz/wtr-course)

## Transdisciplinary Futures

As part of the University's commitment to providing transdisciplinary learning opportunities, from 2026 you will be able to take a Transdisciplinary Futures course in your undergraduate degree.

Transdisciplinary learning focuses on the development of the skills and mindsets needed to respond to complex problems. It works on the idea that complex issues can be solved if worked on collectively through collaboration, discussions and co-design. Transdisciplinary skills are increasingly recognised as essential to the workplace as well as to your learning.

The world is changing rapidly, and there's never been a better time to look at global changes and the challenges they bring. Transdisciplinary Futures courses bring together students from across the University, and staff from diverse backgrounds, to collaborate and work collectively to explore alternatives for a better future.

Choose from a range of Transdisciplinary Futures courses such as Democracy in the 21st Century, Our Environmental Futures: Te Taiao Tangata, Artificial Intelligence and Society, Migration Futures, the Future of Food, and Tagata Moana, and Tangata Whenua: Hawaiki Futures.

[auckland.ac.nz/evolving-your-education](https://auckland.ac.nz/evolving-your-education)



# Dream Dare Do

## Centre for Innovation and Entrepreneurship

At CIE, we foster entrepreneurship. Join us to fine-tune your mind-set and abilities. We interweave teamwork, problem-solving, emotional resilience, flexibility, a global outlook and courage. These skills and attitudes will help you thrive in whatever career you choose.

We can prepare you for the future through practical learning. Our free extra-curricular programmes teach the skills needed to develop ideas and create ventures. We've seen many successful start-ups originate through our programmes – among them Alimetry, Kami and Parrot Analytics.

## Innovation Hubs

We have two vibrant innovation and entrepreneurship hubs where you can learn and collaborate – Kura Matahuna / Unleash Space and Te Ahi Hangarau Technology Hub. Here you can create what you can imagine, design for today, and prototype for tomorrow. We have a range of exciting tools, technology, and equipment for you to use, including 3D printers, a laser cutter, CNC router, vinyl cutters, VR, 5G-enabled technology and more.

## Our programmes

We offer a variety of extra-curricular programmes for innovators and aspiring entrepreneurs at all stages of their journey. Maybe you're interested in social innovation or business creation; perhaps you have no experience and are yet to come up with ideas; or maybe you have a venture that you're ready to launch. Whatever the case, we have many opportunities for you to get the most out of your time at University and equip yourself with the tools to unleash your potential.

[auckland.ac.nz/cie](http://auckland.ac.nz/cie)

## Velocity

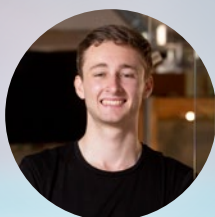
Velocity is the University of Auckland's flagship entrepreneurship programme. Participants have gone on to create world-changing ventures. You too could benefit from our mentorship, workshops, team culture – and competitions with an annual prize pool of \$100,000!

Since 2003, Velocity alumni have:

- Created more than 3,760 jobs
- Ignited more than 292 ventures
- Raised more than \$4.2 billion in capital
- Products and services in 195 countries

## The brightest star

The University of Auckland has won multiple awards for excellence in innovation and entrepreneurship education – for example, from the Global Consortium of Entrepreneurship Centres, the International Council of Small Business and Entrepreneurship, the United States Association of Small Business and Entrepreneurship, the Global Entrepreneurship Network NZ and the Accreditation Council for Entrepreneurial and Engaged Universities.



*“Through the Velocity programme, I first encountered Vend limited, a point of sale software company. I was inspired by their vision. Later a position became available ... Currently at Vend I sit across the strategy and finance teams, completing work for our offices globally.”*

**Thomas Howe, Commerce graduate**



*Dr Karen Huang is a senior lecturer in Chinese. In 2024 she received a University of Auckland award for Sustained Excellence in Teaching.*

# Great learning begins with great teachers

*“I never thought I would become a Chinese teacher. When I was a PhD student in Linguistics at the University of Hawai‘i, I began teaching Chinese to MBA students. I became fascinated and decided to pursue a career in language teaching. I joined the University of Auckland in 2013, which enabled me to combine my academic training with my enthusiasm for nurturing Asia-Pacific ties.*

*“Teaching involves more than knowledge transmission and proficiency development. A classroom is a space where students frequently interact, communicate and express emotions. This is vital to their well-being, as we witnessed during the pandemic. I care about who my students are and what they think, and my classroom allows them to express themselves. I don’t see myself as a teacher but rather a facilitator who creates learning experiences through interaction.*

*“I accommodate diverse needs through offering flexible and varied learning activities. I think assessment should be used to measure or encourage students’ growth. That’s why I design frequent mini-assignments to offer regular, detailed feedback. This encourages daily study and gradual development. These regular assessments have improved student learning significantly.*

*“And they’re fun. I like to create meaningful and fun activities to encourage students to apply what they learn. For example, I created a mini dialogue series ‘Angry Girlfriend’, which features a boyfriend who always makes his girlfriend mad. The dialogues incorporate the day’s grammar points in a light-hearted way, and students thoroughly enjoy the role-play, which develops their conversation skills.*

*“Similarly, when I introduce the social phenomenon of ‘compliment groups’ in China, where people pay to receive compliments online, we use tutorials to replicate the experience by giving each other compliments via Padlet. This allows students to experience the phenomenon, fostering a deeper understanding of its roots. Like ‘Angry Girlfriend’, the exercise creates a social context that increases engagement, as learning is enriched through human connections.*

*“As a teacher, self-assessment is as important as student assessment. I constantly reflect on myself to improve my teaching by seeking student feedback and adopting new activities from the literature or colleagues. They might not always work, but by trying, I always strive to provide a better learning environment.”*



# We're here to help you **succeed**

Do you need academic advice, guidance with university systems, or personal support? We'll help make things easy for you. We have some of the best resources on offer. We'll help you to apply and enrol, to get the most out of your time with us, and to truly fulfil your potential. [auckland.ac.nz/studentsupport](http://auckland.ac.nz/studentsupport)

## Student Hubs

The Student Hubs are your physical gateway to Waipapa Taumata Rau, University of Auckland. Our friendly staff are available to provide you with advice on any aspect of your studies and life at university.

Student Hub staff can help you with a wide range of information and services, such as:

- Exploring your study options with the University, including career pathways and postgraduate possibilities
- Understanding and navigating entry to the University, including support with your application, admission and enrolment
- Selecting courses, enrolment, degree planning and structuring your studies
- Helping and advising with fees, transcripts, and visa enquiries
- Understanding and navigating university life
- Accessing Library services and student IT support
- Accessing other support, including connection to wellbeing, disability, and engagement services

## Visit a Student Hub

If you would like to speak with someone from our friendly team, or access any of our services, drop into one of our five locations.

### Locations

#### Student Hub and Student IT Hub, City Campus

Te Herenga Mātauranga Whānui | General Library  
Building 109, 5 Alfred Street, Auckland

#### Student Hub, Grafton Campus

Te Herenga Hauora | Philson Library  
Building 503, Level 1 (entry via the Atrium, Building 505), 85 Park Rd, Grafton

#### Student Hub, Te Papa Ako o Tai Tonga

6 Osterley Way, Manukau

#### Student Hub, Te Papa Ako o Tai Tokerau

L Block, 13 Alexander Street, Whangārei

## Get in touch

If you are not in Auckland or are unable to drop by in person, you can go online, email or phone us with your enquiry.

[auckland.ac.nz/student-hubs](http://auckland.ac.nz/student-hubs)

[studentinfo@auckland.ac.nz](mailto:studentinfo@auckland.ac.nz)

Auckland: 09 923 5025

Outside Auckland: 0800 61 62 63

International: +64 9 373 7513

## Interactive Study Guide

If you prefer to do things yourself, why not test out our personalised online Study Guide. Just enter a few details about yourself, and the Guide will draw together some options just for you.

[auckland.ac.nz/guide](http://auckland.ac.nz/guide)

*Make the most of your time with us and truly fulfil your potential*

*Find out more*  
[auckland.ac.nz/studentsupport](http://auckland.ac.nz/studentsupport)

## Orientate yourself

If you're new to the University of Auckland check out our website. Find out what to think about before you arrive, what to expect at your Orientation Day, how to get around campus, life on campus and more.

[auckland.ac.nz/new-students](https://auckland.ac.nz/new-students)

### Campus Orientation

Orientation is designed to ensure you have a smooth transition to university. We'll help you feel at home here. You'll be able to meet staff from your faculty, have fun, and make friends. The day includes a Mihi Whakatau ceremony, faculty sessions, and a campus tour. There are also specific Orientation sessions for Māori, Pacific and international students.

[auckland.ac.nz/orientation](https://auckland.ac.nz/orientation)

If you're from overseas, you can attend an additional Orientation programme to help you adjust to your new home. (See pg. 24.)

Some faculties also run Orientation days.

Orientation is held at the beginning of both Semester One and Semester Two.

### Meet your UniGuide

As a new student it can be challenging to find your way around, meet new people and feel settled in University life. To make the transition easier, the UniGuide Programme connects you with a specially trained senior student. You'll meet your UniGuide on your Orientation Day. They'll be an excellent resource throughout your first semester.

[auckland.ac.nz/uniguide](https://auckland.ac.nz/uniguide)

### AUSA O'Week

Auckland University Students' Association host O'Week Festivals during Orientation Week. Go online for more information regarding O'Week events at your campus.

[ausa.org.nz](https://ausa.org.nz)

## Libraries and Learning Services

If you're working on assignments or studying for exams, you can benefit from:

- Resources and workshops to improve your academic skills
- Many study spaces and computers with email, internet access, Microsoft Office and other software
- Rich online collections, including databases, journals and electronic books
- Large collections of print, multimedia and microtext materials
- Many printers, scanners and photocopiers

[auckland.ac.nz/library](https://auckland.ac.nz/library)

### Learning Essentials

Studying at university requires a wide set of academic skills. Our online resources will help with time management, note-taking, writing, presenting, exam preparation and more.

[auckland.ac.nz/learning-essentials](https://auckland.ac.nz/learning-essentials)

You can also attend workshops offered by Libraries and Learning Services. Go online to see the workshops currently on offer.

[auckland.ac.nz/workshops](https://auckland.ac.nz/workshops)

### Career Development and Employability (CDES)

It's good to start thinking about your career early, and the CDES team is here to support you from year one.

Build your skills and confidence through our online platforms, MyCDES and MyCDES+, as well as career coaching and employability workshops with our friendly consultants. Our career expos and recruitment events will help you to connect with employers, identify opportunities, and become work ready.

You can access our free support throughout your studies and for three years after graduation.

[auckland.ac.nz/cdes](https://auckland.ac.nz/cdes)

### Student IT support

Our facilities include study spaces, computers, information resources and learning support. The Student IT Hub offers in-person and online assistance to provide all of your connectivity, technology, and software solutions throughout your academic journey.

[auckland.ac.nz/student-it-hub](https://auckland.ac.nz/student-it-hub)

### Ask us

Sometimes you'll have specific questions, such as "How do I structure a report?" or "Where can I find more information to help complete an assignment?"

We're always happy to help with queries about our collections, spaces, resources, or services. Talk with us in person at any of our locations. You can also contact us online through Ask Us.

[auckland.ac.nz/library-ask-us](https://auckland.ac.nz/library-ask-us)

## Support for student equity communities

The University offers a welcoming and safe environment. We ensure that students, staff and guests can succeed, thrive and reach their full potential. We have a range of initiatives, resources and support for students and their whānau.

[auckland.ac.nz/equity](https://auckland.ac.nz/equity)

### Students with disabilities

Ratonga Hauātanga Taura, Student Disability Services (SDS) provides support tailored to your needs. This includes advice and advocacy, study and learning adjustments, and help with digital and physical access to the University. We also have a range of resources available to students in our dedicated study spaces. Contact us early so we can best help you.

[auckland.ac.nz/disability](https://auckland.ac.nz/disability)

### Inclusive Learning

If you are neurodivergent or have a specific learning disability, we can enhance your academic development. We provide tailored support for your learning needs or may refer you to other support services.

[auckland.ac.nz/inclusive-learning](https://auckland.ac.nz/inclusive-learning)

### Support for Rainbow students

Our dedicated Rainbow Support Adviser offers a range of support that fits with your unique identity. Read more online about the Rainbow Student Network, Queerspace, faculty groups, resources, and funding for legal name changes.

[auckland.ac.nz/rainbow](https://auckland.ac.nz/rainbow)

### Students from refugee and migrant backgrounds

Find out about support, including our community of interest, scholarships, faculty contacts, and admission pathways.

[auckland.ac.nz/refugee](https://auckland.ac.nz/refugee)

### Students from constrained economic backgrounds

We offer a range of special admission programmes (pg. 34) and scholarships (pg. 109) for students from constrained economic backgrounds.

[auckland.ac.nz/constrained-economic-backgrounds](https://auckland.ac.nz/constrained-economic-backgrounds)

# Personal support

## Be Well | Student Wellbeing

The team offers a range of tools and information to care for your physical, emotional and spiritual wellbeing so you can thrive during your time at university. They also focus on proactive and preventative measures that promote health, reduce stress and enhance a sense of community and belonging, particularly through events and trainings led by our Wellbeing and Equity Student Ambassadors.

[auckland.ac.nz/be-well](https://auckland.ac.nz/be-well)

## AUSA Student Support Hub

We're here to help!

AUSA are a completely separate entity from the university. If you're having issues on-campus and need some outside support, AUSA can advocate with you or on your behalf. The Student Support team at AUSA can provide you with a range of resources. We can also help you to overcome both academic and non-academic barriers that may arise while you're studying. The team can help you with:

- Academic complaints
- Financial/hardship assistance
- Housing and tenancy queries
- Employment issues

We're located in AUSA House at 4 Alfred Street.

You can also email us or go online for more information.

[studentsupporthub@ausa.org.nz](mailto:studentsupporthub@ausa.org.nz)  
[ausa.org.nz](https://ausa.org.nz)

## University Health and Counselling Services

University Health and Counselling (UHCS) offers primary health services across multiple campuses. They have experienced General Practitioners (GPs), nurses and counsellors trained to help and support the diverse medical needs of our student population. You can enrol to get assistance with physical health (including sexual health), mental health, immunisations and much more.

[auckland.ac.nz/studenthealth](https://auckland.ac.nz/studenthealth)

## Faith and spirituality

Students of all religious and cultural beliefs are welcome at the University of Auckland, and the Ratonga Pā Whakawairua, Maclaurin Chaplaincy offers interdenominational pastoral care and spiritual guidance. Places of prayer and reflection, such as the Maclaurin Chapel, Muslim prayer spaces, and Wāhi Āio quiet spaces, are available on campus. Many groups provide fellowship for students from most major religions.

[auckland.ac.nz/spirituality](https://auckland.ac.nz/spirituality)

## Te Papa Manaaki | Campus Care

We offer a safe confidential and free service that supports the wellbeing and safety of everyone at the University.

The team works with students to better understand their concerns and needs, therefore helping to streamline interactions with campus services. We develop a tailored plan that works in the best interests of each individual. Students are assigned a single case manager who connects them with internal and external services that can support their needs. Students can be referred by others or reach out directly to seek advice.

[auckland.ac.nz/campus-care](https://auckland.ac.nz/campus-care)

## Parent support

### Early Childhood Education

If you need to juggle childcare and study, you'll be pleased to know there are three Early Childhood Centres and one Kōhanga Reo on the City and Grafton campuses. We offer places to tamariki aged three months to school age.

### Parent Spaces

The University provides dedicated facilities for parents and whānau.

[auckland.ac.nz/parentingsupport](https://auckland.ac.nz/parentingsupport)

## Financial advice

Most students have to survive on a fairly tight budget. For information about scholarships, see pg. 109.

# Support for Māori and Pacific students

## Māori students

The University welcomes and supports Māori participation and achievement in all aspects of University life. Māori student groups include Ngā Tauira Māori (NTM) University of Auckland Māori Student Association, NISSA (Nesian Indigenous Science Student Association), Te Rākau Ture (TRT) Māori Law Students' Association, South Pacific Indigenous Engineering Students (SPIES) Māori and Pacific Engineering Student Network, Te Mana Pakihi (TMP) the Business School's Māori Students' Association, Ngārehu o Te Mātauranga (NRM), the Māori and Pacific Medical and Health Students Association and Te Korowai Atawhai (TKA) – the Māori Student Association for Education and Social Work. Read more on pg. 8.

[auckland.ac.nz/maoristudents](https://auckland.ac.nz/maoristudents)

## ReoSpace at Te Tumu Herenga

ReoSpace is a safe, welcoming, inclusive space, where te Reo is centred as the primary language of communication. ReoSpace is open to all kaimahi (staff), tauira (students), and manuhiri (guests/visitors) from outside of Waipapa Taumata Rau, University of Auckland. You can be an absolute beginner through to a fluent speaker.

[auckland.ac.nz/reo-space](https://auckland.ac.nz/reo-space)

## Pacific students

Pacific student groups include the Auckland University Pacific Island Students' Association (AUPISA), Nesian Indigenous Science Student Association (NISSA), Pacific Island Law Students' Association (PILSA), Commerce 'O Pasifika (COP), the Business School's Pacific Island Students' Association, the South Pacific Indigenous Engineering Students (SPIES), Auckland Pacific Health Initiative (APHI) for Pacific students enrolled in Health related programmes, Village Arts Collective (VAA), the Arts and Global Studies Association, and Ngārehu O Te Mātauranga (NRM), the Māori and Pacific Medical and Health Students' Association. Read more on pg. 10.

[auckland.ac.nz/pacificstudents](https://auckland.ac.nz/pacificstudents)

## Libraries and Learning Services

We offer two specialist programmes:

**Te Fale Pouāwhina** supports students academically and culturally. We specialise in academic learning enhancement through workshops, wānanga and consultations. Our work is underpinned by Kaupapa Māori and Pacific principles.

[auckland.ac.nz/tfp](https://auckland.ac.nz/tfp)

**Leadership Through Learning** is a 12-week programme supporting undergraduate and postgraduate Māori and Pacific students to develop leadership and academic skills. It provides a culturally safe environment that normalises leadership and learning success.

[auckland.ac.nz/leadershipthroughlearning](https://auckland.ac.nz/leadershipthroughlearning)

# Undergraduate Targeted Admission Schemes (UTAS)

UTAS are the University's Undergraduate Targeted Admission Schemes. They are part of our commitment to providing inclusive and equitable learning opportunities.

UTAS reserves a number of places in our undergraduate programmes for applicants who have met the University Entrance standard but have not met the guaranteed entry score for the programme of their choice.

UTAS places are reserved for eligible:

- Māori applicants
- Pacific applicants
- Applicants with disabilities
- Applicants from constrained economic backgrounds
- Applicants from refugee backgrounds

[auckland.ac.nz/utas](https://auckland.ac.nz/utas)

# It's your move life on campus

It's a big step starting University, and it can seem a little overwhelming at first – finding your way around, introducing yourself to new people or finding something to do on campus. Here are some great ways to settle in quickly, make new friends and get the most from your University experience.

## Get involved

Student activities are a great way to change up your daily routines and meet new people. There are heaps of options, whether you're interested in student politics, team sports, student media or volunteer work.

[auckland.ac.nz/campuslife](http://auckland.ac.nz/campuslife)  
[facebook.com/uowatson](https://facebook.com/uowatson)

## Take your pick...

### Arts and culture

Auckland is an inspiring city, and you don't even have to leave campus to discover a world of art. Check out our galleries online.

[auckland.ac.nz/galleries](http://auckland.ac.nz/galleries)

The School of Music has a wide variety of concerts throughout the year, from classical and opera to pop and jazz. To keep up-to-date with music and art events, sign up for the mailing list online.

[auckland.ac.nz/creative](http://auckland.ac.nz/creative)

**Get the  
most from  
your university  
experience**

**Find out more**

[auckland.ac.nz/campuslife](http://auckland.ac.nz/campuslife)

### Join a club

Do you yearn for the great outdoors? Perhaps you prefer dance? Or are you keen to try photography? With more than 250 clubs on campus, there's bound to be one you're interested in!

Joining a club gives you an opportunity to meet other students with similar interests, as well as the chance to take part in events and activities on and off campus.

We also host many academic clubs and faculty student associations to enhance your studies.

Check out the Clubs Expo held during your first week of semester.

[auckland.ac.nz/clubs](http://auckland.ac.nz/clubs)

### Your UniGuide mentor

Whether you have a question about buying books, using public transport or finding a good cup of coffee, your UniGuide mentor can help.

[auckland.ac.nz/uniguide](http://auckland.ac.nz/uniguide)

### Volunteering and Leadership

Build up your work and volunteering experience during your time at the University. These roles are a great way to meet new people, get to know the city, network and develop new skills.

Throughout the year, we offer many opportunities to grow your leadership skills and work experience. Become a UniGuide, a Resident Adviser or a Social Media Content Creator. Join the AUSA buddy programme. Work as part of the UniCrew or Wellbeing and Equity Student Ambassador team. And there's more – check out the range of opportunities online.

[auckland.ac.nz/leadership-and-volunteering](http://auckland.ac.nz/leadership-and-volunteering)

### Music

Whether you're an EDM, rock or pop fan, you can take in the sounds at the free musical events in the City Campus Quad. The School of Music also produces a wide range of events during the year. Meanwhile, the student radio station 95bFM offers you a sizzling hotplate of New Zealand news, views, music and gig guides.

*“Growing up in rural Otago, I was ready to experience life in a big city, and the excitement of Auckland really appealed to me.”*

**Harriet Keown, BA graduate**



## Events

If you're into music, the arts, sport, hanging with new friends or just getting involved, we offer a vast array of opportunities to help you thrive in University life.

In past years, students have partied to Marshmello, sped to Rangitoto Island in the Great Waka Ama Race, competed in the Comedy on Campus student stand-up night, slam dunked at the Interfaculty Basketball Finals, performed at the Poetry Slam, and much more.

To stay up-to-date with what's happening, look out for the What's On e-newsletter.

### [auckland.ac.nz/events](https://auckland.ac.nz/events)

AUSA also provides a number of events such as Womensfest, Ecofest and Politics Week. Auckland offers even more events to enjoy, like the Pasifika Festival, the Lantern Festival and free outdoor summer movies.

### [aucklandnz.com](https://aucklandnz.com) [ausa.org.nz](https://ausa.org.nz)

## Shop

The Campus Store, located in the Student Quad, City Campus, sells official University merchandise so you can share your pride in being a student here.

Also located on campus are: a well-stocked convenience store, bookshop, pharmacy (with NZ Post services), and an IT retailer.

### [auckland.ac.nz/foodandretail](https://auckland.ac.nz/foodandretail)

## Cafes on campus

Whether you're lunching with friends or just grabbing a snack, there's an outlet to suit your needs. Refuelling is essential to optimise brain power. Our retailers can ensure you don't need to travel far, giving you time to enjoy the vibrant campus culture! A variety of food trucks also visit our campuses during semester. Check out the schedule online.

Don't forget to check our range of Budgie Eats options with student-friendly price tags, as well as Better Kai meals, which identify the healthier food options across campus.

### [auckland.ac.nz/foodandretail](https://auckland.ac.nz/foodandretail)

## Sights and activities

If you're new to Auckland you'll probably want to see some of the local attractions. To get a bird's eye view of the city, take a trip to the viewing deck of the SkyTower, climb one of the many dormant volcanic cones around the city or take a short ferry ride across the harbour to climb Rangitoto Island – one of Auckland's most famous landmarks.

You can take a harbour cruise or ferry ride to Devonport, Waiheke Island or any of the other scenic destinations accessible by water. Have a go at sailing or kayaking yourself.

If beaches and big waves are more your thing, head out to Piha – one of New Zealand's most popular surf destinations – or visit another of Auckland's many beaches. Auckland is also home to bushlands, including the expansive Waitākere Ranges. There you can enjoy a scenic train journey or take a walk through the native forests.

Auckland has a strong focus on the visual arts, with many galleries, including a well-established public art gallery that is just across the park from City Campus. The Auckland Museum hosts numerous permanent artworks, displays and exhibitions. The Museum's library and collections databases are excellent sources of information for study and research.

Add to this the great cafes and bars, an exciting nightlife, terrific shopping and colourful Pacific and Asian cultural influences. We're sure that you'll thoroughly enjoy your Auckland experience.

## Sport and recreation

Play sports, get fit and have fun! Whether you're keen to play sports competitively or just looking to make new friends, we have a wide range of offerings to suit you. We offer social sports leagues, interfaculty tournaments, marine sports, high-performance athlete study support, and even an Esports Arena. You can also play for New Zealand's top sporting University at the National Tertiary Championships.

The High Performance Support Programme provides eligible student-athletes and performers the support needed to manage their sporting and performance commitments while attaining a world-class degree. The programme's holistic approach to student support includes performance, wellbeing, financial support, and leadership development.

If you're looking to keep fit and healthy, you can find our brand-new Recreation Centre on our City Campus. With our affordable student membership rates, you have access to our fully equipped facility, a wide range of cardio and strength equipment, multiple group exercise studios for in-person fitness classes, sports halls, an 8-lane swimming pool, and much more. Additional services include personalised fitness consults and specialised group fitness classes such as Reformer Pilates.

### [auckland.ac.nz/sportandrec](https://auckland.ac.nz/sportandrec)

---

***“I played hockey for the Blacksticks full time during my studies. The Law School was extremely accommodating. And there's a University-wide High Performance Support Programme as well. This provided me with strong support, especially when sport and university didn't align perfectly.”***

**George Muir, Law graduate**





# New Recreation Centre

A state-of-the-art new home for Sport and Recreation and social hub for the University community

More than just a gym, more than just a sports centre, more than just a hangout space – our new Recreation Centre, which opened in late 2024, is all these things and more right in the heart of City Campus. It provides more opportunities than ever before for students, staff and the greater community to get active, support their own wellbeing, make new friends and gather together.

Our new facility was designed in consultation with students, staff and Recreation Centre members. It maximises your opportunities to play sport, keep fit and have fun whilst studying or working at Waipapa Taumata Rau, University of Auckland.



The 21,000 square metre facility includes:

- An aquatics hall with an 8-lane swimming pool, dive well, spa pool and sauna
- A rooftop with panoramic city and harbour views, featuring multi-sport turf as well as track, workout and hangout zones
- A gym with large cardio and weights zones
- Two sports halls, including one with a glass floor and LED markings for easy multi-sport usage
- A bouldering wall
- Squash courts
- Numerous large group-exercise studios
- Specialised group-exercise studios, including a combat sports studio
- Thoughtfully-designed “chill” spaces
- A café and retail outlet
- Indoor and outdoor multi-purpose event spaces

For more information on memberships and facilities, visit our Sport and Rec portal. [auckland.ac.nz/sport-and-rec](http://auckland.ac.nz/sport-and-rec)



# Are you an international student?

We're certain that you'll love New Zealand. It's one of the safest and most beautiful countries in the world, and Auckland is ranked internationally as one of the best cities for quality of living (amongst the Top 10 in the Global Liveability Index 2024 [compiled by the Economist Intelligence Unit]).

## Orientation

At the start of each semester, new international students are encouraged to take part in Orientation. Our activities and events will help you adjust to your new home and experience Kiwi culture. We'll also pair you up with a UniGuide or an AUSA Buddy – an experienced fellow student who will help you settle into University life.

To attend Orientation, you should arrive in Auckland at least one week before the semester starts. During this week you'll have time to enjoy social activities and cultural events. You can also make any last-minute changes to your courses and pick up your Campus Card.

## English language enrichment

DELNA (Diagnostic English Language Needs Assessment) is a free service that helps you improve your English language skills. DELNA identifies your language needs and guides you to the most appropriate English language enrichment resources.

[auckland.ac.nz/delna](https://auckland.ac.nz/delna)

English Language Enrichment (ELE) provides opportunities to develop your academic communication skills through on campus and online workshops and individual consultations. Once on campus, you can join language learning groups, participate in writing in English workshops, meet individually with a language adviser, and find language exchange partners. You can also access language learning materials and tools to help improve your academic English through ELE Online.

[auckland.ac.nz/ele](https://auckland.ac.nz/ele)

The Faculty of Arts offers Academic English Studies courses to help improve your academic writing, reading, speaking – and success in other university courses.

[auckland.ac.nz/arts-aes](https://auckland.ac.nz/arts-aes)

The University of Auckland English Language Academy provides pre-university English language programmes, including Academic English and General English. We offer pathway programmes for students who don't meet the English language requirements. See pg. 107.

[auckland.ac.nz/ela](https://auckland.ac.nz/ela)

## University life

Getting involved in clubs, societies and events on campus is a great way to make new friends. The University regularly puts on social events for students, such as sports tournaments, movie nights and concerts.

There are over 200 student clubs and societies, ranging from international cultural groups to clubs for hiking, skiing, film and yoga. Attend the Clubs Expo at the start of each semester to meet club members and find out more.

[auckland.ac.nz/campuslife](https://auckland.ac.nz/campuslife)

## Support for international students

If you need to talk to someone about problems or difficulties, or just want advice about something, you can reach out to one of the multiple support services on campus. You can also find a number of international student resources on our website.

[auckland.ac.nz/international-student-support](https://auckland.ac.nz/international-student-support)



## Keen to find out more?

Questions: [askauckland.ac.nz](mailto:askauckland.ac.nz)

Email: [int-questions@auckland.ac.nz](mailto:int-questions@auckland.ac.nz)

Web: [auckland.ac.nz/international](https://auckland.ac.nz/international)





**No.1** for  
Employability\*

\*QS Graduate Employability Outcomes 2025, number one in NZ



**360**  
International

# Take yourself **global.**

## **360 International: exchange / global learning / international internships**

Deepen your personal skills, expand your academic potential and enhance your employability through one of our international learning opportunities. 360 International offers semester-long exchanges, summer/winter schools, international network programmes, global internships and more.\*

### Semester exchange

A semester or year-long exchange gives you the opportunity to earn credit towards your University of Auckland degree while attending courses at one of our esteemed partner institutions. We offer more than 130 destinations to choose from.

[auckland.ac.nz/semesterexchange](http://auckland.ac.nz/semesterexchange)

### Summer + winter schools

These one-to-eight-week programmes take place in dozens of destinations, mostly during our semester breaks. We offer summer and winter schools, research placements and leadership programmes through our international networks of university partners.

Recent destinations include the University of New Caledonia, University of Alberta, Tecnológico de Monterrey, and Seoul National University.

[auckland.ac.nz/summerwinterschools](http://auckland.ac.nz/summerwinterschools)

### Global internships

These two-to-twelve-week opportunities are generally offered during our summer break, including options for either remote or in-country experiences. We offer individual and group-funded programmes. Recent destinations include Medellin, Colombia; Bangkok, Thailand; Mumbai, India; Shenzhen, China; and Ho Chi Minh City, Vietnam.

[auckland.ac.nz/globalinternships](http://auckland.ac.nz/globalinternships)

\* The University of Auckland reserves the right to suspend or cancel University student travel activities in response to health and safety concerns abroad. 360 International also supports a range of virtual international learning opportunities, in addition to overseas experiences.



## Semester Exchange

“Going to UCI was the adventure of a lifetime! There’s a really high standard of teaching. Living at International House with other exchange students, I met so many cool people from around the world, who I never would’ve met were it not for this exchange.”

**Anthony Pita**

*Semester exchange at University of California Irvine, United States*



## Summer + winter schools

“It was truly eye-opening to see and hear the different perspectives of the students we met – we felt we were all learning from each other. The exchange of knowledge is crucial as a global citizen and is a reminder of the privilege we all carry to share our stories with one another.”

**Simone Lenora**

*Intercultural Approaches to Public Health at UC Chile*

*Prime Minister’s Scholarship for Latin America*



## Global internships

“I was drawn to Thailand as their culture revolves around collectivism, same as Māori. As a takatāpui/LGBTQIA+, neurodiverse person, I was paired with an innovation-based non-profit focusing on empowering queer communities in humanitarian areas. I have never felt more welcomed by a company.”

**Danya Pavlovich, Ngāti Hine**

*Global Internship in Thailand*



We have  
120+ partners  
in 30+ countries.  
There are many  
scholarships and  
funding options

**Find out more**

Start your journey at  
[auckland.ac.nz/360](http://auckland.ac.nz/360)

# Which campus is for you?

You could be studying exclusively at our City Campus or, depending on your area of study, you might do all or part of your study at one of our other campuses. Check out what each offers and start picturing yourself there.

## Centre yourself in the City

Covering over 20 hectares of land, the City Campus is the main site of the University of Auckland. We provide a full range of amenities and student support, including cafes, health services, libraries, childcare facilities and a recreation centre. (See pg. 21–23.)

Located just five minutes from Auckland's bustling central business district, City Campus is conveniently linked to all transport services.

You can take a tour of the City Campus with a student guide. Call 0800 61 62 63.

## Keep your finger on the pulse in Grafton

The Faculty of Medical and Health Sciences is situated opposite Auckland's largest hospital, on the doorstep of the Auckland Domain.

Grafton Campus provides state-of-the-art facilities, including modern teaching and study areas to meet the future needs of the faculty.

You can also access a range of free clinics. Services include comprehensive eye health checks, nutrition and dietetics, hearing and tinnitus and speech and language therapy.

The campus is located on the Central Transit Corridor. There is an excellent bus service, and the Grafton train station and Newmarket shopping precinct are only minutes away.

## Renew yourself in Newmarket

Newmarket Campus joined the City and Grafton Campuses in 2015 to create an integrated cluster in central Auckland. At present Newmarket Campus is mainly for research, postgraduate studies and industry outreach activities. The site covers five hectares near Newmarket's main business area. It will provide the University with a site for expansion over the next 50 years.

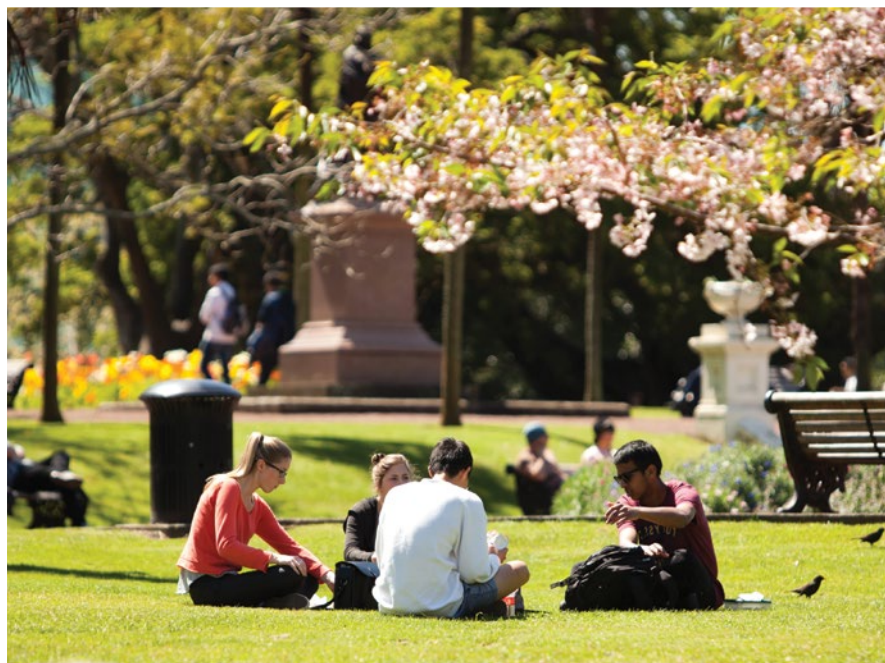
The faculties of Engineering and Science occupy the first of the new facilities. These include the Health and Rehabilitation Clinic and the Department of Exercise Sciences. We're also home to engineering research groups such as the Creative Design and Additive Manufacturing Lab, the Structures Testing Laboratory, and the Wind, Water and Composite Materials Labs.

## Transform at Tai Tokerau

Located in the heart of Whangārei, the Tai Tokerau Campus offers a variety of programmes within a close-knit community. We also provide postgraduate opportunities and support.

## Succeed in South Auckland

Te Papa Ako o Tai Tonga continues our commitment to high-quality, local education for South and East Aucklanders. We offer a range of programmes, and all University of Auckland students can use the study spaces and support services.





# We'll help you find accommodation

The place you call home is central to a happy life at the University of Auckland. We understand that you might feel nervous about finding somewhere to live. So here's how we can help.

We're confident we can find you somewhere welcoming, comfortable, fun and safe – from catered Halls of Residence to self-catered flats, studios and single rooms.

Our *kainoho*, residents are supported by a Resident Manager, Resident Coordinators and teams of Resident Advisers. We want you to enjoy all the fun of hall life – whilst also benefitting from a quiet lifestyle when study is your priority.

Living with us is convenient and fun, all you have to bring is yourself. Learn more about the financial, academic and social benefits online. [auckland.ac.nz/why-live-with-us](https://auckland.ac.nz/why-live-with-us)

## Catered accommodation

In our catered halls, your Accommodation fees go a long way! They cover your room, meals, access to University recreation facilities, and utilities such as water, electricity and laundry. You also get access to University WiFi while in your hall.

Breakfast, lunch and dinner are served every day of the week, including the weekend. In addition to meat, vegetarian, vegan and halal options, we also cater to students with special dietary needs such as dairy- or gluten-free food. Packed lunches and late dinners are available at all our catered halls on request.

In all halls, the facilities include one or more communal lounges, a games room, solo and group study rooms, one or more TV lounges and a music room. We organise social and recreational events throughout the year, as well as academic mentoring and informal study groups.

### Grafton Hall

Nestled within the city fringe, Grafton Hall offers modern facilities, including spacious dining and social spaces as well as large single bedrooms. This hall is close to the Grafton and Newmarket Campuses, and only a short walk from City Campus. Grafton Hall is home to our *Tauira Māori* community. [auckland.ac.nz/grafthonhall](https://auckland.ac.nz/grafthonhall)

### O'Rorke Hall

O'Rorke's unique layout is configured as pods of four to seven single bedrooms, each sharing a bathroom. In addition to a communal lounge on every floor, you can also enjoy the flood-lit basketball court, games room and BBQ patio. O'Rorke is just five minutes from the City Campus.

In addition, O'Rorke hosts *Rainbow pods* and a *Pasifika* floor for students who want to live with members of their own community. [auckland.ac.nz/ororkehall](https://auckland.ac.nz/ororkehall)

### University Hall Towers

With comfortably furnished single rooms throughout a modern dual-tower complex, University Hall Towers also offers ample study spaces, social lounges and an astro-turf half court. Just five minutes from the City Campus, this residence is right next to the Elam School of Fine Arts. [auckland.ac.nz/unihalltowers](https://auckland.ac.nz/unihalltowers)

### Waipārūrū Hall

Located just ten minutes from City Campus, our newest and largest residence, *Waipārūrū*, is the first of our halls to offer flexible dining times and a variety of cuisines from multiple food stations. Spread across two towers, *Waipārūrū* Hall has

a great range of study and social spaces, plus music and games rooms for residents to enjoy. [auckland.ac.nz/waiparuruhall](https://auckland.ac.nz/waiparuruhall)

## Self-catered accommodation

We offer comfortably furnished rooms in an independent environment. You're responsible for cooking your own meals, but your Accommodation fees cover laundry costs, water, electricity and recreation facilities. You also get access to University WiFi while in your residence. Our Accommodation teams provide personal support throughout your stay and arrange social and recreational activities during the year. Resident Advisers are also available to help link you with University services and to host events for the whole community to enjoy.

### 55 Symonds

This modern residence provides comfortable, air-conditioned deluxe and deluxe double studio apartments, each with a galley kitchenette and ensuite bathroom. You can also enjoy a large communal kitchen, games room, outdoor area and other social spaces – all just 5 minutes from the City Campus. Postgraduate students will be given priority for 55 Symonds. [auckland.ac.nz/55symonds](https://auckland.ac.nz/55symonds)

### Carlaw Park Student Village

Next to the Auckland Domain and only a short walk from the City Campus, Carlaw Park offers single rooms in shared two- to six-bedroom apartments. Every apartment has a furnished lounge and kitchen, and communal facilities include a lounge area, games room, TV area, and study spaces.

Students interested in flatting with friends can apply to this residence via group applications. Two-bedroom apartments are reserved for students with families.

[auckland.ac.nz/carlawpark](http://auckland.ac.nz/carlawpark)

### Stuart McCutcheon House

This newest and largest Self-Catered Residence is a modern apartment complex offering three- to six-bedroom apartments, which include a furnished lounge and kitchen. Additionally, Stuart McCutcheon House offers a large outdoor courtyard, common areas, study rooms, a games room, laundries and more.

Students interested in flatting with friends can apply to this residence via group applications.

[auckland.ac.nz/smh](http://auckland.ac.nz/smh)

### Grafton Student Flats

Located close to the Grafton and Newmarket Campuses, we're a small community of 25 residents in single rooms within a large, furnished villa. Optional meal plans are available, from the neighbouring Grafton Hall. First-year school-leavers will be given priority for Grafton Student Flats.

[auckland.ac.nz/grafonstudentflats](http://auckland.ac.nz/grafonstudentflats)

### Te Tirohanga o te Tōangaroa

Located less than 5 minutes from the centre of campus, this residence offers a new style of affordable student accommodation, with single rooms designed to maximise storage space. Te Tirohanga has generous social and academic spaces, modern shared kitchens and dining – and a sky deck with panoramic harbour views.

[auckland.ac.nz/tetirohangaotetoangaroa](http://auckland.ac.nz/tetirohangaotetoangaroa)

## Accommodation for students with disabilities

Accommodation is available for those with accessibility needs. Some of our residences provide facilities such as wheelchair access and specially fitted bathrooms. Guide dogs can be accommodated. Note that some residences are slightly uphill from the City Campus. Please provide all relevant details of your needs on your application and reach out to our staff to discuss the accommodation options most suitable for you. Email us any time.

[auckland.ac.nz/accommodation](http://auckland.ac.nz/accommodation)

## Application dates

Applications open on 1 August 2025 for Semester One and the full academic year 2026; and on 1 April 2026 for Semester Two 2026.

Although there is no closing date for applications, we strongly recommend that you apply by 30 September 2025 to ensure your application is included in the selections for a first offer, made in early October. After first offers, more places become available following withdrawals.

If you require a student visa, and are not part of a recognised study abroad or exchange programme, you will need to agree to our withdrawal policies to be considered without submitting a student visa with your application.



## Keen to find out more?

Contact Accommodation Solutions:  
Office 291A, Level 2, Kate Edger Information Commons, City Campus  
Email: [acom@auckland.ac.nz](mailto:acom@auckland.ac.nz)  
Web: [auckland.ac.nz/accommodation](http://auckland.ac.nz/accommodation)  
[facebook.com/uoa.accommodation](https://facebook.com/uoa.accommodation)  
[instagram.com/uoa.accommodation/](https://instagram.com/uoa.accommodation/)







# Study Options

Connect with  
us now

 [youtube.com/UniofAuckland](https://www.youtube.com/UniofAuckland)

 [@universityofauckland](https://www.instagram.com/universityofauckland)

 [facebook.com/UniofAkl](https://www.facebook.com/UniofAkl)

02	Preparation programmes	34
	How degree programmes are structured	37
	Architecture	38
	Arts	40
	Commerce	44
	Communication	46
	Dance Studies	48
	Design	50
	Education/Teaching	52
	Education (TESOL)	56
	Engineering	58
	Fine Arts	60
	Global Studies	62
	Health Sciences	64
	Law	68
	Medical Imaging	70
	Medicine	72
	Music	76
	Nursing	78
	Optometry and Vision Science	80
	Pharmacy	82
	Property	84
	Science	86
	Social Justice Studies	90
	Sport, Health and Physical Education	92
	Urban Planning	94
	Double your options with a conjoint programme	96

# Preparation programmes

If your final school results weren't what you'd hoped, there are still options for study at the University of Auckland. Please note that the New Start, Tertiary Foundation Certificate and UniBound programmes aren't available to international students. Refer to pg. 119 for similar programmes for international students.

## He Pūaotanga New Start

He Pūaotanga | New Start will help you develop the confidence and skills for studying at University. You must be 20 years or over, be a New Zealand citizen or permanent resident, and have a good command of English. New Start is a realistic introduction to first-year study. These part-time courses prepare you for a range of undergraduate study options at the University of Auckland.

- NSGEN 47 New Start General will prepare you for an undergraduate degree in Arts, Business, Communication, Education and Social Work or Law.
- NSMAT 14 Mathematics Preparation for University, together with NSGEN 47 New Start General, will prepare you for an undergraduate degree in Commerce or Property. Both courses are compulsory for those who plan to gain admission from New Start to the Business School.
- NSMAT 10 Mathematics Fundamentals is a refresher course designed to build your confidence and skills for NSMAT 14 Mathematics Preparation for University.
- If applying for NSMAT courses, you will be required to sit a short assessment. Results from this assessment will be used to determine which course will suit your learning needs.

New Start students are not eligible for StudyLink funding. If you're experiencing financial hardship, please apply for a New Start award.

[newstart@auckland.ac.nz](mailto:newstart@auckland.ac.nz)  
[auckland.ac.nz/newstart](http://auckland.ac.nz/newstart)

## He Ara Takatū Tertiary Foundation Certificate (TFC)

We equip you with skills and confidence to succeed in undergraduate studies at university. This one-year foundation programme is available at our City, Tai Tonga and Tai Tokerau campuses. As a University of Auckland student, you'll have full access to all campus services and facilities. Depending on your subjects and grades, a completed TFC offers a guaranteed path to all direct-entry undergraduate degrees.

### Study options

To complete TFC, you must pass eight papers, including core courses in literacy and maths, as well as a range of elective subjects in Arts, Commerce, Education, and Sciences.

If you gain a GPA of 7 or above in your first semester of full-time study, you may be able to take an approved Stage I undergraduate course in your next semester. This course will be credited to both the TFC and your future degree.

### Post-TFC degree pathways

#### Arts, Humanities, Education, Social Work, Sport and Creative Arts

- Bachelor of Arts (BA)
- Bachelor of Communication (BC)
- Bachelor of Education (BEd)
- Bachelor of Global Studies (BGlobalSt)
- Bachelor of Music (BMus)
- Other degrees include BDanceSt, BFA, BSJS, BSportHPE

#### Business School

- Bachelor of Commerce (BCom)
- Bachelor of Property (BProp)

#### Engineering

- Bachelor of Engineering (Honours) (BE(Hons))

- Bachelor of Architectural Studies (BAS)
- Bachelor of Design (BDes)
- Bachelor of Urban Planning (Honours) (BUrbPlan(Hons))

#### Law

- Bachelor of Laws Part I

#### Medical and Health Sciences

- Bachelor of Health Sciences (BHSc)
- Bachelor of Nursing (BNurs)

#### Science

- Bachelor of Science (BSc)

You may also be able to enrol in conjoint degree programmes depending on your subjects and grades.

Note: There is no direct entry into BOptom, BPharm, BMedImag(Hons) and MBChB; you can apply for these after your first year.

### The application process

To be eligible to apply for TFC you must

- Be a New Zealand citizen or permanent resident
- Have completed Year 13 or been out of school for at least one calendar year after Year 12 (if under 20 years old)

All applicants must complete an online skills check in English and Maths. You may then be invited to a TFC kōrero to discuss your pathway and course preferences. If required, you'll be invited to sit an in-person diagnostic assessment to gain a better understanding of your current skills. Although the assessment results are not all that we consider, they're an important factor.

### Fees

TFC is a free (zero fees) programme; you may also be eligible to apply for a Student Allowance or Student Loan living costs. Please be aware that your TFC year will count in your StudyLink history.

[tfc@auckland.ac.nz](mailto:tfc@auckland.ac.nz)  
[auckland.ac.nz/tfc](http://auckland.ac.nz/tfc)



# Preparation programmes cont.

## Tōia ki Waipapa

Tōia ki Waipapa is for all Māori school leavers who could benefit from a preparation programme that introduces them to the University of Auckland and its facilities. See pg. 9 or for full details. [auckland.ac.nz/tkw](https://auckland.ac.nz/tkw)

## UniBound Summer

The UniBound programme is for all indigenous Pacific school leavers who could benefit from a preparation programme that introduces them to the University of Auckland and its facilities. See pg. 11 for full details. [auckland.ac.nz/unibound](https://auckland.ac.nz/unibound)

## Summer Start

If you're a school leaver who wants a head start with your first-year studies, Summer Start could be the perfect option. Not only will you earn credits towards your degree, but you'll also enjoy a lot of support throughout. Summer Start is a six-week programme. It's designed to help you transition to uni with confidence. You can set yourself up for success in your first year by experiencing all the ins and outs of uni life, from tutorials to exams and everything in between. So make the most of your summer – and have a lot of fun along the way!

[auckland.ac.nz/summerstart](https://auckland.ac.nz/summerstart)

## Hikitia Te Ora – Certificate in Health Sciences

See pg. 66.



# How degree programmes are structured

Many programmes require you to select from a wide range of courses, giving you flexibility in your study choices. Some are more prescribed, with core courses to ensure you acquire essential knowledge.

## Points per degree

Your degree programme will probably consist of 120 points of full-time study per academic year. For example, a three-year degree involves 360 points of study, whereas a four-year degree involves 480 points. You can easily see the number of points per degree in the quick facts section on each of the following programme pages. Points are achieved when you pass a course.

Most full-time students will complete eight courses in an academic year, although this number can vary.

Programmes are divided into “years”, also known as “parts” or “stages”.

## Majors and specialisations

During the course of your studies, you may be required to choose a specialisation or major. The associated courses will become a large proportion of your degree programme as you progress.

## Academic integrity requirement

We require all students admitted to the University of Auckland for the first time to complete the Academic Integrity course in their first semester.

[auckland.ac.nz/academic-integrity-course](https://auckland.ac.nz/academic-integrity-course)

## Waipapa Taumata Rau (WTR)

The Waipapa Taumata Rau course focuses on core knowledge relevant to your faculty, the significance of place-based knowledge, and Te Tiriti o Waitangi. You will develop foundational critical and ethical thinking, communication, and collaborative skills essential for success in your undergraduate study and the workforce. All programmes include a Waipapa Taumata Rau core course that should be completed in your first year.

[auckland.ac.nz/WTR-course](https://auckland.ac.nz/WTR-course)

## What you will be studying: The general structure of undergraduate programmes

### In your first year, you will probably:

- Enrol in eight courses: four courses in Semester One and four in Semester Two
- Include courses related to your chosen major or specialisation, if known at that point, as well as core courses that may apply, for example, WTR

### In your second year and beyond, you will probably:

- Enrol in a range of more advanced courses relating to your major or specialisation, as well as additional core courses and options from your programme to add depth to your knowledge

### In your final year, you will:

- Complete the requirements of your major or specialisation.
- Many programmes include a “capstone course” in which you integrate, apply and showcase the knowledge and skills you’ve acquired over the course of your degree.
- Complete any other courses/requirements in your degree regulations

*“I loved that the Bachelor of Architectural Studies was so focused on hands-on learning. I had incredibly insightful and passionate lecturers and tutors who constantly inspired me to find new ways of seeing and sensing. I was always encouraged to learn through experimentation and alternative modes of exploration.”*

*“University was great for honing my design methodologies and presentation skills. It taught me the importance of curating and editing my ideas. In my fourth year of study, I had the opportunity to intern at Jasmax and get a taste of working in an architectural practice. I immediately loved the atmosphere and was inspired by their buildings. I am now lucky to work there as an Architectural Graduate and member of Waka Māia, Jasmax’s Māori cultural design and advisory team.”*

*“Every day, I learn from experienced and emerging Māori design leaders and advocate for Māori-influenced design. I love being a part of collaborative processes where we can imbue design with meaning.”*

*“Architecture is such a broad area of study, so it continues to excite and surprise. It will equip you with numerous skills and learnings that can lead to many different career paths. Working in this field presents many opportunities to create change in the built environment and inform the way we interact, socialise and build identity through space making.”*

## **Danielle Koni**

Ngāpuhi, Te Arawa

Graduate: Bachelor of Architectural Studies, Master of Architecture (Professional)

Associate | Architectural Graduate and Tāura Whaihanga Emerging Māori Design Leader at Jasmax



# Hoahoa Whare Architecture

Te Pare School of Architecture and Planning is New Zealand's leading educator in architecture and the built environment.<sup>1</sup> Today's architects work in a rapidly expanding domain with constantly shifting boundaries. We offer degree programmes that reflect these evolving requirements and ensure you are well-equipped to begin a rewarding career, be that in architecture or in a broad range of other design-based roles.

## Quick facts – BAS

**Full-time:** 3 years

**Points per degree:** 360

**Taught at:** City Campus

**Application closing date:**  
8 December 2025

**Classes start:** 2 March 2026

## Why study with us

- Exciting studio sessions, real-world case studies, and intriguing future-speculation projects will boost your creative development.
- Research-based teaching, combined with leading edge technology, will invigorate your learning.
- Vibrant networking with practising architects will enrich your studies and build valuable contacts.
- Opportunities for overseas study and internships will expand your choices.

## Programme highlights

The BAS offers a thorough introduction to architecture and related aspects of design. It's a prerequisite degree for entry into one of our Master of Architecture (Professional) programmes, which help you work towards your registration as a professional architect.<sup>2</sup>

Undergraduate study with us reflects professional life. You'll undertake a stimulating and challenging variety of design projects in studio settings.

You'll also gain from core courses in architectural media, the history of architecture and urbanism, architectural technology, environmental design and professional studies.

All programmes include a Waipapa Taumata Rau core course, which should be completed in your first year. It focuses on core knowledge relevant to our faculty, the significance of place-based knowledge, and Te Tiriti o Waitangi.

[auckland.ac.nz/wtr-course](https://auckland.ac.nz/wtr-course)

## Choose your career

Once you've completed a recognised qualification, such as the Master of Architecture (Professional), you can work in practice. Later you can specialise in an aspect of the field that interests you, for instance, design, technology or heritage conservation.

While each country has specific accreditation requirements, New Zealand-qualified architects find international employment with relative ease in Australia, Asia, the United States or Europe.

## Interested in further study?

Bachelor of Architectural Studies graduates can choose from a variety of pathways for further study. To become a registered architect, you must complete an accredited masters programme.<sup>2</sup> The University offers three options, any of which is a pathway to the PhD.

## How do I apply?

Scan the QR code or follow the link below to find out how to apply and prepare your application portfolio.

[auckland.ac.nz/bas](https://auckland.ac.nz/bas)



<sup>1</sup>QS World University Rankings by Subject 2024

<sup>2</sup>Our masters degrees are fully accredited and are recognised by the New Zealand Registered Architects Board (NZRAB), the Architects Accreditation Council of Australia (AACA) and the Commonwealth Association of Architects (CAA) for the purposes of applying for registration as a professional architect.

**Find out more**  
[auckland.ac.nz/bas](https://auckland.ac.nz/bas)

# Kura Tangata

## Arts

A Bachelor of Arts (BA) enables you to articulate and explore your passions. You will develop these passions into career pathways that will inspire you throughout your life.

### Quick facts – BA

**Full-time:** 3 years

**Points per degree:** 360

**Taught at:** City Campus

**Majors:** Pick from more than 30 majors

**Application closing date:**

8 December 2025 (Late applications will be considered if places are available.)

**Classes start:**

Semester One: 2 March 2026

Semester Two: 20 July 2026

**Conjoint combinations:**

Commerce, Communication, Design, Engineering (Honours), Fine Arts, Global Studies, Health Sciences, Law, Music, Science

### Why study with us

- We're ranked number 1 for Arts and Humanities in New Zealand.\*
- We help you to understand the world so you can shape it for the better.
- We offer subjects you're passionate about and that will keep you focused throughout your degree.
- You will develop skills that open up diverse career opportunities.
- You will further boost your job prospects with our Career courses and internship programme.
- Our mentoring programmes provide support and community as you progress from school to university.

### Programme highlights

Your new skills in communication and critical thinking will prepare you for the fast-changing world of work.

Your majors will broaden and deepen your knowledge and skills.

You can explore your passions with a BA – you don't need to have studied a subject at school. Your first year offers variety and enables you to hone your interests.

All programmes include a Waipapa Taumata Rau core course, which should be completed in your first year. It focuses on core knowledge relevant to our faculty, the significance of place-based knowledge, and Te Tiriti o Waitangi.

[auckland.ac.nz/wtr-course](http://auckland.ac.nz/wtr-course)

### Picking your majors

We have a variety of majors to choose from. You could pair a language with a humanities subject or study Indigenous perspectives alongside a subject in social science.

Some of our most popular majors include Asian Studies, Criminology, Communication, History, Māori Studies, Media and Screen Studies, and Sociology.

#### Asian studies

Discover the diverse cultures of Asia, both past and present. You can acquire a broad and deep knowledge of Asia by studying its media, history, society, popular culture, religion and politics. A knowledge of Asian languages is not required.

#### Criminology

Focus on both the causes of crime and the different ways in which societies respond to deviance. You can consider topics including restorative justice, cybercrime, penology, gender, policing, prisons, cultural criminology, justice policies, victimology, and Indigenous criminology.

#### Communication

The media sells us everything from toothpaste to politicians. Communication technologies, such as television and TikTok, can bring us together or tear us apart. In Communication, you can explore ideas and develop skills to navigate our digitally mediated world – and shape its future. Learn how online journalism, surveillance, advertising, games, algorithms, platforms, and persuasive technologies of all kinds are transforming our industries, leisure, politics, identities, and interpersonal relationships. See page 46 for information about the separate Bachelor of Communication.

#### History

Explore many dimensions of human experience and understand how the past has formed the present. By developing your understanding of history, you will gain sought-after skills and discover how you can shape your future and our world.

*Give your future more possibilities. Be adaptable with a BA*

**Find out more**  
[auckland.ac.nz/ba](http://auckland.ac.nz/ba)

\*QS World Rankings by Subject 2024





*“I chose to study at the University of Auckland to pay homage to those who have sacrificed a lot to get me to where I am today. It is important to recognise that I not only have my aspirations, but I also carry the dreams of my family who moved across the Pacific Ocean in search of a better life.”*

*“Representation is such an important aspect of academia, and it is amazing to have an entire school (Te Wānanga o Waipapa) dedicated to preserving and sharing Indigenous knowledge. By learning how to better understand myself, I can use that knowledge to create positive changes in the community.”*

*“My current majors, Sociology and Pacific Studies, go very well together because they are skilled disciplines that highlight both Western and Indigenous knowledges respectively. I believe that analysing both of these knowledge systems can help me to understand society more effectively, especially in Aotearoa New Zealand.”*

*“I’ve always wanted to pursue a career in social development, particularly in Pacific communities in Aotearoa New Zealand. I would like to work in a position at a government organisation where I could advise on how policies can affect the wellbeing of Pacific peoples in our community. And I would like to further study the complexities of Pacific queer identities in the diaspora.”*

*“It’s okay to be unsure about the future. Not everyone has a set plan, and many different factors can influence how your pathway will go. I would advise everyone to embrace the unknown and to take advantage of the many opportunities available to you at the University of Auckland.”*

## **Joseph Meredith**

**Student: Bachelor of Arts, majoring in Pacific Studies and Sociology**



### Māori Studies

Celebrate the language, history, culture, and performing arts of te ao Māori. You can study Māori language from beginner to advanced level, and develop your knowledge of issues affecting Māori and other Indigenous peoples. You can also study: Māori histories, politics, kaitiakitanga, mātauranga, incarceration, decarceration, kapa haka, Indigenous justice, Māori media, psychologies, policy, and research methodologies.

### Media and Screen Studies

Explore the significance of media in our everyday lives. Examine texts, contexts, technologies and industries across many forms of media, including film, television, social media, popular music, visual culture, comics and video games. We combine a passion for genres, such as horror, action and documentary, with a commitment to vital issues including, gender, race, and environmental justice.

### Sociology

Analyse the society in which we live. You can study how we are affected by society, reflect on our place in it, and consider the ways in which it is changing. In addition to learning traditional sociological theory and methods, you will have the opportunity to develop deeper knowledge of specific areas, such as the environment, ethnicity, family, and public policy.

Explore all our majors online.

[auckland.ac.nz/arts-subjects-courses](http://auckland.ac.nz/arts-subjects-courses)

## Choose your career

Arts graduates pursue diverse careers. They are journalists, policymakers, social advocates, leaders and entrepreneurs. They are in roles across government, the tech industry, galleries, museums, and the charity sector. Our graduates are sought after and valued. They're working to create a better future for us all.

As an Arts graduate you'll be ready for all sorts of jobs that need analytical thinking, problem-solving, good communication and understanding of people. Check out the different industries our graduates have gone into – they could be your future career:

**Advertising and marketing:** Promote products and services through campaign planning, data analysis, and creative ideas.

**Archaeology:** Preserve physical history by working with cultural materials and at heritage sites.

**Business and management:** Support businesses in roles that require relationship skills and strategic thinking.

**Communications and publicity:** Enhance the reputation of organisations by managing their public media.

**Human services:** Work with people and communities to promote wellbeing, health, and positive change.

**International development:** Address global issues like poverty, human rights, and security.

**Media:** Work in journalism, news, social media or entertainment.

**Museums and cultural heritage:** Manage collections, programmes, events, galleries, exhibitions and research centres.

**Policy and government:** Support local, central and international governments through research and policy advice.

Discover how your career *Starts with Arts*.

[auckland.ac.nz/arts/graduate-careers](http://auckland.ac.nz/arts/graduate-careers)

## Pathways to your career

Start your career journey while you're still studying.

**Career courses:** Our Career courses could be a highlight of your degree. They can connect you with the workforce and prepare you for the professional environment.

**Arts Internship programme:** Our third-year work experience course offers internship opportunities in professional industries, including business, communications, marketing, media, and research.

## Interested in further study?

After your BA you can go further with our postgraduate programmes. If you're after an industry-focused qualification, wish to get ahead in your career, or want to keep researching a subject you love, then we have something just right for you.

For instance, you could dive deeper into:

- Creative Writing
- Conflict and Terrorism Studies
- Indigenous Studies
- Communication
- Public Policy

# Tauhokohoko Commerce

Here's a great chance to upskill in communication, teamwork, and leadership – while bolstering your understanding of global business. The Bachelor of Commerce (BCom) offers a world of possibilities through a wide range of majors. Get future-ready and work-ready with innovative courses, immersive learning, and state-of-the-art technology. This is the best possible start for a career in your chosen field.

## Quick facts – BCom

**Full-time:** 3 years

**Points per degree:** 360

**Taught at:** City Campus

**Majors:** 12 different majors

**Application closing date:** 8 December 2025

**Classes start:** 2 March 2026

### Conjoint combinations:

Arts, Design, Engineering (Honours), Global Studies, Health Sciences, Law (including Honours), Music, Property, Science, Sport, Health and Physical Education

## Majors

You can study for a single or double major. (A double major is strongly recommended.)

Accounting
Business Analytics
Commercial Law
Economics
Finance
Information Systems
Innovation and Entrepreneurship
International Business
Management
Marketing
Operations and Supply Chain Management
Taxation

You are encouraged to complete a double major to gain additional breadth and enhance career options.

## Choose your career

The BCom leads to a variety of professional positions, including: financial analyst, digital marketing manager, supply chain consultant, tax adviser, trade policy analyst and web applications developer.

For information about career options, including pathways to becoming a chartered accountant, please refer to the Business School website.

[auckland.ac.nz/business-careers](https://auckland.ac.nz/business-careers)

## Other pathways into the programme

If you're over 20 and don't have an entrance qualification but would like to study Commerce, you can enrol in the New Start programme (pg. 34).

Other pathways include our Undergraduate Targeted Admissions Scheme and Te Ara Tapatahi Hala Ki Mua | Curated Pathway. For more details, see our web pages.

[auckland.ac.nz/business-maori-pacific](https://auckland.ac.nz/business-maori-pacific)

## Interested in further study?

There is a range of excellent opportunities for you to progress to postgraduate study and research. These include the Master of Commerce, a range of professional masters degrees and the Doctor of Philosophy (PhD).

## Business Navigators

The Business Navigators programme offers an enhanced BCom experience for motivated students. It features customised core courses, extracurricular activities and community-building opportunities. For more details, visit [auckland.ac.nz/business-navigators](https://auckland.ac.nz/business-navigators)

## Why study with us

- Our innovative, interdisciplinary Business Core delivers a hands-on interactive learning experience and builds the professional skills and knowledge that today's employers are looking for.
- You will be exposed to our 12 majors in your first year and can choose to complete a double major to gain breadth and enhance career options.
- You will experience the real world of business in cutting-edge specialist learning spaces. These include Te Ahi Hangarau Technology Hub, the BNZ Financial Trading Room and the Centre for Innovation and Entrepreneurship.
- We're in the top 1% of the world's business schools, with our much-envied Triple Crown accreditation. This recognises our high academic standards and ensures global recognition of your degree.
- Our accounting pathway is recognised by CA ANZ and CPA Australia.
- You can enjoy a range of fun, industry-focused clubs and organisations, providing opportunities for personal skills development to enhance your employability.
- Our students are highly sought after by employers in New Zealand and overseas. Ninety-six percent of our graduates find jobs within a year of completing university. (University of Auckland Graduate Destination Survey 2023)

## Programme highlights

### Business core

In your first year, you'll get hands-on learning with an integrated set of six core courses. You'll participate in active and interactive learning in workshops where you'll solve real-world business problems.

All programmes include a Waipapa Taumata Rau core course, which should be completed in your first year. It focuses on core knowledge relevant to our faculty, the significance of place-based knowledge, and Te Tiriti o Waitangi.

### [auckland.ac.nz/wtr-course](https://auckland.ac.nz/wtr-course)

In the second year, you'll take a Business Consulting core course and tackle 'grand challenges' facing the world today, such as the future of work, sustainability and digital disruption. You'll develop skills in communication, teamwork, negotiation and project management in exciting assessment modes.

In your third year, you'll choose from a range of capstone experiences and showcase all the skills and knowledge you've gained.

### Major or double major

As you move into your second year, you will choose a major or double major to gain specialist knowledge and skills that will prepare you for your career path. Our majors give you the best possible start for a career in business.



**Prepare for  
the real world of  
business with real-  
world learning**

**Find out more**  
[auckland.ac.nz/bcom](http://auckland.ac.nz/bcom)

***“I think the first-year Business core is really helpful because it gives you a bit of a taste of everything. That’s actually how I figured out what I wanted to major in – I chose the courses I enjoyed and found applicable to real life and made them into my majors.*”**

*“I am able to apply a lot of what I’ve learned in my degree in both my personal and professional life. For example, knowing your employee rights. When I was self-employed I was able to use what I had learnt at university about employment law to set myself up as self-employed.*”

*“And from studying Marketing, I was able to learn how to manage relationships, communicate with customers and understand consumer psychology. In the working world, you’re dealing with people all the time, whatever your role may be, so it was really useful.*”

*“I also learned so many transferable skills through my degree which I have been able to use in my work: communication skills, relationship building, time management, prioritisation, team work and so much more. I found a degree in Commerce was great at giving you that overall skill set that you needed when you enter the workforce. Everything I’ve learned at university has had some impact at one of my roles.”*

## **Caitlin Gunasekara**

**Graduate: Bachelor of Commerce  
(Commercial Law, Marketing)**

**Professional Services Consultant,  
ELMO Cloud HR & Payroll**

# Mātai Whakawhitinga

## Communication

Communication is more important than ever in today's world. Organisational, social and global change are all strongly influenced by the ways in which politicians, activists, entrepreneurs and leaders communicate. The Bachelor of Communication (BC) will help you to get messages across in a clear, persuasive and ethical way. We'll develop your skills as a leader of the future.

### Quick facts – BC

**Full time:** 3 years

**Points per degree:** 360

**Taught at:** City Campus

**Application closing date:** 8 December 2025

(Late applications will be considered if places are available.)

**Classes start:**

Semester One: 2 March 2026

Semester Two: 20 July 2026

**Conjoint combination:**

Arts

### Why study with us

- We delve into social media, ethics, advertising, digital communication, public speaking, writing and visual communication.
- We lay strong foundations so you can grow your knowledge of Māori and Pacific communication.
- Our hands-on approach will activate your learning, focus your thoughts, and bring results.
- You'll gain real-world experience through practical projects and internships.
- If you're ready to step up, we're ready to help you. We'll prepare you for leadership roles in many different fields.
- How about opportunities to learn from industry experts? We'll enhance your knowledge and networks.
- We also offer overseas study, internships and experiential learning.

### Programme highlights

You'll study subjects such as technology, social change, and leadership. Examine how artificial intelligence impacts communication and our connections both online and offline. Or practice for leadership roles by developing inclusivity, conflict resolution, and listening skills. And from climate change to gender equality, social change explores how social media, film, art and other platforms can build social change messaging.

You'll explore communication in te ao Māori and Pacific cultures, focusing on ethical issues surrounding bicultural communication. You'll come to appreciate the significance of Te Tiriti o Waitangi for communication practitioners.

You'll grow through our emphasis on whakawhanaungatanga (relationship building) and ways of engaging.

All programmes include a Waipapa Taumata Rau core course, which should be completed in your first year. It focuses on core knowledge relevant to our faculty, the significance of place-based knowledge, and Te Tiriti o Waitangi.

[auckland.ac.nz/wtr-course](http://auckland.ac.nz/wtr-course)

### Choose your career

In both the public and private sectors, communications professionals are in demand. They play a key role in helping their organisations to achieve their goals. Join them by honing your skills in writing, public speaking and presentation, critical and creative thinking, project management, writing, research and cultural competency.

These skills are essential for roles in content production, digital media, digital technologies, advertising, public relations, digital communication, broadcast media, internal and corporate communication, marketing and more. Get ready to use your knowledge and skills not only in communications but also in general leadership roles. You could find yourself working anywhere, from the creative industries to government agencies, in a start-up or as a freelancer.

### Interested in further study?

After your BC there are many opportunities for advanced study and research. For example, the Master of Arts in Media and Screen Studies allows you to focus on an area of interest at a more advanced level.

You could also complete a Master of Communication degree online.

*Launch your  
career in comms,  
PR, advertising or  
media*

**Find out more**  
[auckland.ac.nz/bc](http://auckland.ac.nz/bc)



***“I have always wanted to learn how interpersonal and mass communication affect our daily lives, and how important communication is in every sector of the world.***

*“In my study, I have focused particularly on how leaders communicate and how this influences positions of leadership.*

*“One of my favourite papers was Comms 100. We had to create videos about a topic we are passionate about, which developed my practical skills and allowed me to enjoy creative freedom. I also took a Philosophy course this semester, and it has been so interesting to think about situations from different perspectives. It also helps me to navigate different situations in life.*

*“I love how all my subjects are in line with what I want to do in the future. I would like to work in public relations or brand marketing. I think it would be quite cool and hands-on to work with different brands.*

*“I chose to study at Auckland as I had heard wonderful things about the different programmes, how amazing the professors are, and how a student is able to get the best education for their choice of degree.*

*“University is very welcoming and friendly! I have joined clubs, including the student association, so I can make friends with other students who are studying similar degrees. One club I am part of is the Marketing and Design Club, which has organised networking events with marketing experts – I really enjoyed those! Being a member of a club has also expanded my social circle with the other events they host.”*

## **Mehak Sehgal**

**Student: Bachelor of Communication**

*“I wanted to fully commit to making dance a part of my future but wasn’t sure if I could make a career of it. The Dance Studies programme at the University of Auckland best suited my desires and passions, and I was amazed to discover all the possible pathways dance could take me.*”

*“During my degree, I constantly had lightbulb moments as I started to see my work come together and witness my efforts pay off. There were many different performance opportunities, and I learnt how valuable it is to be confident in your own skin and what you have to offer.*”

*“My lecturers and tutors were extremely helpful. They helped me work out a plan to allow me to complete my studies while training full-time, and I am forever thankful for that. I also formed special connections with my classmates which were pivotal in that chapter of my life.*”

*“The most rewarding thing about being a dance teacher is fostering connections with my students. I love witnessing their growth and developing an environment where they feel safe to express themselves and take risks.*”

*“I’m so grateful for the journey dance has taken me on. I have been able to travel the world, training with Parris Goebel and performing in music videos for Justin Bieber and Ciara. I want to share the knowledge I have learnt through my career and make dance an enjoyable, accessible and positive experience for every learner, regardless of age, gender or ability.*”

*“Studying Dance opens up endless opportunities to be exposed to different perspectives and learn from masters in their fields. Dance allows you the space to find your creative voice and realise what you can bring to the world.”*

## **Maddy Golightly**

**Graduate: Bachelor of Dance Studies,  
Graduate Diploma in Teaching (Secondary)**

**Dance Teacher at Massey High School**





# Mātai Kanikani

## Dance Studies

Dance Studies staff are award-winning teachers, choreographers, artists and academics, who are skilled in developing dance students to their full potential. The Bachelor of Dance Studies offers you the opportunity to develop your physical and intellectual prowess. You will gain skills, networks and attitudes that will transform your view of dance and enable you to build a sustainable career. Making friends, building a family spirit, dancing on international stages and establishing career direction could all be part of your Dance Studies experience.

### Quick facts – BDanceSt

**Full-time:** 3 years

**Points per degree:** 360

**Taught at:** City Campus

**Application closing date:** 8 December 2025  
(Late applications will be considered if places are available.)

**Classes start:**

Semester One: 2 March 2026

Semester Two: 20 July 2026

### Why study with us

- Ngā Akoranga Kanikani Dance Studies Programme is a vibrant multicultural and creative environment.
- We are leading dance teachers and professionals.
- Our approach to dance is holistic, balancing practice and theory.
- We activate our knowledge and skills in community settings.
- You'll flourish through abundant performance opportunities, both in New Zealand and overseas.
- We'll support you to pursue research in a postgraduate degree.

### Programme highlights

We offer a range of exciting courses in your first year. You'll learn to communicate your ideas through dance, choreography and writing.

Your first year with us will encompass:

- Choreography and contemporary dance
- Dance history and analysis
- Dance vocabulary, theory and practice
- Dance education
- Dance kinesiology
- Kaupapa hōu and kapa haka
- Pacific music and dance

As you progress to graduation, you'll continue to strengthen your personal choreographic style and performance skills. You'll visit different community groups and develop your teaching and leadership abilities. You'll learn more about improvisation, technology and professional practices. You'll develop your business skills and have the chance to research personal areas of interest.

All programmes include a Waipapa Taumata Rau core course, which should be completed in your first year. It focuses on core knowledge relevant to our faculty, the significance of place-based knowledge, and Te Tiriti o Waitangi.

[auckland.ac.nz/wtr-course](https://auckland.ac.nz/wtr-course)

### Choose your career

Performer, choreographer, dance teacher, dance photographer, dance movement therapist, producer, company director, community arts worker, fitness and wellness coach (for example, working with less agile participants, the elderly, ill or those with special needs), studio owner, dance writer and researcher, independent practitioner (in commercial dance, contemporary dance, hip hop, and cultural groups and collectives)

We'll ensure that you understand all the opportunities available to you. We'll support you to make connections as you move into the industry.

### Interested in further study?

A BDanceSt qualification can lead on to the Bachelor of Dance Studies (Honours) (BDanceSt(Hons)) or Postgraduate Diploma in Dance Studies (PGDipDanceSt). From there you can go on to a Master of Dance Studies (MDanceSt), Master of Community Dance (MCommDance) or a Master of Dance Movement Therapy (MDMT). (Some masters programmes accept BDanceSt graduates. All masters programmes can lead on to a PhD in Dance Studies.)

### How do I apply?

Scan the QR code or follow the link below to find out how to apply and prepare for your group workshop/interview.

[auckland.ac.nz/bdancest](https://auckland.ac.nz/bdancest)



*Follow your passion  
at NZ's No.1 university  
for performing arts\**

**Find out more**  
[auckland.ac.nz/bdancest](https://auckland.ac.nz/bdancest)

# Hoahoa Design

We aim to prepare you for the new and exciting world of design. Designers are strategists, leaders, analysts and makers who envision and create the future of service, experience, systems and products. Pursue a Bachelor of Design at one of the world's leading universities for sustainable impact\* and learn how to use the transformative power of design.

## Quick facts – BDes

**Full-time:** 3 years

**Points per degree:** 360

**Taught at:** City Campus

**Application closing date:** 8 December 2025

**Classes start:** 2 March 2026

**Conjoint options:**

Arts, Commerce, Engineering (Honours),  
Science

## Why study with us

- Our dedicated studio spaces are exciting creative environments, with extensive technologies for prototyping and experimenting.
- Our academics come from diverse backgrounds. They're leaders in a wide array of design fields.
- You'll study among thriving networks of industry leaders and emerging entrepreneurs, both local and international.
- Our flexible degree structure encourages personalised learning.
- We offer opportunities for overseas study, internships and experiential learning.

*Design for  
our changing  
world at NZ's  
most innovative  
university\*\**

**Find out more**  
[auckland.ac.nz/bdes](https://auckland.ac.nz/bdes)

## Programme highlights

From your first year, you'll apply design methodology and tools. These increase in complexity during your study as you develop your unique specialisation in design and refine your project leadership skills. Throughout the making process, you'll investigate how social, ethical, environmental and economic factors influence design decisions. And you'll learn how to accommodate these factors in your design interventions. Your hands-on project work will enable you to begin building a portfolio and design profile.

You'll experiment with materials and technologies such as virtual and augmented realities, 3D printing and robotics. You'll also explore traditional design techniques, such as sketching and modelling. You'll work independently and with classmates on both imagined and real industry projects.

As you progress, you'll build a personalised study plan around your core courses. You'll choose electives from four design themes:

- Design and Local Community Practices
- Design and Global Challenges
- Design and Business
- Design and Emerging Technologies

Your teachers will include both academics and specialists from industry. Our workshops, studios and labs are supervised by qualified support staff. They're always exploring the latest in making and prototyping to support your creativity.

All programmes include a Waipapa Taumata Rau core course, which should be completed in your first year. It focuses on core knowledge relevant to our faculty, the significance of place-based knowledge, and Te Tiriti o Waitangi.

[auckland.ac.nz/wtr-course](https://auckland.ac.nz/wtr-course)

In your last year, you'll complete a final capstone design project, working from the initial discovery phase through to testing and implementation.

## Choose your career

Designers are increasingly relied on to lead innovation. They find work in multiple industries, including business, science and entertainment. Designers are hired to address business challenges and opportunities in a responsibly disruptive way. They drive innovative solutions and exceptional user experiences.

Our goal is to ensure that you graduate understanding all the opportunities available to you.

Possible roles include experience designer (UX), service designer, interface designer (UI), interaction designer (IXD), creative technologist, design strategist, information designer, systems designer and customer experience designer (CX).

The job market is constantly changing, and new roles will continue to appear. We teach the core design skills these jobs require. This uncharted territory is precisely the kind of place in which designers thrive.

## Interested in further study?

Postgraduate programmes include the Master of Design (MDes) and Doctor of Philosophy (PhD).

## How do I apply?

Scan the QR code or follow the link below to find out how to apply for the BDes or one of four Design conjoint degree programmes.

[auckland.ac.nz/bdes](https://auckland.ac.nz/bdes)



\*Times Higher Education University Impact Rankings 2024

\*\*Times Higher Education Most International Universities 2024



***“Design is all about innovating and improving. Study Design if you are genuinely curious about how your ideas can impact the world around you.”***

*“The degree focuses on cross-disciplinary design and developing a core skillset that you can apply to different industries and use to solve problems. With the skills I have gained, I can approach and tackle any problem I face with a creative mindset.”*

*“The best part about studying design was the people – the students and staff. I loved seeing people apply their skills to solve problems in ways I would never have thought of. My favourite project was developing a concept for a platform to facilitate talanoa (discussion) about diversity in the workplace. The project focused on eliminating unconscious bias to create truly inclusive workplaces.”*

*“Studying Design allowed me to explore and turn my ideas into reality. The staff offer a wealth of knowledge. They are curious individuals eager to build up the next generation of designers.”*

## **Terall Timoti**

**Graduate: Bachelor of Design**

**UX Designer at Auckland Transport**

*“One of the main highlights from this programme are the teaching staff I have met – everyone has been extremely helpful, kind and understanding.”*

*“The lecturers all have incredible life stories and experiences that shape their unique way of teaching. This helped me realise that everyone’s way of teaching and learning is different, but this doesn’t change the quality of it at all.”*

*“It has been interesting to see how my lecturers use te ao Māori and tikanga to enhance our learning. Which is also a great example of how we can do this in our own classrooms as teachers.”*

*“Studying education has been incredibly rewarding. Seeing the smiles on my students’ faces, seeing them progress in their learning and building those relationships has been an incredible feeling. I can’t imagine anything better than this.”*

## **Kirti Raju**

**Graduate: Bachelor of Education  
(Teaching) Primary**



# Mātauranga/Whakaako Education/Teaching

Inspire new generations with a love of learning and a passion for making a difference in the world. Teachers and educators are in high demand in New Zealand and overseas. Our range of programmes will expose you to national and global issues facing communities – and challenge you to explore solutions for change.

## Quick facts – BEd(Tchg)

**Full-time:** 3 years  
(Part-time study options also available.)

**Points per degree:** 360

**Taught at:** City Campus

**Specialisation:** Primary

**Application closing date:** 31 January 2026  
(Late applications will be considered if places are available.)

**Classes start:** 2 March 2026

## Why study with us

- We're one of the world's top universities for Education.\*
- If you already have an undergraduate degree and want to become a qualified teacher, we offer a one-year programme, either at City Campus or online.
- A minimum of 120 days of practical experience, including 80 days in your final year, in a mix of schools will help you to develop effective techniques. You'll reflect on your practice and build important relationships with expert teachers.
- We focus strongly on te ao Māori and Pacific cultures to meet the needs of diverse learners in today's classrooms.
- You may qualify for a TeachNZ scholarship, worth up to \$10,000.

## Programme highlights

Our refreshed programme will enable greater freedom for you to choose courses from other disciplines across the University. Designed in two parts, Part One will introduce you to key disciplinary knowledge and provide some experience in schools, while Part Two focuses strongly on practice, professional identity, curriculum and pedagogy. You will develop foundational critical and ethical thinking, communication skills, and collaborative skills essential for success in the workforce.

Each year of the programme will include an in-school practicum experience. Over the first two years of the programme you will have some flexibility in timing your required teaching experience days. In the third year of the programme, you will complete 80 days of sustained teaching experience where you will work alongside inspiring teachers to prepare for a successful start to your teaching career.

All programmes include a Waipapa Taumata Rau core course, which should be completed in your first year. It focuses on core knowledge relevant to our faculty, the significance of place-based knowledge, and Te Tiriti o Waitangi.

[auckland.ac.nz/wtr-course](http://auckland.ac.nz/wtr-course)

## Other pathways into the BEd(Tchg)

If you don't have the grades to gain entry to the programme, the University of Auckland offers the one-year, full-time Tertiary Foundation Certificate (TFC). For more information about the TFC and the University's full range of preparation programmes, see pg. 34. The New Start programme is also available.

If you don't meet the English language requirements for admission, the University's English Language Academy (ELA) offers English language preparation courses.

[auckland.ac.nz/ela](http://auckland.ac.nz/ela)

[auckland.ac.nz/preparation](http://auckland.ac.nz/preparation)

## Choose your career

A professional teaching qualification is your key to leading learning and changing lives.

Our graduates are in high demand. They typically go on to teach in schools, kura and early childhood settings such as puna kōhungahunga and kindergartens in New Zealand and overseas.

Your studies in education can also lead to a range of other careers. These include planning and developing education policy, human resources, research, educational psychology, training and other educational roles within various organisations. The transferable skills you will develop with your teaching degree are valuable across a broad range of other careers.

**Other career opportunities include:**

- Education consultant
- Learning designer
- Policy adviser
- Curriculum developer
- Special needs expert
- Human resources consultant
- Iwi development worker

**Ranked 37th  
in the world for  
Education\***

**Find out more**  
[auckland.ac.nz/bedtchg](http://auckland.ac.nz/bedtchg)

\*QS World University Rankings by Subject 2024, 37th in the world

## Quick facts – Graduate Diploma in Teaching (GradDipTchg)

**Full-time:** 1 year

**Points per programme:** 150

**Specialisations:** Early Childhood Education (ECE), Primary, Secondary

**Taught at:** City Campus or Online

**Application closing date:**

20 December 2025 (ECE and Primary)

15 January 2026 (Secondary)

Late applications will be considered if places are available.

**Classes start:** January/February 2026<sup>2</sup>

## Why study with us

- Our one-year programme is designed for people who already have an undergraduate degree and want to become a qualified teacher.<sup>3</sup>
- You'll apply the latest teaching techniques and theories in practical settings.
- You'll spend over 20 weeks in schools, kura or education centres, gaining practical experience, building key relationships, and reflecting on teaching practice, with support from an experienced teacher.
- TeachNZ scholarships worth up to \$10,000 are available.
- There's an online study option for students wanting flexibility with their learning.<sup>4</sup>

**Number one  
university in  
New Zealand for  
Education<sup>1</sup>**

**Find out more**

[auckland.ac.nz/becomeateacher](https://auckland.ac.nz/becomeateacher)

## Quick facts – Bachelor of Early Childhood Studies (BECSt)

**Full-time:** 3 years

(Part-time study options also available.)

**Points per degree:** 360

**Taught at:** City Campus

**Application closing date:** 31 January 2025

Late applications will be considered if places are available.

**Classes start:** 2 March 2026

(20 July 2026 for the mid-year intake)

This unique programme will provide you with specialist knowledge and skills relevant to children from birth to eight years old.

Through your studies, you'll develop expertise in the complex and vital early years of children's lives. The range of courses will cover te ao Māori and diversity, human development, education and society, educational psychology, and curriculum studies.

You'll benefit from practical placements in a range of settings throughout the programme. These will allow you to explore areas of interest and prepare you for careers in early childhood services. These include policy and leadership roles in New Zealand and overseas.

All programmes include a Waipapa Taumata Rau core course, which should be completed in your first year. It focuses on core knowledge relevant to our faculty, the significance of place-based knowledge, and Te Tiriti o Waitangi.

**[auckland.ac.nz/wtr-course](https://auckland.ac.nz/wtr-course)**

If you decide that a teaching career in New Zealand is for you, you can gain registration by adding a one-year Graduate Diploma in Teaching (Early Childhood Education) or Graduate Diploma in Teaching (Primary).

**[auckland.ac.nz/becst](https://auckland.ac.nz/becst)**

## Education as an Arts subject

If you're interested in Education, but don't plan to become a teacher, you can major in Education as a subject in the Bachelor of Arts. You can choose courses that cover the history, sociology, philosophy and politics of education, the psychology of development, learning and teaching, as well as te ao Māori and Pacific views on education.

This can open up a variety of career paths, including educational services, local government, social and community services, and policy analysis. For more information on the Bachelor of Arts, see pg. 40.

If you then decide you want to enter teaching as a profession, you can add on a one-year Graduate Diploma in Teaching.

## Interested in further study?

We offer a range of postgraduate qualifications and professional development programmes for you to further your learning and career.

From a bachelors degree you could go on to study at honours or masters level and after that complete a doctorate. Study in specialist areas is also available.

**[auckland.ac.nz/pg-study](https://auckland.ac.nz/pg-study)**

<sup>1</sup> QS World Rankings by Subject 2024 (37th in the world)

<sup>2</sup> See confirmed dates online [auckland.ac.nz/becomeateacher](https://auckland.ac.nz/becomeateacher)

<sup>3</sup> Note: To teach at secondary school level you will need to have taken, as part of your undergraduate degree, sufficient courses in a subject taught in New Zealand secondary schools. (For example, if you want to become a Science teacher, you will need to have included sufficient courses in Science subjects in your undergraduate degree.)

<sup>4</sup> Online students can be located anywhere in NZ and will attend practicum placement locally. For more information see [auckland.ac.nz/becomeateacher](https://auckland.ac.nz/becomeateacher)



*“There is a stereotype that women dominate early childhood education, and I want to help break down this stereotype. As a Pasifika male, I can bring a unique perspective to the area and be a role model for other Pasifika males interested in pursuing a career in early childhood education.*”

*“It is a field that requires patience, hard work, and dedication, but it’s also a rewarding career that allows you to positively impact the lives of children and their families.*”

*“I was drawn to the University of Auckland because of the range of academic programmes and courses offered and I was really impressed by the university’s commitment to providing students with a well-rounded and interdisciplinary education.*”

*“I was also excited about being part of a vibrant and dynamic academic community. Our lecturers and tutors are knowledgeable and passionate about early childhood education and are always willing to help us with any questions or concerns.*”

*“The University of Auckland has helped me grow and develop as a student and a person, and I’m excited to see where this journey takes me.”*

## **Uasinitone (Uasi) Auvele**

Graduate: Bachelor of Early  
Childhood Studies

*“I’m an international student from Shanghai, China. I chose to study in New Zealand after travelling around the country with my mum during high school. I chose the University of Auckland because of its world-famous reputation and outstanding quality of education.*

*“After graduating, I’m planning to continue studying for a graduate or masters degree in teaching and would love to become a primary school teacher in New Zealand.*

*“The highlight of my TESOL programme so far has been the chance to participate in school placements. We got to see what it’s like teaching in New Zealand classrooms. During our practicum, I not only learned precious teaching techniques, but also how culture, identities and curriculum design can impact language learning.*

*“The lecturers and tutors have all been very supportive. They help us aim for the top, and the issues we discuss closely connect to our future teaching practice.*

*“Along with the academic support from lecturers and tutors, organisations like the Student Hubs really helped me a lot in my course enrolment; and Career Development and Employability Services (CDES) always provided helpful advice and opportunities for my future career.*

*“Studying in New Zealand has been a wonderful experience because it is a culturally diverse country. In Auckland, especially in the inner city, you can enjoy authentic food from countries all over the world and participate in various cultural festivals and events. For nature lovers, Auckland also has tons of beaches and forests to explore. They offer you an amazing break from your study life.*

*“For those thinking of applying, there is great information on the University website, so what are you waiting for!?”*

## **Susan Wang**

**Student: Bachelor of Education (TESOL)**





# Mātauranga/TESOL

## TESOL Education (Teaching English to Speakers of Other Languages)

In today's interconnected and diverse world, the English language is a gateway to global communication. Turn your passion for language into teaching skills. Help your future students to participate as global citizens. This holistic degree provides you with a deep understanding of teaching English to students of all ages.

### Quick facts – BEd(TESOL)

**Full-time:** 3 years (Part-time study options are also available.)

**Points per degree:** 360

**Taught at:** City Campus

**Application closing date:** 31 January 2026

**Classes start:** 2 March 2026

(20 July 2026 for the mid-year intake.)

### Why study with us

- This is your chance to study at one of the world's top universities for Education\* – and prepare yourself to apply your new skills and knowledge internationally.
- Studying TESOL in Auckland places you in one of the world's most diverse cities.
- Our teaching philosophy is grounded in the Māori concept of "ako", which recognises the knowledge and experience that both teachers and students bring to learning.

### Programme highlights

You'll complete core TESOL courses, introducing you to language teaching, academic writing and New Zealand's bicultural context. This will develop your understanding of teaching, learning and assessment in language education. You'll grow skills and experience during your annual practical placement in a New Zealand language-teaching centre.

You'll build a strong foundation in curriculum development, teaching methods and assessment. You'll also build your knowledge in related disciplines. These include psychology, philosophy, sociology and history.

You'll apply the latest digital teaching tools in interactive and collaborative learning.

All programmes include a Waipapa Taumata Rau core course, which should be completed in your first year. It focuses on core knowledge relevant to our faculty, the significance of place-based knowledge, and Te Tiriti o Waitangi.

[auckland.ac.nz/wtr-course](http://auckland.ac.nz/wtr-course)

### Choose your career

You will graduate with the latest teaching skills and a deep understanding of current research, ideas, and practices. You'll have a robust foundation for teaching age groups from young learners to adults. You'll also be able to adapt your skills to different cultural and educational contexts.\*\* This qualification will be useful for education leaders and policy makers as well as TESOL teachers.

Career paths could include:

- Teaching in a language school, international school or university
- Working on educational programmes with refugees and migrants
- Consulting for community organisations or government agencies
- Community education classes or private tutoring for individual clients
- Education leadership
- Curriculum, textbook and resource development
- Education policy advice

### Interested in further study?

Through a variety of postgraduate study options you can develop further skills and knowledge. These are great opportunities to advance your interests and undertake research.

If you decide to pursue a teaching career in New Zealand, you can gain registration by adding a Graduate Diploma in Teaching. See pg. 54 for more details.

### Other pathways into the programme

If you don't have the grades to gain entry to the programme, the University of Auckland offers the one-year, full-time Tertiary Foundation Certificate. For more information about this and the University's full range of preparation programmes, see pg. 34.

[auckland.ac.nz/preparation](http://auckland.ac.nz/preparation)

\*QS World University Rankings by Subject 2024 rated the University of Auckland 37th in the world for Education.

\*\* If you wish to teach in a New Zealand school after graduating, you will first need to complete an additional one-year Graduate Diploma in Teaching.

# Mātai Pūkaha Engineering

Engineering underpins every aspect of our daily lives, from nanotechnologies in food, fabrics and smartphones to awe-inspiring skyscrapers and intriguing medical robotics. Our students and staff energetically pursue technological solutions to global challenges. A Bachelor of Engineering (Honours) degree will prepare you to problem solve and innovate no matter where you take it.

## Quick facts – BE(Hons)

**Full-time:** 4 years

**Points per degree:** 480

**Taught at:** City Campus

**Specialisations:** Biomedical, Chemical and Materials, Civil, Computer Systems, Electrical and Electronic, Engineering Science, Mechanical, Mechatronics, Software, Structural

**Application closing date:**

8 December 2025

**Classes start:**

Semester One: 2 March 2026

Semester Two: 20 July 2026

**Conjoint combinations:**

Arts, Commerce, Design, Music, Science

## Why study with us

- We're the top university in New Zealand for graduate employability\*. 94% of our students are in work within three months of graduation.
- Real-world projects are central to our balance of theory and practice.
- World-class research centres, equipment and study facilities allow you to gain maximum value from your efforts.
- Our specialisations are accredited by Engineering New Zealand and recognised internationally.
- We offer exciting prospects in a high-demand profession with excellent earning potential.
- We provide rich opportunities for overseas study, internships and experiential learning.

## Programme highlights

In the first year (Part I) you will study engineering and professional fundamentals:

- Electrical and digital systems
- Engineering biology and chemistry
- Engineering computation and software development
- Engineering design
- Engineering mechanics
- Materials science
- Mathematical modelling

All programmes include a Waipapa Taumata Rau core course, which should be completed in your first year. It focuses on core knowledge relevant to our faculty, the significance of place-based knowledge, and Te Tiriti o Waitangi.

**auckland.ac.nz/wtr-course**

The remainder of your programme will vary depending on the specialisation you enter. You will choose one from the ten Engineering specialisations offered.

Along with your specialisation courses, you'll complete a common core of mathematical modelling, technical communication and professional development. You'll also pursue elective courses to explore the topics that interest you the most.

You'll complete a 30–40-hour workshop practice course in Part II. This will provide hands-on experience with tools relevant to your specialisation. You will also be required to complete 800 hours of practical work experience throughout your degree.

In your final year (Part IV) you will apply your technical knowledge to problems relevant to industry. You'll also carry out a research project.

**auckland.ac.nz/behons**

## Specialisations

Go online to learn more about our ten Engineering specialisations. We also provide guidance for your application on the main BE(Hons) programme page.

**auckland.ac.nz/behons-specialisations**



## How do I apply?

**auckland.ac.nz/behons**



## Choose your career

Career possibilities are extensive. You will have skills for a variety of fields such as research and production of sustainable energy and materials, "smart" manufacturing applications in industry, software creation, and more.

## Interested in further study?

We offer a number of postgraduate qualifications, including postgraduate certificates and diplomas, masters degrees and PhDs. As a postgraduate student, you'll contribute to globally significant projects. You'll work with internationally respected researchers and enjoy the innovation facilities at our Newmarket Campus.

*Join us  
to develop  
technologies that  
make the world  
better*

**Find out more**  
**auckland.ac.nz/engineering**

\*Times Higher Education Global Employability University Ranking 2023-24



*“I really enjoyed my Final Year Project. It involved using analytics, optimisation, and data to model the borrowing of Te Reo Māori words into English, which is something I didn’t think you would even be able to do with an Engineering degree.”*

*“Engineering Science stood out to me because it wasn’t confined to one area or industry. The elective courses allow you to tailor the programme to your interests. I was particularly interested in technology and the data analysis side of Engineering Science.*

*“This year I’m the Vice President of SPIES, the South Pacific Indigenous Engineering Students network. Our events aim to support students culturally, academically, and socially. My favourite part of my role is being in a position of influence and creating events that nurture these areas. It’s been an incredibly rewarding role that has helped me gain leadership experience and develop professionally.*

*“Through my internship with Tetra Tech Coffey, I worked in the Environmental and Social Advisory team, primarily on Environmental and Social Impact Assessments and Environmental and Social Management Plans for various projects around the world. I loved the range of projects and being able to learn about the different environmental and social impacts that must be considered, as well as the different measures to manage these.*

*“I’d like to make a positive impact on communities through my career and prioritise sustainability and environmental concerns. I hope to include more of the technical skills that I’ve developed, and learn new software and programs used in the industry.”*

## **Grace Little**

**Ngāti Kahungunu, Rongomaiwahine;  
Nukunonu, Tokelau**

**Graduate: Bachelor of Engineering  
(Honours) in Engineering Science**

*“The curriculum at Elam embraced my need to try everything. I was introduced to various mediums that I had never been able to experience – performance art and sculpture, most importantly. I learned the value of play, experimentation and asking questions.”*

*“What I learned most at Elam is how to apply critical thinking to my art practice. Learning the skills to harness my intention allowed me to explore topics I care about, such as identity, mental health, queerness, body image, existentialism, and feminism. I have been able to recognise what I would like to create. I make illustrations that create a safe space for tough conversations while being light-hearted and approachable in everyday life.”*

*“Coming from a chronic overthinker, the best advice I have is to keep it simple when deciding where you would like to continue your career path. Are you a creative person who wants to learn more, connect with like-minded creatives and work with mediums you’ve never tried? Then come study at Elam.”*

## Sara Moana

Ngāti Tamaoho, Tainui  
Graduate: Bachelor of Fine Arts (Honours),  
Master of Fine Arts

Illustrator



# Toi Tōrire

## Fine Arts

Artists are storytellers, change-makers, disruptors and creators who shape our culture and enrich our society. In your Bachelor of Fine Arts, you'll develop skills in creativity, collaboration, critical thinking and entrepreneurship. These will prepare you to make an impact in the creative industries, businesses and the wider community. You'll have access to fabrication workshops, digital facilities, studios and galleries. Our specialist teachers and technicians will support and guide your making, allowing you to refine your skills and produce artworks of high calibre.

### Quick facts – BFA

**Full-time:** 3 years

**Points per degree:** 360

**Taught at:** City Campus

**Application closing date:**

8 December 2025 (Late applications will be considered if places are available.)

**Classes start:**

Semester One: 2 March 2026

Semester Two: 20 July 2026

**Conjoint options:**

Arts, Science

You'll work in shared open-plan studios. In regular critique sessions, you'll learn more about your artistic practice, yourself and your peers.

A hands-on technologies course will introduce, and support you in working with, the specialist tools, equipment, workshops and labs available at Elam.

While studying, you'll have opportunities to explore a range of practices and media, including:

- Art writing and criticism
- Ceramics
- Curatorial practices
- Digital media
- Drawing
- Installation
- Moving image
- Ngā toi taketake
- Painting
- Performance art
- Photography
- Printed matter
- Sculpture
- Social and public practice

A range of elective courses will support you as you explore ideas and technologies along with your studio practice. Through group learning, you'll gain both practical and theoretical understanding of your artworks.

All programmes include a Waipapa Taumata Rau core course, which should be completed in your first year. It focuses on core knowledge relevant to our faculty, the significance of place-based knowledge, and Te Tiriti o Waitangi.

[auckland.ac.nz/wtr-course](http://auckland.ac.nz/wtr-course)

### Choose your career

Artist, teacher, film and video maker, cinematographer, set and props designer, designer, illustrator, fashion designer, stylist, photographer, artistic director, advertising

professional, arts administrator, critic, curator, art auction specialist, gallery manager, community worker or entrepreneurial creative

### Interested in further study?

Postgraduate programmes include the Postgraduate Diploma in Fine Arts (PGDipFA), Master of Fine Arts (MFA) and two doctoral programmes.

### How do I apply?

Scan the QR code or follow the link below to find out how to apply for the BFA or one of two Fine Arts conjoint degree programmes.

[auckland.ac.nz/bfa](http://auckland.ac.nz/bfa)



### Why study with us

- You'll have opportunities to work with leading artists and researchers.
- Our flexible degree structure allows personalised learning.
- Workshops, labs, studios and equipment will support your making across a range of practices.
- At Te Waka Tūhura Elam Galleries we present a wide programme of exhibitions by our students. Be one of them!
- We offer exciting opportunities for overseas study, internships and experiential learning.

### Programme highlights

The BFA is flexible, so you'll build a pathway of study that feels right for you. But whatever you choose, you'll learn in three key areas:

- Creative artistic practices
- Research themes
- Creative careers

Study in these three areas makes up your artist's toolkit and sets you up for a lifetime of creative thinking and making.

*Find your voice at  
Elam*

*Find out more*  
[auckland.ac.nz/bfa](http://auckland.ac.nz/bfa)

# Mātai Ao Whānui

## Global Studies

Do you want to make a difference in the world? The Bachelor of Global Studies will prepare you to be an informed global citizen who can grapple with real-world problems. You'll learn how to navigate the world's complex political, economic and environmental issues. You'll develop skills in a second language and learn how diverse disciplines can interact. We will prepare you for careers in international organisations or New Zealand enterprises with a global focus.

### Quick facts – BGlobalSt

**Full time:** 3 years

**Points per degree:** 360

**Taught at:** City Campus

**Application closing date:**

8 December 2025

**Classes start:** 2 March 2026

**Conjoint combinations:**

Arts, Commerce, Law, Science

### Why study with us

- Global Studies opens opportunities to critically challenge how the world operates.
- Our programme dynamically combines knowledge and insights from across the University.
- Cultural enrichment is among the many benefits of second-language learning. It's a key foundation for communicating with people of different backgrounds.
- We offer plentiful opportunities for overseas study, internships and experiential learning.

### Programme highlights

Global Studies will illuminate the links between your local experience and global issues. You'll look at the world in new ways and challenge your own assumptions about the way it works. You'll question, adapt and grow, becoming flexible and resilient for a wide range of careers both locally and abroad.

Team-led activities, workshops and research projects will help you develop critical thinking, leadership and communication skills.

In your first year, you will probably take a mixture of courses. Among them will be GLOBAL 102, in which we introduce the field of Global Studies.

All programmes include a Waipapa Taumata Rau core course, which should be completed in your first year. It focuses on core knowledge relevant to Global Studies, the significance of place-based knowledge, and Te Tiriti o Waitangi.

[auckland.ac.nz/wtr-course](http://auckland.ac.nz/wtr-course)

In your second and third years, you'll take courses in your chosen language and region.

Other courses will cover areas such as global politics and human rights, international relations and business, global environment and sustainable development, and transnational cultures and creative practices.

In your final year, you will complete a course on global challenges, followed by a research project.

[auckland.ac.nz/global-studies](http://auckland.ac.nz/global-studies)

### Majors

You will choose one of four majors:

**Global Environment and Sustainable Development**

Learn about the connections between environmental and developmental challenges.

**Global Politics and Human Rights**

Develop a strong understanding of global politics, law and human security.

**International Relations and Business**

Gain specialist knowledge of international affairs and global business.

**Transnational Cultures and Creative Practice**

Explore transnationalism, the increasing interconnectedness between people and organisations across borders.

### Language and regional studies

Knowledge of another language and culture is essential to Global Studies. In line with best practice in overseas universities, you will undertake language training and can study the area of the world where your chosen language is most commonly spoken.

You can choose from a wide range of language and region combinations:

- Asia
- Europe
- Latin America
- New Zealand
- The Pacific

### Choose your career

The degree can prepare you for a career in a variety of settings. These include international organisations in the public or private sectors, the cultural sector, international development, the environmental sector, local and national government, NGOs and not-for-profits, foreign affairs and diplomacy, and international media. Global Studies graduates work as foreign correspondents, international trade consultants, human rights advocates and policy analysts.

### Interested in further study?

We offer a Master of Global Studies (MGlobalSt) programme and a Postgraduate Diploma in Global Studies (PGDipGlobalSt).

Depending on your areas of study, you could also go on to a postgraduate qualification in a relevant area, such as Politics and International Relations, Conflict and Terrorism Studies, Public Policy, or Museums and Cultural Heritage.



*“I chose International Relations as my major because of the broadness I find it offers. You will study economics, international trade and politics courses, so you really develop a wide range of skills. I had a keen interest in international trade, and I thought it would be a great combo to pair with my specialisation in Chinese.”*

*“When I graduate, I would like to work in the public sector, either as a financial adviser or in a non-governmental organisation (NGO).”*

*“I chose to study at the University of Auckland because of the University’s reputation. Plus, there is the added convenience of being so close home, which was a big advantage to me.”*

*“I’m part of the Auckland University Global Studies Society (AUGSS). It’s the official student body of Global Studies students and as the Vice President, I’m in charge of strategic planning and the representation of our students. We offer mentorship and social events to help develop a community and get Global Studies students involved.”*

*“The best part of being a Global Studies student is being part of a community where everyone is included and accepted. The people you meet along the way are really kind and sweet, so you develop long-lasting friendships. Get stuck in and meet new people. You never know who your best friend could be.”*

## **Leif Fernandez**

**Student: Bachelor of Global Studies/  
Bachelor of Commerce conjoint**

***“The Bachelor of Health Sciences (BHSc) has so many excellent health career pathways for graduates. You can work in various areas of health, spanning from public health and policy to management, consultancy, or clinical programmes.***

*“I’m excited to use the versatile skills the BHSc has given me to study further at postgraduate level.*

*“In high school, I loved to volunteer and get involved with giving back to my community. Because of my love of science and interest in helping people, my family and teachers suggested healthcare would be an excellent fit for me. Whilst starting university during COVID-19 was challenging, it sparked my interest in public health, an interest that has only continued to grow.*

*“I like how tight-knit my BHSc cohort has become, both with peers and lecturers. I love how open the lecturers and tutors are, and how willing everyone is to assist with both personal and academic issues.*

*“Student support at the faculty is excellent. I have joined many clubs and found the knowledge and connections I’ve gained invaluable to my university experience. I encourage all new students to join as many groups and clubs as you can, and make sure you visit our faculty’s Student Support team.”*

## **Celesti Tan**

**Student: Bachelor of Health Sciences/  
Bachelor of Science conjoint**





# Mātai Pūtaiao Hauora

## Health Sciences

### Bachelor of Health Sciences (BHSc)

If you have a broad interest in public health – and especially if you're passionate about addressing population health issues – then Health Sciences is a great place to start your journey. The BHSc is excellent preparation for a wide range of health-related careers. You will delve into the socio-economic and behavioural factors affecting health and healthcare provision. The programme also explores the government's role in health policy, how health systems function, and the environmental and social influence of ill-health in our communities.

### Quick facts – BHSc

**Full-time:** 3 years

**Points per degree:** 360

**Taught at:** Grafton Campus (mainly) and City Campus

**Application closing date:** 8 December 2025

**Classes start:** 2 March 2026

**Conjoint combinations:**

Arts, Commerce, Law, Science

The structure of the BHSc programme and entry into Medicine, Medical Imaging, Optometry and Pharmacy programmes are changing. Please monitor the online programme page for the most up to date details.

[auckland.ac.nz/bhsc](http://auckland.ac.nz/bhsc)

### Why study with us

- We illuminate health and healthcare in New Zealand through multiple lenses. We blend deep insights into the biological, environmental, cultural and behavioural dimensions of health and illness.
- A BHSc leads to diverse careers in the public, private and community non-profit sectors.
- Alternatively, you can apply for entry into some of our clinical programmes in July of the first year.
- You can also combine a BHSc in a conjoint degree.
- We offer opportunities for an overseas exchange programme and experiential learning.

### Programme highlights

In the first year you will focus on the health of populations with courses such as Social Determinants of Health, Health Systems, and Population Health.

This programme covers a wide range of topics of interest such as Health Promotion, Food, Environments and Population Health, Digital Health, Health Systems, and Mental Health and Addictions.

You may also have the opportunity to experience a work placement with a health employer.

All programmes include a Waipapa Taumata Rau core course, which should be completed in your first year. It focuses on core knowledge relevant to our faculty, the significance of place-based knowledge, and Te Tiriti o Waitangi.

[auckland.ac.nz/wtr-course](http://auckland.ac.nz/wtr-course)

### Admission schemes

#### Māori and Pacific Admission Scheme (MAPAS)

The Māori and Pacific Admission Scheme provides admission, academic and pastoral support for Māori and Indigenous Pacific students. This scheme is an integral part of Vision 20:20 – a faculty initiative to increase the number of Māori and Pacific professionals in the health workforce.

[auckland.ac.nz/fmhs/mapas](http://auckland.ac.nz/fmhs/mapas)

Applicants with New Zealand Māori and/or indigenous Pacific ancestry can also apply through MAPAS to enter the Hikitia Te Ora – Certificate in Health Sciences programme.

### Choose your career

Employers in the public and private sectors seek our graduates. The BHSc opens up a range of exciting career opportunities in the health and social sectors, including the following roles: Policy Analyst, Health Service Manager, Health Promoter, Health Researcher, Business Development Manager, Addictions Counsellor, Population Nutrition Specialist.

A wide range of public and private organisations support the programme with work placements for our third-year students. Subsequently employers actively seek out BHSc graduates because of their strong and broad foundation in health. This is coupled with well-honed skills in critical thinking, writing and analysis.

### Interested in further study?

After completing their BHSc, many of our graduates continue their development through a range of postgraduate programmes. Others return for postgraduate study after working for a time in the health and social sectors.

We offer a range of postgraduate programmes, masters degrees and doctorates. The BHSc may also lead to postgraduate study in public health, health leadership, digital health, Pacific health, health promotion, health practice, audiology and health sciences in nutrition and dietetics. Conjoint students are also eligible for postgraduate study in their chosen discipline.

[auckland.ac.nz/bhsc](http://auckland.ac.nz/bhsc)

*Prepare for a  
great career in the  
health sector*

*Find out more  
[auckland.ac.nz/fmhs](http://auckland.ac.nz/fmhs)*

# Mātai Pūtaiao Hauora

## Health Sciences

### Hikitia Te Ora – Certificate in Health Sciences (CertHSc)

The Certificate in Health Sciences may be the best starting point for your health career. This one-year programme provides students of Indigenous Māori and Pacific ancestry with the skills and content knowledge needed to apply for study in the Faculty of Medical and Health Sciences. If you're a school leaver or returning to study, the CertHSc can help strengthen your sciences, improve your academic writing and prepare you for success. If you'd like to be considered for the CertHSc, you must attend the Māori and Pacific Admissions Scheme (MAPAS) General Interviews.

### Quick facts Hikitia Te Ora – CertHSc

**Full-time:** 1 year

**Points per degree:** 120

**Taught at:** Grafton Campus

**Application closing date:** 8 December 2025

**Classes start:** 23 February 2026 (Includes Week "O", a compulsory orientation week.)

[auckland.ac.nz/certhsc](http://auckland.ac.nz/certhsc)

### Why study with us

- This programme is designed for students of Indigenous Māori and Pacific ancestry who require strengthening in science-related topics within a culturally safe environment.
- We lay robust foundations for ongoing success in courses offered by the Faculty of Medical and Health Sciences.
- You'll learn in many ways, as the weekly schedule includes lectures, workshops, tutorials, labs and self-directed study. There's also a wānanga each semester.
- You'll share your learning experiences with your whole year group, as they will with you, all within a supportive educational community.

### Programme highlights

This one-year programme is both thorough and rewarding.

We introduce key concepts in physics, chemistry, population health, human biology and mathematics.

You'll also learn academic and professional skills, such as note-taking, time management, essay and report writing and critical thinking.

Most valuably, your own success will increase your confidence, self-belief and independence.

### Where can the programme take you?

The Hikitia Te Ora – Certificate in Health Sciences provides an entry pathway into the Bachelor of Nursing, Bachelor of Health Sciences (BHSc) or Bachelor of Science (BSc). Subsequent entry pathways into medicine, medical imaging, optometry and pharmacy are changing. Please refer to the online programme page for the most up to date details.

[auckland.ac.nz/certhsc](http://auckland.ac.nz/certhsc)

### Māori and Pacific Admission Scheme (MAPAS)

Applicants with New Zealand Māori and/or Indigenous Pacific ancestry can apply for admission through the Māori and Pacific Admission Scheme. This is an integral part of the faculty's commitment to te Tiriti o Waitangi and to Vision 20:20, an initiative that aims to increase the number of Māori and Pacific graduates across the health professions.

Anyone wishing to be considered for the CertHSc must attend the MAPAS General Interviews.

[auckland.ac.nz/fmhs/mapas](http://auckland.ac.nz/fmhs/mapas)

*Strengthen  
your sciences,  
hone your  
academic skills  
and prepare for  
success*

*Find out more*  
[auckland.ac.nz/fmhs](http://auckland.ac.nz/fmhs)



*“With my passion for Biology and Chemistry in high school, I’ve always been aware of healthcare as a career option. It was my love of volunteering at retirement homes that really cemented my interest.*”

*“I was excited to enrol at the Faculty of Medical and Health Sciences to not only pursue a career related to health, but also to be part of the inclusive and accepting on-campus culture. It was important for me to have a connection to my Pacific heritage, which was made easy by the Māori and Pacific Admissions Scheme (MAPAS).*”

*“Being part of MAPAS didn’t just mean that I had safe space to take a break from studies and chill. It also meant that I was part of a close-knit and supportive community. MAPAS House was a place that I could go to meet with student support advisors, gain access to tutors, and build connections with other students. The free food wasn’t bad either!*”

*“Throughout my time at FMHS I have been provided with many opportunities to progress in my own cultural journey and awareness. It has been amazing to be able to build self-confidence in my identity as a Pacific student at university.”*

## **Wana Leveanasiga**

**Fiji: Nakasaleka, Kadavu, Tavuki**

**Graduate: Hikitia Te Ora – Certificate in Health Sciences (CertHSc)**

**Student: Bachelor of Health Sciences**

*“The University of Auckland was an obvious choice for me due to its stellar reputation both nationally and internationally. I knew a degree from this University would be well respected and useful wherever I went.”*

*“I was particularly impressed by the reputation of Auckland Law School. I knew it was competitive to secure a spot in second year but this proved to me that the quality of education would be top-class.”*

*“I enrolled in a BA/LLB conjoint, double majoring in History and Classical Studies.”*

*“I liked the variety of papers you had to complete as part of a conjoint. Getting exposure to so many different aspects of law and history has helped me identify the type of person I am, the values I hold and my aspirations.”*

*“To put it more simply, I enjoyed the five years of dedicated learning. It was an enriching experience, and it opened my eyes to the world.”*

*“I loved my time at the University of Auckland, I got involved with many extracurricular activities, namely through being on the exec teams of various clubs. I met so many different people doing other degrees. Most importantly, I liked that there was a real balance between working hard and playing hard.”*

*“Some of the lecturers I have met have left a lasting impression on me.”*

## **Iqra Khan**

Graduate: Bachelor of Arts / Bachelor of Laws conjoint

Solicitor at Kiely Thompson Caisley



**One degree,  
unlimited potential  
at New Zealand's  
top-ranked Law  
school**

**Find out more**  
[auckland.ac.nz/lb](http://auckland.ac.nz/lb)

# Mātai Ture

## Law

When you embark on an undergraduate Law degree, you will gain skills and knowledge that equip you for a wide range of careers within the legal profession and beyond. You will develop analytical, communication and research skills. You will also build your understanding of legal ethics, professional responsibility and the role that law plays in society.

### Quick facts – LLB

**Full-time:** 4 years

**Points per degree:** 480

**Taught at:** City Campus

**Areas of specialisation:** Commercial Law, Criminal Law, Environmental Law, Family Law, Human Rights Law, International Law, Public Law or choose to generalise

**Application closing dates:**

LLB Part I: 8 December 2025

LLB Part II: 1 December 2025

**Classes start:** 2 March 2026

**Conjoint combinations:**

Arts, Commerce, Global Studies, Health Sciences, Music, Science

To be accepted into the Law programme, you must be accepted into LLB Part I and another degree programme of your choice, or you must be accepted into a Law conjoint programme. Students should consult an adviser at their nearest Student Hub.

[auckland.ac.nz/student-hubs](https://auckland.ac.nz/student-hubs)

### Why study with us

- You'll earn an internationally respected degree from Aotearoa New Zealand's leading Law school.\*
- We're globally ranked 55th by Subject.\* By virtue of our high-quality teaching, learning and research, we stand alongside the best in the world.
- The University is ranked Number 1 in New Zealand for graduate employability.\*\*
- We offer a broader range of Law electives than any other university in New Zealand.
- An exciting variety of conjoint degrees is open to you.
- The Davis Law Library provides the most comprehensive law collection in New Zealand.
- You will have opportunities for overseas study, internships and experiential learning.

\*QS World University Rankings by Subject, number one in NZ and 55th globally in 2024

\*\*QS World Rankings Graduate Employability, number one in NZ and 68th Worldwide in 2024

### Programme highlights

In the first year (Part I) you will study:

- LAW 121G Law and Society in Semester One
- LAW 131 Legal Method in Semester Two
- LAW 141 Legal Foundations in Semester Two
- Four non-Law courses for your other bachelors degree programme
- A Waipapa Taumata Rau core course from your other programme

Over the following years, for the LLB Parts II, III, and IV, you will:

- Study Criminal Law, Public Law, Law of Torts, Law of Contract, Land Law, Equity, Jurisprudence, Legal Ethics, Legal Writing and Legal Research
- Choose from a broad range of Law elective courses, or courses that focus on your chosen area of study, and have the opportunity to work with community groups

You must submit an application to be admitted to LLB Part II as the programme has limited spaces. Selection is based on your LawGPA, which is a specially calculated (non-standard) grade point average (GPA). It is based on your results in the three Law courses in Part I, plus your best 60 points from non-Law courses. To be eligible for selection, you must have passed the relevant Waipapa Taumata Rau course. Go online for more information on how the Law GPA is calculated.

[auckland.ac.nz/law-gpa](https://auckland.ac.nz/law-gpa)

Most students who gain entry to Part II continue to study towards a conjoint degree. There is considerable flexibility within conjoint degrees.

Our Undergraduate Targeted Admission Scheme (UTAS) reserves a number of places in the LLB Part II programme for eligible taurira Māori, Pacific students, and applicants from some equity groups.

Please note that the entry requirements for both Parts I and II may change each year.

### Choose your career

A Law degree will provide you with vital transferable skills and understanding, including knowledge of the law and its complications, a sense of justice and public responsibility, analytical, research and communication skills, and an ability to work under pressure.

In any given year, about half our graduates take up positions in New Zealand law firms, while the other half begin their careers in other professional organisations.

### Other pathways into the programme

If you don't have an entrance qualification but would like to study law, you can enrol in the University of Auckland Tertiary Foundation Certificate or the New Start university preparation course. (See pg. 34.)

### Interested in further study?

High-achieving students are invited into the LLB (Hons) at the end of their LLB Part II studies.

We also offer the following programmes as further study options:

Postgraduate Certificate in Intellectual Property (PGCertIP)

Postgraduate Certificate in Law (PGCertLaw)

Master of Intellectual Property (MIP)

Master of Laws (LLM)

Master of Legal Studies (MLS)

Master of Taxation Studies (MTaxS)

Doctor of Philosophy (PhD)

# Mātātuhi Rongoā

## Medical Imaging

The Bachelor of Medical Imaging (Honours) at the University of Auckland is the first undergraduate Medical Imaging programme to be offered by a university in New Zealand. It's also the only honours degree in Medical Imaging in the country.

### Quick facts – BMedImag(Hons)

**Full-time:** 4 years

**Points per degree:** 480

**Taught at:** Grafton Campus

**Application closing date:** 1 July in your first year of study

**Classes start:** 2 March 2026

The selection criteria are currently under review. The information here is correct at the time of publication. Please monitor the online programme page for the most up-to-date entry requirements.

[auckland.ac.nz/bmedimag-hons](http://auckland.ac.nz/bmedimag-hons)

### Why study with us

- You'll earn your Medical Imaging degree at New Zealand's top university, according to both QS and THE rankings.
- The blend of academic and clinical learning is research-led, and reflected in extensive hands-on experience throughout the programme.
- Abundant support from practising Medical Imaging Technologists deepens the programme's focus and authenticity.

*Extensive  
hands-on  
experience and  
support from  
expert MITs*

**Find out more**  
[auckland.ac.nz/fmhs](http://auckland.ac.nz/fmhs)

- You'll develop your own reflective practice. You'll also learn how to engage effectively with colleagues across the many disciplines that work together in healthcare environments.
- As a graduate, you'll be eligible for registration with the New Zealand Medical Radiation Technologists Board (MRTB).
- Your interdisciplinary, practice-based learning will pay off right from the start as you contribute confidently in workplace settings.

### Programme highlights

In your first year, you will take core health-related courses in the University of Auckland BSc or the University of Otago Health Sciences First Year.

In subsequent years, you'll complete courses in radiographic positioning and image acquisition, Medical Imaging principles and technology, sectional imaging anatomy and pathology, image optimisation and evaluation, patient care and safety, professional evidence-based practice, and specialised imaging.

In your Honours year you will complete postgraduate courses in Image Evaluation and Computed Tomography and a research project to prepare you for pathways to higher qualifications.

You'll gain clinical experience in simulation labs, hospitals and outpatient radiology facilities. Your final-year research project will consolidate and demonstrate your analytical and research skills.

### Admission schemes

#### Māori and Pacific Admission Scheme (MAPAS)

The Māori and Pacific Admission Scheme provides admission, academic and pastoral support for Māori and Indigenous Pacific students. This scheme is an integral part of Vision 20:20 – a faculty initiative to increase the number of Māori and Pacific professionals in the health workforce.

[auckland.ac.nz/fmhs/mapas](http://auckland.ac.nz/fmhs/mapas)

#### Regional Rural Admission Scheme (RRAS)

Through our Regional Rural Admission Scheme

(RRAS) we want to create pathways for future students to train and return to their rural or regional areas to work where they can use their education and skills. We offer places in our Medical Imaging programme for students of regional or rural origin to ensure equitable educational access and ultimately an equitable workforce.

[auckland.ac.nz/fmhs/rras](http://auckland.ac.nz/fmhs/rras)

### Choose your career

MITs can work in a variety of roles in either public hospitals or private radiology practices. Most will begin their career in general radiographic imaging (x-ray), with additional opportunities to work in computed tomography (CT), angiography and mammography.

MITs may subsequently choose to pursue additional postgraduate studies to practise in specialisations such as magnetic resonance imaging (MRI), ultrasound and nuclear medicine. With the rapid advancement of technology, the role of the MIT is ever changing.

Medical Imaging is a patient-centred profession. MITs act as patient advocates, displaying a high level of professionalism and functioning as part of a multidisciplinary team. They're required to perform high-quality diagnostic imaging procedures and ensure holistic patient care.

Other career opportunities include employment as a clinical application specialist with an equipment vendor. There are management positions in Medical Imaging departments. MITs also pursue academic careers in teaching and research.

### Interested in further study?

Postgraduate study is available for MITs who wish to broaden their knowledge in Medical Imaging. Note that postgraduate qualifications are required for professional registration purposes in the imaging technology specialties of MRI, ultrasound and nuclear medicine.

Those interested in advanced study or research can continue on to masters and PhD level qualifications in Medical Imaging.



*“My drive and compassion to help the vulnerable was very empowering. The thought of genuinely making a difference in someone’s life when they need it the most really helped me to face obstacles and make sacrifices, which anyone in healthcare would need to do.”*

*“Crucial to our medical imaging success were our patient-based simulations at Greenlane Clinical Centre. There we could translate our theoretical knowledge into a real-world setting. We were also extremely fortunate to use the Human Anatomy Lab, which gave us an underlying appreciation of the musculoskeletal system.”*

*“After becoming a radiographer, I have now transitioned into a more specialised area of medical imaging – cardiac ultrasound. I’m currently training at Auckland City Hospital to become a Cardiac Sonographer.”*

*“Alongside my clinical work, I progressed into a graduate research assistant role and was fortunate to join the Auckland Bioengineering Institute Cardiac Modelling team at UoA. I have published my first academic paper/abstract for the European Society of Cardiology: ‘Systematic Comparison between Right-Ventricular 3D-Echocardiography and Cardiac MRI.’”*

## **Bhavya Arora**

Graduate: Bachelor of Science  
(Biomedical Science)

Graduate: Bachelor of Medical  
Imaging (Honours) First Class

*“When I was young, I had the privilege of watching my parents graduate. I fondly remember trying on their graduation gowns with my older brother. Their academic success instilled in me a belief that I too could attend university.*”

*“The Māori and Pacific Admissions Scheme (MAPAS) has been incredibly supportive as I navigate my cultural identity, studies and engagement with fellow Māori and Pacific students. They have actively promoted my educational journey and well-being, ensuring a holistic approach to my development.*”

*“MAPAS have created a great learning environment, consistently supporting me in many ways, including accommodation, advisory assistance, tutorials, meals, networking opportunities, and resources.*”

*“My most valuable experiences have been the hospital placements, observing doctors with their patients and interacting with them myself. These experiences have reinforced my understanding not only of medicine, but also of the healing that can come from the caring relationship between a doctor and their patient. We MAPAS students have a special quality, a cultural lens that helps us to connect with our own people and enhance their care.*”

*“One component I’ve really enjoyed is the opportunity to work alongside professionals in their realm of speciality, especially surgery. It’s been an exciting privilege to assist surgeons in theatre. I’m grateful to have had this rare hands-on experience in such a niche area.*”

*“One of the most engaging things about my studies is the blend of theoretical learning and practical application. While the theoretical content can be challenging, I’ve found it incredibly interesting witnessing academic study come to life during my practical placements.”*

## **Tatiana Faaiu**

**Upolu, Samoa: Satalo, Falealili;  
Sapunaoa; Taelefaga, Fagaloa; Saluafata**

**Student: Bachelor of Medicine and  
Bachelor of Surgery**





# Mātai Rongoā

## Medicine

A rewarding, challenging and exciting career in Medicine awaits you. The Bachelor of Medicine and Bachelor of Surgery (MBChB) provides the medical knowledge, clinical experience and research skills needed in any field of Medicine. You'll also develop personal and professional attributes that will assist you in your career. You'll engage with Hauora Māori and population health issues and learn by interacting with patients from diverse cultures. You'll also experience urban and rural practice and develop skills for working effectively with colleagues in other healthcare professions.

### Quick facts – MBChB

**Full-time:** 6 years

**Points per degree:** 720

**Taught at:** Grafton Campus and at clinical sites throughout the upper North Island (Travel outside Auckland is mandatory.)

**Application closing date:** 1 July in your first year of study

**Classes start:** 2 March 2026

Selection criteria for the MBChB are currently under review. The information here is correct at the time of publication. Please monitor the online programme page for the most up-to-date entry requirements.

[auckland.ac.nz/mbchb](http://auckland.ac.nz/mbchb)

### Why study with us

- The MBChB is accredited by the Australian Medical Council on behalf of the Medical Council of New Zealand.
- We strongly emphasise medical sciences, clinical, personal, professional and communication skills, the health of Māori and population health.
- We have an international reputation for research and innovation.
- We offer unrivalled access to clinical environments, thanks to our close relationship with Te Whatu Ora – Health New Zealand and general practices.
- We strongly promote rural, regional and community-based health through our network of clinical campuses and sites in the mid and upper North Island.
- We offer opportunities for overseas study, internships and experiential learning.

### Programme highlights

During Part I, you will complete core health-related courses as part of either the Bachelor of Health Sciences or the Bachelor of Science (Biomedical Science).

In Part II and beyond you will:

- Study Medicine in five broad domains:
  - Applied Science for Medicine
  - Clinical and Communication Skills
  - Hauora Māori
  - Personal and Professional Skills
  - Population Health
- Gain opportunities for inter-professional learning
- Undertake the fundamentals of clinical practice – multidisciplinary modules on systems in the human body
- Acquire clinical and professional skills from the start
- From Part IV, experience clinical practice in context, spending at least 33 weeks per year rotating through the various medical disciplines at different clinical and community sites throughout the mid/upper North Island
- Be part of year-long cohorts at sites within and outside of Auckland
- Experience practicums in hospital wards, outpatient clinics and the community – and play a part in caring for patients with diverse health problems
- Have the opportunity to undertake a variety of rural and regional year-long placements.
- Choose some of your own clinical learning options in Parts III, V and VI
- Spend your final year preparing for the workforce as a trainee intern

*Gain  
knowledge and  
clinical experience  
for any field of  
medicine*

**Find out more**  
[auckland.ac.nz/fmhs](http://auckland.ac.nz/fmhs)

## Choose your career

When you complete your Bachelor of Medicine and Bachelor of Surgery you will be eligible to apply for provisional registration with the Medical Council of New Zealand. You would then undertake two years of pre-vocational training. After that, you might opt for primary healthcare and train in general practice, or choose from a range of secondary care training pathways. These include emergency medicine, medical specialities, geriatric medicine, obstetrics and gynaecology, oncology, paediatrics, pathology, psychiatry, public health, radiology and surgery. There are also opportunities to pursue a career in medical research or education.

## Interested in further study?

Students interested in research may defer clinical MBChB studies for one year after Part III, IV or V and pursue a supervised research project of their choice to qualify for a Bachelor of Medical Science (Honours) (BMedSc(Hons)) degree before returning to complete their clinical training and graduating with both qualifications. In addition, the faculty offers a wide range of postgraduate programmes for doctors wishing to further their interests, up to Doctor of Medicine and PhD.

## Admission Schemes

### Māori and Pacific Admission Scheme (MAPAS)

The Māori and Pacific Admission Scheme provides admission, academic and pastoral support for Māori and Indigenous Pacific students. This scheme is an integral part of Vision 20:20 – a faculty initiative to increase the number of Māori and Pacific professionals in the health workforce.

[auckland.ac.nz/fmhs/mapas](http://auckland.ac.nz/fmhs/mapas)

### Regional Rural Admission Scheme (RRAS)

Through our Regional Rural Admission Scheme we want to create pathways for future students to train and return to their rural or regional areas to work where they can use their education and skills. We offer places in our Medicine programme for students of regional or rural origin to ensure equitable educational access and ultimately an equitable workforce.

[auckland.ac.nz/fmhs/rras](http://auckland.ac.nz/fmhs/rras)





***“I work as a violin tutor at Sistema Aotearoa, a music and social development programme based in Ōtara, South Auckland. My style of teaching is inspired by how I was taught violin at the School of Music.***

*“When my parents came to New Zealand from Tonga, music was all they had. Music brings my family together and it’s a common ground for everyone. That’s why I chose to follow music as a career.*

*“Throughout my degree, I studied chamber music, conducting, choir, brass ensemble, string ensemble, and orchestra, in addition to solo lessons. I was also very lucky to make life-long friends through baroque studies and chamber music groups.*

*“The lecturers and tutors in the School of Music are all very friendly. I’m so grateful for the support they offered.*

*“During my studies, I had the incredible experience of conducting musicians of the New Zealand Symphony Orchestra as part of the Pasifika Conductors Masterclass. We received guidance from an internationally renowned conductor. What stood out to me was how the musicians were so helpful and down to earth. It was the experience of a lifetime.*

*“If you’re thinking about studying Music at the University of Auckland, just go for it!”*

## **Anne Maroussia Filimoehala**

**Graduate: Bachelor of Music (Honours)**

**Violin tutor at Sistema Aotearoa and 2023  
NZSO Conducting Fellow**



# Mātai Puoro

## Music

Music is the soundtrack to our lives. It tells our stories. It inspires, moves and unites us. Studying music at Te Whare o ngā Pūkōrero Pūoro School of Music will support the growth of your skills and understanding of Composition, Jazz, Music Education and Conducting, Musicology, Performance, or Songcraft and Production. You'll be taught by some of the leading music scholars in the country, ensuring you graduate with the skills you need to kickstart your journey in the creative industries and beyond.

### Quick facts – BMus

**Full-time:** 3 years

**Points per degree:** 360

**Taught at:** City Campus

**Application closing date:**

8 December 2025

(Late applications will be considered if places are available.)

**Classes start:**

Semester One: 2 March 2026

Semester Two: 20 July 2026

**Conjoint options:**

Arts, Commerce, Engineering (Honours), Law, Science

### Why study with us

- We're a committed team of professionally active staff, offering tuition of the highest quality.
- You'll access collaborative performance opportunities across an exciting variety of chamber music groups, jazz combos and contemporary bands, as well as larger jazz, choral and orchestral ensembles.
- We maintain strong links with the Auckland Philharmonia, Chamber Music New Zealand, NZTrio, CJC Creative Jazz Club Aotearoa and an expanding network of professional and community music organisations.
- Our global partnerships also open rich opportunities to learn from internationally renowned composers, performers and music scholars.
- We house the largest collection of historically significant keyboard instruments in the Southern Hemisphere, from 17th century keyboards through to rare historic synthesizers.
- Our specialist music resources combine with excellent practice, study and performance facilities to create a holistic learning environment.
- We offer opportunities for overseas study, industry internships and experiential learning.

### Programme highlights

The Bachelor of Music programme offers a range of study options, each focused on thinking, making and doing across the focus areas of Composition, Jazz, Music Education, Musicology, Performance, and Songcraft and Production.

The degree provides foundational techniques and skills in music training and understanding, encompassing music phenomena, music theory and analysis, music pedagogy and conducting, historical studies, individual, group and community performance skills, inclusive entrepreneurship and creative studio for everyone enrolled.

As you progress through the degree, you will elect your own pathway to:

- Develop the unique techniques and skills of your discipline
- Broaden your knowledge of history and culture
- Engage in deeper collaborative experiences that prepare you for a sustained practice beyond university

All programmes include a Waipapa Taumata Rau core course, which should be completed in your first year. It focuses on core knowledge relevant to our faculty, the significance of place-based knowledge, and Te Tiriti o Waitangi.

[auckland.ac.nz/wtr-course](https://auckland.ac.nz/wtr-course)

### Choose your career

Our graduates find employment around the world. Some alumni have achieved international success for their music. Others hold sought-after roles in orchestras, arts organisations, licensing agencies and recording studios. Some are creative entrepreneurs and independent practitioners with successful freelance careers in production, film and video game composition, teaching or sessional playing.

### Interested in further study?

A number of pathways can develop your skills at a postgraduate level, including the Bachelor of Music (Honours) (BMus(Hons)) or the Postgraduate Diploma in Music (PGDipMus), a Master of Music (MMus) and a PhD with or without Scholarly Creative Work.

### How do I apply?

Scan the QR code or follow the link below to find out how to apply for the BMus or one of five Music conjoint degree programmes, and prepare your audition.

[auckland.ac.nz/bmus](https://auckland.ac.nz/bmus)



*Follow your  
passion at NZ's  
No.1 university for  
Performing Arts\**

**Find out more**  
[auckland.ac.nz/bmus](https://auckland.ac.nz/bmus)

\* QS World University Rankings by Subject 2024

# Mātai Tapuhi

## Nursing

Our Bachelor of Nursing (BNurs) programme is excellent professional groundwork for tomorrow's nurses. You'll enter the workforce equipped with unrivalled clinical training, broad learning experiences and a strong record of practical clinical placements.

### Quick facts – BNurs

**Full-time:** 3 years

**Points per degree:** 360

**Taught at:** Grafton Campus (some first-year classes held at City Campus)

**Application closing date:**

8 December 2025

**Classes start:** 2 March 2026

The structure of the BNurs is changing. Please monitor the online programme page for the most up-to-date details.

[auckland.ac.nz/bnurs](http://auckland.ac.nz/bnurs)

### Why study with us

- Our programme integrates academic and clinical learning experiences throughout the three-years.
- Our school is embedded in an inter-professional, evidence based, academic environment.
- The School of Nursing has strong partnerships with clinical partners throughout Tāmaki Makaurau Auckland, and our graduates are highly sought after for employment.
- Dedicated lecturers who are registered health professionals will offer you professional expertise and support.

### Programme highlights

- In first year, you will develop the foundational capabilities required to be a student and registered nurse. These include knowledge in Biomedical Sciences, Population Health, Behaviour, Health and Development, and Nursing in Practice.
- All programmes include a Waipapa Taumata Rau core course that should be completed in your first year. It focuses on core knowledge relevant to our faculty, the significance of place-based knowledge, and Te Tiriti o Waitangi. [auckland.ac.nz/wtr-course](http://auckland.ac.nz/wtr-course)
- In later years, you'll study such topics as mental health nursing, the health of older people, family health care, Māori and Pacific health, medical and surgical nursing, and leadership in nursing.
- Robust clinical experience will underpin your growing knowledge.

### Admission schemes

- The Māori and Pacific Admission Scheme (MAPAS) provides admission, academic and pastoral support for Māori and Indigenous Pacific students. This scheme is an integral part of Vision 20:20 – a faculty initiative to increase the number of Māori and Pacific professionals in the health workforce.
- Applicants with New Zealand Māori and/or indigenous Pacific ancestry can also apply through MAPAS to enter the Hikitia Te Ora – Certificate in Health Sciences programme.

[auckland.ac.nz/fmhs/mapas](http://auckland.ac.nz/fmhs/mapas)

### Choose your career

Nursing offers a variety of different career settings, practice specialities and roles. You may find yourself working as a community nurse, mental health nurse, nurse educator, nurse manager, child health nurse or specialist nurse working in older people's health.

### Interested in further study?

There are various postgraduate options for continuing your professional development. These include:

- Postgraduate Certificate or Diploma in Health Sciences (PGCertHSc or PGDipHSc)
- Bachelor of Nursing (Honours) (BNurs(Hons))
- Master of Nursing (MNurs)
- Doctor of Philosophy (PhD)

[auckland.ac.nz/bnurs](http://auckland.ac.nz/bnurs)

*Great learning opportunities, including real-world clinical experience*

*Find out more*  
[auckland.ac.nz/fmhs](http://auckland.ac.nz/fmhs)



***“I knew I wanted to help people in a clinical setting as I loved my sciences at school and I loved working with people. Since my first clinical placements, I’ve discovered that a nursing role is definitely where I belong.”***

*“The support that I’ve received from my small cohort of peers and the teaching staff has been phenomenal – and crucial in helping me to overcome the challenges my degree has presented thus far.*

*“I love the range of learning opportunities and environments provided right from our first year. There are standard lectures and tutorials, lab sessions, and clinical skills sessions in simulated hospital rooms. By the end of my first year we were released into hospital wards and given a taste of what it would be like to work in a clinical setting. This was the most immersive and productive learning environment I’ve ever experienced.*

*“If nursing is for you, I recommend studying it at the University of Auckland. Our yearly cohort is around 100 students. This makes it easier for our lecturers to be really involved and supportive with our learning.*

*“The small cohort also makes it easy to form meaningful friendships with your peers. These people will laugh, cry, suffer, and celebrate with you as you work through your study together.*

*“I was a member of the Nursing at Auckland University Students Association (NASA) in 2022 and in the NASA exec team in 2023. Their social events allowed me to form connections and friendships with nursing students from all three years of the BNurs programme, and their tutorials assisted my understanding of course content.*

*“I’ve found that Nursing can be academically, mentally, and emotionally challenging at times. However, the chance to apply my knowledge and meaningfully impact people’s lives during placements keeps reminding me why I’m pursuing nursing.”*

## **Eugene Odiaz**

**Graduate: Bachelor of Nursing**

*“When studying for my BOptom I particularly enjoyed gaining real world experience by seeing patients in the University Optometry Clinic. The kind, dedicated, and knowledgeable supervisors created a safe space where we consolidated our clinical skills and learnt how to develop a holistic and tailored approach to managing each patients’ care.”*

*“Not only are the facilities at FMHS world class. Both academic and non-academic staff are so generous with their time, knowledge, and resources. It’s a privilege to work in a such a supportive environment. It has really elevated my experience.*

*“We learnt how to use state of the art equipment and were taught about the latest developments and research in the field. I obtained valuable experience and a broad skill set that prepared me to practise confidently as an optometrist.*

*“Being an optometrist entails much more than prescribing for vision correction with spectacles or contact lenses. The role of an optometrist as a healthcare professional is vast. It involves comprehensive eye health checks, monitoring for the presence or progression of disease, and managing conditions that may need prescriptions.*

*“After graduating and practicing as an optometrist, I realised how much I missed and enjoyed the continuous development of being a student. This spurred me to return as a doctoral student in optometry.*

*“I’m now studying eye growth in zebrafish, specifically with regard to short-sightedness (myopia). We hope that zebrafish can provide us with some insight into the mechanisms of myopia development and inform future research into short-sightedness.”*

## Aan Chu

Graduate: Bachelor of Arts and Bachelor of Optometry

Student: PhD candidate





# Mātai Whatu, Pūtaiao Kitea

## Optometry and Vision Science

Become an optometrist and play a crucial role in primary healthcare. Examine people's eyes, diagnose vision problems, and provide treatment. The Bachelor of Optometry (BOptom) encompasses both Clinical Optometry and Vision Science. It includes study of the basic physical and life sciences that relate to the visual system.

### Quick facts – BOptom

**Full-time:** 5 years

**Points per degree:** 600

**Taught at:** Grafton Campus, with placements at external locations

**Application closing date:** 1 July in your first year of study

**Classes start:** 2 March 2026

Selection criteria for the BOptom are currently under review. The information here is correct at the time of publication. Please monitor the University website and programme page for the most up-to-date entry requirements.

[auckland.ac.nz/boptom](http://auckland.ac.nz/boptom)

### Why study with us

- We offer New Zealand's only Bachelor of Optometry degree.
- Once you graduate and are registered as an optometrist, you'll be fully qualified to diagnose and treat eye diseases in New Zealand or Australia.
- We'll foster your communication, empathy and problem-solving skills, particularly with children, the elderly and the partially sighted.
- Clinical and business skills go hand in hand. We'll prepare you to work in the public sector but also teach you how to manage your own practice.
- You'll have the opportunity to complete your degree with honours.

### Programme highlights

In your first year, you will take core health-related courses in the University of Auckland BSc or the University of Otago Health Sciences First Year.

In your second and third years, you'll take courses in life sciences, vision science, population health, basic optometric sciences and practice. You'll also pursue various aspects of clinical optometry.

In your fourth and fifth years, you'll learn about diseases of the eye and their treatment, contact lens practice, advanced clinical optometry, and optometry for special populations. You will also undertake a research project and gain practical experience in examining and treating patients. You'll grow your experience both in our public clinic and during external placements.

[auckland.ac.nz/boptom](http://auckland.ac.nz/boptom)

### Choose your career

The majority of optometrists enter private practice. This offers regular hours and the freedom to choose where to live and work. Optometrists can also practise in hospitals and clinics. Some pursue careers in industry or research.

### Admission schemes

#### Māori and Pacific Admission Scheme (MAPAS)

The Māori and Pacific Admission Scheme provides admission, academic and pastoral support for Māori and Indigenous Pacific students. This scheme is an integral part of Vision 20:20 – a faculty initiative to increase the number of Māori and Pacific professionals in the health workforce.

[auckland.ac.nz/fmhs/mapas](http://auckland.ac.nz/fmhs/mapas)

#### Regional Rural Admission Scheme (RRAS)

Through our Regional Rural Admission Scheme we want to create pathways for future students to train and return to their rural or regional areas to work where they can use their education and skills. We offer places in our Optometry programme for students of regional or rural origin to ensure equitable educational access and ultimately an equitable workforce.

[auckland.ac.nz/fmhs/rras](http://auckland.ac.nz/fmhs/rras)

### Interested in further study?

The optometry profession needs practitioners with research skills and experience. The main postgraduate programmes are the Postgraduate Diploma in Health Sciences (PGDipHSc), the Master of Health Sciences (MHSc) and the Doctor of Philosophy (PhD).

### Scholarships

For information about prizes and scholarships, including financial support for students enrolling by way of the Māori and Pacific Admissions Scheme (MAPAS), please search for 'Optometry' online.

[auckland.ac.nz/scholarships](http://auckland.ac.nz/scholarships)

*Registration  
to practise as  
an optometrist in  
New Zealand or  
Australia*

*Find out more*  
[auckland.ac.nz/fmhs](http://auckland.ac.nz/fmhs)

# Mātai Whare Rongoā

## Pharmacy

Become a pharmacist. Support personal and community health through better development, management and use of medicines. You could work in community or hospital pharmacies, medical practices or a range of healthcare, government, pharmaceutical industry or research settings. If you want to be a part of this varied and rewarding health profession, come and study with us.

### Quick facts – BPharm

**Full-time:** 4 years

**Points per degree:** 480

**Taught at:** Grafton Campus, with clinical placements in Auckland and elsewhere in New Zealand

**Application closing date:** 1 July in your first year of study

**Classes start:** 2 March 2026

Selection criteria for the BPharm are currently under review. The information here is correct at the time of publication. Please monitor the University website and programme page for the most up-to-date entry requirements.

[auckland.ac.nz/bpharm](http://auckland.ac.nz/bpharm)

### Why study with us

- Pharmacy is a great option if you wish to enhance patients' wellbeing in a dynamic and highly collaborative environment.
- We provide a blend of real-world and academic learning within integrated course modules.
- You'll enjoy many health professional experiences in diverse clinical and community health settings.
- You'll also benefit from simulation labs and workshops in our model pharmacy teaching suite and world-class laboratories.
- We emphasise patient-centred practice and inter-professional relationship building within healthcare teams.
- You'll enter the profession at a time when pharmacists are delivering new services in collaboration with other experts.

### Programme highlights

- Our programme puts patients at the heart of your learning. You'll gain ten weeks of experience in a range of pharmacy and other health settings. You'll also learn through lectures, interactive media, laboratory classes, clinical case workshops, tutorials, and simulations.
- You'll study how medicines are developed, how they work, and how pharmacists help people to use them safely and effectively.
- Throughout the programme, your learning will encompass population health, social science, pharmacology, pharmacy practice, pharmacotherapy and pharmaceutical science.
- In addition, the programme features group-based research inquiry work. It focuses on evidence-based practice in clinical cases.

### Admission Schemes

#### Māori and Pacific Admission Scheme (MAPAS)

The Māori and Pacific Admission Scheme provides admission, academic and pastoral support for Māori and Indigenous Pacific students. This scheme is an integral part of Vision 20:20 – a faculty initiative to increase the number of Māori and Pacific professionals in the health workforce.

The Faculty of Medical and Health Sciences offers the He Rau Aroha Scholarship for the Bachelor of Pharmacy – up to \$10,000 annually for up to two students.

[auckland.ac.nz/fmhs/mapas](http://auckland.ac.nz/fmhs/mapas)

#### Regional Rural Admission Scheme (RRAS)

Through our Regional Rural Admission Scheme we want to create pathways for future students to train and return to their rural or regional areas to work where they can use their education and skills. We offer places in our Pharmacy programme for students of regional or rural origin to ensure equitable educational access and ultimately an equitable workforce.

[auckland.ac.nz/fmhs/rras](http://auckland.ac.nz/fmhs/rras)

### Interested in further study?

The BPharm(Hons) is another option for further indepth study. Application is open to students already enrolled in the BPharm, Year 3. If interested, you will apply to undertake the BPharm(Hons) during your final year of study. If you are accepted, your Years 1–3 BPharm will be transferred across to your BPharm(Hons). Fifteen places are available each year.

### Choose your career

BPharm graduates work in a range of health-based industries related to the manufacture, development and provision of medicines, as well as industries such as medical publishing or pharmaceutical marketing.

Potential roles and careers include community pharmacist, health sector manager, hospital pharmacist, general practice pharmacist, pharmaceutical researcher, pharmaceutical writer, medicines quality control pharmacist, medicines regulator, and prescribing adviser.

[auckland.ac.nz/bpharm](http://auckland.ac.nz/bpharm)

*Prepare for  
a varied and  
rewarding health  
profession*

*Find out more*  
[auckland.ac.nz/fmhs](http://auckland.ac.nz/fmhs)



*“The BPharm appealed to me as an incredibly versatile degree that married my interests in chemistry, biology, patient care and social science. BPharm graduates work in a range of industries as the programme relates to the manufacture, prescription and provision of medicines.*”

*“The thing I like most about the BPharm programme is the range of subjects taught, including population medicine, social science, pharmacology, pharmaceuticals, law and ethics. Many of our guest lecturers are at the forefront of research and practice.*”

*“My degree has prepared me incredibly well for entering the workforce through exciting experiential learning placements and a strong clinical and professional skills component. I particularly enjoyed a two-week placement with the Pharmacy Mental Health team for Waitematā DHB. I visited many sites where mental health services are delivered by pharmacists. I was able to develop my skills in a unique and interesting environment. It was an eye-opening experience, which involved learning from a wide range of people in the workforce and applying what I had learnt in class to real-life scenarios.*”

*“I also had the opportunity to undertake a Summer Research Scholarship investigating formulations of a novel range of anti-cancer drugs. I developed skills and am now undertaking my own research.”*

## **Ben Moloney**

**Graduate: Bachelor of Pharmacy (BPharm)**

**Student: PhD in the School of Pharmacy**

*“The Property degree is so connected to industry. The staff have really taken the time to build relationships, so that the students can benefit.”*

*“This industry involvement was so useful to me as a student. I was able to see what the day-to-day of a future career in property would look like. That helped me to figure out what I wanted to do within the industry. The connections also meant that we had more opportunities for part-time roles, internships and other experience in the industry before we left university.”*

*“At the end of my fourth year, I was awarded the Goodman Scholarship at the Business School. This led to an internship while I was studying, and then to a full-time role when I graduated. I currently work in the Investment team at Goodman, one of my short-term career goals.”*

## **Jordan Parratt**

**Graduate: Bachelor of Property/Bachelor of Laws conjoint**

**Investment Analyst, Goodman**



# Mātai Rawa

## Property

The Bachelor of Property (BProp) is a specialist degree that equips learners with the skills, industry mentors, and experience for a range of careers. With our strong links across the sector, you'll develop professional connections right from the start. You'll grow through the BProp's successful buddy programme and many industry networking opportunities.

### Quick facts – BProp

**Full-time:** 3 years

**Points per degree:** 360

**Taught at:** City Campus

**Application closing date:**  
8 December 2025

**Classes start:**  
Semester One: 2 March 2026  
Semester Two: 20 July 2026

**Conjoint combination:**  
Commerce

### Why study with us

- We offer real-world experience, alongside high-quality, research-led education.
- You'll connect with property professionals through networking events and buddy programmes that link students with industry mentors.
- Our graduates qualify for membership of the Valuers Registration Board, Property Institute of New Zealand, Real Estate Institute of New Zealand, and Royal Institution of Chartered Surveyors.
- We're in the top 1% of the world's business schools, with our much-envied Triple Crown accreditation. This recognises our high academic standards and ensures global recognition of your degree.
- You can enjoy a range of fun, industry-focused clubs and organisations providing opportunities for personal skills development to enhance your employability

### Programme highlights

You'll begin with our innovative first-year Business core – a suite of courses with interactive learning that includes workshops where you solve real-world business problems. You'll also complete one introductory course in Property.

All programmes include a Waipapa Taumata Rau core course that should be completed in your first year. It focuses on core knowledge relevant to our faculty, the significance of place-based knowledge, and Te Tiriti o Waitangi.

#### **auckland.ac.nz/wtr-course**

Your second and third years will broaden your horizons with more specialised property courses. Topics include valuation, finance and investment, economics, law, land use planning and controls, marketing, management, and building construction.

In your third year, your advanced coursework in property will be complemented by a capstone experience. Your capstone will showcase all your skills and knowledge in a practical context.

### Choose your career

Career options for BProp graduates are numerous. Opportunities include managing property portfolios for local and international corporations; managing residential, commercial and industrial property; property development, property marketing, leasing, and sales; and becoming a registered valuer.

### Links to industry

You'll join a small, specialised cohort of students who work closely with the property industry. You will:

- Attend lectures and workshops by professionals currently working in property
- Meet and network with industry representatives
- Engage with real-world projects and clients
- Participate in a buddy programme with an industry mentor

### Other pathways into the programme

If you're over 20 and don't have an entrance qualification but would like to study Property, you can enrol in the Tertiary Foundation Certificate (TFC) or New Start programme (pg. 34). Other pathways include our Undergraduate Targeted Admissions Scheme.

### Interested in further study?

Opportunities to study Property at an advanced level include:

- Master of Property Practice (MPropPrac) (Available to applicants without a previous qualification in this subject area.)
- Doctor of Philosophy (PhD)

*Prepare for  
a career in the  
dynamic and  
diverse property  
sector*

**Find out more**  
[auckland.ac.nz/bprop](https://auckland.ac.nz/bprop)

# Pūtaiao

## Science

If you have a mind for science and you're keen to keep your options open, then the Bachelor of Science (BSc) is the degree for you. Are you keen to incorporate different areas of interest and expertise in your programme? With undergraduate majors and specialisations in a wide range of subjects, a BSc will allow just that. A BSc will expose you to cutting-edge technologies and provide a gateway to independent research. We also emphasise transferable skills that multiply your employment opportunities. Throughout your time with us, you'll be taught by deeply knowledgeable scientists, many of whom are leaders in their fields.

### Quick facts – BSc

**Full-time:** 3 years

**Points per degree:** 360

**Taught at:**

City and Grafton Campuses

**Application closing date:**

8 December 2025 (Late applications will be considered if places are available.)

**Classes start:**

Semester One: 2 March 2026

Semester Two: 20 July 2026

**Conjoint combinations:**

Arts, Commerce, Design, Engineering (Honours), Fine Arts, Global Studies, Health Sciences, Law, Music

### Why study with us

- We maintain state-of-the-art facilities, including our Science Centre and award-winning undergraduate Chemistry laboratory.
- Our programmes are broad and flexible. They allow you to follow your interests and keep your options open as you try different courses.
- We offer opportunities for overseas study, internships and experiential learning.
- We are home to the Science Scholars and Tuākana in Science programmes.

[auckland.ac.nz/science-scholars](https://auckland.ac.nz/science-scholars)

[auckland.ac.nz/tuakana-science](https://auckland.ac.nz/tuakana-science)

### Programme highlights

If you have a mind for science and you're keen to keep your options open, then the BSc's breadth and flexibility will appeal. With a wide array of undergraduate majors to choose from, you can incorporate different areas of interest and expertise. To begin with, in your first year you can enrol in eight courses in up to three subject areas to discover your strengths and interests.

All programmes include a Waipapa Taumata Rau core course that should be completed in your first year. It focuses on core knowledge relevant to our faculty, the significance of place-based knowledge, and Te Tiriti o Waitangi.

**[auckland.ac.nz/wtr-course](https://auckland.ac.nz/wtr-course)**

We strongly emphasise transferable skills to improve your employment opportunities. Our programme will also expose you to cutting-edge technologies and provide a gateway to independent research. You'll be taught by knowledgeable scientists, many of whom are world experts.

In your final year, you'll complete a capstone course. This is a great opportunity to apply and showcase all your learning as you address a real-world problem in your chosen subject area.

*Choose from  
a wide range  
of subjects to  
customise your  
degree*

**Find out more**  
[auckland.ac.nz/science](https://auckland.ac.nz/science)

\* [science.auckland.ac.nz/excellence](https://science.auckland.ac.nz/excellence)



*“Choosing my major was hard but I have always had an interest in psychology and wanted this to be the main focus of my degree. I love to learn about why people do the things they do – and how we can use this knowledge to understand everyday behaviours. Eventually I’d love to become a clinical psychologist or psychiatrist.”*

*“I’ve really enjoyed my assignments. In PSYCH 108 we wrote an essay about an activity or environment that allows us to flourish as an individual. It allowed me to discuss a subject I was passionate about. I really enjoyed this assignment and put a lot of time and effort into it. I also love the selection of PSYCH papers you are able to choose from in stage 2 and 3 of the programme.”*

*“I am of NZ European and Tongan descent, so last semester I had the opportunity to be a part of an amazing programme called Leadership Through Learning. It’s a leadership development programme for students of Māori and Pacific background across all disciplines at the University. I met some amazing people and developed many leadership skills. I also learnt about the cultures that make up the indigenous community at the University, which I now feel part of. The amazing coordinators and tutors in this programme become your whānau at the University, creating a space that brings a sense of belonging and aroha. I would highly recommend it to anyone who has the opportunity to be a part of it.”*

## **Jessie Houston**

**Student: Bachelor of Science in Psychology**

**Leadership Through Learning**



[auckland.ac.nz/  
leadershipthroughlearning](https://auckland.ac.nz/leadershipthroughlearning)

*“I’ve always had a passion for the environment; growing up with hobbies that constantly had me in the outdoors made me want to learn about and explore the physical world around me. The more I progressed in my high-school studies, the more I found my passion for technology, problem solving and understanding the role that humans play within the environment. Studying both Geographic Information Science and Environmental Science at the University of Auckland perfectly blended these ideas together.*”

*“I love that the programme is heavily focused on teaching you practical skills and giving you the opportunity to communicate your learning through various modes, not just traditional assignment styles. My studies have made me feel more confident about pursuing jobs after graduation, with a more solid foundation of understanding topics and software. I also appreciate the range of topics we cover throughout the degree, as it really gives you the chance to pinpoint the areas you are most interested in.*”

*“I’ve had great connections with with staff and fellow students. I’ve always been able to get in contact with tutors and lecturers, and I’ve received a bunch of support. They’ve really helped me to achieve the best I can.*”

*“The science faculty also organises many extracurricular activities, such as hackathons, quiz nights, clubs and career events. These are all super useful for making friendly connections while exploring your interests.”*

## Taryn Smith

**Student: Bachelor of Science in Geographic Information Science and Environmental Science**



Read Taryn’s full story at:  
[auckland.ac.nz/science/taryn-smith](https://auckland.ac.nz/science/taryn-smith)





## Subject areas

### Biological, Health and Life Sciences

Biological Sciences

Biomedical Science

Exercise Sciences

Food Science and Nutrition

Marine Science

Pharmacology

Physiology

### Chemical and Physical Sciences

Chemistry

Food Science and Nutrition

Green Chemical Science

Medicinal Chemistry

Physics

### Geography, Earth and Environmental Sciences

Earth Sciences

Environmental Science

Geographic Information Science

Geography

Marine Science

### Human, Social and Behavioural Sciences

Anthropological Science

Exercise Sciences

Geography

Psychology

### Mathematical and Computational Sciences

Computer Science

Data Science

Geographic Information Science

Information and Technology Management

Logic and Computation

Mathematics

Quantitative Economics

Statistics

## Choose your career

Each subject area offers a wide range of options:

#### Biological, Health and Life Sciences:

biotechnologist, drug company representative, ecologist, fisheries analyst, geneticist, health and safety professional, healthcare professional, marine biologist, medical statistician, physiologist, virologist

**Chemical and Physical Sciences:** biochemist, clinical researcher, dietician, food safety officer, food scientist, forensic scientist, genome researcher, industrial chemist, inorganic chemist, laboratory technician, materials chemist, operations manager, organic chemist, pharmaceuticals technologist, toxicologist, wine scientist

#### Geography, Earth and Environmental Sciences:

atmospheric scientist, archaeologist, conservationist, environmental consultant, geochemist, geographer, geologist, hazards scientist, hydrologist, meteorologist, oceanographer, policy analyst, resource manager, volcanologist

#### Human, Social and Behavioural Sciences:

clinical exercise physiologist, human movement scientist, human resources professional, injury prevention consultant, mental health counsellor, policy analyst, psychologist

#### Mathematical and Computational Sciences:

business analyst, computer systems engineer, database developer, data scientist, economic analyst, financial analyst, merchant banker, programmer, risk manager, security analyst, software engineer, statistician, systems developer, telecommunications developer, traffic engineer, UX developer

*“The sporting and business worlds are now more intertwined than ever, with professionals sharing several skill sets. The programme has allowed me to identify my passions and the new possibilities that are available within the industry. I believe my studies are setting me up to thrive in a modern and progressive sector.”*

*“The conjoint programme allows me to combine my passions for sport and business. My passion in life has always been sports and physical activity. And at high school I became interested in business and economics. So, the conjoint Bachelor of Commerce/Bachelor of Sport, Health and Physical Education was a natural choice for me.*

*“Through the programme, the links between both the sporting and business worlds became clear. It’s really interesting to see how ideas and practices from both worlds are connected. And that’s where I can follow my passions.”*

## **Kennedy Limpus**

Graduate: Bachelor of Commerce/  
Bachelor of Sport, Health and Physical  
Education conjoint



# Hākinakina, Hauora, Akoranga Koiri

## Sport, Health and Physical Education

Follow your passion for sport, health and wellbeing, and develop the skills to create your dream job. This flexible programme allows you to choose courses and create a unique pathway that suits your interests and career goals.

### Quick facts – BSportHPE

**Full-time:** 3 years

(Part-time study options are also available.)

**Points per degree:** 360

**Taught at:** City Campus

**Application closing date:** 27 February 2026

(Late applications will be considered if places are available.)

**Classes start:**

Semester One: 2 March 2026

Semester Two: 20 July 2026

**Conjoint combination:**

Commerce

[auckland.ac.nz/BCom-BSportHPE](http://auckland.ac.nz/BCom-BSportHPE)

### Why study with us

- We open doorways to exciting careers. Sports coaching, physical education and health promotion are fast-growing industries – awaiting motivated and talented graduates.
- The Bachelor of Commerce conjoint allows you to combine your passions and set yourself up for a career in a thriving industry.
- Our courses draw on the best international research and practice – but are always grounded in the educational, social and cultural contexts of Aotearoa New Zealand.
- We make the most of local industry experience and research to build specialist knowledge, interest and aspiration. We focus strongly on cultural responsiveness to all community groups, including young people, Māori and Pacific communities.
- A brand-new, state-of-the-art home for Sport and Recreation! More than just a gym, more than just a sports centre, more than just a hangout space – the new Recreation Centre is all these things and more right in the heart of City Campus, providing more opportunities than ever before for students.
- Elective courses are taught by specialists from around the University. This creates a rich and enjoyable learning experience – and captures the connections between the many spheres that overlap in sport, health and education.

### Programme highlights

The programme is diverse. You can choose from courses on coaching, alternative sports, sports media, exercise science, nutrition, gender, sexuality, Māori movement, dance, youth health and others.

Prepare to meet your career aspirations by choosing one of five specialised pathways:

- Health education and promotion
- Sport coaching and leadership
- Sport science
- Health and physical education
- Dance

Or there's a sixth option. You can create a unique pathway to suit your personal goals.

In first year, you will complete practical and theoretical core courses that introduce the broad disciplines of Sport, Health and Physical Education. You could begin your chosen pathway then. Alternatively, to help decide on your focus, you could complete a range of elective courses in the array of subjects above.

All programmes include a Waipapa Taumata Rau core course that should be completed in your first year. It focuses on core knowledge relevant to our faculty, the significance of place-based knowledge, and Te Tiriti o Waitangi.

[auckland.ac.nz/wtr-course](http://auckland.ac.nz/wtr-course)

In subsequent years, you will undertake industry experience to support your learning, while continuing to build your skills and knowledge in the classroom. You could also take courses from across the University in Population Health, Exercise Sciences, Dance Studies or other specialist subjects.

### Choose your career

You will graduate with an in-depth understanding of the latest research, theories, ideas, and practices related to Sport, Health and Physical Education. You will have built the skills and understanding to lead change in communities, to improve health and wellbeing, and to help others enjoy physical activities.

You can vary jobs and career paths, depending on your area of interest. Examples include:

- Coaching, administration and management

- Corporate health and wellbeing
- Sports programme development and coordination in schools
- Community health education, health promotion and advocacy
- Community dance teaching
- Event management
- Teaching
- Health promotion

### Interested in further study?

Through a wide variety of postgraduate study options you can develop further skills and new knowledge to advance your interests and support your research. For instance, in order to pursue a career in teaching, you could add a one-year Graduate Diploma in Teaching. See pg. 54.

[auckland.ac.nz/becomeateacher](http://auckland.ac.nz/becomeateacher)

### Other pathways into the programme

If you don't have the grades to gain entry to the programme, we offer the one-year, full-time Tertiary Foundation Certificate. New Start and UniBound are also available. For more information about the University's full range of preparation programmes, see pg. 34.

[auckland.ac.nz/preparation](http://auckland.ac.nz/preparation)

*Choose your  
pathway to build  
your dream  
career*

*Find out more*  
[auckland.ac.nz/bsporthpe](http://auckland.ac.nz/bsporthpe)

# Whakamahere Tāone

## Urban Planning

Urban planners play a critical role in shaping our cities, determining how we work, live and play. They deal with the complex issues of urban growth, climate change, sustainability, infrastructure, transport, land use and social justice. Their aim is always to ensure high-quality urban design. The Bachelor of Urban Planning (Honours) is the only programme of its type in the country. It's designed to provide you with the critical knowledge and skills required for urban planning in an increasingly complex and diverse world.

### Quick facts – BUrbPlan(Hons)

**Full-time:** 4 years

**Points per degree:** 480

**Taught at:** City Campus

**Application closing date:**

8 December 2025

**Classes start:** 2 March 2026

### Why study with us

- The BUrbPlan(Hons) is a professional qualification, recognised for membership of the New Zealand Planning Institute (NZPI).
- We cultivate real-world environments and experiences in our studio-based tuition and project work.
- Our courses stimulate creativity, critical thinking, design, and analysis.
- Our approach is holistic and thorough. We prepare students for professional life by developing not only their creativity and vision, but also their leadership and project management skills.
- We offer opportunities for overseas study, internships and experiential learning.

*Shape the  
future of our  
towns, cities and  
communities*

**Find out more**

[auckland.ac.nz/burbplan-hons](http://auckland.ac.nz/burbplan-hons)

### Programme highlights

In your first year you will:

- Explore the historical development of urban planning, its theoretical foundations and ways in which this history and theory are applied to urban planning practice today
- Build an appreciation of professionalism and ethics while exploring contemporary issues facing practitioners
- Learn about the factors that influence the shape and structure of our urban spaces
- Study successful urban planning policy
- Come to understand how environmental, cultural, social and economic factors impact on urban planning practice
- Develop drawing and visual literacy skills to convey ideas in urban planning

Over the next three years your courses will cover:

- Sustainable and resilient urban development
- Housing and affordability issues
- The integration of infrastructure with land use
- Transportation planning
- Māori urban planning
- Urban design
- Visual and spatial literacy
- Urban economics
- Urban environmental issues
- Urban planning law

All programmes include a Waipapa Taumata Rau core course that should be completed in your first year. It focuses on core knowledge relevant to our faculty, the significance of place-based knowledge, and Te Tiriti o Waitangi.

[auckland.ac.nz/wtr-course](http://auckland.ac.nz/wtr-course)

### Choose your career

Worldwide, more and more people are moving from rural to urban environments. There is increased need for urban planning graduates with the strategic knowledge and skills for problem-solving in this pressured and challenging context.

Employment opportunities exist within central and local government, community groups, iwi authorities, NGOs and private practice. Our graduates are currently working throughout New Zealand, Asia, the Pacific, the UK, Australia and North America.

### Interested in further study?

After completing the Bachelor of Urban Planning (Honours) (BUrbPlan(Hons)), there are postgraduate study options, including the Master of Urban Planning (MUrbPlan), Master of Urban Design (MUrbDes) and the PhD.

### How do I apply?

Scan the QR code or follow the link below to find out how to apply.

[auckland.ac.nz/burbplan-hons](http://auckland.ac.nz/burbplan-hons)





*“I liked the idea of an interdisciplinary degree that incorporates social sciences, environmental sciences, economics and design. No day is ever boring. The courses are very relevant to current social issues, and they offer avenues for creativity and collaboration.”*

*“My lecturers were very approachable and also considerate of our workload and well-being. I got to know my classmates well, as we stayed together throughout the four years. Having familiar faces in my classes really helped.”*

*“In my final year, I took part in the NZPI Emerging Planners Mentoring Programme and was partnered with a principal planner at Auckland Council. It was great to connect with professionals in the field and apply the knowledge I’d gained to real situations.”*

*“As a resource consent planner, a large part of my role is ensuring that residential development proposals reflect the intended vision for Auckland’s urban form and adequately manage adverse effects arising from the proposed activity.”*

*“Being involved in planning is like influencing the brushstrokes in a painting. You can either make a mess or an artwork. Similarly, with the city, you can positively influence its direction and growth, creating solutions for the present and the future.”*

## **Christian Isaac**

**Graduate: Bachelor of Urban Planning (Honours)**

**Resource Consents Planner at Auckland Council**

# Double your options with a conjoint programme

There are many good reasons to choose a conjoint programme. Study in one area will often enrich your engagement in another. Employers are attracted to the maturity and versatility of graduates who have a breadth of skills and knowledge across two disciplines. It's also the opportunity to mix two different areas of interest.

A conjoint programme allows you to work towards two bachelors degrees at the same time. You can obtain a joint qualification more quickly than if you completed each degree separately. Many conjoint programmes can be finished within four to five years, depending on the combination of degrees.

A conjoint programme often requires just one extra course to be taken each year (on top of a normal full-time load). The short timeframe is due to a reduced points requirement per degree as some elective courses are not required.

You can apply for a conjoint programme when you make your initial application or do so in subsequent years if you later decide you'd like to gain a second degree.

The rank score for guaranteed admission into conjoint programmes is higher than for single bachelors programmes.

[auckland.ac.nz/conjoints-by-faculty](http://auckland.ac.nz/conjoints-by-faculty)

*Develop skills  
and knowledge  
across two  
disciplines*

**Find out more**

[auckland.ac.nz/conjoints-by-faculty](http://auckland.ac.nz/conjoints-by-faculty)



***“Are you having trouble deciding what to study? If you’re seriously considering two different options, you might not have to choose. With a conjoint programme, you can earn two degrees at once in a much shorter period of time (oftentimes taking only a year longer than a single degree).”***

*“One pro of a conjoint degree is the variety it provides. When engineering formulae start to blur on my page, I can flip open my commercial law textbook and have a look at the different legal predicaments people get into (some are really quite strange...).*

*“Perhaps the biggest benefit of a conjoint degree is that you will be equipped with the skills and knowledge of both fields of study. This not only allows you variety in what you learn but also opens up different career pathways. If you start working in a particular industry but find you don’t like it, you can move in a new direction based on the other side of your conjoint degree. This saves you having to come back to university to study for another degree.*

*“I often get asked, ‘Can I drop my conjoint if I don’t like it?’ or ‘I’ve already started my single degree, can I still pick up a conjoint?’. The answer to both questions is yes, usually. You can drop the conjoint and switch to a single degree, or pick up a conjoint later in your studies. So long as you meet the requirements to graduate, the timeline isn’t too important.”*

## **Cecilia Wang**

**Student: Bachelor of Commerce/Bachelor of Engineering (Honours) conjoint**



*View Cecilia’s three-part series of vlogs about conjoint degrees, which she produced for the University’s Inside Word blogsite.*

# Admission

## 03

It's time to apply	99
How do you get in?	100
Other pathways to tertiary study	105
Academic English Language Requirement	107
What will it cost?	108
School-leaver/first-year scholarships and awards	109
Costs for international students	111
Dates to remember	112
Useful web addresses	113







# It's time to apply

So, you've made your decision on what you want to study, and now it's time to apply. What do you need to do? It's an easy process to apply for and then enrol in your chosen programme.

## The application and enrolment process

1

Apply (online)

2

Submit any requested information and attend interview/audition if required

3

Receive offer of place in programme

4

Accept offer of place in programme (and decline any unwanted offers)

5

Enrol in courses

6

Pay fees

# How do you get in?

To study at the University of Auckland, you must have a University Entrance qualification and be selected into a programme.

Our University is committed to being a safe, inclusive and equitable place to study and work. As part of this commitment, we aim to increase the participation and success of Māori students and students from equity groups.

[auckland.ac.nz/equity](https://auckland.ac.nz/equity) or [auckland.ac.nz/tuakana](https://auckland.ac.nz/tuakana)

The following pages briefly explain the different University Entrance qualifications and what you need for selection into the programme you wish to pursue. Please note that information on these pages applies to New Zealand citizens or holders of a New Zealand residence class visa, or Australian citizens or permanent residents living in New Zealand.

## General admission information

### Minimum age

To be eligible for admission to the University of Auckland, you normally must have reached the age of 16 years by 31 December in the year preceding that in which admission is sought.

### English language requirements

You must meet certain standards of English language proficiency. See the University Entrance requirements for New Zealand school leavers.

[auckland.ac.nz/school-leaver-entry](https://auckland.ac.nz/school-leaver-entry)

### Undergraduate Targeted Admission Schemes (UTAS)

UTAS reserves a number of places in our undergraduate programmes for applicants who have met the University Entrance standard but have not met the guaranteed entry score for the programme of their choice.

UTAS places are reserved for eligible:

- Māori applicants
- Pacific applicants
- Applicants with disabilities
- Applicants from constrained economic backgrounds
- Applicants from refugee backgrounds

[auckland.ac.nz/utas](https://auckland.ac.nz/utas)

## Admission from New Zealand secondary school qualifications in 2026

To be admitted to the University, school leavers must have a University Entrance qualification based on NCEA, Cambridge International, IB or another recognised, equivalent qualification. You must also meet the admission requirements and be selected into your programme of study. See pg. 101–103 for details of the requirements for admission and selection from your qualification pathway.

### Rank scores for all applicants

All NZ school-leaver undergraduate applicants will be given a rank score. The table on pg. 104–105 show the rank scores required for guaranteed entry in 2026, specific subject and credit requirements and any other requirements you need for admission into the University of Auckland's undergraduate programmes.

### Guaranteed admission

You will be offered a place if you meet the University Entrance standard, the rank score and any other requirements for your programme or programmes.

## Recognition of prior study

The University welcomes applications from students who wish to transfer from other tertiary institutions. At the time of applying, you may also apply for credit for courses completed elsewhere. If you are a New Zealand or Australian citizen or permanent resident and have studied at another tertiary institution in New Zealand or overseas, a fee may apply.

[auckland.ac.nz/priortertiarystudy](https://auckland.ac.nz/priortertiarystudy)

If you have studied at secondary level overseas, please see

[auckland.ac.nz/prioroverseasschoolstudy](https://auckland.ac.nz/prioroverseasschoolstudy)

### Dates to remember

Applications to the University of Auckland must be received no later than the published closing date. Applications received after the closing date will only be considered on the basis of academic merit, if there are places available. Please refer to pg. 112 for application closing dates.

# National Certificate of Educational Achievement – (NCEA) Level 3

## The University Entrance Standard

You will be qualified for entrance to New Zealand universities in 2026 if you have obtained:

- NCEA Level 3
- Approved subjects: 14 credits in each of three approved subjects at Level 3
- Literacy requirement: 10 credits at Level 2 or above, made up of 5 credits in reading and 5 credits in writing
- Numeracy Requirement: 10 credits at level 1 or above, made up of co-requisite Level 1 numeracy standard (US32406) OR te pāngarau unit standard (US32412) or Achievement standards from a limited list of numeracy rich standards. You can also meet Numeracy and Literacy as prescribed by CIE.

For more information on University Entrance, please see NZQA's website [nzqa.govt.nz/ncea](http://nzqa.govt.nz/ncea)

To be admitted to the University of Auckland you must gain the University Entrance Standard and be selected into a programme. If you have not met University Entrance, you can complete "Catch Up Credits" through your school or kura.

[auckland.ac.nz/ncea-catch-up-credits](http://auckland.ac.nz/ncea-catch-up-credits)

## Admission requirements

You must meet the admission requirements for your programme(s) of study. In addition to achieving University Entrance and a rank score, some of our undergraduate programmes require you to have taken specific subjects and gained specific credits in certain subjects. Some programmes have other requirements such as a portfolio, audition and/or interview.

The table on page 104–105 shows the Rank Score, any specific subject credits and further selection requirements that guarantee entry to the University of Auckland's undergraduate programmes.

Visit us online and read the requirements for any specific programme.

[auckland.ac.nz/find-a-study-option](http://auckland.ac.nz/find-a-study-option)

## Online Rank Score calculator

We can do the math! Just enter your grades for UE approved NCEA or Cambridge. We'll calculate your rank score for you.

[www.rankscorecalculator.auckland.ac.nz](http://www.rankscorecalculator.auckland.ac.nz)



# Cambridge Assessment International Education (Cambridge International)

If you are applying for admission to the University of Auckland in 2026 on the basis of Cambridge International, you will be required to meet the following University Entrance Standard, as established by Universities New Zealand.

## The University Entrance Standard

### Part A

Applicants must obtain

- A minimum of 120 points on the New Zealand Cambridge International score table at A or AS level from any syllabus groups from those available in New Zealand (check with a Cambridge school for details\*), which are broadly equivalent to those in the list of approved subjects for NCEA, and
- A D grade or better in syllabuses from at least three different syllabus groups (excluding Thinking Skills)

### Part B

Literacy and numeracy must be satisfied as follows:

#### Literacy

*Either* An E grade or better in any one of AS English General, English Language, Language and Literature in English, Literature in English. A D grade or better will satisfy one of the syllabus requirements of Part A.

*Or* As prescribed for University Entrance with NCEA. Additional NCEA credits can be completed as "Catch Up Credits" through your school or Kura. [auckland.ac.nz/ncea-catch-up-credits](http://auckland.ac.nz/ncea-catch-up-credits)

#### Numeracy

*Either* (i) A D grade or better in IGCSE or GCSE Mathematics, or  
(ii) Any Mathematics syllabus passed at AS level. A D grade or better will satisfy one of the syllabus requirements of Part A.

*Or* As prescribed for University Entrance with NCEA. Additional NCEA credits can be completed as "Catch Up Credits" through your school or Kura. [auckland.ac.nz/ncea-catch-up-credits](http://auckland.ac.nz/ncea-catch-up-credits)

\*Read more online. [auckland.ac.nz/cambridge-NZ-entry-requs](http://auckland.ac.nz/cambridge-NZ-entry-requs)  
Please contact your school for further details. [acsnz.org.nz/acsnszschoools.cfm](http://acsnz.org.nz/acsnszschoools.cfm)

To be admitted to the University of Auckland, you must gain the University Entrance Standard and be selected into a programme.

## Admission requirements

You must meet the admission requirements for your programme(s) of study. In addition to achieving University Entrance, some of our undergraduate programmes require you to have taken specific subjects. Some programmes have other requirements such as a portfolio, audition and/or interview.

The table on pg. 104–105 shows the rank scores required for guaranteed entry in 2026, specific subject requirements and any other requirements you need for admission and selection into the University of Auckland's undergraduate programmes.

For more information about requirements for specific programmes (eg. portfolio of creative work) refer to the faculty undergraduate prospectus or website.

## How your rank score is calculated

You will be allocated a rank score using the New Zealand Cambridge International score table for the best 6 subject units at AS or A level, provided that no more than two subject units are included from any one syllabus group in the table of available syllabus groups, which are broadly equivalent to those in the list of approved subjects for NCEA. (1 AS level = 1 subject unit; 1 A level = 2 subject units.) (Thinking Skills will be excluded.)

- The rank score will be calculated from your New Zealand Cambridge International score table points by awarding the following points for each syllabus group (to a maximum of six subject units). The maximum rank score is 420.

Level	A*	A	B	C	D	E
A	140 points	120 points	100 points	80 points	60 points	40 points
AS	–	60 points	50 points	40 points	30 points	20 points

- An A Level counts as two subject units. Where a student has studied more than six subject units, the best six scores will be used.
- A Cambridge International rank score may differ from the New Zealand Cambridge International score table used for University Entrance because only syllabuses that contribute to University Entrance are used for ranking. (Thinking Skills will be excluded.)

## Example of how a Cambridge International rank score is calculated

Syllabus	Level	Subject units	Grade	Tariff points	Rank score
Chemistry	A	2	B	100	100
Mathematics	A	2	B	100	100
Physics	AS	1	B	50	50
English	AS	1	C	40	40
Biology	AS	1	D	30	Nil*
<b>Rank score</b>					<b>290</b>
<small>*Maximum six subject units. If more are achieved, the best six scores are used.</small>					

## Online Rank Score calculator

We can do the math! Just enter your grades for NCEA or Cambridge International. We'll calculate your rank score for you.

[www.rankscorecalculator.auckland.ac.nz](http://www.rankscorecalculator.auckland.ac.nz)

# International Baccalaureate (IB)

If you are applying for admission to the University of Auckland in 2026 on the basis of International Baccalaureate, you will be required to meet the following entrance standard, as established by Universities New Zealand.

## The University Entrance Standard

You must have been awarded the full IB Diploma, for which you must have achieved a minimum of 24 points. An IB Diploma completed with English as Language A1 at either Higher or Standard Level, and including any mathematics subject, satisfies the literacy and numeracy requirements for University Entrance.

Please note that the University will also accept English Language B at Higher Level, with a minimum grade of 5, as satisfying the Literacy requirement for University Entrance.

To be admitted to the University of Auckland, you must gain the University Entrance Standard and be selected into a programme.

## Admission requirements

You must meet the admission requirements for your programme(s) of study. In addition to achieving University Entrance, some of our undergraduate programmes have other requirements such as a portfolio, audition and/or interview. Please note, some programmes will require you to have taken specific subjects.

The table on pg. 104–105 shows the rank scores required for guaranteed admission in 2026 and any other requirements you need for admission and selection into the University of Auckland’s undergraduate programmes.

For more information about requirements for specific programmes (eg, portfolio of creative work) refer to the relevant faculty undergraduate prospectus or website.

## How your rank score is calculated

You will be allocated a rank score according to your IB score. For example, if you achieve 27 points for IB, your rank score will also be 27 points. The maximum rank score is 45.



# Undergraduate programme admission requirements for NZ school leavers who have achieved University Entrance

This table indicates the rank score, subject/credit requirements and other requirements that will guarantee you admission to your programme in 2026. Please refer to pg. 101–104 for an explanation of NCEA, Cambridge International and IB, with a link to our online Rank Score calculator. If you achieve the University Entrance standard but not the rank score for guaranteed entry into your programme of choice, your application will be given individual consideration if places are available.

Programme	NCEA (Level 3)	Cambridge International	IB
Bachelor of Architectural Studies (BAS)	230	280	31
	Subject to the qualitative evaluation of a portfolio of creative work.		
Bachelor of Arts (BA)	150	150	26
Bachelor of Commerce (BCom)	165	170	26
Bachelor of Communication (BC)	165	170	27
Bachelor of Dance Studies (BDanceSt)	150	150	26
	Subject to the qualitative evaluation of an audition.		
Bachelor of Design (BDes)	180	190	27
Bachelor of Early Childhood Studies (BECSt)	150	150	26
Bachelor of Education (Teaching) (BEd(Tchg))	150	150	26
	Subject to satisfactory interview, police check, safety checks, referees' reports, literacy, numeracy, and the Teaching Council of Aotearoa New Zealand language competency requirements.		
Bachelor of Education (Teaching English to Speakers of Other Languages) (BEd(TESOL))	150	150	26
	As part of the application process you will be required to disclose any criminal convictions.		
Bachelor of Engineering (Honours) (BE(Hons))	250 with 17 external Level 3 credits in Calculus and 16 external Level 3 credits in Physics	300 with Mathematics and Physics at A Levels	32 with Mathematics and Physics at HL level
Bachelor of Fine Arts (BFA)	150	150	26
Bachelor of Global Studies (BGlobalSt)	180 with a minimum of 16 Credits in each of three subjects from the NCEA approved subject list. Study of an additional language is encouraged.	190. Study of an additional language is encouraged.	27. Study of an additional language is encouraged.
Bachelor of Health Sciences (BHSc)	250 with a minimum of 18 credits in one of Classical Studies, English, Geography, History, History of Art, Social Studies or Te Reo Māori (or Te Reo Rangatira) and a minimum of 18 credits in one of Biology, Chemistry or Physics	300 with one of Classical Studies, English, Geography, History and one of Biology, Chemistry, or Physics at full A Level	33
Bachelor of Laws (LLB (Part I))	At LLB Part I, students must apply for a concurrent degree (LLB Part I and another degree programme).		
Bachelor of Music (BMus)	150	150	26
	Entry to Creative Practice: Classical; Jazz; or Popular Music is subject to the qualitative evaluation of an audition portfolio.		
Bachelor of Nursing (BNurs)	230 with a minimum of 18 credits in one of Classical Studies, English, Geography, History, History of Art, Social Studies or Te Reo Māori (or Te Reo Rangatira) and a minimum of 18 credits in one of Biology, Chemistry or Physics	280 with one of Classical Studies, English, Geography, History and one of Biology, Chemistry, or Physics at full A Level	31
Bachelor of Property (BProp)	165	170	26
Bachelor of Science (BSc) - Biomedical Science	280	310	33
- Food Science and Nutrition	200	200	28
- all other majors/specialisations	160	165	26

Programme	NCEA (Level 3)	Cambridge International	IB
Bachelor of Social Justice Studies (BSJS)	150	150	26
Bachelor of Sport, Health and Physical Education (BSportHPE)	150	150	26
Bachelor of Urban Planning (Honours) (BUrbPlan(Hons))	180	190	27

Applicants for the Bachelor of Medicine and Bachelor of Surgery (MBChB) must first complete Year 1 of either the BHSc or the BSc in Biomedical Science, or have completed another degree approved by the Faculty of Medical and Health Sciences.

Applicants for the Bachelor of Pharmacy (BPharm) should first complete Year 1 of either the BHSc or the BSc in Biomedical Science (or an equivalent programme of study), or have completed another degree approved by the Faculty of Medical and Health Sciences.

Applicants for the Bachelor of Optometry (BOptom) and Bachelor of Medical Imaging (Honours) (BMedImag(Hons)) must first complete the set courses from the common year of the BSc in Biomedical Science (or equivalent) or have completed another degree approved by the Faculty of Medical and Health Sciences.

#### Undergraduate Targeted Admission Scheme (UTAS)

The University reserves places on our programmes for Māori students, as well as Pacific students, those from constrained economic backgrounds, refugees and other equity groups who have achieved UE but failed to meet the entry requirement for their preferred programme. Go online for more details or contact your local Student Hub

[auckland.ac.nz/utas](http://auckland.ac.nz/utas)

[auckland.ac.nz/student-hubs](http://auckland.ac.nz/student-hubs)

# What if you don't achieve the rank score for guaranteed admission?

If you achieve the University Entrance standard but do not achieve a rank score that will guarantee selection into the programme you wish to pursue, your application will be given individual consideration if places are available.

Selection may take into account the following factors according to the programme you're applying for:

- Your performance in relevant subjects
- Eligibility for a targeted admission scheme
- Results of an interview, where deemed appropriate, to determine your potential for success in the programme

If you are successful in gaining a place, you may have conditions placed on your enrolment.

## If you are not offered a place

If you have not met entrance requirements there are a number of options open to you before the start of the Academic year.

If you completed NCEA, and need to meet University Entrance or improve your Rank Score, you can complete Catch Up Credits. CIE and IB students can request a remarking.

If you are still unable to meet entry requirements, the Tertiary Foundation Certificate or New Start programme are other avenues to explore.

Finally, if you have met University Entrance, but have missed the Rank Score requirements, you can transfer from another New Zealand University after one Semester of study, provided you have met the GPA/GPE requirements.

## Targeted admission schemes

We have a range of admission schemes to improve access into higher education for Māori and equity groups. If you're a Māori or Pacific student, a student with a disability, or you're from a refugee or constrained economic background, and have not met the guaranteed score, you may be eligible for inclusion in a targeted admission scheme. When submitting your application to the University of Auckland, please select the UTAS application tick-box.

[auckland.ac.nz/utas](http://auckland.ac.nz/utas)

0800 61 62 63





# Academic English Language Requirement (AELR)

An Academic English Language Requirement is a part of all bachelors degree programmes. The Requirement will not affect whether you are offered a place in a programme.

## Meeting the Requirement in your first 12 months of study

If you do not meet the Requirement through your entrance qualification, but otherwise qualify for admission, you can satisfy the AELR during your first 12 months of study by passing an approved academic English language course.

For further information, contact us or go online

[aelr@auckland.ac.nz](mailto:aelr@auckland.ac.nz)

0800 61 62 63

[auckland.ac.nz/aelr](http://auckland.ac.nz/aelr)

## English language study

If your English isn't good enough to qualify you for entrance to the University of Auckland, we can help you take the next steps forward. The University's English Language Academy (ELA) offers several English programmes and is an accredited IELTS and PTE Academic test centre.

For more information on courses, dates and fees at the English Language Academy:

**Phone:** +64 9 919 7695

**Email:** [ela@auckland.ac.nz](mailto:ela@auckland.ac.nz)

[auckland.ac.nz/ela](http://auckland.ac.nz/ela)

# What will it cost?

A qualification from the University of Auckland is a valuable asset and a lifelong investment. Give yourself some time to understand the costs involved and the financial assistance available to you.

## Tuition fees

You will be expected to contribute towards the total cost of your study. As an indication, approximate full-time annual fees paid by New Zealand and Australian citizens and permanent residents studying at the University of Auckland in 2025 are listed on this page. (Fees for international students can be found on pg. 111.)

The table below is based on the 2025 fees schedule for a domestic student enrolled in a full-time load of 120 points. It should be used as a guide only. Fees for 2026 will be set later in 2025.

For updated fees information, refer to [auckland.ac.nz/fees](https://auckland.ac.nz/fees)

Estimated annual tuition fees for domestic students	
Programme	NZ\$*
Architectural Studies	\$ 9,583.20
Arts	\$7,185.60–\$8,288.40
Commerce	\$7,742.40
Communication	\$7,742.40–\$8,288.40
Dance Studies	\$8,288.40
Design	\$9,583.20
Education (Teaching, TESOL and Early Childhood Studies)	\$7,185.60
Engineering (Honours)	\$9,583.20
Fine Arts	\$8,288.40
Global Studies	\$7,857.60
Health Sciences	\$9,326.40
Law	\$7,742.40
Medical Imaging (Honours) (Year 2 onward)**	\$10,892.40
Medicine and Surgery (Year 2 onward)**	\$18,426
Music	\$8,288.40
Nursing	\$8,288.40
Optometry (Year 2 onward)**	\$10,485.60
Pharmacy (Year 2 onward)**	\$9,326.40
Property	\$7,742.40
Science	\$7,185.60–\$9,326.40
Social Justice Studies	\$7,185.60
Sport, Health and Physical Education	\$7,185.60
Urban Planning (Honours)	\$7,857.60

\*Based on enrolment in 120 points

\*\*Note: Year 1 of the Medical Imaging, Medicine, Optometry and Pharmacy programmes is studied as a Science or Health Sciences programme.

## Fees for conjoint students

Conjoint students' fees will vary depending on the particular programmes they are enrolled in, but should be within the range listed. In all cases the fees per point will be charged at the rate set for that subject irrespective of the qualification the course is taken for.


## Other costs

In addition to tuition fees, a Student Services Fee is also charged. The fee for 2026 will be set later in 2025 and is charged per point. Students studying full-time in 2025 paid \$1,108.80.

# School-leaver/first-year scholarships and awards

Application closing dates and the range of scholarships mentioned below are indicative only, and may change. Check individual scholarship regulations for more information and updates. Unless otherwise stated, visit the scholarships website for application forms, updated closing dates, and new scholarship opportunities.

[auckland.ac.nz/scholarships](http://auckland.ac.nz/scholarships)

Scholarship name	Criteria/Target group(s)	Duration	Value per annum	Application closing date
<b>The University of Auckland general scholarships and awards</b>				
University of Auckland Top Achiever Scholarship	New Zealand citizens and permanent residents demonstrating exceptional academic performance combined with outstanding sporting, artistic, cultural and/or leadership achievements intending to enrol full-time in an undergraduate degree programme or Certificate in Health Sciences	1 year	Accommodation <sup>1</sup> plus \$5,000	21 Aug
University of Auckland Māori Academic Excellence Scholarship	New Zealand Māori students demonstrating exceptional academic performance (combined with outstanding sporting, artistic, cultural and/or leadership achievements) intending to enrol full-time in an undergraduate degree programme or Certificate in Health Sciences	3 years	Accommodation <sup>2</sup> plus \$5,000	21 Aug
University of Auckland Pacific Academic Excellence Scholarship	New Zealand citizens and permanent residents demonstrating academic achievement, taking into account a number of factors that can impact on an individual's ability to participate at university, intending to enrol full-time in an undergraduate degree programme or Certificate in Health Sciences	3 years	Accommodation <sup>2</sup> plus \$5,000	21 Aug
University of Auckland Academic Potential Scholarship	New Zealand citizens and permanent residents demonstrating academic achievement (taking into account a number of factors that can impact on an individual's ability to participate at university) intending to enrol full-time in an undergraduate degree programme or Certificate in Health Sciences	3 years	Three levels of award <sup>3</sup>	21 Aug
University of Auckland Waka Moana Scholarship	Māori taurira who have strong engagement in either Te Ao Māori, their community, the arts or have played an exceptional leadership role in sports or cultural contexts, as well as demonstrating academic ability	1 year	Accommodation plus a laptop	21 Aug
University of Auckland Vaka Moana Scholarship	Indigenous Pacific students who have strong engagement with their school and community, or the arts, or have played an exceptional leadership role in sports or cultural contexts, as well as demonstrating academic ability	1 year	Accommodation plus a laptop	21 Aug
Ralph and Eve Seelye Undergraduate Scholarship	Current Year 12 or 13 students at a high Equity Index number school with demonstrated academic ability and financial need who intend to enrol full-time in an undergraduate degree or Certificate in Health Sciences	Duration of programme	Up to \$6,000 pa	10 Oct
Pong, Tams and Ko Scholarship	Domestic and international students with any physical, psychological, cognitive or sensory impairment which restricts their full and effective participation in university life on an equal basis with others; may be enrolling either full-time or part-time in an undergraduate degree programme	1 year	Up to \$8,000	22 Feb
Presbyterian Methodist Congregational Grafton Scholarship	Current Year 12 or 13 students with demonstrated academic ability and financial hardship who intend to enrol full-time in an undergraduate degree programme or Certificate in Health Sciences	Up to 3 years	Accommodation in Grafton Hall	10 Oct
University of Auckland Scholarship for Students from Refugee Backgrounds	New Zealand citizens and permanent residents who have themselves or whose parents/primary guardian(s) have been granted refuge in New Zealand, who are enrolling full-time or part-time in any year of an undergraduate degree	1 year	\$7,000	Feb tbc
University of Auckland International Student Excellence Scholarship	New full-fee paying international students from New Zealand secondary schools who are enrolling full-time in an undergraduate degree	1 Year	\$10,000 fees credit	23 Oct (Sem One intake) 10 April (Sem Two intake)
University of Auckland International School Leaver Scholarship	New full-fee paying international students from New Zealand high schools who are undertaking an undergraduate degree	1 Year	\$20,000 fees credit	23 Oct
University of Auckland ASEAN High Achievers Scholarship	New full-fee paying international students from ASEAN countries who are enrolling full time in an undergraduate degree with overseas secondary or post secondary qualifications	1 year	\$10,000 fees credit	23 Oct (Sem One intake) 10 Apr (Sem Two intake)
University of Auckland India High Achievers Scholarship	New full-fee paying international students from India who are enrolling full time in an undergraduate degree with overseas secondary or post secondary qualifications	1 year	\$20,000 fees credit	23 Oct (Sem One intake) 10 Apr (Sem Two intake)
	<p>Go online for information about the full range of first-year scholarships sponsored by The University of Auckland.  <a href="http://auckland.ac.nz/schoolleaverscholarships">auckland.ac.nz/schoolleaverscholarships</a></p> <p><sup>1</sup> A guaranteed place at a University Hall of Residence plus \$5,000 paid in two lump sums in the first year of study</p> <p><sup>2</sup> A guaranteed place at a University Hall of Residence in the first year of study plus \$5,000 paid in five instalments over three years of study</p> <p><sup>3</sup> Tier 1 is a guaranteed place at a University Hall of Residence in the first year of study plus \$5,000 paid in five instalments over three years of study, Tier 2 is \$10,000 paid over three years, Tier 3 is \$6,000 paid over three years</p>			

Scholarship name	Criteria/Target group(s)	Duration	Value per annum	Application closing date
<b>Humanities, Social Sciences, Music, Fine Arts and Education</b>				
University of Auckland Rongo Manusina Scholarship	Māori and Pacific students enrolling in any year of a Bachelor of Communication degree	1 year	\$5,000	16 Apr 29 Oct
Beatrice Ratcliffe Entry-Level Scholarship in Music	Domestic or international student enrolling full-time in the first year of a BMus	1 year	\$5,000	14 Oct
Alison Hanham Undergraduate Scholarship in Arts	New Zealand Citizen or Permanent Resident enrolling full-time in the first year of a BA	1 year	\$5,000	14 Oct
Fred Doolin Education Scholarship	New Zealand Citizen or Permanent Resident enrolling full-time in an undergraduate degree or diploma in Education	1 year	\$10,000	20 Nov
TeachNZ Scholarships (Ministry of Education)	<b>For details about criteria and duration, please refer to <a href="http://teachnz.govt.nz">teachnz.govt.nz</a></b>			
<b>Architecture and Planning, Design and Engineering</b>				
Murray Wren Undergraduate Scholarship in Architecture	Current Year 13 students with demonstrated academic merit and financial need who intend to enrol full-time in a Bachelor of Architectural Studies	Up to 3 years	Up to \$15,000	14 Oct
Bachelor of Design Game-Changer Scholarship	Domestic and international students enrolling in a Bachelor of Design or Bachelor of Design conjoint degree	1 year	\$5,000	5 Mar
Colombo Plan Scholarship in Engineering	International student who is a citizen of a Colombo Plan member country enrolling in undergraduate study in Engineering	1 year	\$3,000	8 Jul
Canterbury Architects' Award	New Zealand Citizen or Permanent Resident from Canterbury region enrolling in a BAS	1 year	\$4,000	14 Oct
<b>Business and Law</b>				
Kelly Undergraduate Scholarship	New Zealand citizens and permanent residents enrolling full time in an undergraduate degree in the Faculty of Business and Economics	Up to 3 years	Up to \$8,000	9 Jun
Keystone Pink Beluga School Leaver Property Scholarship	New Zealand Citizen or Permanent Resident enrolling in the first year of a BProp	3 years	\$5,000	12 Aug
Cheryl Macaulay Foundation Scholarship	New Zealand Citizen or Permanent Resident enrolling in the first year of a BProp	1 year	\$5,000	14 Oct
University of Auckland Faculty of Law Entry Level Scholarship	New Zealand Citizen or Permanent Resident enrolling in the first year of an LLB	Up to 2 years	\$1,000	14 Oct
<b>Medical and Health Sciences and Science</b>				
Robyn Dixon Nursing Award	New Zealand Citizen or Permanent Resident from West Auckland enrolling in any year of a BNurs	1 year	\$2,000	8 Jul
Department of Physics Scholarship	New Zealand Citizen or Permanent Resident enrolling in a BSc in Physics and/or Geophysics	1 year	Up to \$6,000	31 Oct
Chillisoft Scholarship in Cybersecurity	Domestic or international student enrolling in undergraduate study relating to cyber security	1 year	\$5,000	8 Jul
Sinclair Scholarship	New Zealand born student enrolling in the first year of a BSc in Biology, Computational Biology or Ecology	1 year	\$3,000	25 Mar



*“I was lucky to receive a Māori High Achievers Scholarship and a Start Smart Scholarship. They allowed me to move here, paying for my first year in accommodation and helping with textbooks and support”*

**Daniel Kelly, Teaching**

# International: What will it cost?

## Fees information 2026

The table opposite outlines the annual tuition fees for programmes, based on enrolment in a full-time load of 120 points.

Please note, the University charges annual fees on the basis of the courses and number of points you enrol in, rather than by programme, so your annual tuition fee may vary from year to year.

In addition to tuition fees, a Student Services Fee is also charged. The fee for 2026 will be set later in 2025 and is charged per point. Students studying full-time in 2025 paid \$1,108.80.

When you are calculating how much it will cost to study at University, remember to include insurance, textbooks, accommodation, transport and other living costs.

## Insurance

All international students are legally required to have appropriate medical and travel insurance during their enrolment and for the duration of their student visa. The University of Auckland offers a scheme that meets these requirements. You will be automatically covered by the Studentsafe-University policy when you enrol. The insurance charge will be added to your student account. You must pay this charge when you pay your tuition fees.

The 2026 fee for this scheme will be set later in 2025. The 2025 fee was \$855.

[auckland.ac.nz/is-insurance](https://auckland.ac.nz/is-insurance)

## Further information

Please view our webpages for more details, or contact us directly.

[auckland.ac.nz/international](https://auckland.ac.nz/international)

[int-questions@auckland.ac.nz](mailto:int-questions@auckland.ac.nz)

(+64) 9 373 7513

2026 Annual Tuition Fees International	
Programme	NZ\$*
Architectural Studies	\$52,148
Arts (except performance and science-based courses)	\$40,225
Arts (performance and science-based courses)	\$48,133
Commerce	\$48,133
Communication	\$47,221
Dance Studies	\$47,221
Design	\$49,226
Education (Teaching and TESOL)	\$40,496
Engineering (Honours)	\$58,009
Fine Arts	\$44,974
Global Studies	\$52,148
Health Sciences	\$42,818
Law	\$47,218
Medical Imaging (Honours)	\$55,214
Medicine and Surgery (Year 2 onward)	\$86,561
Music	\$47,221
Nursing	\$42,818
Optometry (Year 2 onward)	\$68,723
Pharmacy (Year 2 onward)	\$55,214
Property	\$48,133
Science	\$47,221– \$58,009
Social Justice Studies	\$40,496
Sport, Health and Physical Education	\$40,496
Urban Planning (Honours)	\$47,221

\*Based on enrolment in 120 points.

# Dates to remember

Applications to the University of Auckland should be received no later than the published closing date. If there are places available, applications received after the closing date will be considered on the basis of academic merit.

Closing dates for applications for admission in 2026	
Medical Imaging (Honours); Medicine; Optometry; Pharmacy	1 July 2025
Law (Part II); Special Admission; Summer School 2026	1 December 2025
Architectural Studies; Arts; Commerce; Communication; Dance Studies; Design; Engineering (Honours); Fine Arts; Global Studies; Graduate Diploma in Teaching (Primary and Secondary); Health Sciences; Law (Part I); Music; Nursing; Property; Science; Social Justice Studies; Urban Planning	8 December 2025
Early Childhood Studies; Education (Teaching and TESOL); Social Justice Studies	31 January 2026
Sport, Health and Physical Education	27 February 2026

## Mānawa Mai Info Evening and Open Day 2025

**Open Day** is all about experiencing our University. So haramai! Meet our awesome staff and students, get hands on with our interactive activities and experience lectures. Open Day is a lot like student life itself. It's also a chance to take a look at all your study options.

Join us online at **Info Evening** to learn more about the huge range of programmes we have on offer. You'll hear from our teaching staff about what you can expect in your first year and find out everything you need to know about the application process.

Visit us online for the latest information, including dates.

[auckland.ac.nz/manawa-mai](http://auckland.ac.nz/manawa-mai)

## Orientation

Orientation takes place the week before lectures start each semester. Faculty Orientation Day is designed to help you feel more connected with your faculty of study, while allowing you to meet staff and students who you will come across during your time at the University. You will be buddied up with your UniGuide who will be there to answer any questions you may have about university life.

For more information see [auckland.ac.nz/orientation](http://auckland.ac.nz/orientation)

For information on International Orientation Week visit [auckland.ac.nz/international\\_orientation](http://auckland.ac.nz/international_orientation)

Academic year 2026*	
Summer School and Summer Start – 2026	
Lectures begin	Monday 5 January
Auckland Anniversary Day	Monday 26 January
Waitangi Day holiday	Friday 6 February
Lectures end	Friday 13 February
Study break/exams	Study break: Saturday 14 February Exams: Monday 16 – Wednesday 18 February
Summer programmes end	Wednesday 18 February
Semester One – 2026	
Orientation Week	Monday 23 – Friday 27 February
Semester One begins	Monday 2 March
Mid-semester/Easter break	Friday 3 – Friday 17 April
ANZAC Day	Monday 27 April
Lectures end	Friday 5 June
King's Birthday	Monday 1 June
Study break/exams	Study break: Monday 8 – Wednesday 10 June Exams: Thursday 11 – Monday 29 June
Semester One ends	Monday 29 June
Inter-semester/Matariki break	Tuesday 30 June – Friday 18 July
Semester Two – 2026	
Orientation Week	Monday 13 – Friday 17 July
Semester Two begins	Monday 20 July
Mid-semester break	Monday 31 August – Friday 11 September
Lectures end	Friday 23 October
Labour Day	Monday 26 October
Study break/exams	Study break: Tuesday 27 – Wednesday 28 October Exams: Thursday 29 October – Monday 16 November
Semester Two ends	Monday 16 November

\* Start/finish dates vary for some programmes.

### Semester One 2025 Orientation Welcome

Faculty Orientation: Week beginning 24 February 2025  
(Semester One 2025 begins Monday 3 March.)

### Semester Two 2025 Orientation Welcome

Faculty Orientation: Week beginning 14 July 2025  
(Semester Two 2025 begins Monday 21 July.)



# Useful web addresses

## **The University of Auckland homepage**

[auckland.ac.nz](http://auckland.ac.nz)

## **The University of Auckland Calendar**

[auckland.ac.nz/calendar](http://auckland.ac.nz/calendar)

## **To obtain a faculty prospectus**

[auckland.ac.nz/prospectus](http://auckland.ac.nz/prospectus)

## **AskAuckland**

[askauckland.ac.nz](http://askauckland.ac.nz)

## **Academic dates**

[auckland.ac.nz/dates](http://auckland.ac.nz/dates)

## **Information for prospective students**

[auckland.ac.nz/undergraduate](http://auckland.ac.nz/undergraduate)

[auckland.ac.nz/postgraduate](http://auckland.ac.nz/postgraduate)

## **Information for parents of students**

[auckland.ac.nz/parents](http://auckland.ac.nz/parents)

## **Information for international students**

[auckland.ac.nz/international](http://auckland.ac.nz/international)

## **Entry requirements**

[auckland.ac.nz/admission](http://auckland.ac.nz/admission)

## **Finances, scholarships and fees**

[auckland.ac.nz/fees](http://auckland.ac.nz/fees)

[auckland.ac.nz/scholarships](http://auckland.ac.nz/scholarships)

[auckland.ac.nz/student-loans-and-allowances](http://auckland.ac.nz/student-loans-and-allowances)

## **Support services**

[auckland.ac.nz/studentsupport](http://auckland.ac.nz/studentsupport)

## **Undergraduate study options**

[auckland.ac.nz/study-options](http://auckland.ac.nz/study-options)

## **Conjoint degrees**

[auckland.ac.nz/conjoints](http://auckland.ac.nz/conjoints)

## **How to apply**

[auckland.ac.nz/apply](http://auckland.ac.nz/apply)

## **Disclaimer**

Although every reasonable effort is made to ensure accuracy, the information in this document is provided only as a general guide for students and is subject to alteration. All students enrolling at the University of Auckland must consult its official document, the current Calendar of the University of Auckland, to ensure that they are aware of and comply with all regulations, requirements and policies.

Publication date: January 2025

## Connect with us now

Check out our full list of social networking sites and channels.

[auckland.ac.nz/connect](http://auckland.ac.nz/connect)

 [facebook.com/UniofAkl](https://facebook.com/UniofAkl)

 [@universityofauckland](https://tiktok.com/@universityofauckland)

 [@universityofauckland](https://instagram.com/universityofauckland)

 [youtube.com/UniofAuckland](https://youtube.com/UniofAuckland)



Sign up and be first to hear about scholarship opportunities, events, new programmes, and everything else you need to know about studying with us.

[auckland.ac.nz/registration](http://auckland.ac.nz/registration)





For personal assistance, please visit us at your local Student Hub, where students and whānau are welcome to talk with our expert advisers.

**Enquiries:** [auckland.ac.nz/askus](http://auckland.ac.nz/askus)

**Or phone:** 0800 61 62 63

**International:** +64 9 373 7513

#### **CITY CAMPUS**

General Library, Building 109  
5 Alfred Street, Auckland

#### **GRAFTON CAMPUS**

Philson Library, Building 503  
Level 1, 85 Park Rd, Grafton  
(Entry via the Atrium)

#### **SOUTH AUCKLAND CAMPUS**

Te Papa Ako o Tai Tonga  
6 Osterley Way, Manukau

#### **WHANGĀREI CAMPUS**

Te Papa Ako o Tai Tokerau: L Block  
13 Alexander Street  
Whangārei



**UNIVERSITY OF  
AUCKLAND**  
Waipapa Taumata Rau

[auckland.ac.nz](http://auckland.ac.nz)